
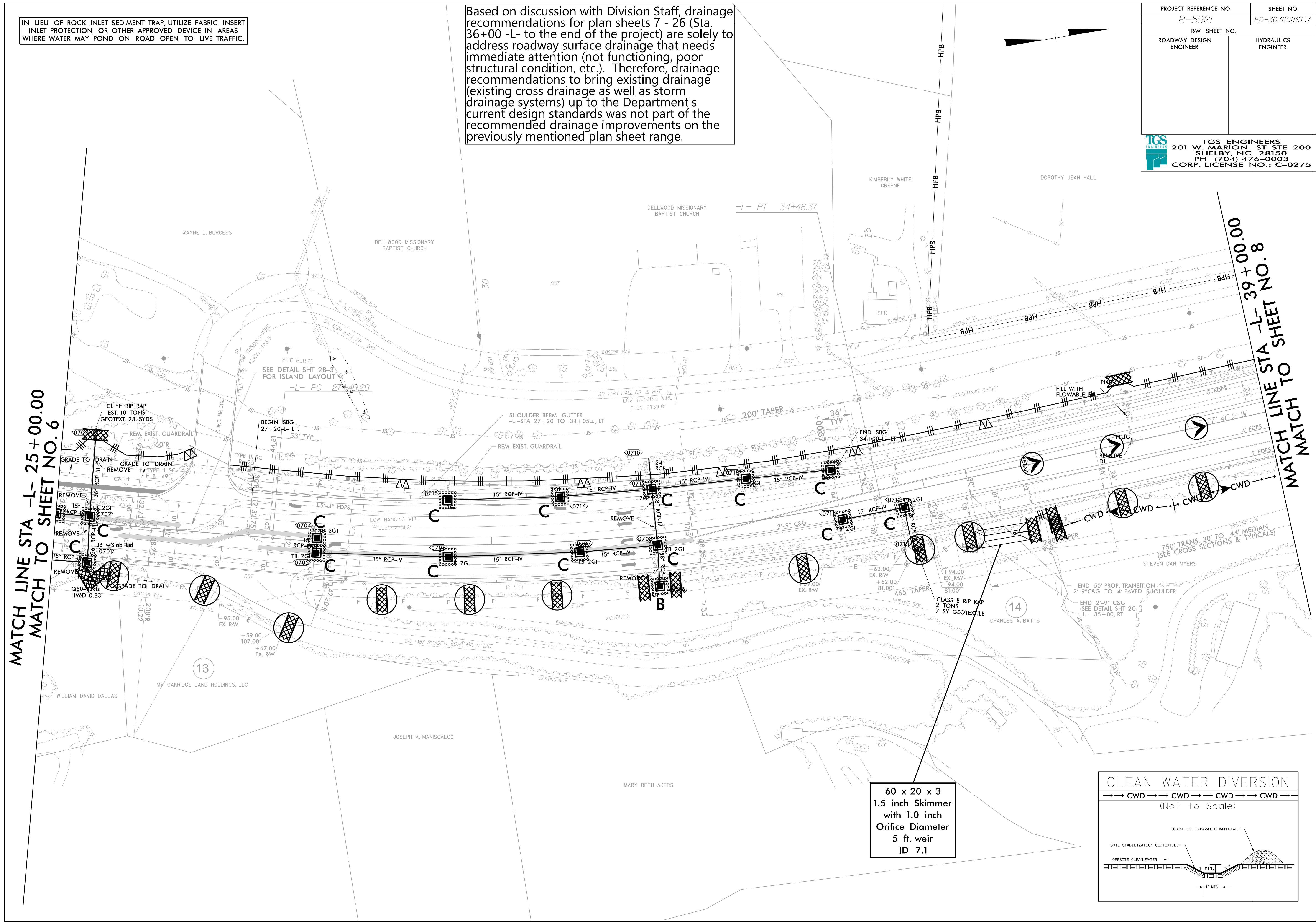


IN LIEU OF ROCK INLET SEDIMENT TRAP, UTILIZE FABRIC INSERT INLET PROTECTION OR OTHER APPROVED DEVICE IN AREAS WHERE WATER MAY POND ON ROAD OPEN TO LIVE TRAFFIC.

Based on discussion with Division Staff, drainage recommendations for plan sheets 7 - 26 (Sta. 36+00 -L- to the end of the project) are solely to address roadway surface drainage that needs immediate attention (not functioning, poor structural condition, etc.). Therefore, drainage recommendations to bring existing drainage (existing cross drainage as well as storm drainage systems) up to the Department's current design standards was not part of the recommended drainage improvements on the previously mentioned plan sheet range.

PROJECT REFERENCE NO. <i>R-5921</i>	SHEET NO. <i>EC-30/CONST.7</i>
RW SHEET NO.	
ROADWAY DESIGN ENGINEER	HYDRAULICS ENGINEER
 <b>TGS ENGINEERS</b> 201 W. MARION ST-STE 200 SHELBY, NC 28150 PH (704) 476-0003 CORP. LICENSE NO.: C-0275	



MATCH LINE STA -L- 25+00.00  
MATCH TO SHEET NO. 6

MATCH LINE STA -L- 39+00.00  
MATCH TO SHEET NO. 8

60 x 20 x 3  
1.5 inch Skimmer  
with 1.0 inch  
Orifice Diameter  
5 ft. weir  
ID 7.1

