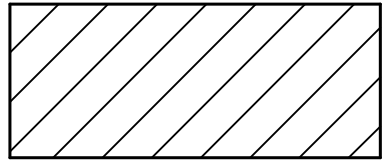


INSTALL PIPE(S) IN JURISDICTIONAL AREAS WITHOUT IMPACTING STREAM UNTIL AREA STABILIZED AND ACCORDING TO NCDOT BEST MANAGEMENT PRACTICES FOR CONSTRUCTION AND MAINTENANCE ACTIVITIES MANUAL.




ENVIRONMENTALLY SENSITIVE AREA
SEE PROJECT SPECIAL PROVISIONS

NOTE:
PLACE TEMPORARY ROCK SEDIMENT DAMS TYPE - B
AND TEMPORARY ROCK SILT CHECKS TYPE - A AT
DRAINAGE OUTLETS.

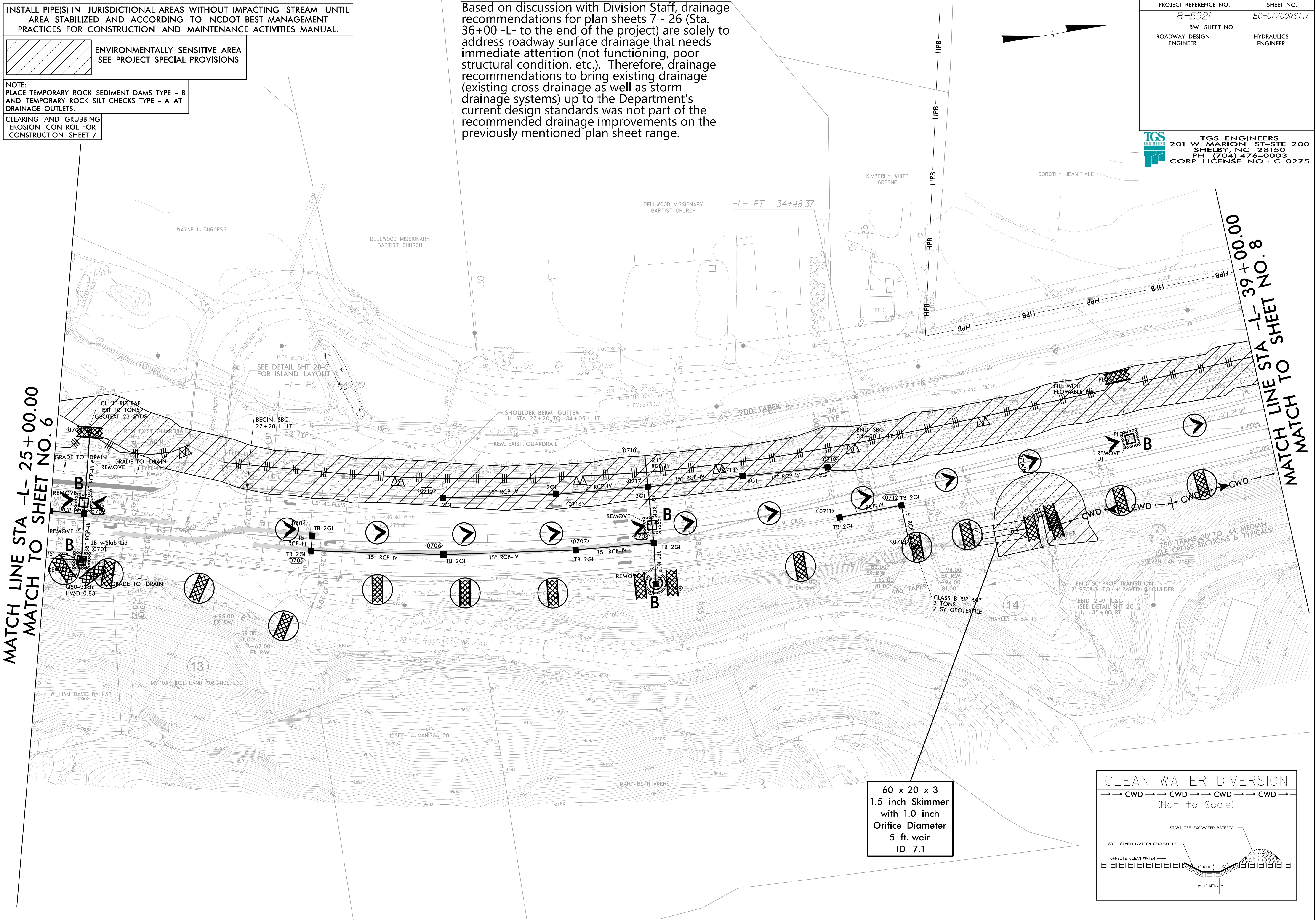
CLEARING AND GRUBBING
EROSION CONTROL FOR
CONSTRUCTION SHEET 7

Based on discussion with Division Staff, drainage recommendations for plan sheets 7 - 26 (Sta. 36+00 -L- to the end of the project) are solely to address roadway surface drainage that needs immediate attention (not functioning, poor structural condition, etc.). Therefore, drainage recommendations to bring existing drainage (existing cross drainage as well as storm drainage systems) up to the Department's current design standards was not part of the recommended drainage improvements on the previously mentioned plan sheet range.

PROJECT REFERENCE NO. <i>R-5921</i>		SHEET NO. <i>EC-07/CONST.7</i>
RW SHEET NO.		
ROADWAY DESIGN ENGINEER	HYDRAULICS ENGINEER	
 TGS ENGINEERS 201 W. MARION ST-STE 200 SHELBY, NC 28150 PH (704) 476-0003 CORP. LICENSE NO.: C-0275		

MATCH LINE STA -L- 25+00.00
MATCH TO SHEET NO. 6

MATCH LINE STA -L- 39+00.00
MATCH TO SHEET NO. 8



60 x 20 x 3
1.5 inch Skimmer
with 1.0 inch
Orifice Diameter
5 ft. weir
ID 7.1

