

INSTALL PIPE(S) IN JURISDICTIONAL AREAS WITHOUT IMPACTING STREAM UNTIL AREA STABILIZED AND ACCORDING TO NCDOT BEST MANAGEMENT PRACTICES FOR CONSTRUCTION AND MAINTENANCE ACTIVITIES MANUAL.

IN LIEU OF ROCK INLET SEDIMENT TRAP, UTILIZE FABRIC INSERT INLET PROTECTION OR OTHER APPROVED DEVICE IN AREAS WHERE WATER MAY POND ON ROAD OPEN TO LIVE TRAFFIC.

ENVIRONMENTALLY SENSITIVE AREA
SEE PROJECT SPECIAL PROVISIONS

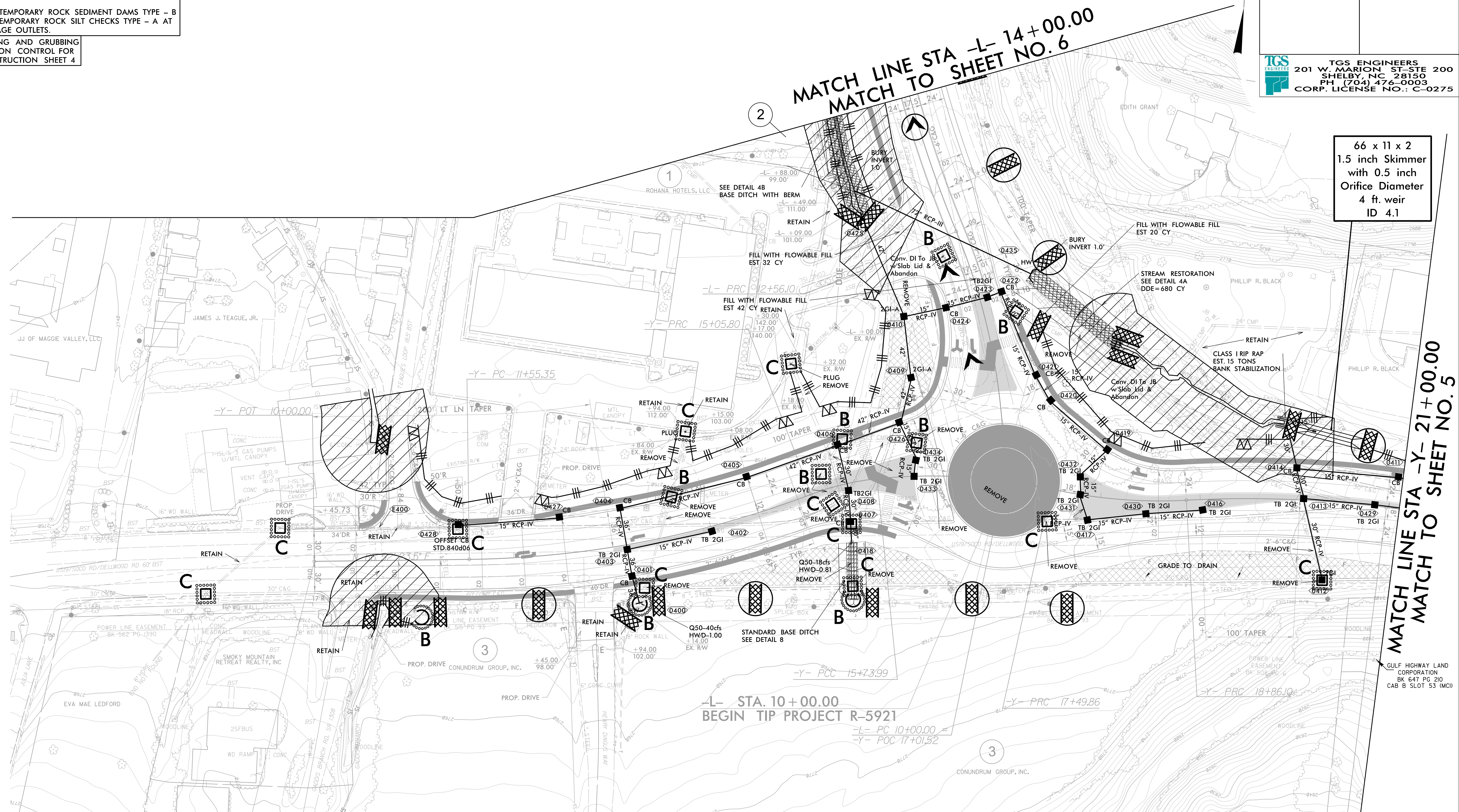
INSTALL LARGE PIPE(S) IN JURISDICTIONAL AREAS VIA PUMP AROUND AS NECESSARY. REFER TO EC-2C FOR PUMP AROUND DETAIL.

NOTE:
PLACE TEMPORARY ROCK SEDIMENT DAMS TYPE - B AND TEMPORARY ROCK SILT CHECKS TYPE - A AT DRAINAGE OUTLETS.

CLEARING AND GRUBBING
EROSION CONTROL FOR
CONSTRUCTION SHEET 4

PROJECT REFERENCE NO. <i>R-5921</i>	SHEET NO. <i>EC-04/CONST.4</i>
RW SHEET NO.	
ROADWAY DESIGN ENGINEER	HYDRAULICS ENGINEER

TGS ENGINEERS
201 W. MARION ST. STE 200
SHELBY, NC 28150
PH (704) 476-0003
CORP. LICENSE NO.: C-0275



66 x 11 x 2
1.5 inch Skimmer
with 0.5 inch
Orifice Diameter
4 ft. weir
ID 4.1

