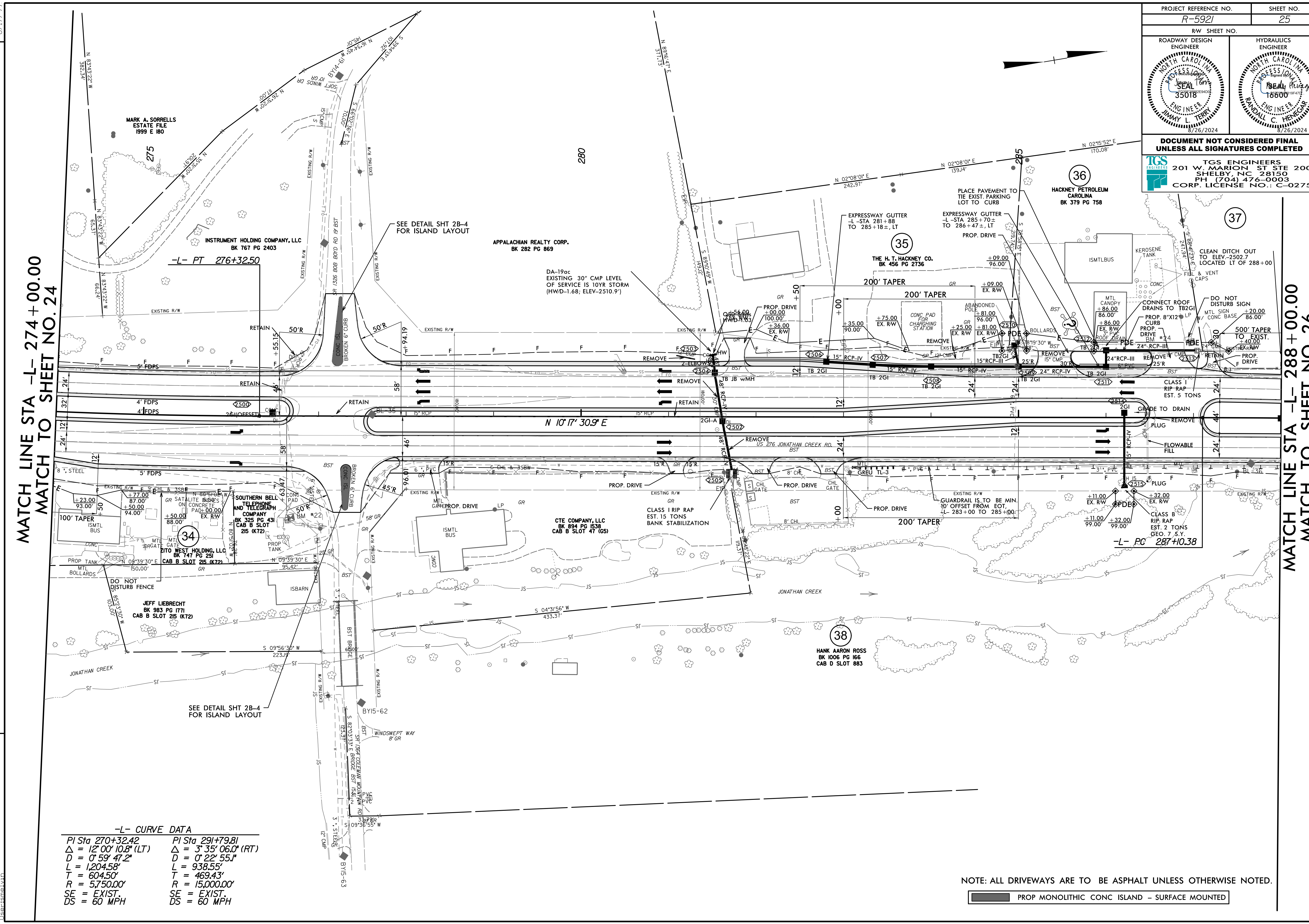


8/17/24

PROJECT REFERENCE NO. <b>R-5921</b>		SHEET NO. <b>25</b>	
ROADWAY DESIGN ENGINEER		HYDRAULICS ENGINEER	
<b>DOCUMENT NOT CONSIDERED FINAL UNLESS ALL SIGNATURES COMPLETED</b>			
 <b>TGS ENGINEERS</b> 201 W. MARION ST STE 200 SHELBY, NC 28150 PH: (704) 476-0003 CORP. LICENSE NO.: C-0275			

MATCH LINE STA -L- 274+00.00  
MATCH TO SHEET NO. 24

MATCH LINE STA -L- 288+00.00  
MATCH TO SHEET NO. 26



**-L- CURVE DATA**

PI Sta 270+32.42	PI Sta 291+79.81
$\Delta = 12^{\circ} 00' 10.8''$ (LT)	$\Delta = 3^{\circ} 35' 06.0''$ (RT)
$D = 0^{\circ} 59' 47.2''$	$D = 0^{\circ} 22' 55.1''$
$L = 1204.58'$	$L = 938.55'$
$T = 604.50'$	$T = 469.43'$
$R = 5,750.00'$	$R = 15,000.00'$
SE = EXIST.	SE = EXIST.
DS = 60 MPH	DS = 60 MPH

NOTE: ALL DRIVEWAYS ARE TO BE ASPHALT UNLESS OTHERWISE NOTED.



REVISIONS

8/28/2024 R:\Roadway\5921\Roadway\Proc\N\5921\_Rdy\_psh\_25.dgn  
User: jsmal