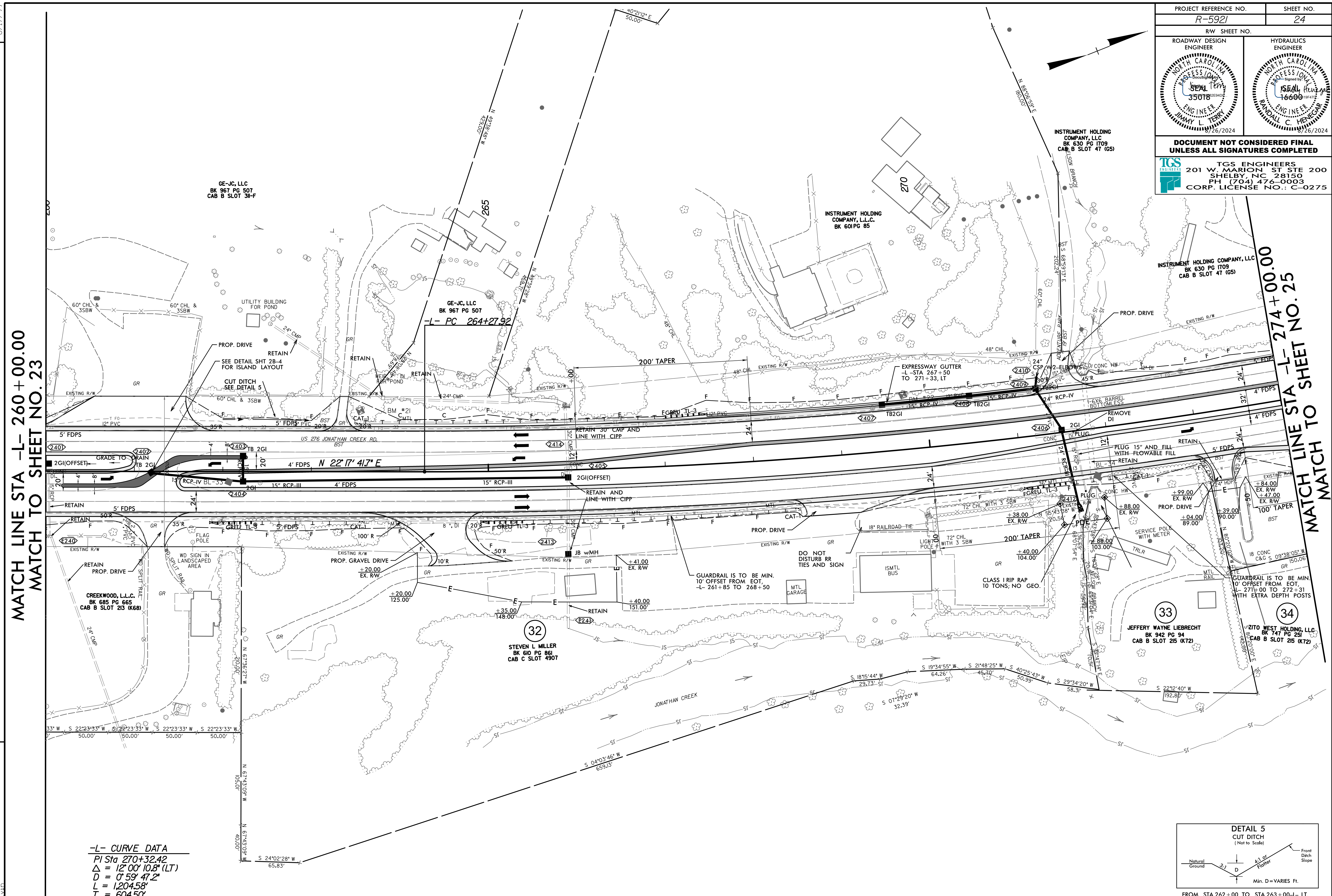


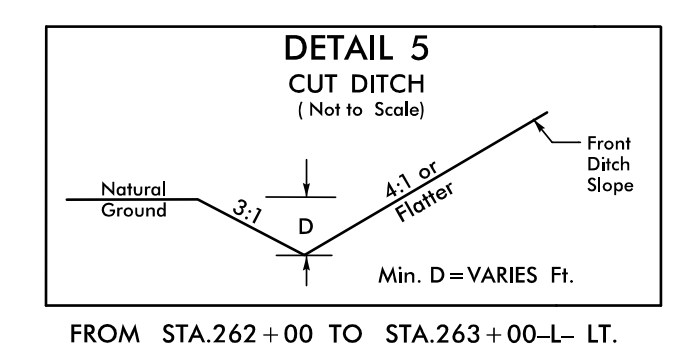
PROJECT REFERENCE NO. <b>R-5921</b>		SHEET NO. <b>24</b>	
ROADWAY DESIGN ENGINEER		HYDRAULICS ENGINEER	
<b>DOCUMENT NOT CONSIDERED FINAL UNLESS ALL SIGNATURES COMPLETED</b>			
 <b>TGS ENGINEERS</b> 201 W. MARION ST STE 200 SHELBY, NC 28150 PH: (704) 476-0003 CORP. LICENSE NO.: C-0275			



**MATCH LINE STA -L- 260+00.00**  
**MATCH TO SHEET NO. 23**

**MATCH LINE STA -L- 274+00.00**  
**MATCH TO SHEET NO. 25**

**-L- CURVE DATA**  
 PI Sta 270+32.42  
 $\Delta = 12^{\circ} 00' 10.8" (LT)$   
 $D = 0^{\circ} 59' 47.2"$   
 $L = 1204.58'$   
 $T = 604.50'$   
 $R = 5750.00'$   
 $SE = EXIST.$   
 $DS = 60 MPH$



**PROP MONOLITHIC CONC ISLAND - KEYED IN**

**NOTE: ALL DRIVEWAYS ARE TO BE ASPHALT UNLESS OTHERWISE NOTED.**

REVISIONS

8/17/24  
 R:\Projects\2024\5921\Roadway\Proc\N-R-5921\_Rdy\_psh\_24.dgn  
 8/20/2024  
 R:\Projects\2024\5921\Roadway\Proc\N-R-5921\_Rdy\_psh\_24.dgn