

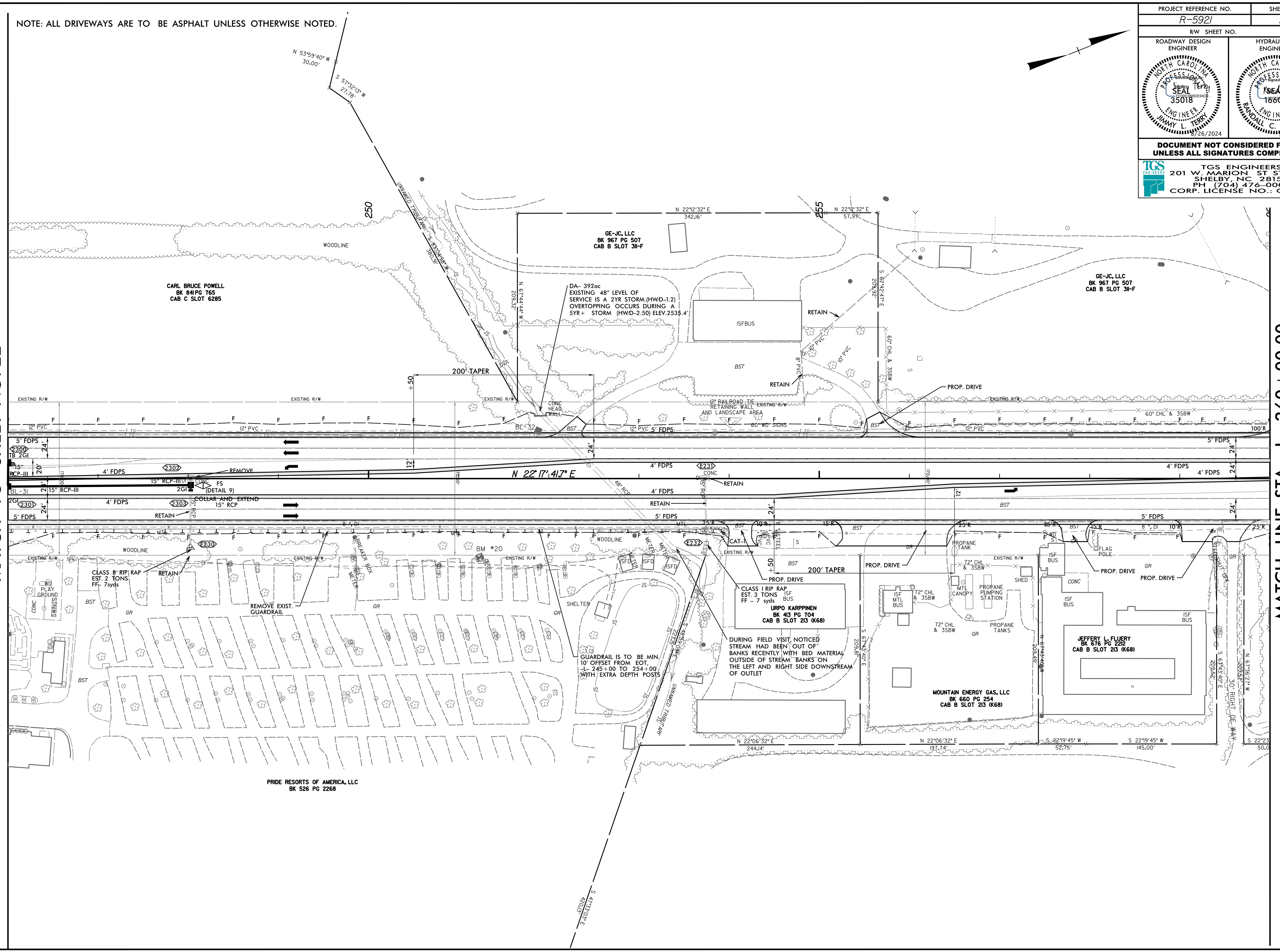
8/17/24

NOTE: ALL DRIVEWAYS ARE TO BE ASPHALT UNLESS OTHERWISE NOTED.

PROJECT REFERENCE NO. R-5921	SHEET NO. 23
ROADWAY DESIGN ENGINEER	HYDRAULICS ENGINEER
DOCUMENT NOT CONSIDERED FINAL UNLESS ALL SIGNATURES COMPLETED	
TGS ENGINEERS 201 W. MARION ST STE 200 SHELBY, NC 28150 PH: (704) 476-0003 CORP. LICENSE NO.: C-0275	

MATCH LINE STA -L- 246 + 00.00
MATCH TO SHEET NO. 22

MATCH LINE STA -L- 260 + 00.00
MATCH TO SHEET NO. 24



REVISIONS

8/20/2024
C:\Users\jerry.terry\OneDrive\Documents\Projects\5921_R-5921_Rdy_psh_23.dgn
jerry.terry