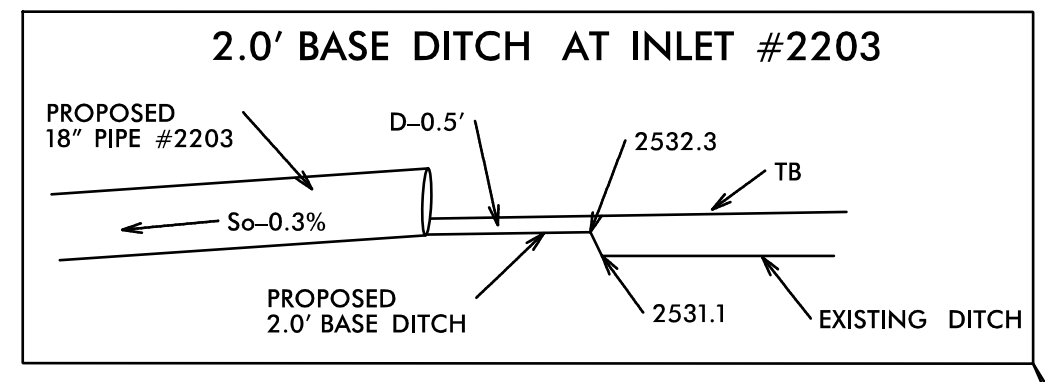
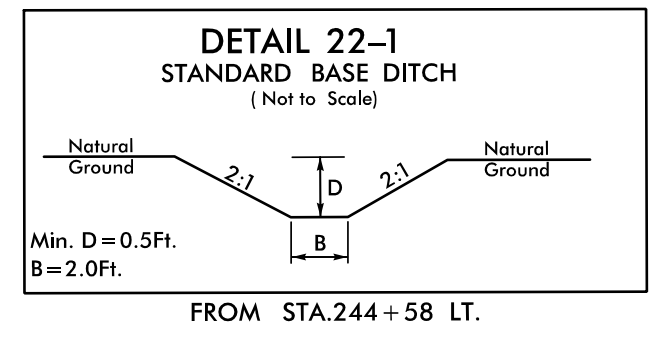


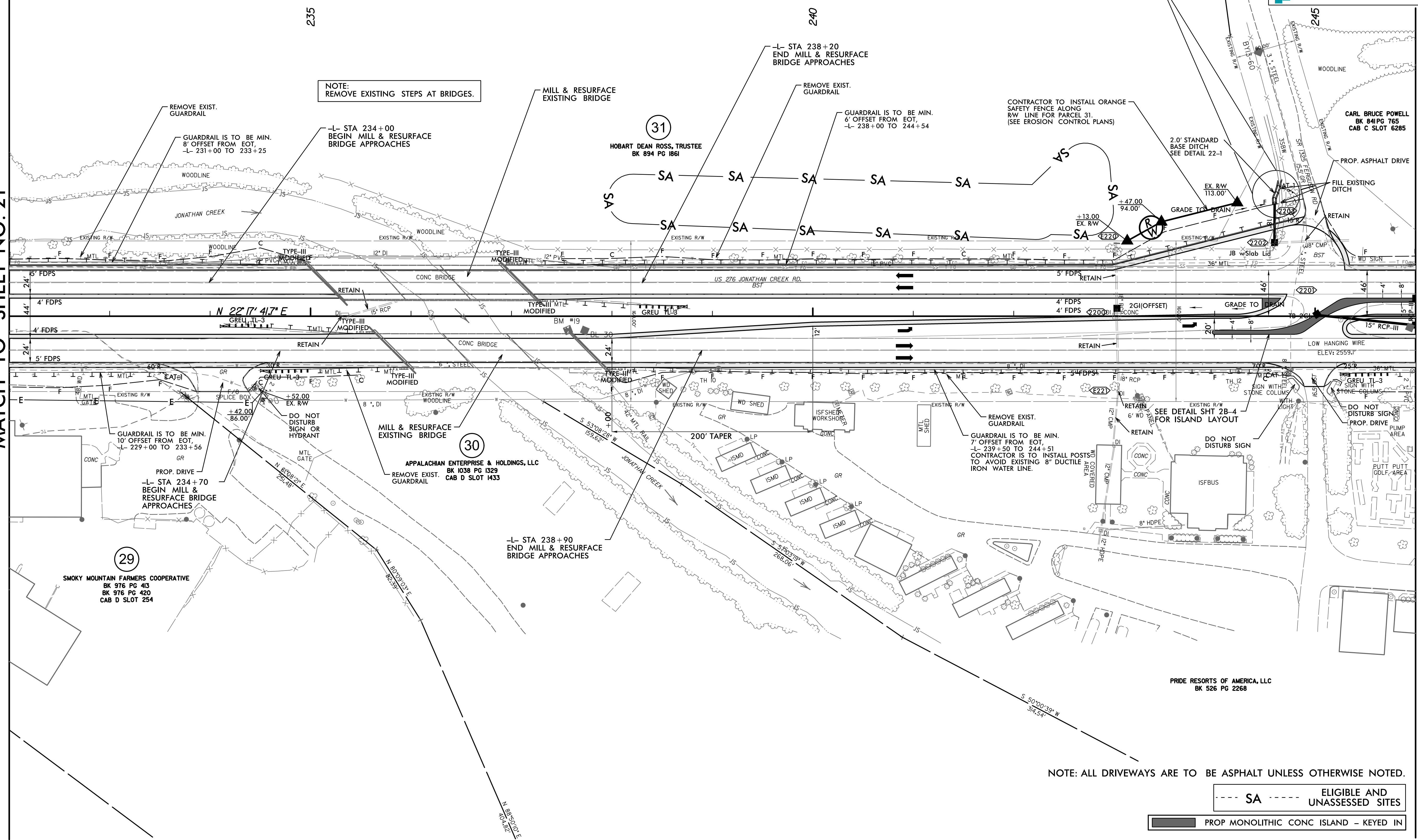
8/17/24

PROJECT REFERENCE NO. R-5921		SHEET NO. 22	
ROADWAY DESIGN ENGINEER		HYDRAULICS ENGINEER	
DOCUMENT NOT CONSIDERED FINAL UNLESS ALL SIGNATURES COMPLETED			
 TGS ENGINEERS 201 W. MARION ST STE 200 SHELBY, NC 28150 PH: (704) 476-0003 CORP. LICENSE NO.: C-0275			



MATCH LINE STA -L- 232+00.00
MATCH TO SHEET NO. 21

MATCH LINE STA -L- 246+00.00
MATCH TO SHEET NO. 23



NOTE: REMOVE EXISTING STEPS AT BRIDGES.

NOTE: ALL DRIVEWAYS ARE TO BE ASPHALT UNLESS OTHERWISE NOTED.

--- SA --- ELIGIBLE AND UNASSESSED SITES

█ PROP MONOLITHIC CONC ISLAND - KEYED IN

REVISIONS

8/28/2024 R:\Roadway\5921\Roadway\Proc\N-R-5921_Rdy_psh_22.dgn
L:\est\mal\wp