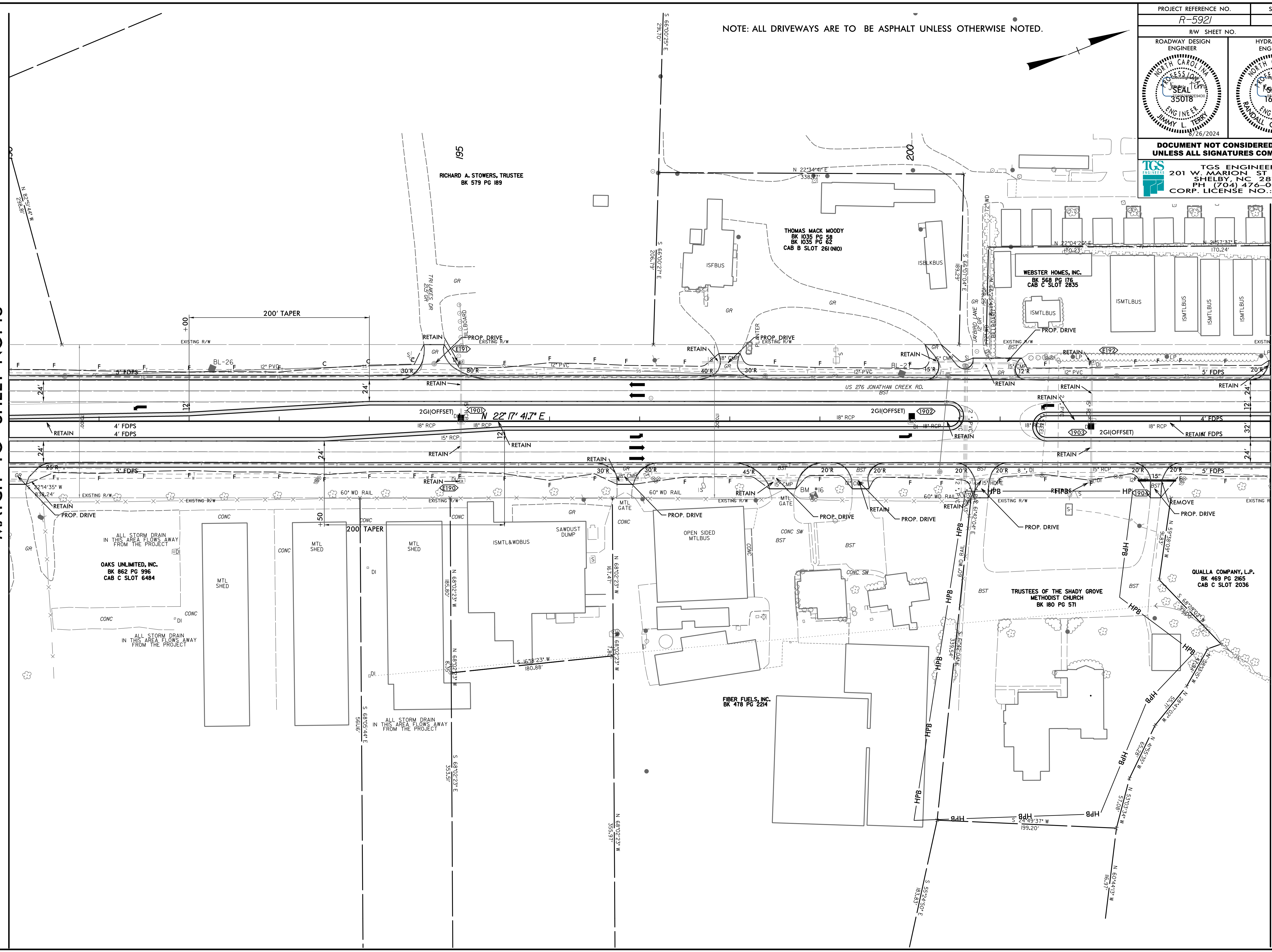


8/17/99

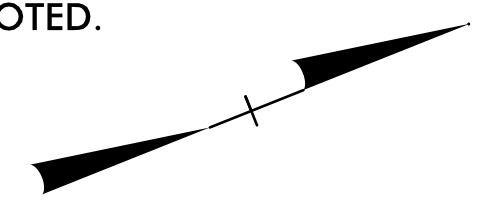
REVISIONS

X:\2024\08\17\Roadway\Proj\R-5921_Rdy_psh_9.dgn
User: tsmel

MATCH LINE STA -L- 190+00.00
MATCH TO SHEET NO. 18



NOTE: ALL DRIVEWAYS ARE TO BE ASPHALT UNLESS OTHERWISE NOTED.



PROJECT REFERENCE NO. R-5921		SHEET NO. 19	
ROADWAY DESIGN ENGINEER		HYDRAULICS ENGINEER	
DOCUMENT NOT CONSIDERED FINAL UNLESS ALL SIGNATURES COMPLETED			
TGS ENGINEERS 201 W. MARION ST STE 200 SHELBY, NC 28150 PH: (704) 476-0003 CORP. LICENSE NO.: C-0275			

MATCH LINE STA -L- 204+00.00
MATCH TO SHEET NO. 20