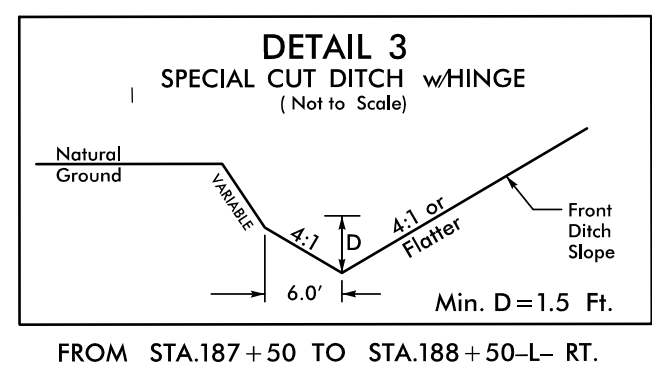


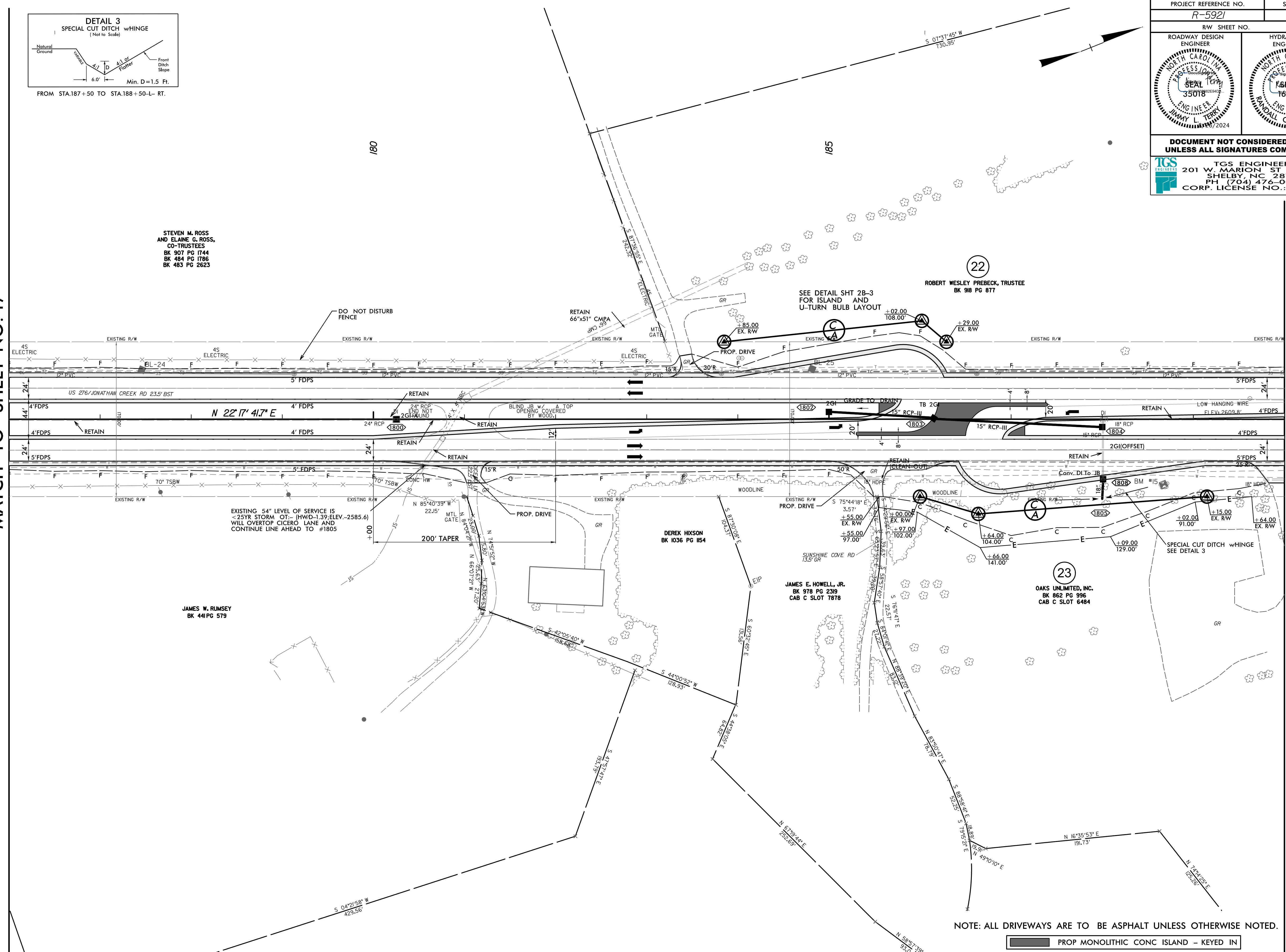
8/17/24



PROJECT REFERENCE NO. R-5921		SHEET NO. 18	
ROADWAY DESIGN ENGINEER		HYDRAULICS ENGINEER	
DOCUMENT NOT CONSIDERED FINAL UNLESS ALL SIGNATURES COMPLETED			
 TGS ENGINEERS 201 W. MARION ST STE 200 SHELBY, NC 28150 PH: (704) 476-0003 CORP. LICENSE NO.: C-0275			

MATCH LINE STA -L- 176+00.00
MATCH TO SHEET NO. 17

MATCH LINE STA -L- 190+00.00
MATCH TO SHEET NO. 19



STEVEN M. ROSS
AND ELAINE G. ROSS,
CO-TRUSTEES
BK 907 PG 1744
BK 484 PG 1786
BK 483 PG 2623

ROBERT WESLEY PREBECK, TRUSTEE
BK 918 PG 877

DEREK HIXSON
BK 1036 PG 154

JAMES E. HOWELL, JR.
BK 978 PG 2319
CAB C SLOT 7878

OAKS UNLIMITED, INC.
BK 862 PG 996
CAB C SLOT 6484

JAMES W. RUMSEY
BK 441 PG 579

NOTE: ALL DRIVEWAYS ARE TO BE ASPHALT UNLESS OTHERWISE NOTED.

PROP MONOLITHIC CONC ISLAND - KEYED IN

REVISIONS

8/20/2024
 R:\Roadway\5921\Roadway\Proj\N-5921_Rdy_psh_18.dgn
 User:smel