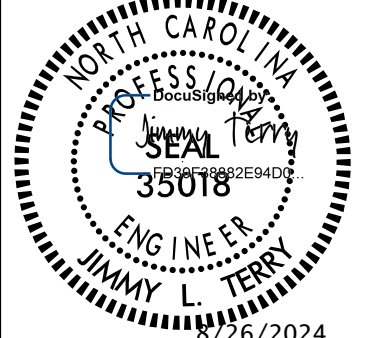
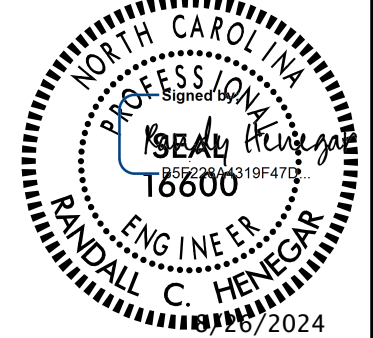

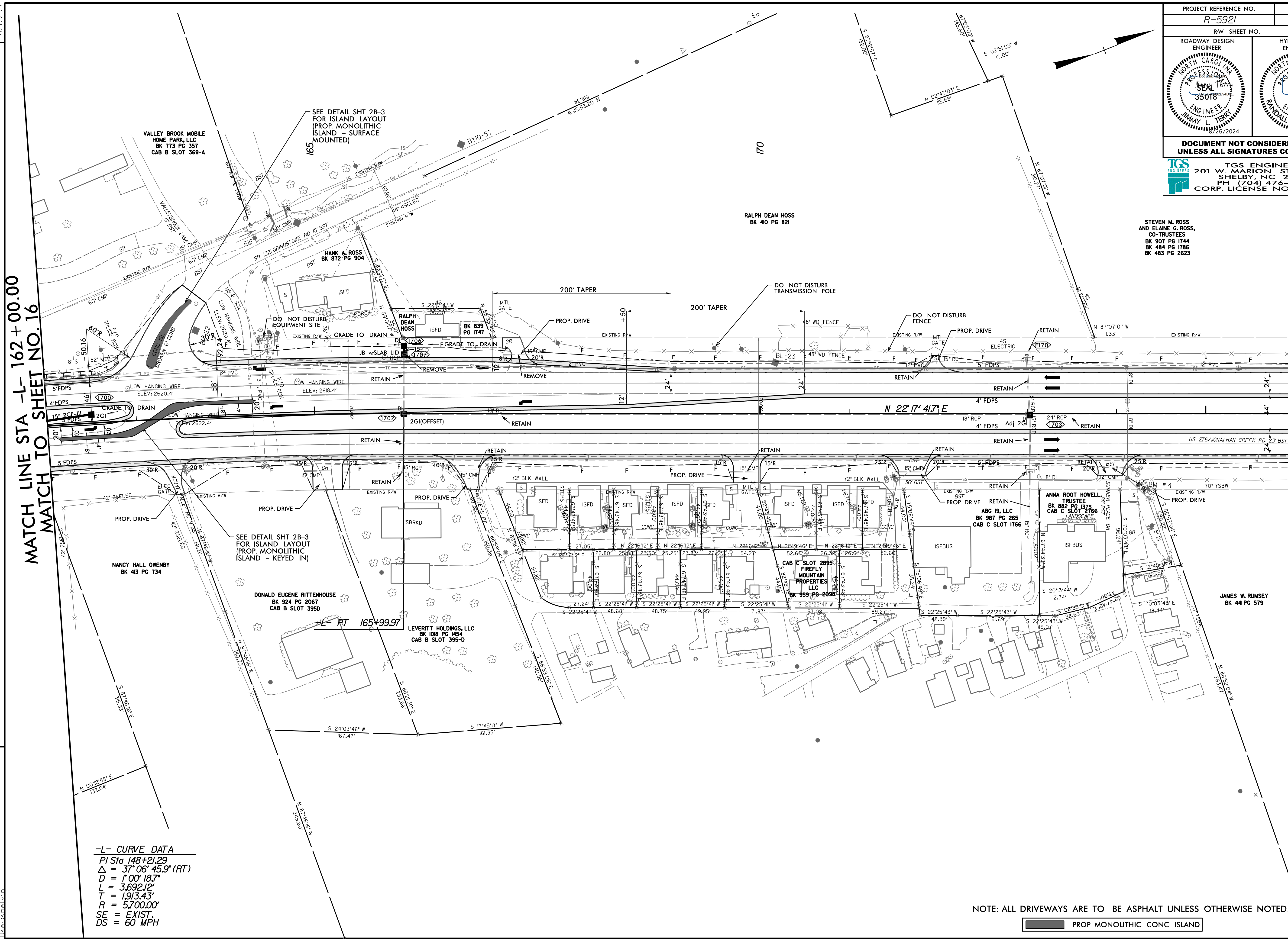


PROJECT REFERENCE NO. R-5921		SHEET NO. 17	
RW SHEET NO.		HYDRAULICS ENGINEER	
ROADWAY DESIGN ENGINEER		ENGINEER	
			
DOCUMENT NOT CONSIDERED FINAL UNLESS ALL SIGNATURES COMPLETED			
 TGS ENGINEERS 201 W. MARION ST STE 200 SHELBY, NC 28150 PH: (704) 476-0003 CORP. LICENSE NO.: C-0275			

STEVEN M. ROSS
AND ELAINE G. ROSS,
CO-TRUSTEES
BK 907 PG 1744
BK 484 PG 1786
BK 483 PG 2623



MATCH LINE STA -L- 162+00.00
MATCH TO SHEET NO. 16

MATCH LINE STA -L- 176+00.00
MATCH TO SHEET NO. 18

-L- CURVE DATA
 PI Sta 148+21.29
 $\Delta = 37^{\circ} 06' 45.9''$ (RT)
 $D = 1^{\circ} 00' 18.7''$
 $L = 3,692.12'$
 $T = 1,913.43'$
 $R = 5,700.00'$
 $SE = EXIST.$
 $DS = 60$ MPH

NOTE: ALL DRIVEWAYS ARE TO BE ASPHALT UNLESS OTHERWISE NOTED.

 PROP MONOLITHIC CONC ISLAND

REVISIONS

8/17/24

8/26/2024 R:\Roadway\Proc\N-R-5921_Rdy.psh_17.dgn