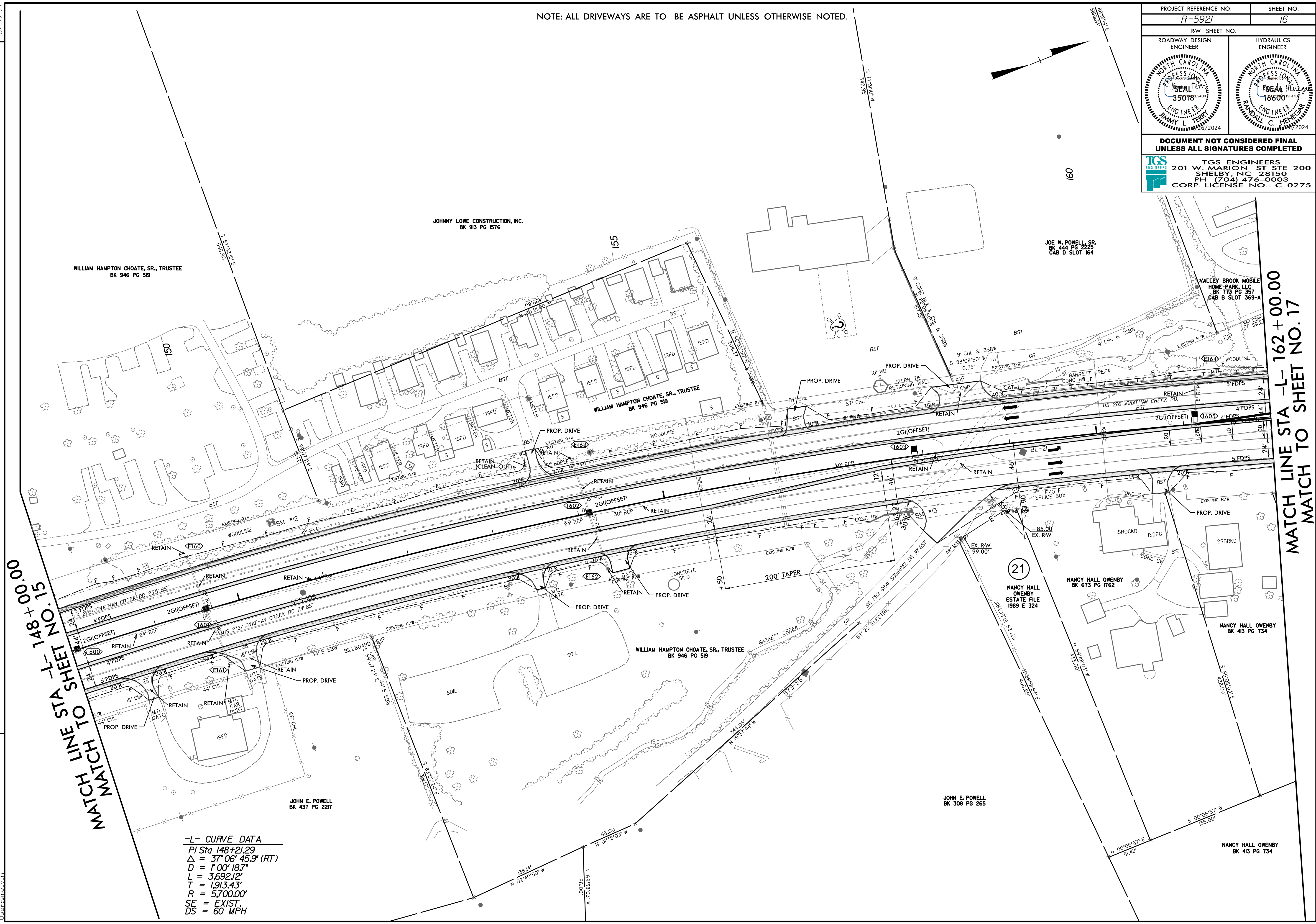


8/17/99

NOTE: ALL DRIVEWAYS ARE TO BE ASPHALT UNLESS OTHERWISE NOTED.

PROJECT REFERENCE NO. R-5921		SHEET NO. 16	
ROADWAY DESIGN ENGINEER		HYDRAULICS ENGINEER	
DOCUMENT NOT CONSIDERED FINAL UNLESS ALL SIGNATURES COMPLETED			
TGS ENGINEERS 201 W. MARION ST STE 200 SHELBY, NC 28150 PH (704) 476-0003 CORP. LICENSE NO.: C-0275			

REVISIONS



MATCH LINE STA -L- 148 + 00.00
 MATCH LINE STA -L- 162 + 00.00
 MATCH LINE STA -L- 162 + 00.00
 MATCH TO SHEET NO. 15
 MATCH TO SHEET NO. 17

-L- CURVE DATA
 PI Sta 148+21.29
 $\Delta = 37^{\circ} 06' 45.9''$ (RT)
 D = 1'00' 18.7"
 L = 3,692.12'
 T = 1,913.43'
 R = 5,700.00'
 SE = EXIST.
 DS = 60 MPH

8/28/2024
 R:\Projects\5921\Roadway\Proc\JLR-5921_Rdy.psh.dgn
 JLR