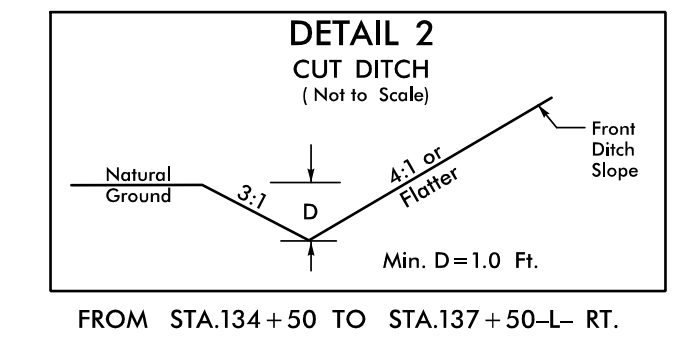
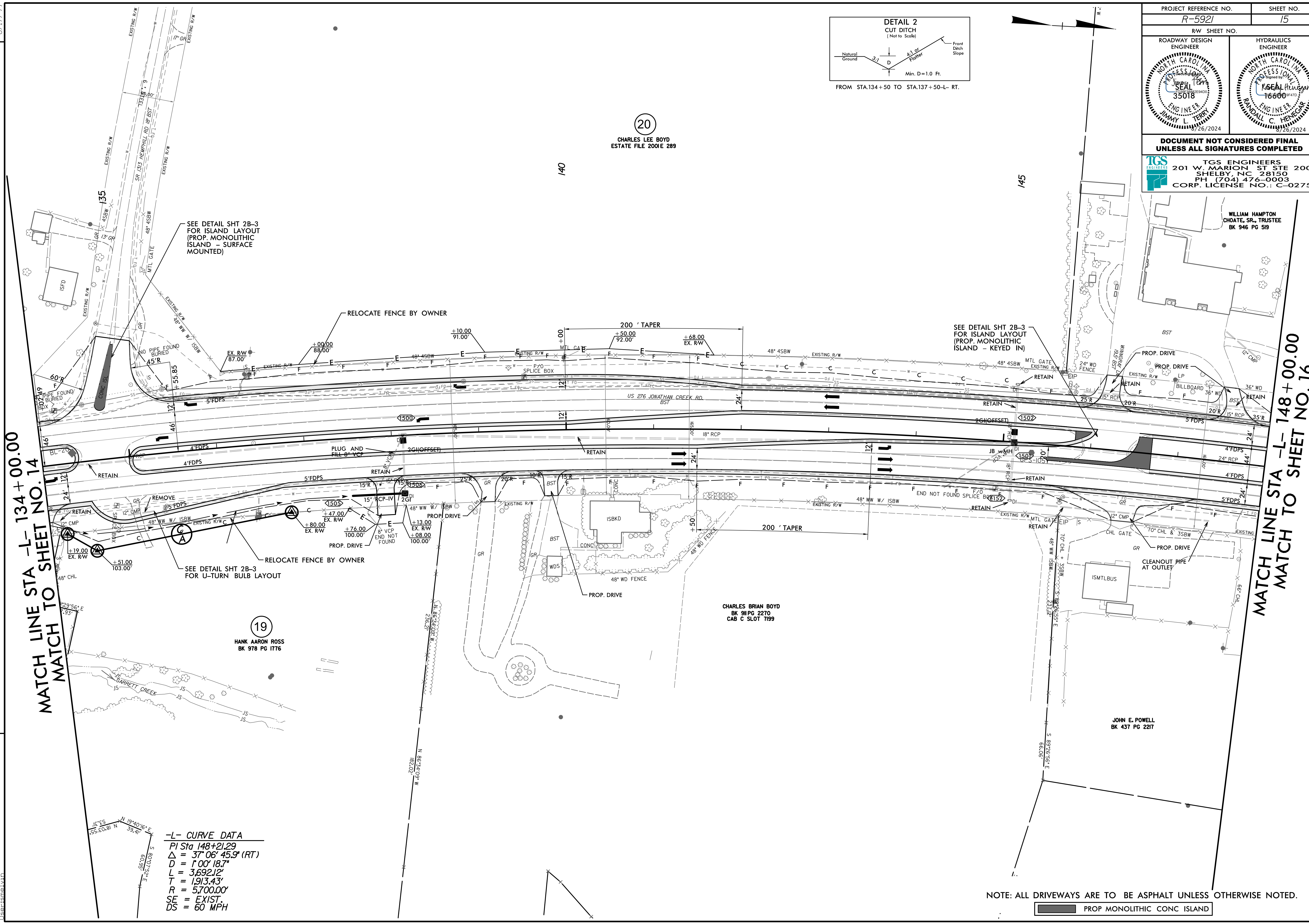


8/17/24

REVISIONS

X:\2024\Roadway\5921\Roadway\Proj\5921_Rdy_psh_15.dgn
User: jsmal



FROM STA.134+50 TO STA.137+50-L- RT.

20
CHARLES LEE BOYD
ESTATE FILE 2001E 289

140

145

MATCH LINE STA -L- 134+00.00
MATCH TO SHEET NO. 14

MATCH LINE STA -L- 148+00.00
MATCH TO SHEET NO. 16

SEE DETAIL SHT 2B-3
FOR ISLAND LAYOUT
(PROP. MONOLITHIC
ISLAND - SURFACE
MOUNTED)

SEE DETAIL SHT 2B-3
FOR ISLAND LAYOUT
(PROP. MONOLITHIC
ISLAND - KEYED IN)

SEE DETAIL SHT 2B-3
FOR U-TURN BULB LAYOUT

19
HANK AARON ROSS
BK 978 PG 1776

CHARLES BRIAN BOYD
BK 911 PG 2270
CAB C SLOT 7199

JOHN E. POWELL
BK 437 PG 2217

WILLIAM HAMPTON
CHOATE, SR., TRUSTEE
BK 946 PG 919

-L- CURVE DATA
 PI Sta 148+21.29
 $\Delta = 37^{\circ} 06' 45.9''$ (RT)
 $D = 1^{\circ} 00' 18.7''$
 $L = 3,692.12'$
 $T = 1,913.43'$
 $R = 5,700.00'$
 $SE = EXIST.$
 $DS = 60$ MPH

NOTE: ALL DRIVEWAYS ARE TO BE ASPHALT UNLESS OTHERWISE NOTED.

PROP MONOLITHIC CONC ISLAND

PROJECT REFERENCE NO. R-5921		SHEET NO. 15	
ROADWAY DESIGN ENGINEER		HYDRAULICS ENGINEER	
DOCUMENT NOT CONSIDERED FINAL UNLESS ALL SIGNATURES COMPLETED			
TGS ENGINEERS 201 W. MARION ST STE 200 SHELBY, NC 28150 PH (704) 476-0003 CORP. LICENSE NO.: C-0275			