

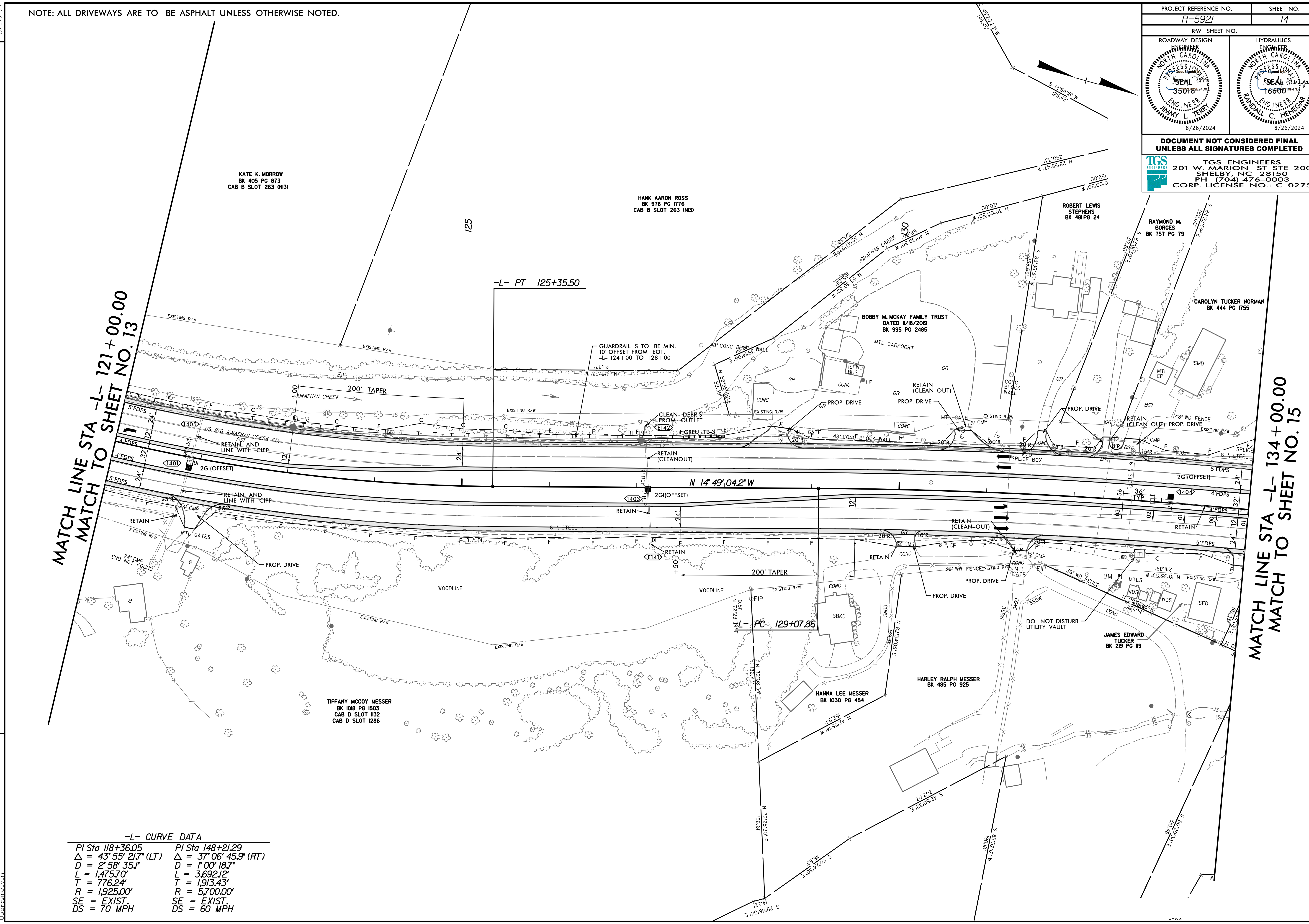
8/17/24

NOTE: ALL DRIVEWAYS ARE TO BE ASPHALT UNLESS OTHERWISE NOTED.

PROJECT REFERENCE NO. R-5921		SHEET NO. 14	
ROADWAY DESIGN ENGINEER NORTH CAROLINA PROFESSIONAL SEAL 35018 JIMMY L. TERRY 8/26/2024		HYDRAULICS ENGINEER NORTH CAROLINA PROFESSIONAL SEAL 16600 RANDALL C. HENEGAR 8/26/2024	
DOCUMENT NOT CONSIDERED FINAL UNLESS ALL SIGNATURES COMPLETED			
TGS ENGINEERS 201 W. MARION ST STE 200 SHELBY, NC 28150 PH (704) 476-0003 CORP. LICENSE NO.: C-0275			

MATCH LINE STA -L- 121+00.00
MATCH TO SHEET NO. 13

MATCH LINE STA -L- 134+00.00
MATCH TO SHEET NO. 15



-L- CURVE DATA

PI Sta 118+36.05	PI Sta 148+21.29
$\Delta = 43^{\circ} 55' 21.7''$ (LT)	$\Delta = 37^{\circ} 06' 45.9''$ (RT)
$D = 2^{\circ} 58' 35.1''$	$D = 1^{\circ} 00' 18.7''$
$L = 1475.70'$	$L = 3692.12'$
$T = 776.24'$	$T = 1913.43'$
$R = 1925.00'$	$R = 5700.00'$
SE = EXIST.	SE = EXIST.
DS = 70 MPH	DS = 60 MPH

REVISIONS

8/20/2024 R-5921\Roadway\Proj\R-5921_Rdy_psh_14.dgn
1:ceustamel