

8/17/2024

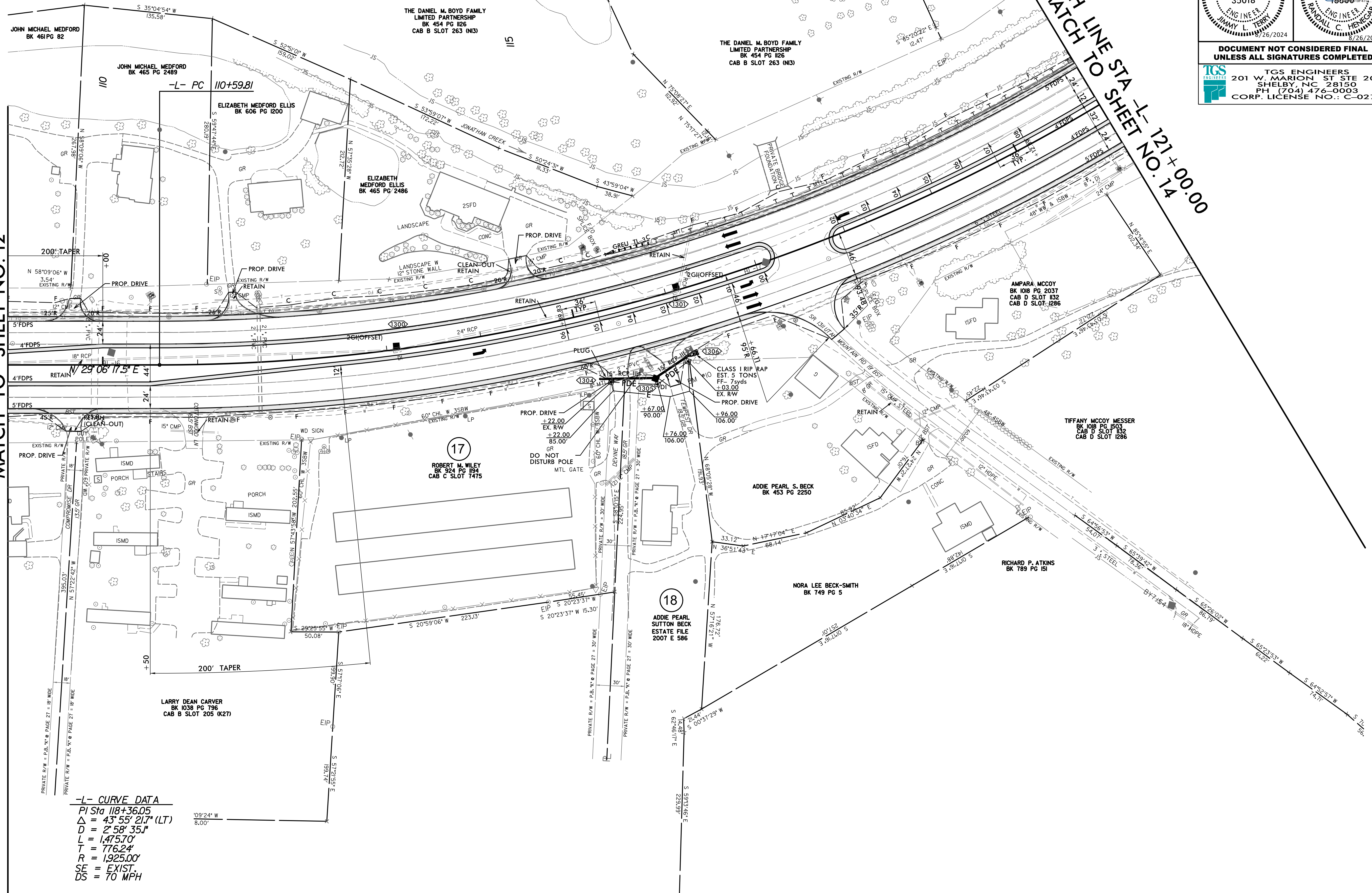
NOTE: ALL DRIVEWAYS ARE TO BE ASPHALT UNLESS OTHERWISE NOTED.

PROJECT REFERENCE NO. <i>R-5921</i>		SHEET NO. <i>13</i>	
ROADWAY DESIGN ENGINEER		HYDRAULICS ENGINEER	
DOCUMENT NOT CONSIDERED FINAL UNLESS ALL SIGNATURES COMPLETED			
TGS ENGINEERS 201 W. MARION ST STE 200 SHELBY, NC 28150 PH: (704) 476-0003 CORP. LICENSE NO.: C-0275			

MATCH LINE STA -L- 109+00.00
MATCH TO SHEET NO. 12

MATCH LINE STA -L- 121+00.00
MATCH TO SHEET NO. 14

REVISIONS



-L- CURVE DATA
 PI Sta 118+36.05
 $\Delta = 43^{\circ} 55' 21.7''$ (LT)
 $D = 2^{\circ} 58' 35.1''$
 $L = 1,475.70'$
 $T = 776.24'$
 $R = 1,925.00'$
 SE = EXIST.
 DS = 70 MPH

8/20/2024 R:\Roadway\Proj\R-5921_Rdy_psh_13.dgn
lceustmel