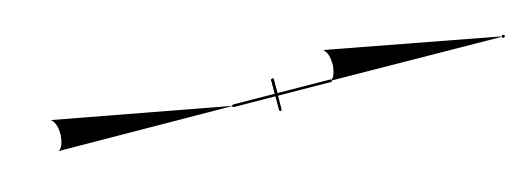
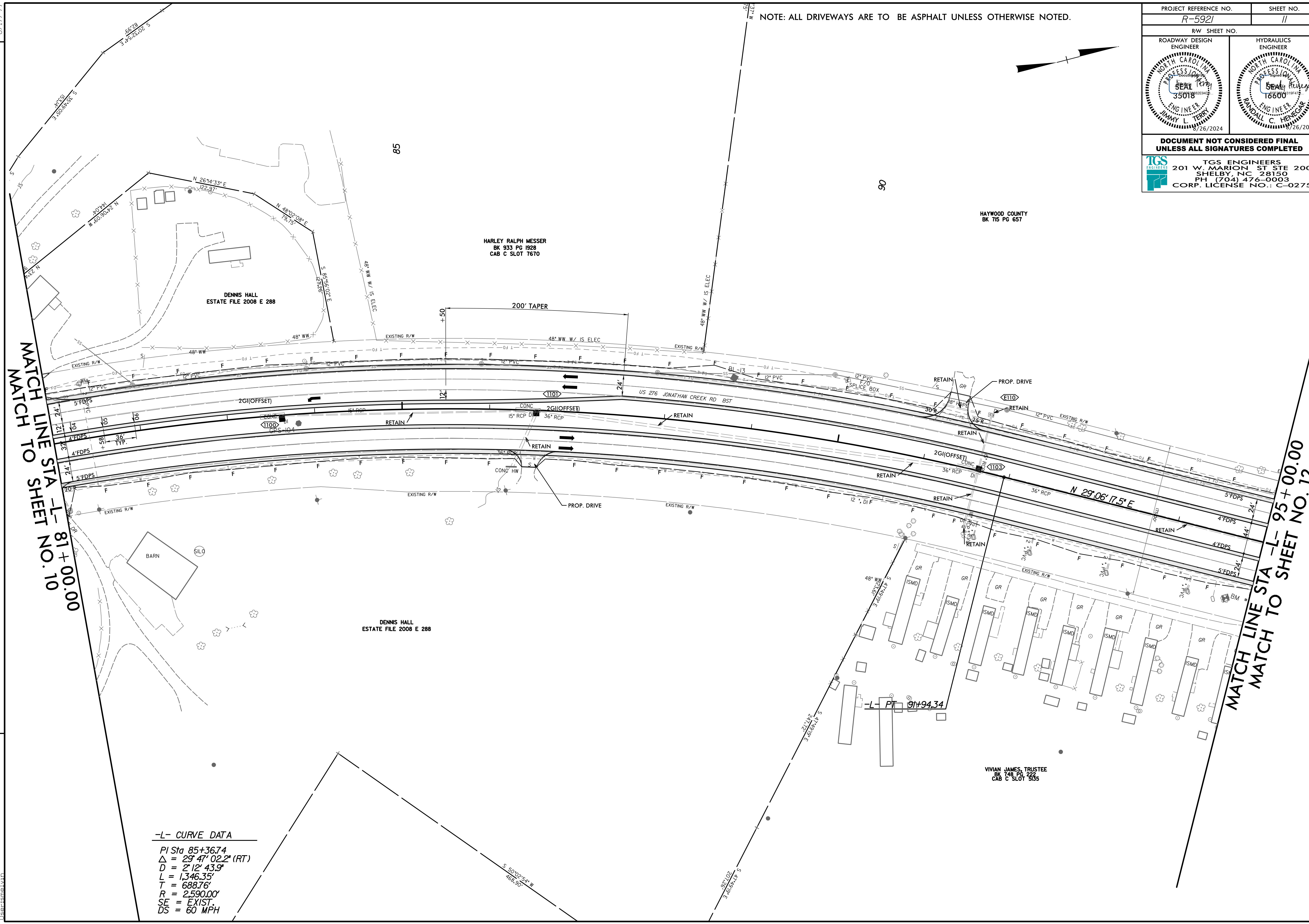


8/17/24

NOTE: ALL DRIVEWAYS ARE TO BE ASPHALT UNLESS OTHERWISE NOTED.



PROJECT REFERENCE NO. <i>R-5921</i>	SHEET NO. <i>11</i>
R/W SHEET NO.	
ROADWAY DESIGN ENGINEER <i>JIMMY L. TERRY</i> NORTH CAROLINA PROFESSIONAL ENGINEER NO. 35018 EXPIRES 8/26/2024	HYDRAULICS ENGINEER <i>RANDALL C. HENEGAR</i> NORTH CAROLINA PROFESSIONAL ENGINEER NO. 16600 EXPIRES 8/26/2024
DOCUMENT NOT CONSIDERED FINAL UNLESS ALL SIGNATURES COMPLETED	
TGS ENGINEERS 201 W. MARION ST STE 200 SHELBY, NC 28150 PH: (704) 476-0003 CORP. LICENSE NO.: C-0275	



MATCH LINE STA -L- 81+00.00
MATCH TO SHEET NO. 10

MATCH LINE STA -L- 95+00.00
MATCH TO SHEET NO. 12

HARLEY RALPH MESSER
BK 933 PG 1928
CAB C SLOT 7670

DENNIS HALL
ESTATE FILE 2008 E 288

DENNIS HALL
ESTATE FILE 2008 E 288

VIVIAN JAMES TRUSTEE
BK 748 PG 222
CAB C SLOT 5035

-L- CURVE DATA
 PI Sta 85+36.74
 $\Delta = 29^\circ 47' 02.2''$ (RT)
 $D = 2' 12' 43.9''$
 $L = 1,346.35'$
 $T = 688.76'$
 $R = 2,590.00'$
 $SE = EXIST.$
 $DS = 60$ MPH

REVISIONS

8/20/2024
C:\Users\jlt\OneDrive\Work\Projects\5921\Roadway\Proj\N-5921_Rdy_psh_11.dgn
jlt