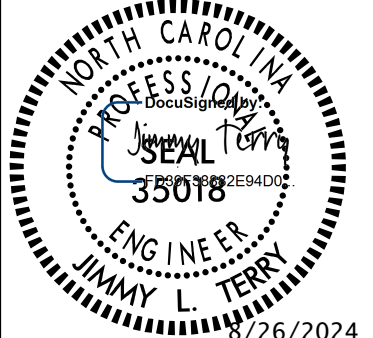
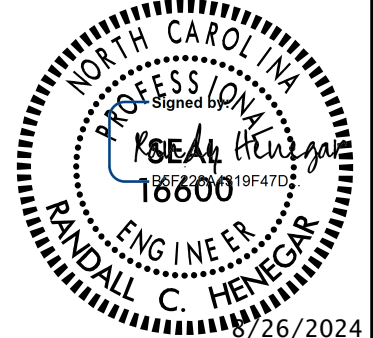

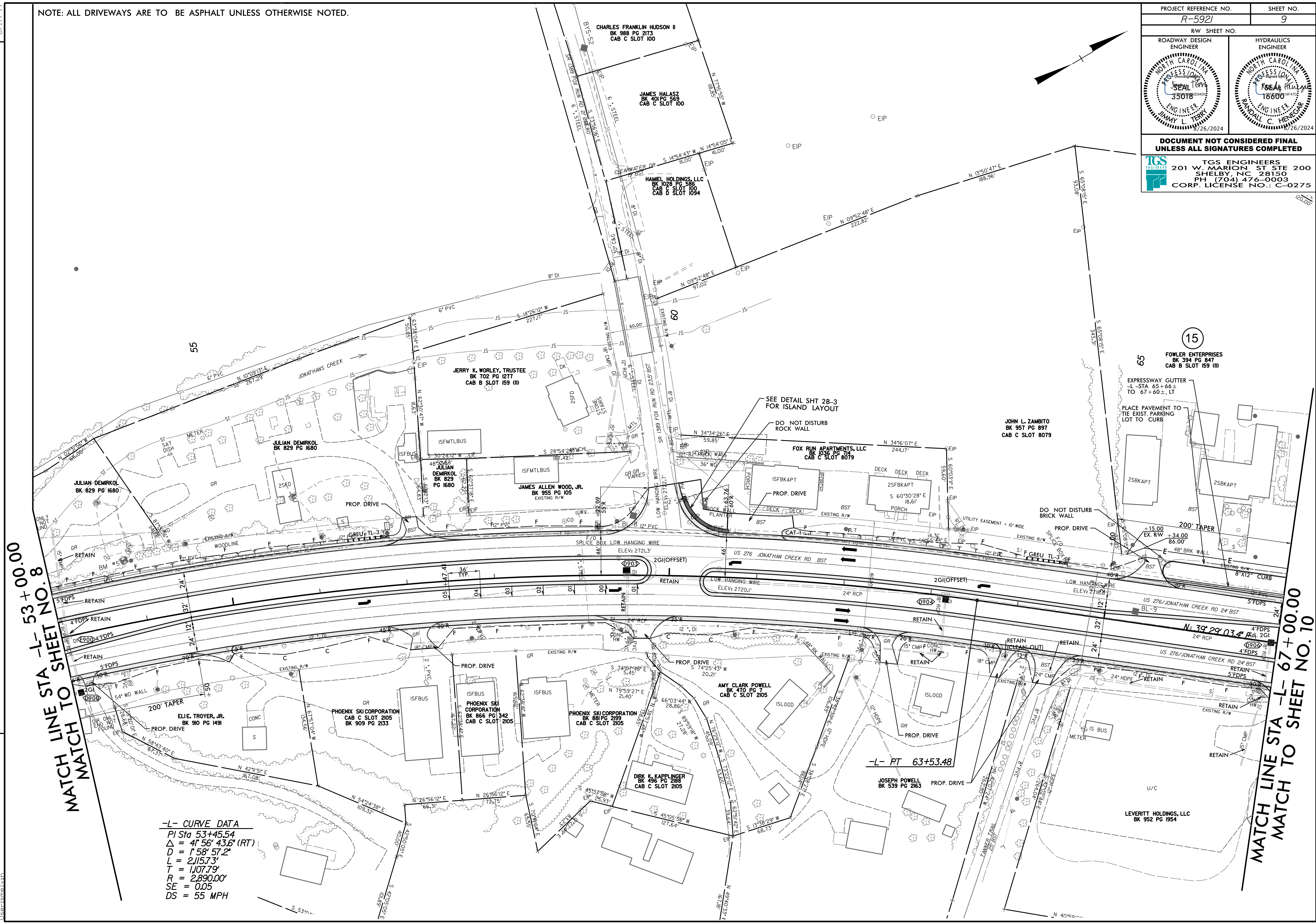


8/17/99

NOTE: ALL DRIVEWAYS ARE TO BE ASPHALT UNLESS OTHERWISE NOTED.

PROJECT REFERENCE NO. R-5921		SHEET NO. 9	
RW SHEET NO.		HYDRAULICS ENGINEER	
ROADWAY DESIGN ENGINEER		ENGINEER	
			
DOCUMENT NOT CONSIDERED FINAL UNLESS ALL SIGNATURES COMPLETED			
 TGS ENGINEERS 201 W. MARION ST STE 200 SHELBY, NC 28150 PH: (704) 476-0003 CORP. LICENSE NO.: C-0275			



MATCH LINE STA -L- 53 + 00.00
MATCH TO SHEET NO. 8

MATCH LINE STA -L- 67 + 00.00
MATCH TO SHEET NO. 10

-L- CURVE DATA
 PI Sta 53+45.54
 $\Delta = 41^{\circ} 56' 43.6''$ (RT)
 $D = 1^{\circ} 58' 57.2''$
 $L = 2,115.73'$
 $T = 1,107.79'$
 $R = 2,890.00'$
 $SE = 0.05$
 $DS = 55$ MPH

REVISIONS

8/20/2024
R:\Roadway\5921\Roadway\Proj\R-5921_Rdy_psh.dgn
L:\csmal\ltd