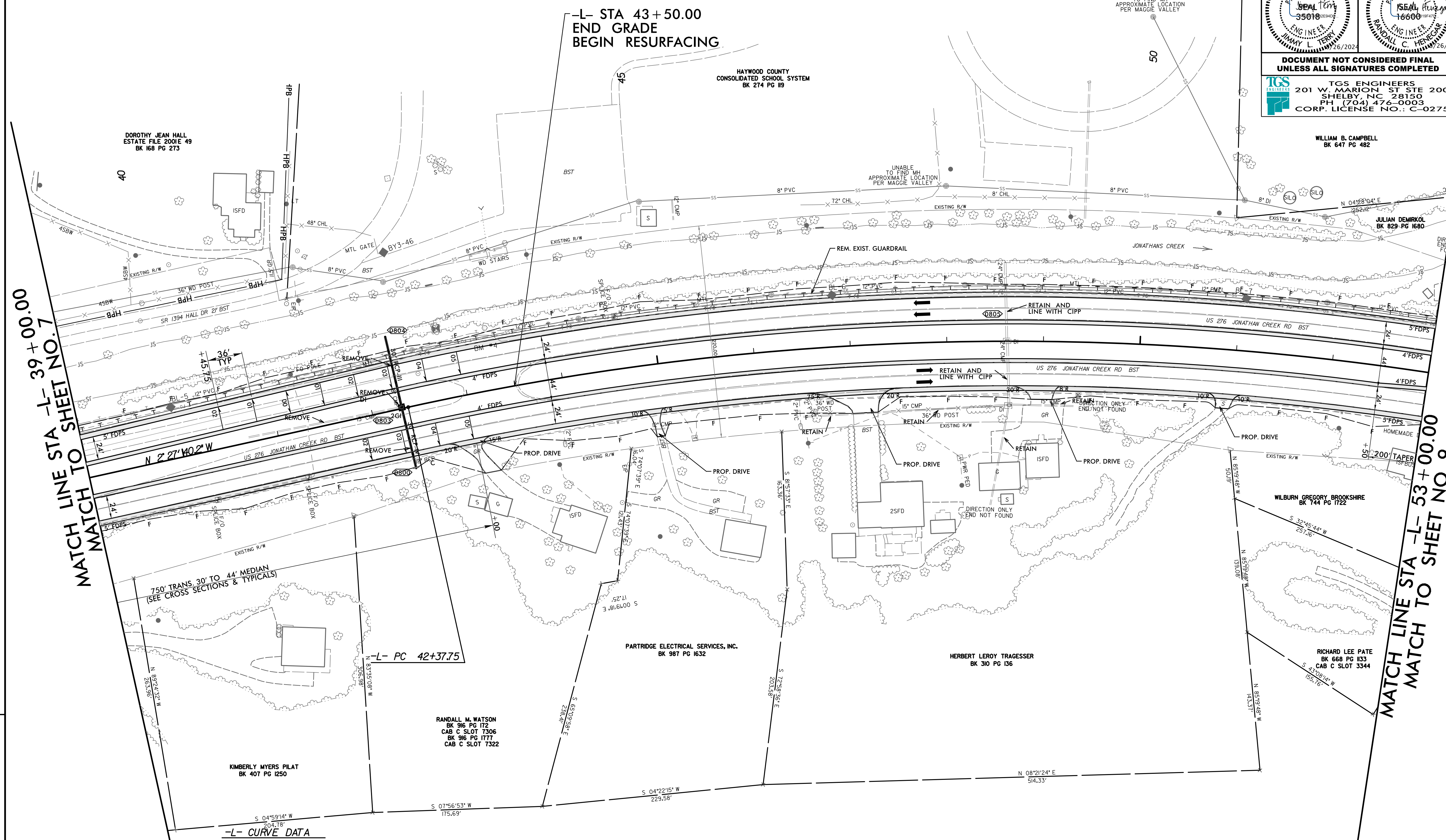


PROJECT REFERENCE NO. R-5921	SHEET NO. 8
RW SHEET NO. ROADWAY DESIGN ENGINEER	HYDRAULICS ENGINEER
DOCUMENT NOT CONSIDERED FINAL UNLESS ALL SIGNATURES COMPLETED	
 TGS ENGINEERS 201 W. MARION ST STE 200 SHELBY, NC 28150 PH (704) 476-0003 CORP. LICENSE NO.: C-0275	
WILLIAM B. CAMPBELL BK 647 PG 482	



MATCH LINE STA -L- 39+00.00
 MATCH TO SHEET NO. 7

MATCH LINE STA -L- 53+00.00
 MATCH TO SHEET NO. 9

-L- CURVE DATA
 PI Sta 53+45.54
 $\Delta = 41^{\circ}56'43.6''$ (RT)
 $D = 1^{\circ}58'57.2''$
 $L = 2,115.73'$
 $T = 1,107.79'$
 $R = 2,890.00'$
 $SE = 0.05$
 $DS = 65$ MPH

NOTE: ALL DRIVEWAYS ARE TO BE ASPHALT UNLESS OTHERWISE NOTED.

PROP MONOLITHIC CONC ISLAND - SURFACE MOUNTED

FOR -L- PROFILE, SEE SHEET NO. 28

REVISIONS

8/17/99
 8/20/2024
 C:\Users\jw\OneDrive\Documents\Roadway\Proj\R-5921_Rdy_psh.dgn
 jw