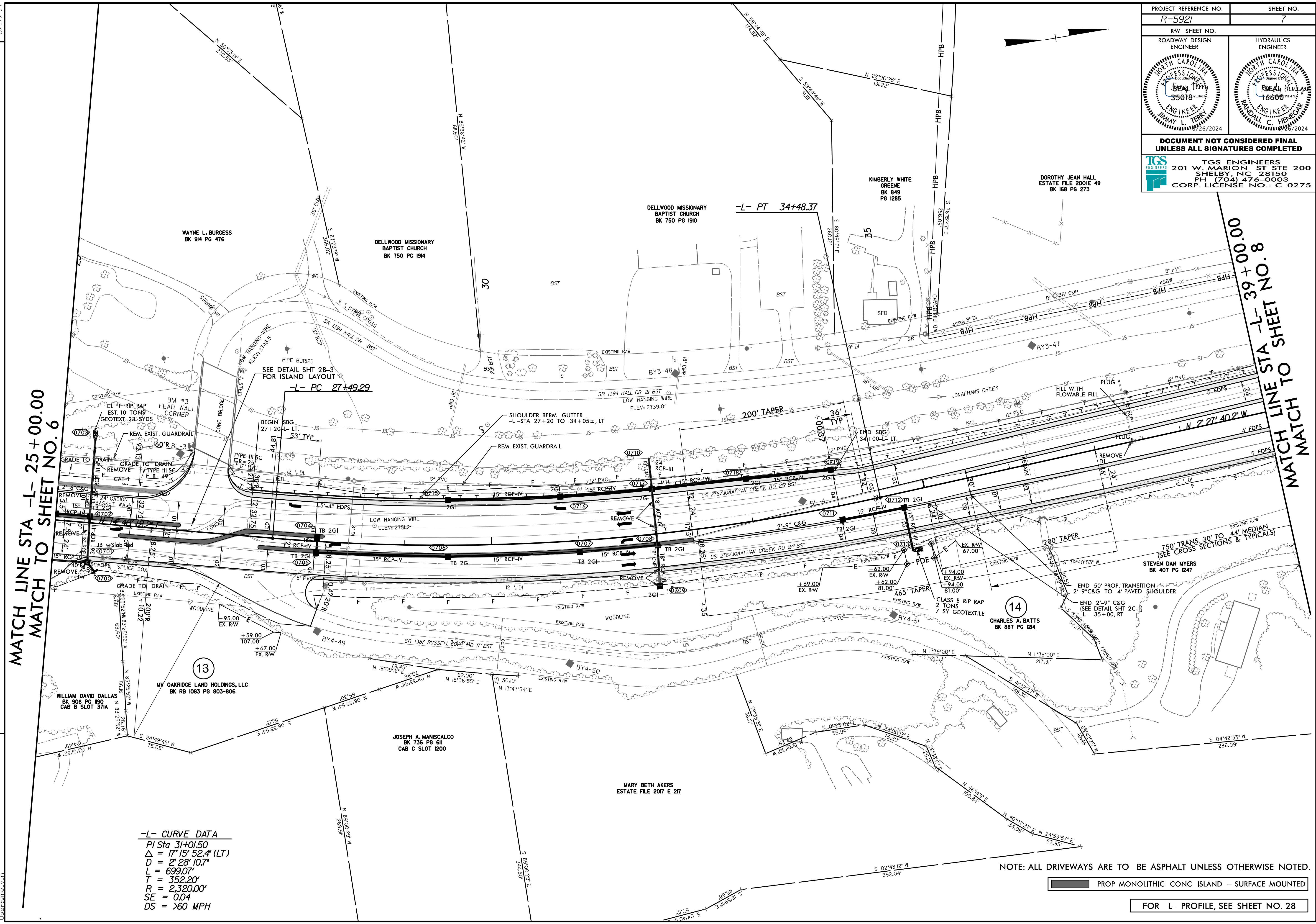


PROJECT REFERENCE NO. R-5921	SHEET NO. 7
ROADWAY DESIGN ENGINEER	HYDRAULICS ENGINEER
DOCUMENT NOT CONSIDERED FINAL UNLESS ALL SIGNATURES COMPLETED	
TGS ENGINEERS 201 W. MARION ST STE 200 SHELBY, NC 28150 PH (704) 476-0003 CORP. LICENSE NO.: C-0275	



MATCH LINE STA -L- 25+00.00
 MATCH TO SHEET NO. 6

MATCH LINE STA -L- 39+00.00
 MATCH TO SHEET NO. 8

-L- CURVE DATA
 PI Sta 31+01.50
 $\Delta = 17^\circ 15' 52.4''$ (LT)
 $D = 2^\circ 28' 10.7''$
 $L = 699.07'$
 $T = 352.20'$
 $R = 2,320.00'$
 $SE = 0.04$
 $DS = >60$ MPH

NOTE: ALL DRIVEWAYS ARE TO BE ASPHALT UNLESS OTHERWISE NOTED.

PROP MONOLITHIC CONC ISLAND - SURFACE MOUNTED

FOR -L- PROFILE, SEE SHEET NO. 28

REVISIONS

R:\2024\11\Roadway\Proj\R-5921_Rdy.psh, 07.dgn
 8/17/2024
 8/17/24