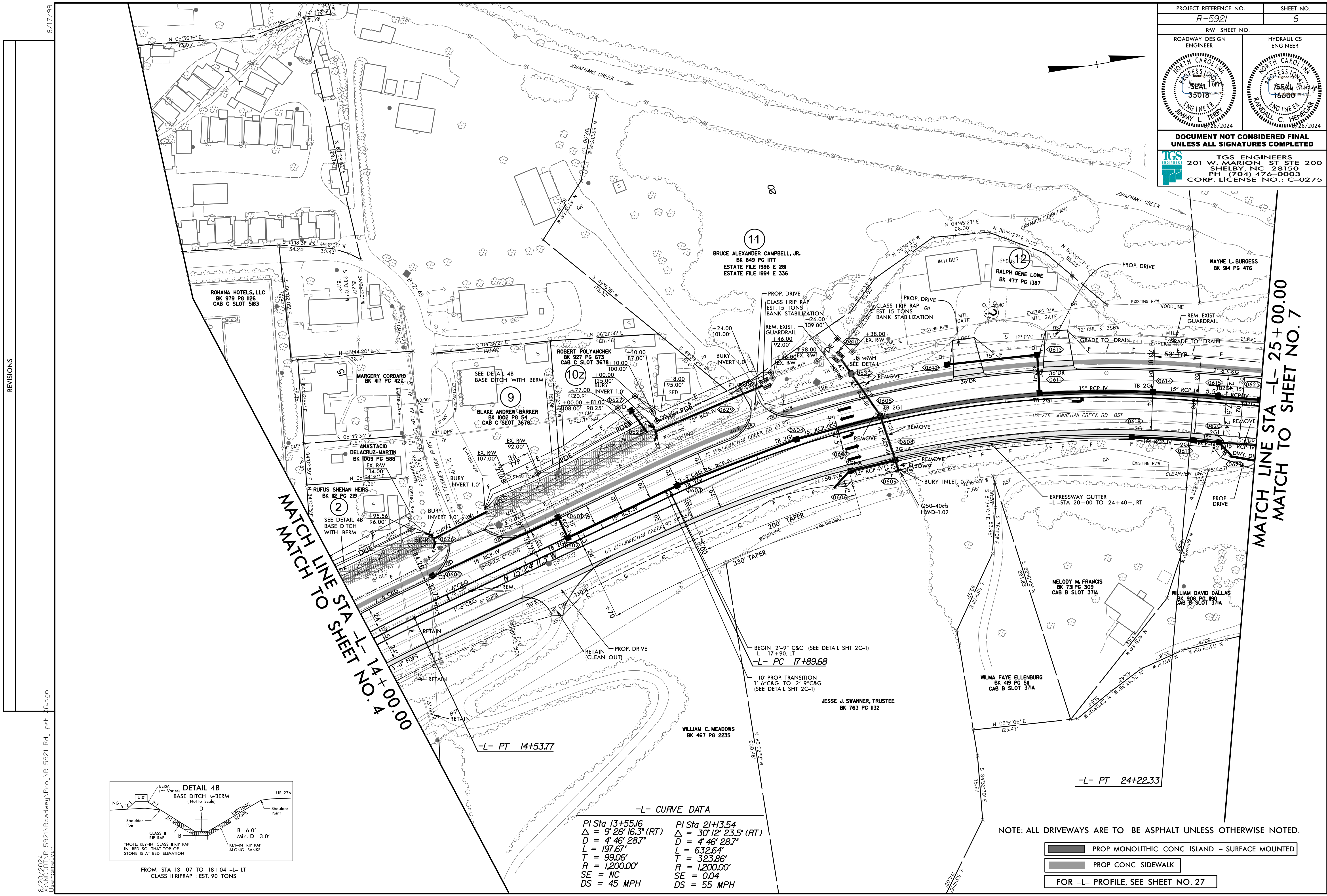


PROJECT REFERENCE NO. R-5921		SHEET NO. 6	
ROADWAY DESIGN ENGINEER		HYDRAULICS ENGINEER	
DOCUMENT NOT CONSIDERED FINAL UNLESS ALL SIGNATURES COMPLETED			
TGS ENGINEERS 201 W. MARION ST STE 200 SHELBY, NC 28150 PH (704) 476-0003 CORP. LICENSE NO.: C-0275			

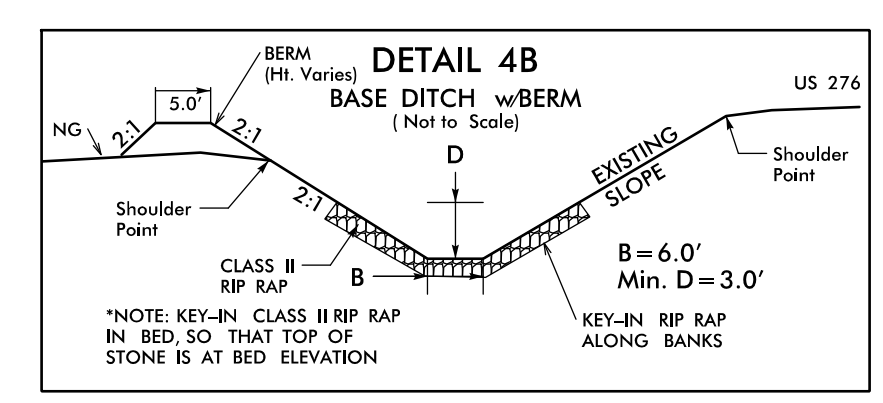


REVISIONS

8/17/99
 8/20/2024
 R:\Roadway\5921\Roadway\Proc\JLR-5921_Rdy_psh.dgn
 JLR

MATCH LINE STA -L- 14+00.00
 MATCH TO SHEET NO. 4

MATCH LINE STA -L- 25+00.00
 MATCH TO SHEET NO. 7



FROM STA 13+07 TO 18+04 -L- LT
CLASS II RIPRAP : EST. 90 TONS

-L- CURVE DATA

PI Sta 13+55.16 $\Delta = 9^\circ 28' 16.3''$ (RT) $D = 4' 46'' 28.7''$ $L = 197.67'$ $T = 99.06'$ $R = 1,200.00'$ $SE = NC$ $DS = 45$ MPH	PI Sta 21+13.54 $\Delta = 30^\circ 12' 23.5''$ (RT) $D = 4' 46'' 28.7''$ $L = 632.64'$ $T = 323.86'$ $R = 1,200.00'$ $SE = 0.04$ $DS = 55$ MPH
---	---

NOTE: ALL DRIVEWAYS ARE TO BE ASPHALT UNLESS OTHERWISE NOTED.

- PROP MONOLITHIC CONC ISLAND - SURFACE MOUNTED
- PROP CONC SIDEWALK
- FOR -L- PROFILE, SEE SHEET NO. 27