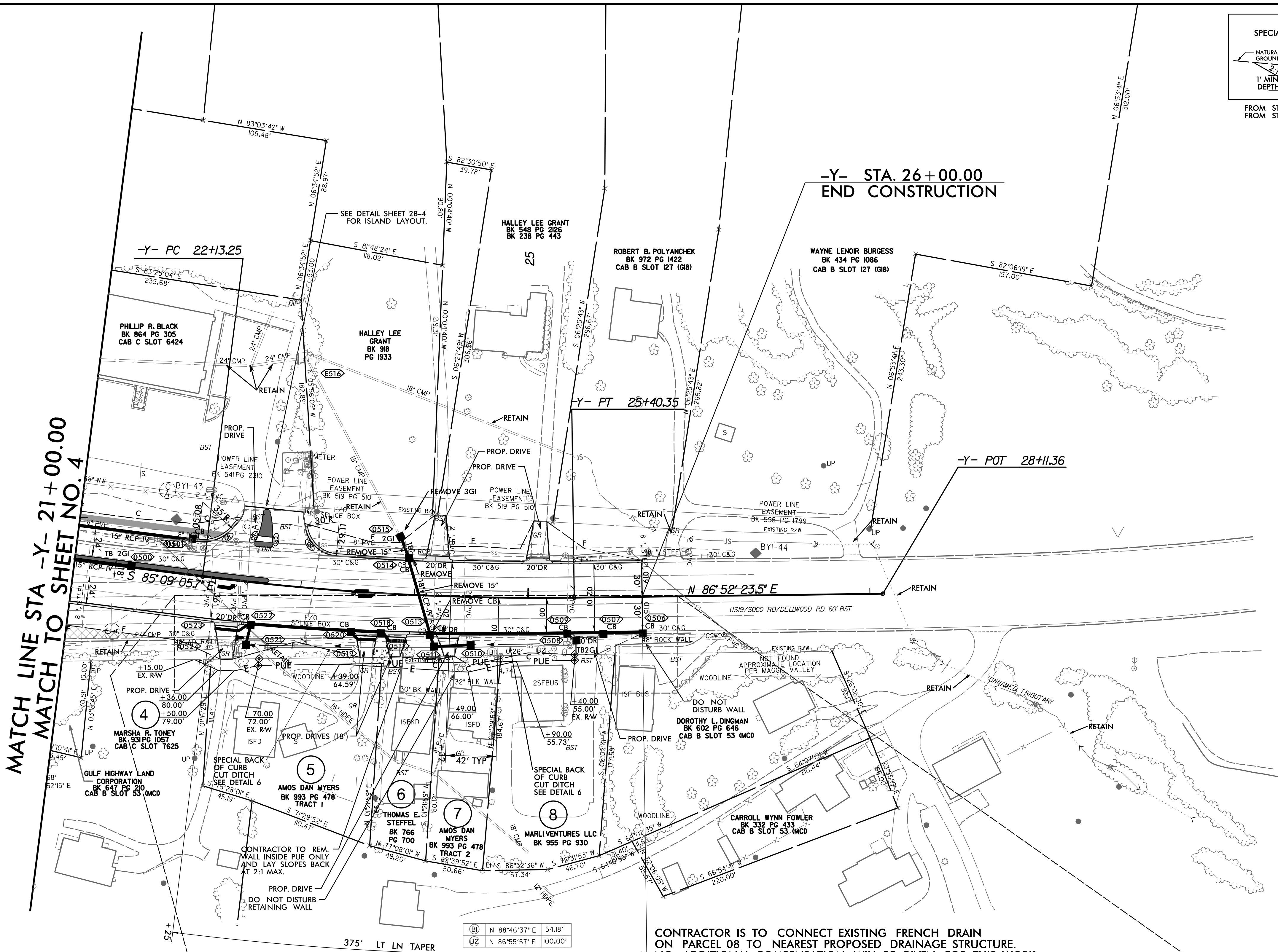


8/17/99

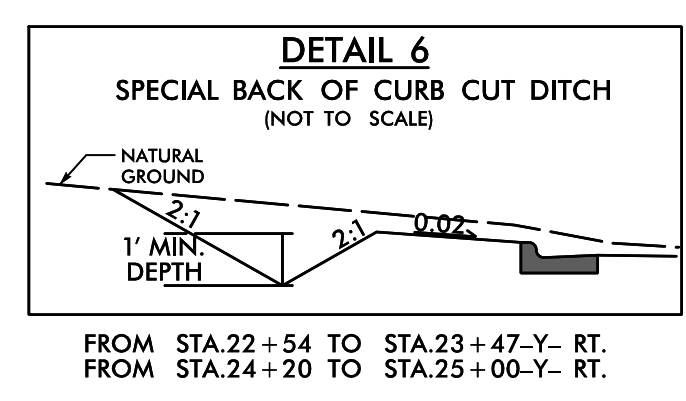
REVISIONS

8/20/2024 R-5921\Roadway\Proj\R-5921_Rdy.psh.dgn
1/26/2024 R-5921\Roadway\Proj\R-5921_Rdy.psh.dgn



MATCH LINE STA -Y- 21+00.00
MATCH TO SHEET NO. 4

-Y- STA. 26+00.00
END CONSTRUCTION

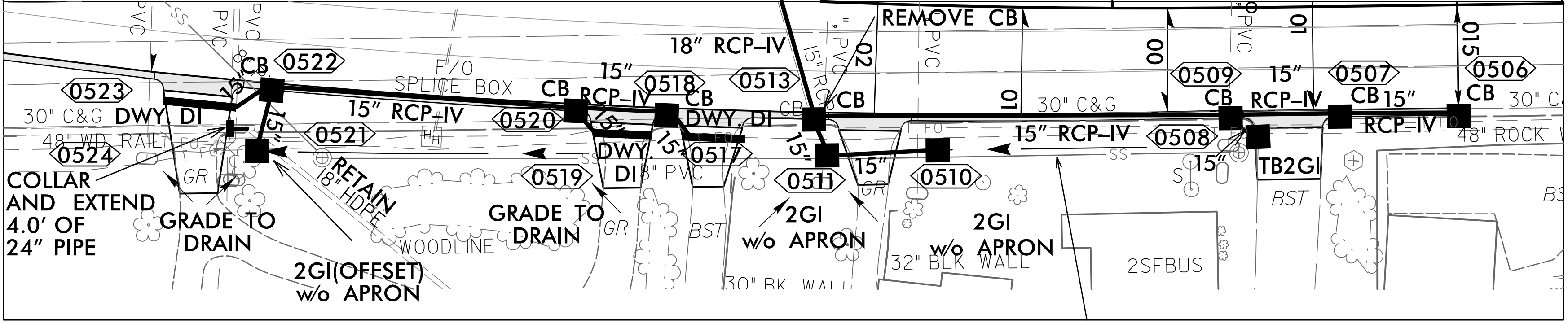


FROM STA. 22+54 TO STA. 23+47-Y- RT.
FROM STA. 24+20 TO STA. 25+00-Y- RT.

PROJECT REFERENCE NO. R-5921	SHEET NO. 5
ROADWAY DESIGN ENGINEER JOSEPH L. TERRY NORTH CAROLINA PROFESSIONAL ENGINEER 35018 8/26/2024	HYDRAULICS ENGINEER RANDALL C. HENKENS NORTH CAROLINA PROFESSIONAL ENGINEER 16600 8/26/2024
DOCUMENT NOT CONSIDERED FINAL UNLESS ALL SIGNATURES COMPLETED	
TGS ENGINEERS 201 W. MARION ST STE 200 SHELBY, NC 28150 PH: (704) 476-0003 CORP. LICENSE NO.: C-0275	

INSET A

-Y- CURVE DATA
 PI Sta 23+77.07
 $\Delta = 7^{\circ} 58' 30.8" (LT)$
 $D = 2^{\circ} 26' 17.2"$
 $L = 327.11'$
 $T = 163.82'$
 $R = 2,350.00'$
 $SE = 0.02$
 $DS = 45 \text{ MPH}$



CONTRACTOR IS TO CONNECT EXISTING FRENCH DRAIN ON PARCEL 08 TO NEAREST PROPOSED DRAINAGE STRUCTURE. NO ADDITIONAL COMPENSATION WILL BE GIVEN FOR THIS WORK.

SEE DETAIL SHEET 2B-4 FOR ISLAND LAYOUT.
NOTE: ALL DRIVEWAYS ARE TO BE ASPHALT UNLESS OTHERWISE NOTED.

- PROP MONOLITHIC CONC ISLAND - SURFACE MOUNTED
 - PAVEMENT REMOVAL
 - PROP CONC SIDEWALK
- FOR -Y- PROFILE, SEE SHEET NO. 38