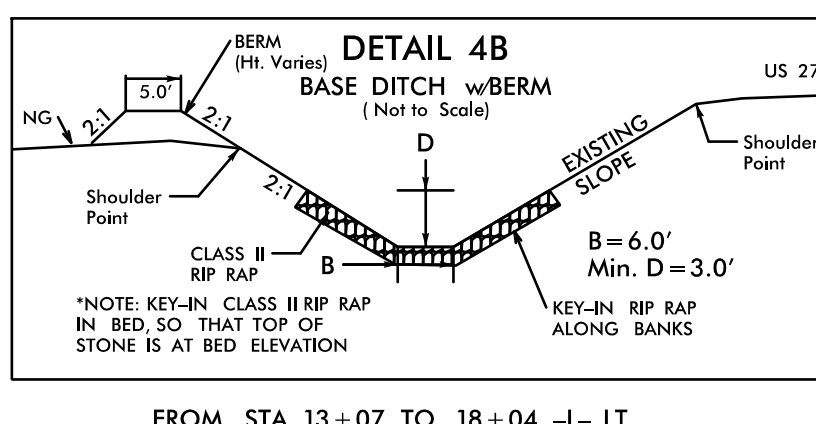
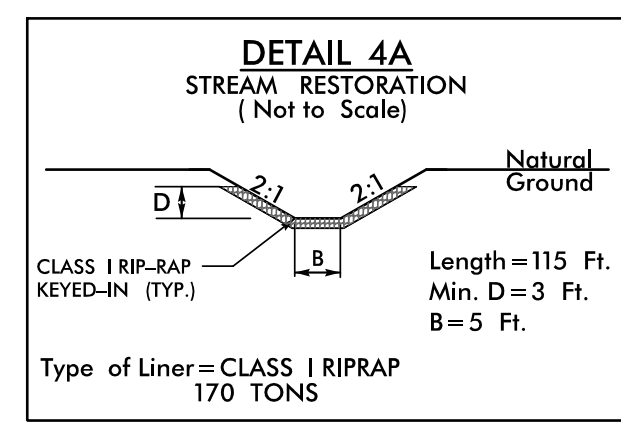
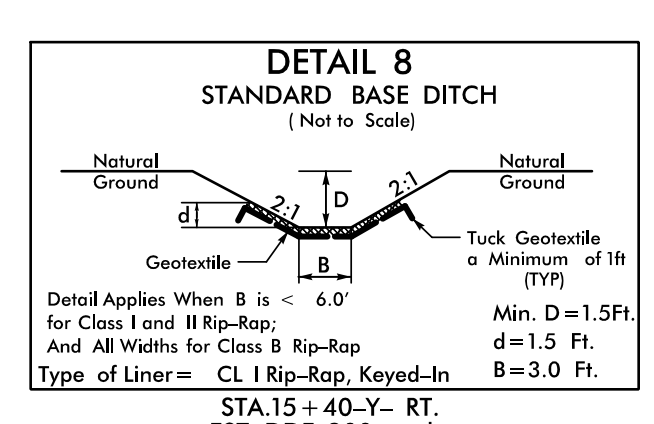


8/17/24



**PEAK HOUR TRAFFIC VOLUMES**  
(Vehicles per Hour)

116 (116)	280 (458)
150 (150)	363 (593)
608 (998)	788 (914)
231 (632)	299 (819)

-L- US 276  
-Y- US 19/DELLWOOD RD

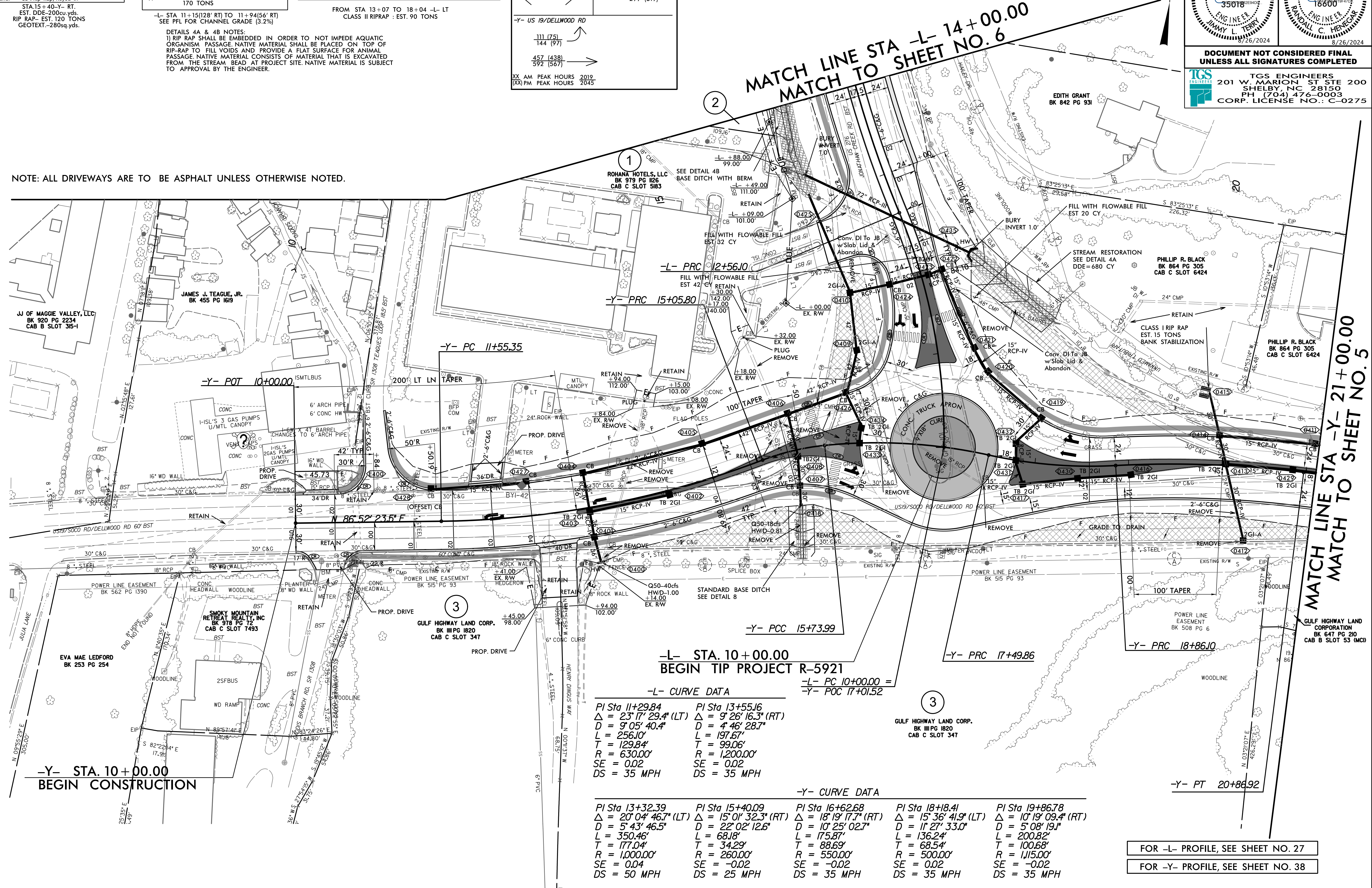
XX AM PEAK HOURS 2019  
[XX] PM PEAK HOURS 2045

**NOTE:**  
SEE DETAIL SHEET 2B-1 FOR ROUNDABOUT LAYOUT

	PROP MONOLITHIC CONC ISLAND - SURFACE MOUNTED
	PROP CONC SIDEWALK
	PROP CONC TRUCK APRON
	PAVEMENT REMOVAL
	PROP CONC ISLAND COVER

PROJECT REFERENCE NO. <b>R-5921</b>	SHEET NO. <b>4</b>
ROADWAY DESIGN ENGINEER <b>JIMMY L. TERRY</b> 35018 8/26/2024	HYDRAULICS ENGINEER <b>RANDALL C. HENEGHAN</b> 18600 8/26/2024
<b>DOCUMENT NOT CONSIDERED FINAL</b> UNLESS ALL SIGNATURES COMPLETED	
TGS ENGINEERS 201 W. MARION ST STE 200 SHELBY, NC 28150 PH (704) 476-0003 CORP. LICENSE NO.: C-0275	

**NOTE: ALL DRIVEWAYS ARE TO BE ASPHALT UNLESS OTHERWISE NOTED.**



**-L- CURVE DATA**

PI Sta 11+29.84 Δ = 23° 17' 29.4" (LT) D = 9' 05' 40.4" L = 256.10' T = 129.84' R = 630.00' SE = 0.02 DS = 35 MPH	PI Sta 13+55.16 Δ = 9° 26' 16.3" (RT) D = 4' 46' 28.7" L = 197.67' T = 99.06' R = 1200.00' SE = 0.02 DS = 35 MPH
--	---

**-Y- CURVE DATA**

PI Sta 13+32.39 Δ = 20° 04' 46.7" (LT) D = 5' 43' 46.5" L = 350.46' T = 177.04' R = 1000.00' SE = 0.04 DS = 50 MPH	PI Sta 15+40.09 Δ = 15° 01' 32.3" (RT) D = 22' 02' 12.6" L = 68.18' T = 34.29' R = 260.00' SE = -0.02 DS = 25 MPH	PI Sta 16+62.68 Δ = 18° 19' 17.7" (RT) D = 10' 25' 02.7" L = 175.87' T = 88.59' R = 550.00' SE = -0.02 DS = 35 MPH	PI Sta 18+18.41 Δ = 15° 36' 41.9" (LT) D = 11' 27' 33.0" L = 136.24' T = 100.68' R = 500.00' SE = 0.02 DS = 35 MPH	PI Sta 19+86.78 Δ = 10° 19' 09.4" (RT) D = 5' 08' 19.1" L = 200.82' T = 111.500' R = 1,115.00' SE = -0.02 DS = 35 MPH
---	--	---	---	--

FOR -L- PROFILE, SEE SHEET NO. 27

FOR -Y- PROFILE, SEE SHEET NO. 38

8/20/2024 R:\Roadway\Proj\R-5921\_Rdy\_psh.dwg  
licustama