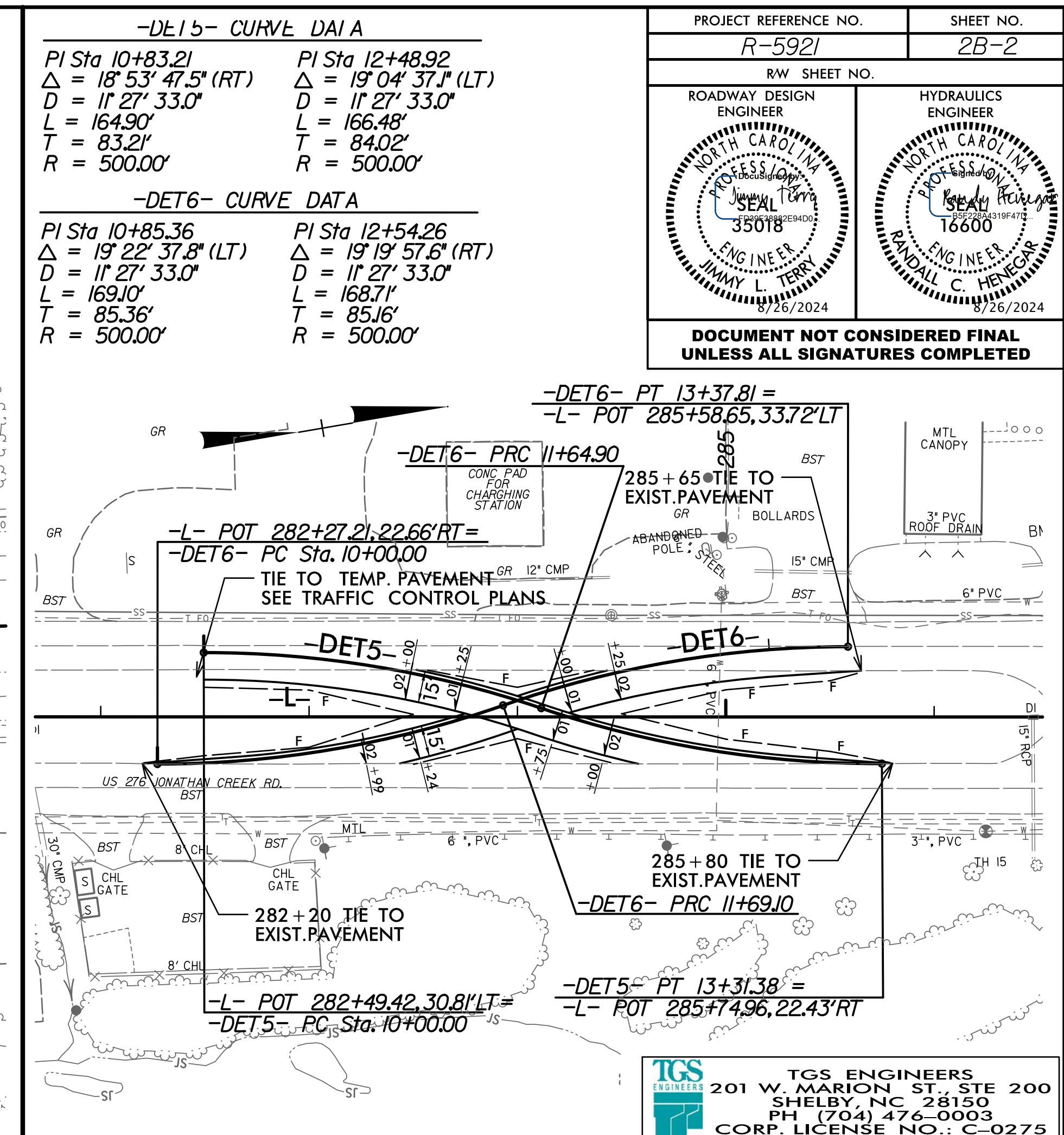
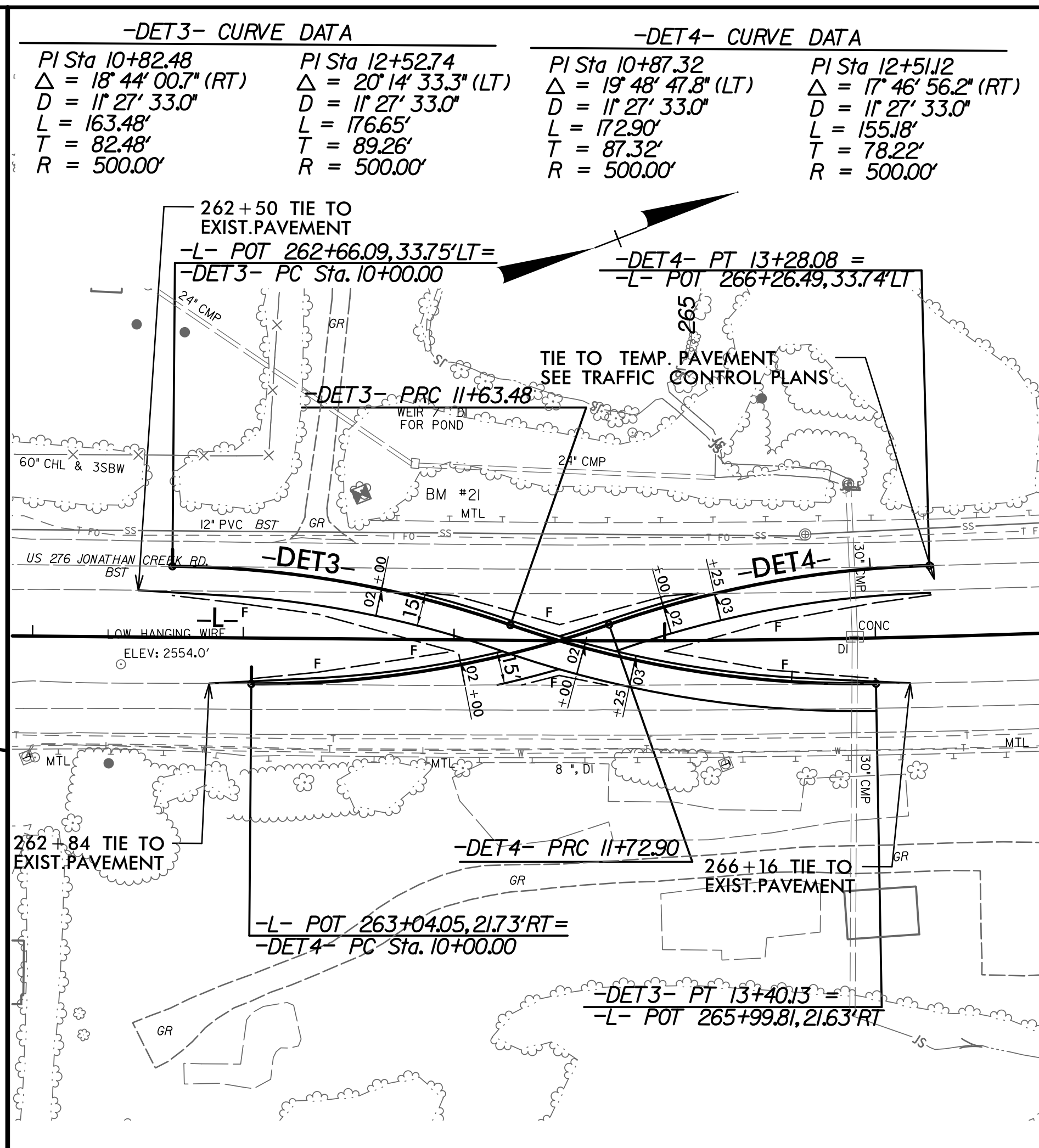
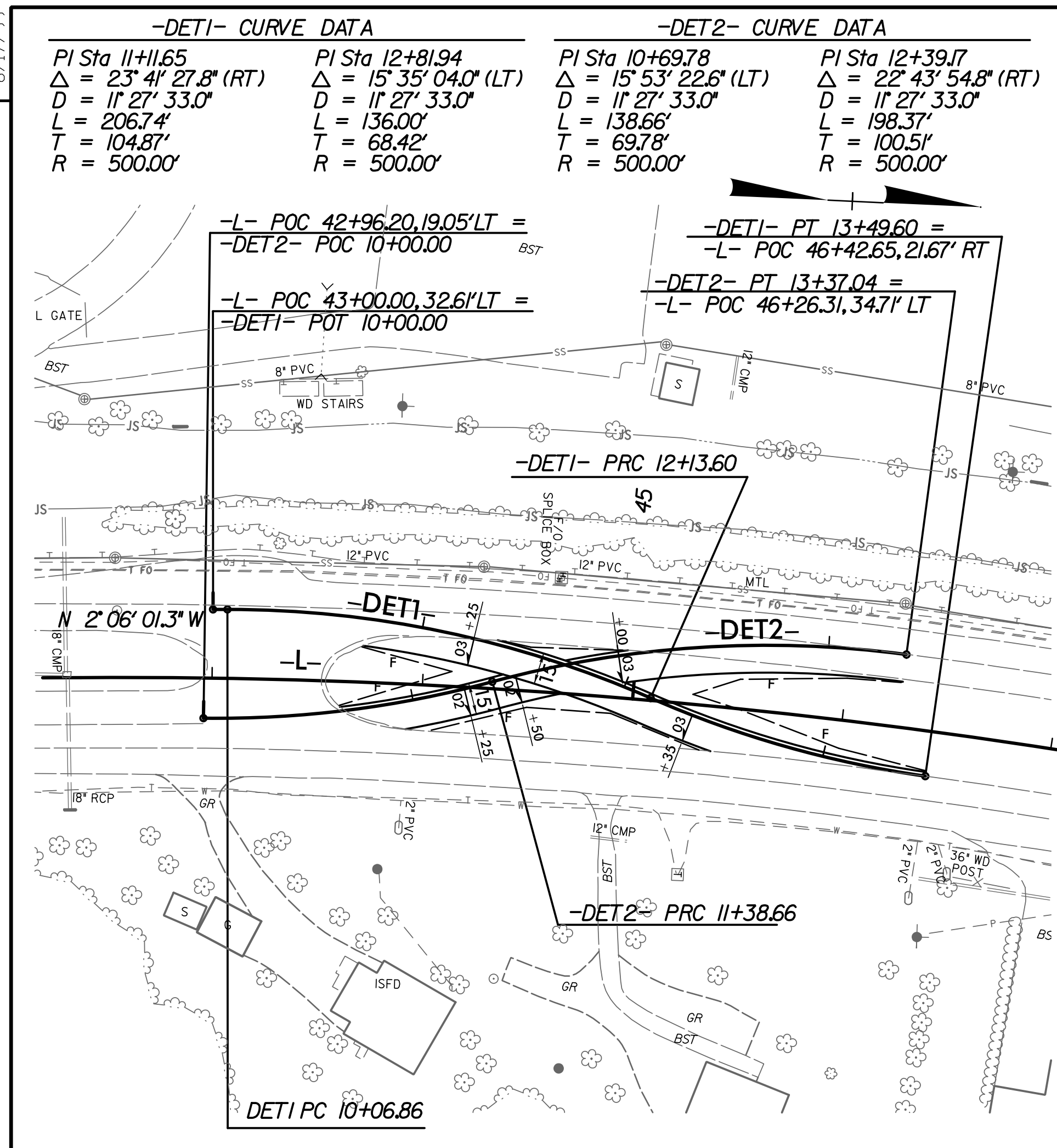


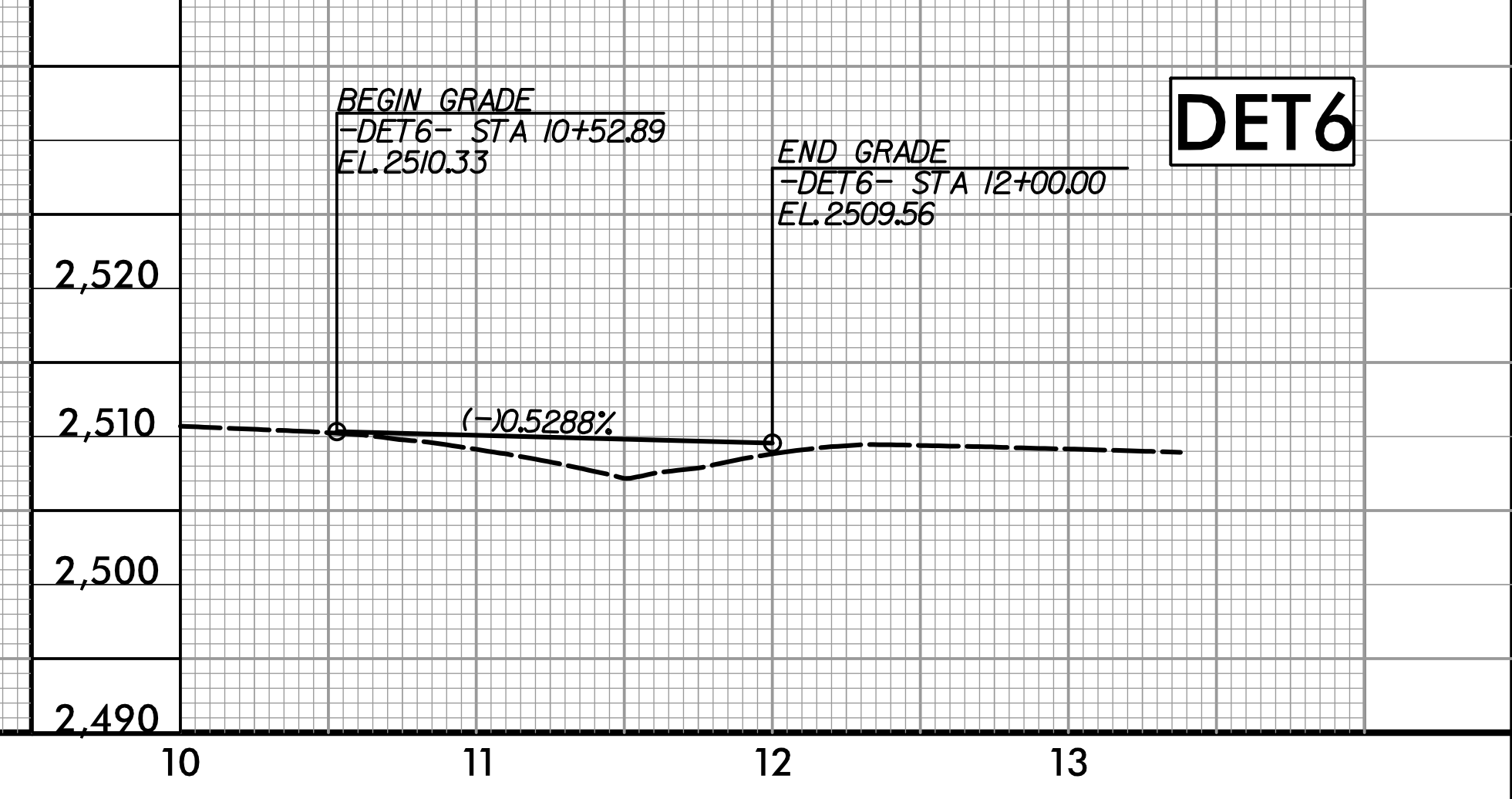
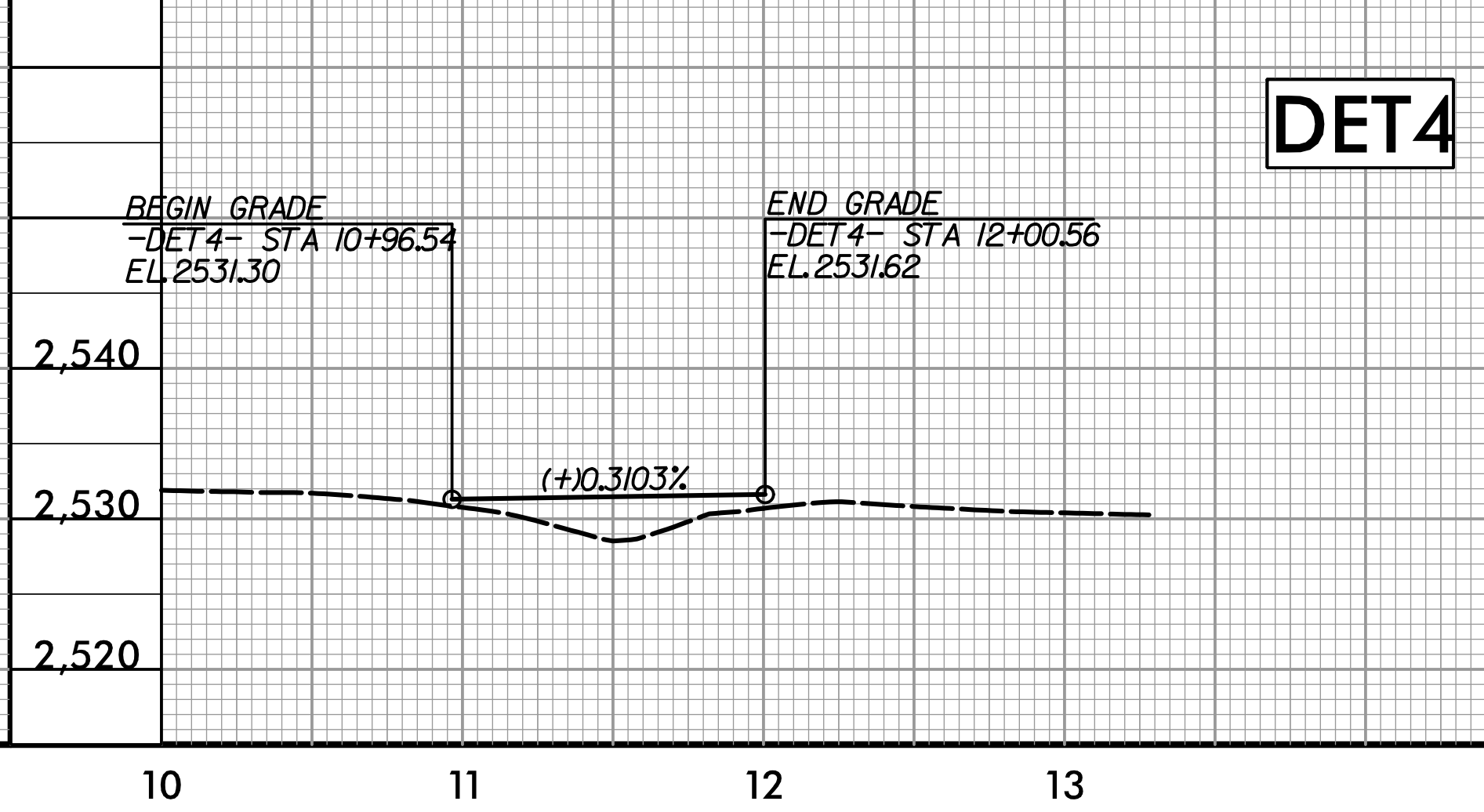
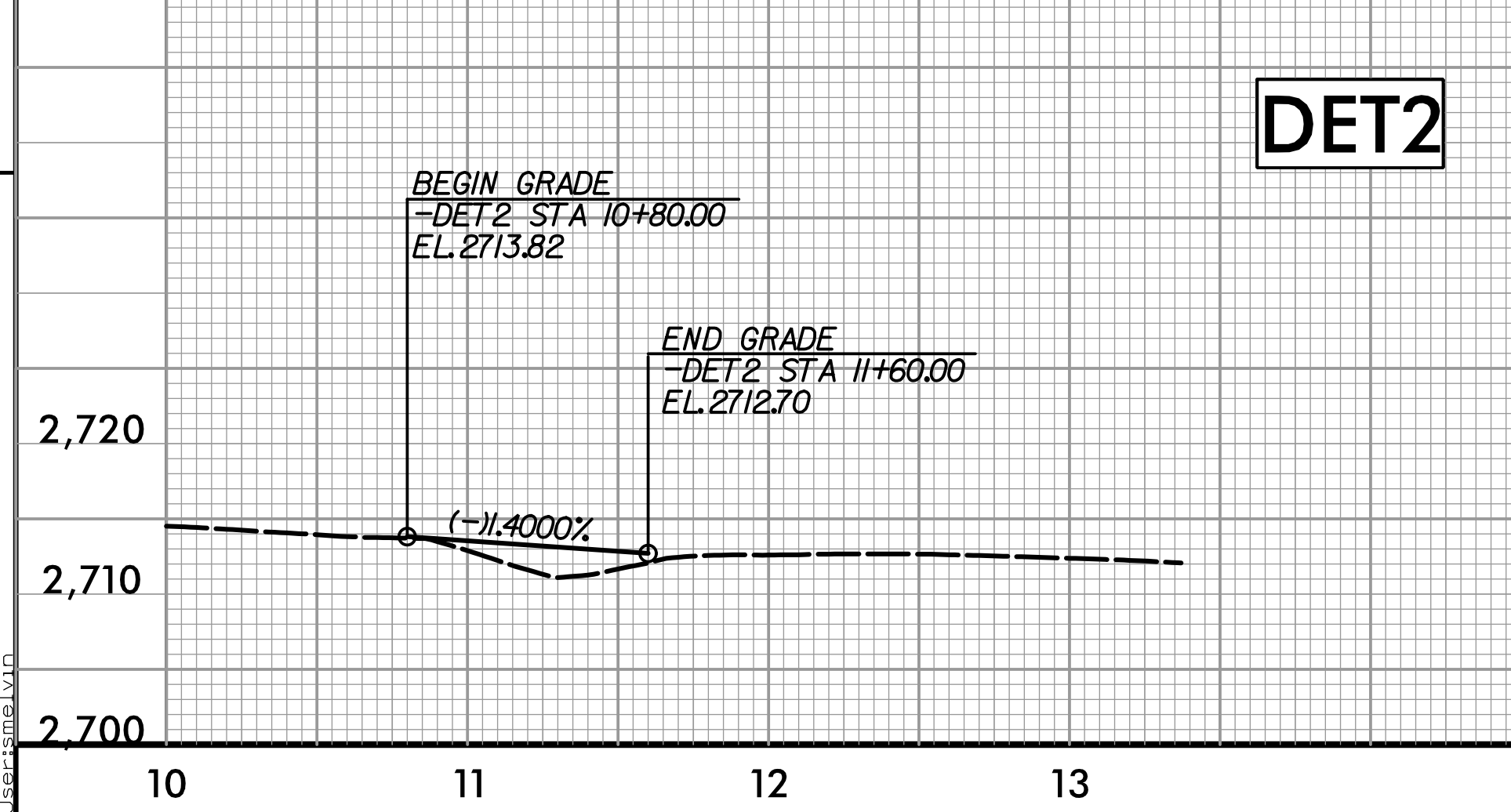
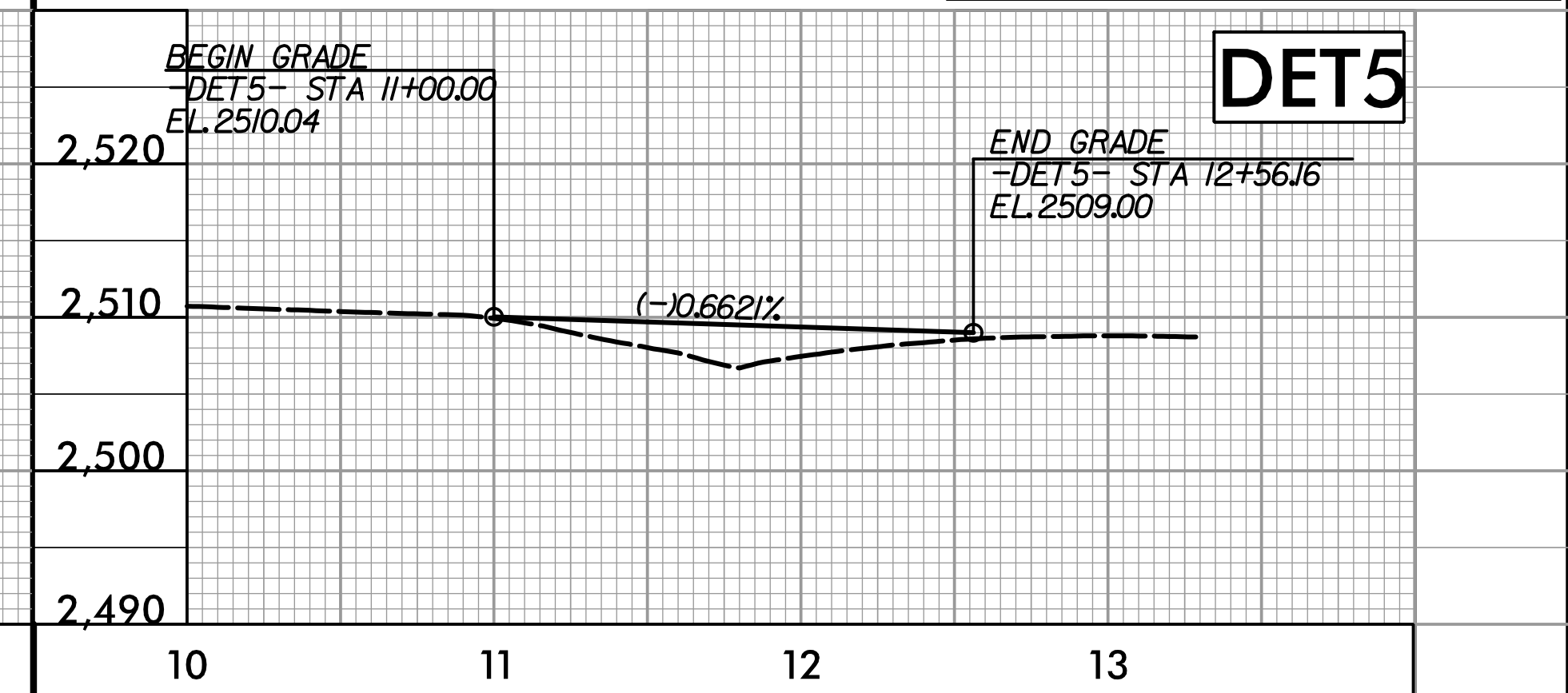
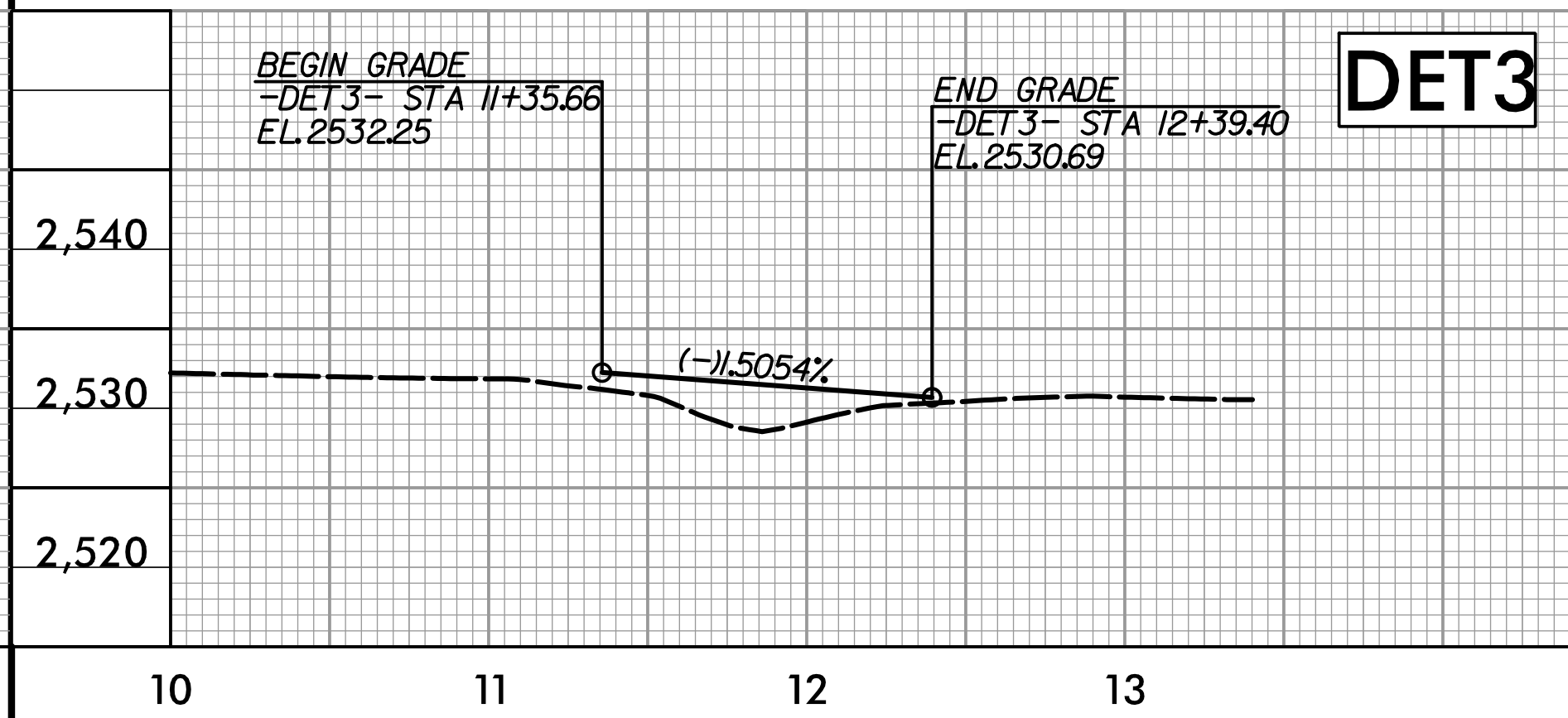
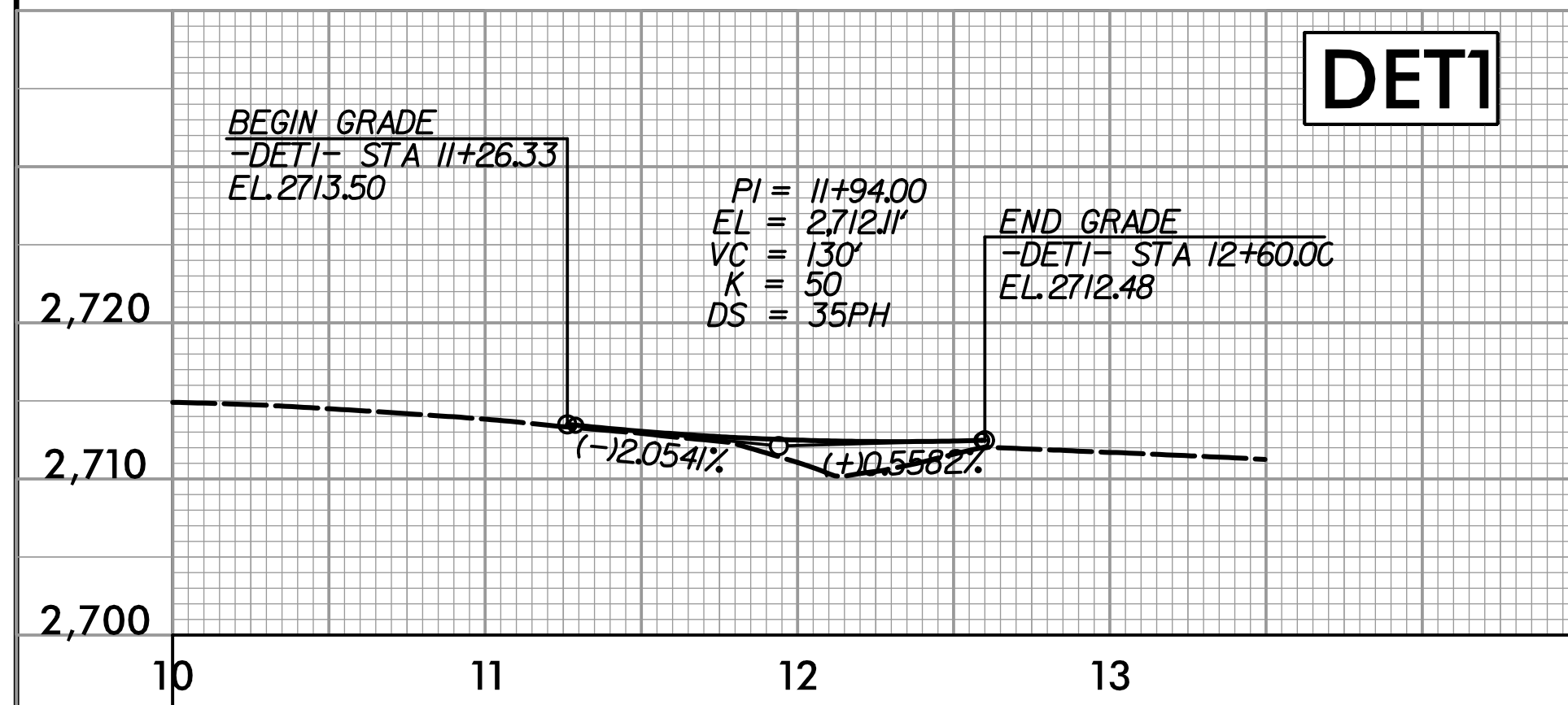
8/17/24



PROJECT REFERENCE NO. R-5921	SHEET NO. 2B-2
ROADWAY DESIGN ENGINEER JAMES L. TERRY 35018 8/26/2024	HYDRAULICS ENGINEER KYLE HAYES 16600 8/26/2024

**DOCUMENT NOT CONSIDERED FINAL  
UNLESS ALL SIGNATURES COMPLETED**

REVISIONS



**TGS ENGINEERS**  
201 W. MARION ST., STE 200  
SHELBY, NC 28150  
PH (704) 476-0003  
CORP. LICENSE NO.: C-0275

5/24/2024 R-5921-Roadway-Proj-R-5921-Rdy-Deta\_L-2B-2 (Detour Crossover).dgn  
lic:esmeal.vtd