

TIP PROJECT: U-6020

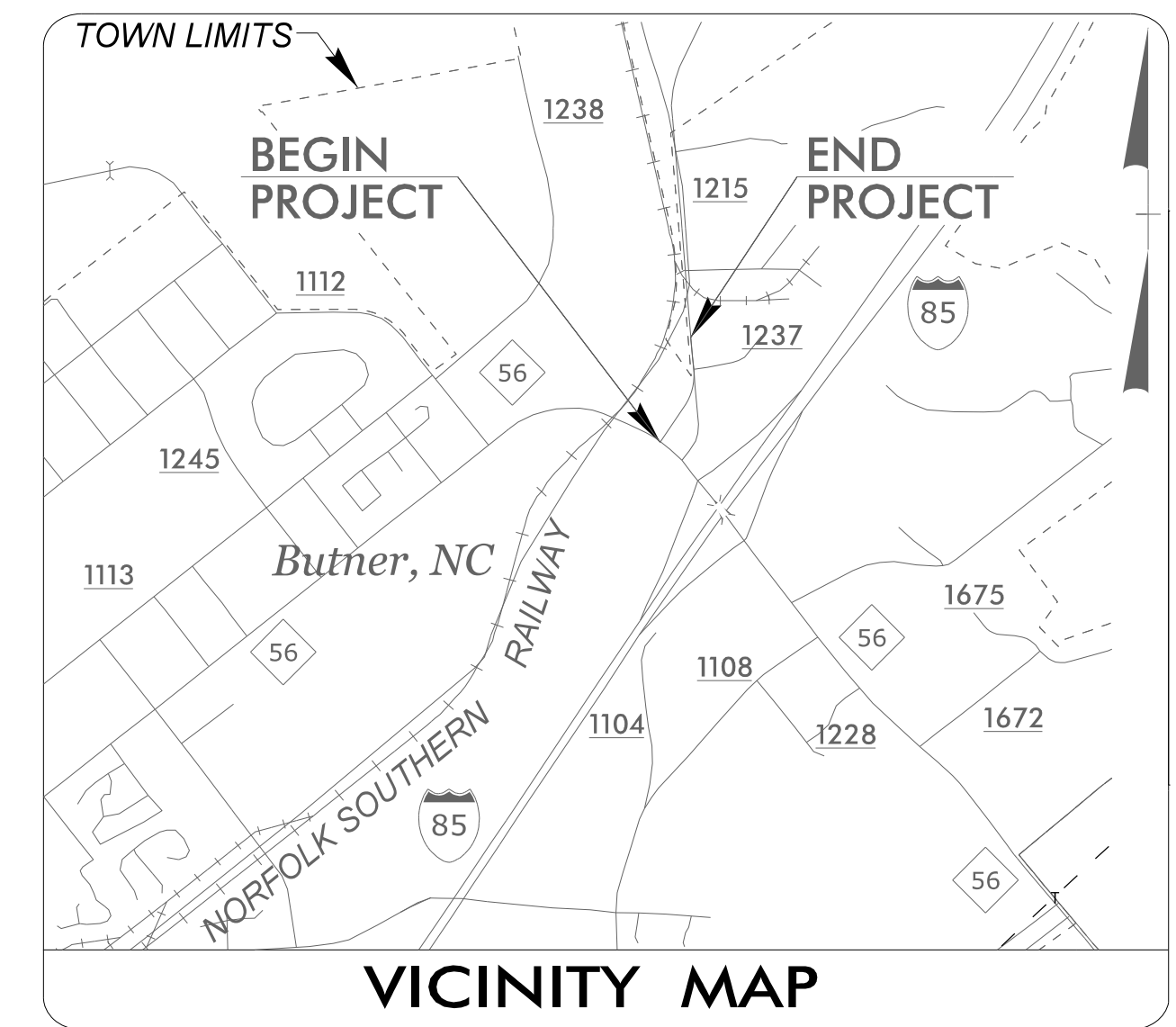
STATE OF NORTH CAROLINA
DIVISION OF HIGHWAYS

T.I.P. NO.	SHEET NO.
U-6020	UO-1

NOTE:
ALL UTILITY WORK SHOWN ON THIS SHEET IS DONE BY OTHERS.
NO PAYMENT WILL BE MADE TO THE CONTRACTOR FOR UTILITY WORK SHOWN ON THIS SHEET.

**UTILITIES BY OTHERS PLANS
GRANVILLE COUNTY**

**LOCATION: REALIGNMENT OF SR 1215 (WEST LYON STATION ROAD)
AT NC 56 (EAST C STREET) IN BUTNER**
TYPE OF WORK: POWER DISTRIBUTION, GAS DISTRIBUTION & TELECOM



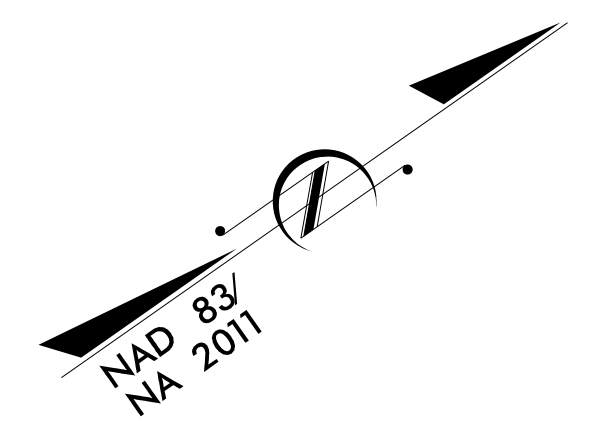
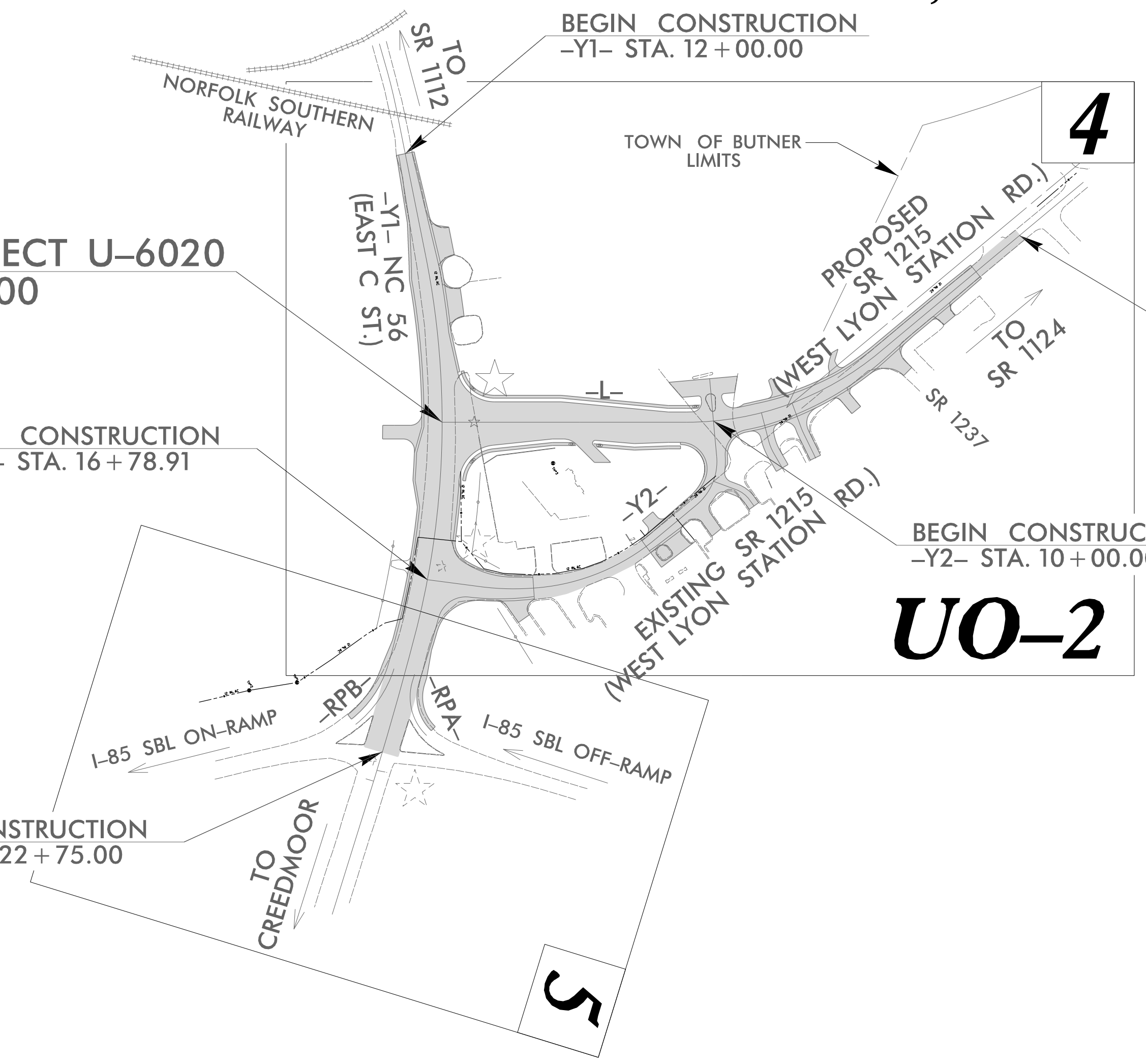
BEGIN TIP PROJECT U-6020
-L- STA. 10 + 00.00

END CONSTRUCTION
-Y2- STA. 16 + 78.91

END CONSTRUCTION
-Y1- STA. 22 + 75.00

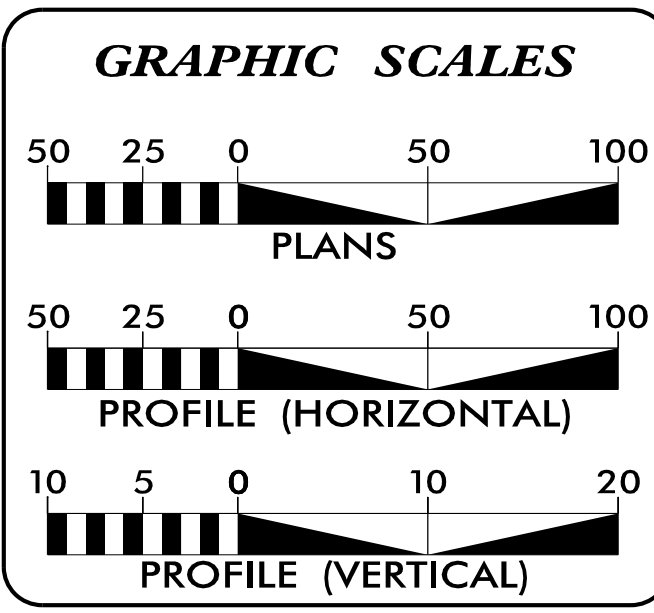
BEGIN CONSTRUCTION
-Y1- STA. 12 + 00.00

END TIP PROJECT U-6020
-L- STA. 21 + 25.00



- PROPOSED SIGNAL
- EXISTING SIGNAL

CLEARING ON THIS PROJECT SHALL BE PERFORMED TO THE LIMITS ESTABLISHED BY METHOD III.
THIS PROJECT IS WITHIN THE MUNICIPAL BOUNDARIES OF BUTNER.



INDEX OF SHEETS

SHEET NO.	DESCRIPTION
UO-1	TITLE SHEET
UO-2	UBO PLAN SHEET

UTILITY OWNERS WITH CONFLICTS

(A) POWER DISTRIBUTION - DUKE ENERGY - DEP
 (B) POWER DISTRIBUTION - DUKE ENERGY - DEC
 (C) GAS DISTRIBUTION - DOMINION ENERGY
 (D) TELECOM - CHARTERSPECTRUM

PREPARED IN THE OFFICE OF:

HINDE ENGINEERING
 License No. C-2639
 401 Harrison Oaks Blvd., Suite 220 Cary, NC 27513
 (919)-653-0001

Michael E. Davis UTILITY COORDINATION PROJECT MANAGER
 Harris Winters PROJECT UTILITY COORDINATOR
 James N. Arnold PROJECT UTILITY DESIGNER

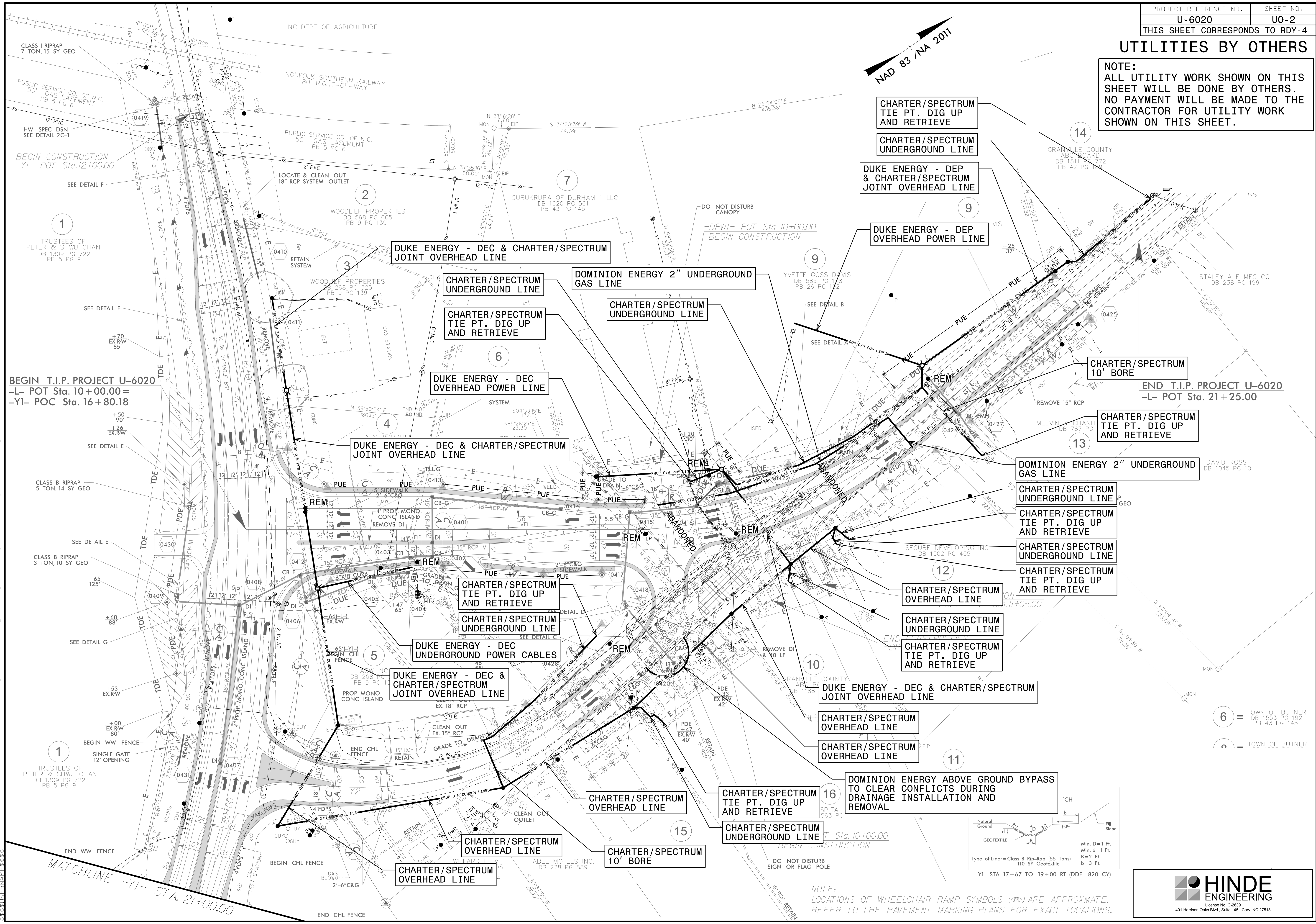
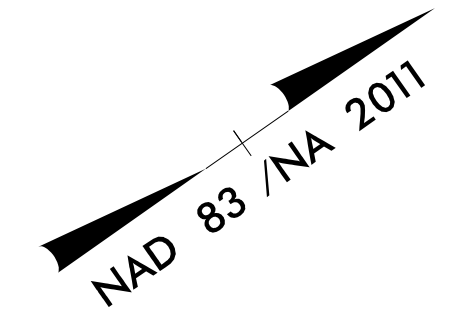
**DIVISION OF HIGHWAYS
UTILITIES UNIT**
 1555 MAIL SERVICES CENTER
 RALEIGH NC 27699-1555
 PHONE (919) 707-6690
 FAX (919) 250-4151

Joey Hopkins, P.E. DIVISION ENGINEER
 Donald Proper DIVISION UTILITIES ENGINEER
 Monroe Brown UTILITY COORDINATOR

20-DEC-2019 12:21 S:\Server_Files\PROJECTS\2017\A201705.00_TGS_U-6020\Design\Utilities\Engineering\UBO\Proj\U6020_ut_1.sh_U001.psh.dgn

UTILITIES BY OTHERS

NOTE:
ALL UTILITY WORK SHOWN ON THIS SHEET WILL BE DONE BY OTHERS. NO PAYMENT WILL BE MADE TO THE CONTRACTOR FOR UTILITY WORK SHOWN ON THIS SHEET.



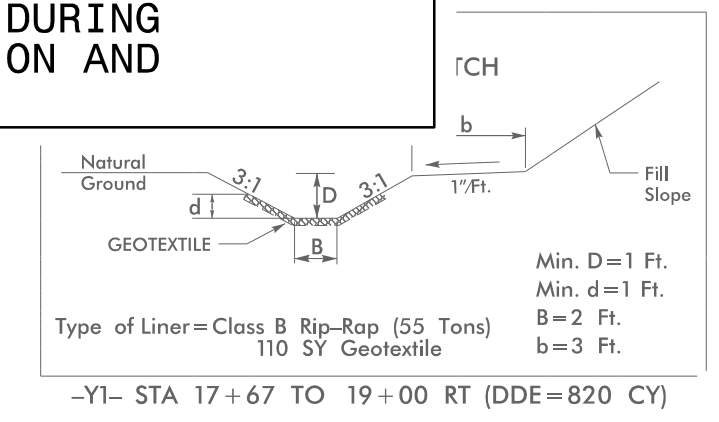
BEGIN T.I.P. PROJECT U-6020
-L- POT Sta. 10+00.00=
-Y1- POC Sta. 16+80.18

END T.I.P. PROJECT U-6020
-L- POT Sta. 21+25.00

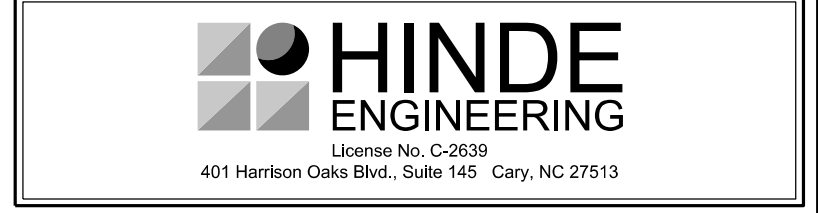
20-DEC-2019 12:21 \\projects\2017\201705\00_TGS-U-6020\Design\Utilities\UBO\Proj\U6020.ut_rdy4_U002_psh.dgn
 3:38:58 PM
 3:38:58 PM

6 = TOWN OF BUTNER
DB 1553 PG 192
PB 43 PG 145

7 = TOWN OF BUTNER

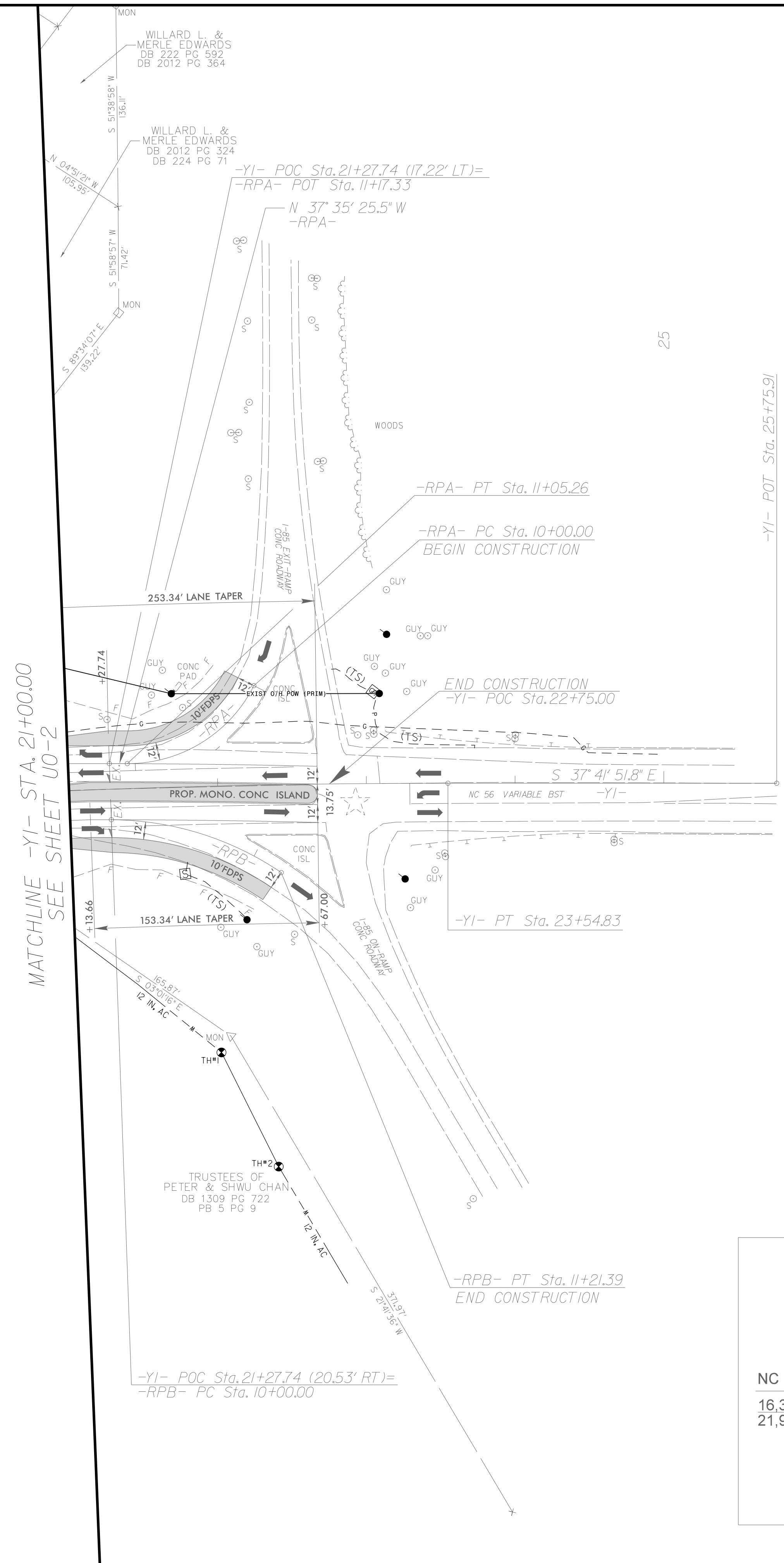
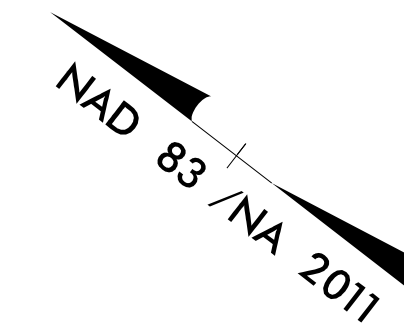


NOTE:
LOCATIONS OF WHEELCHAIR RAMP SYMBOLS (♿) ARE APPROXIMATE. REFER TO THE PAVEMENT MARKING PLANS FOR EXACT LOCATIONS.



UTILITIES BY OTHERS

NOTE:
 ALL UTILITY WORK SHOWN ON THIS SHEET WILL BE DONE BY OTHERS.
 NO PAYMENT WILL BE MADE TO THE CONTRACTOR FOR UTILITY WORK SHOWN ON THIS SHEET.



I-85 SB RAMP (EXIT)		2,500	3,800	
	1,200	1,200		
	1,300	2,500		
NC 56			NC 56	
16,300	1,400	1,600	16,500	
21,900	1,900	2,900	24,100	
I-85 SB RAMP (ENTRANCE)		3,100	4,800	
				2017 ADT
				2040

23-APR-2019 14:45 PROJECTS\2017\A2017705-00-TGS-U-6020\Design\Utilities\Engineering\UBO\Proj\U6020.ut_r.dwg U003.psh.dgn
 338561181