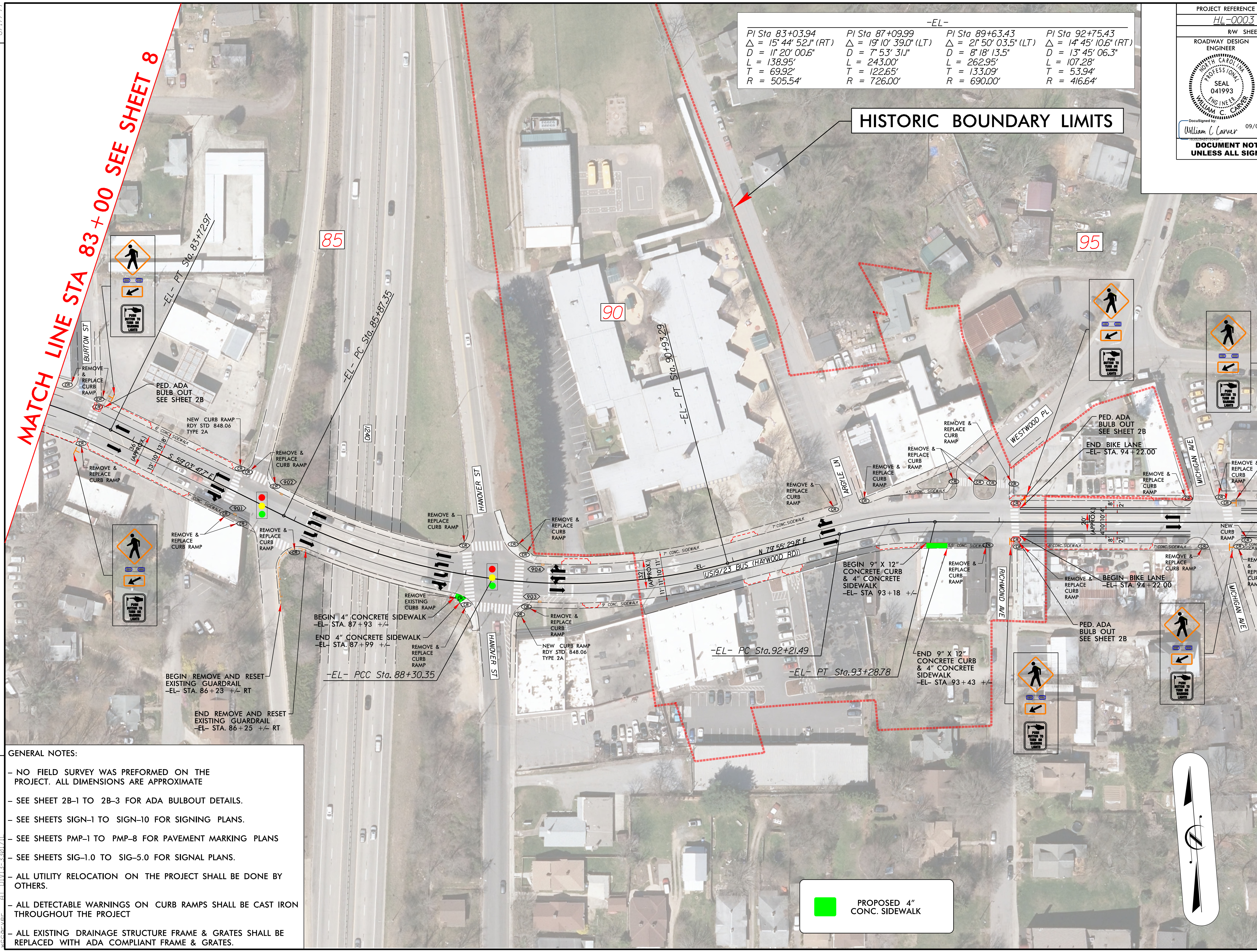


-EL-			
PI Sta 83+03.94	PI Sta 87+09.99	PI Sta 89+63.43	PI Sta 92+75.43
$\Delta = 15^{\circ} 44' 52.1''$ (RT)	$\Delta = 19^{\circ} 10' 39.0''$ (LT)	$\Delta = 2^{\circ} 50' 03.5''$ (LT)	$\Delta = 14^{\circ} 45' 10.6''$ (RT)
D = 11' 20' 00.6"	D = 7' 53' 31.1"	D = 8' 18' 13.5"	D = 13' 45' 06.3"
L = 138.95'	L = 243.00'	L = 262.95'	L = 107.28'
T = 69.92'	T = 122.65'	T = 133.09'	T = 53.94'
R = 505.54'	R = 726.00'	R = 690.00'	R = 416.64'


HISTORIC BOUNDARY LIMITS

MATCH LINE STA 83+00 SEE SHEET 8

MATCH LINE STA 97+00 SEE SHEET 10



- GENERAL NOTES:**
- NO FIELD SURVEY WAS PERFORMED ON THE PROJECT. ALL DIMENSIONS ARE APPROXIMATE
 - SEE SHEET 2B-1 TO 2B-3 FOR ADA BULBOUT DETAILS.
 - SEE SHEETS SIGN-1 TO SIGN-10 FOR SIGNING PLANS.
 - SEE SHEETS PMP-1 TO PMP-8 FOR PAVEMENT MARKING PLANS
 - SEE SHEETS SIG-1.0 TO SIG-5.0 FOR SIGNAL PLANS.
 - ALL UTILITY RELOCATION ON THE PROJECT SHALL BE DONE BY OTHERS.
 - ALL DETECTABLE WARNINGS ON CURB RAMPS SHALL BE CAST IRON THROUGHOUT THE PROJECT
 - ALL EXISTING DRAINAGE STRUCTURE FRAME & GRATES SHALL BE REPLACED WITH ADA COMPLIANT FRAME & GRATES.

 PROPOSED 4" CONC. SIDEWALK



REVISIONS

8/17/99
 9/25/2024 10:09 Buncombe,SR 3548 Haywood Road, Roadway, Proj, Haywood_Rd_DDC_psh9.dgn
 5/2/2024 10:09 Buncombe,SR 3548 Haywood Road, Roadway, Proj, Haywood_Rd_DDC_psh9.dgn
 5/2/2024 10:09 Buncombe,SR 3548 Haywood Road, Roadway, Proj, Haywood_Rd_DDC_psh9.dgn