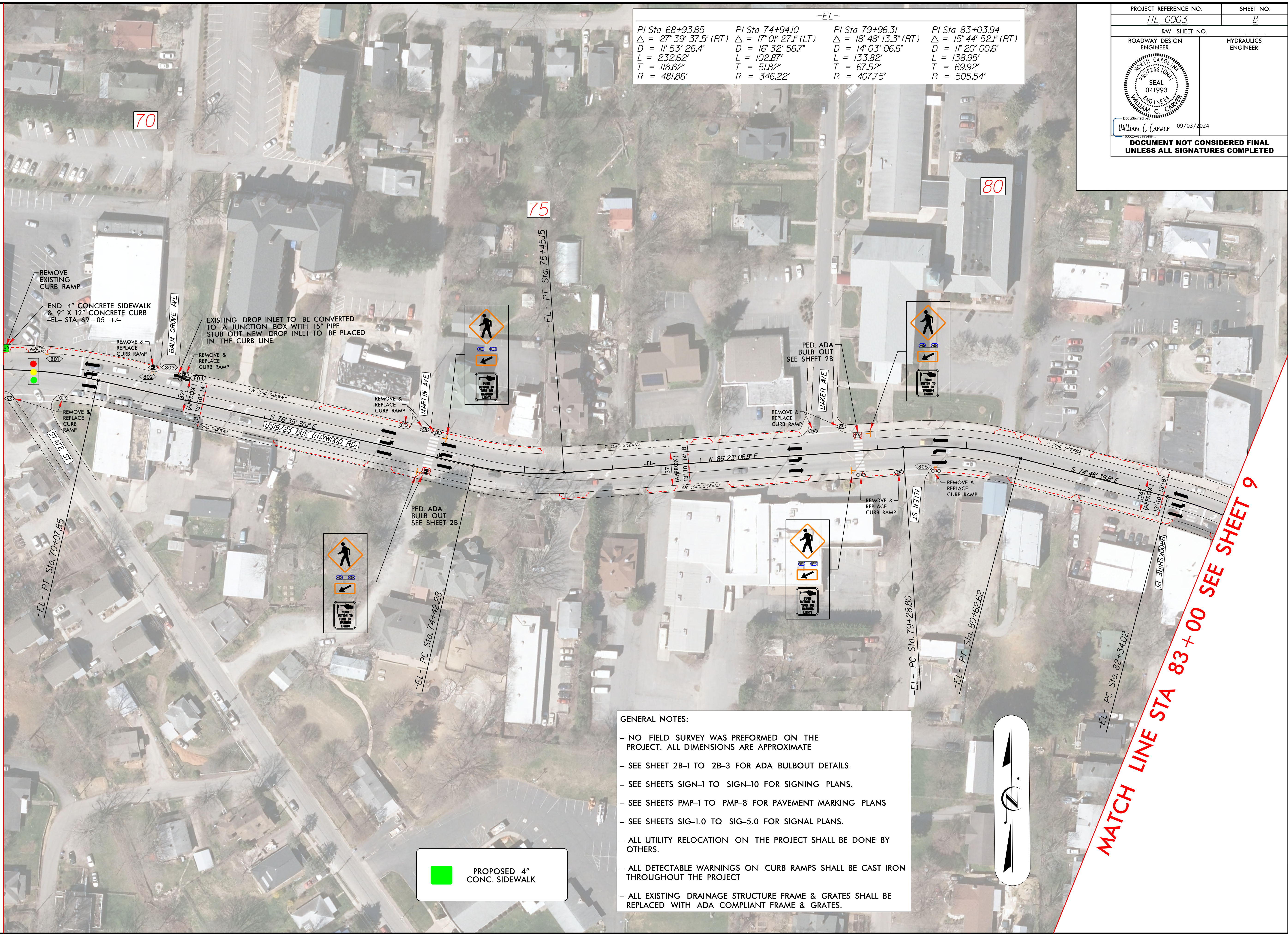


-EL-			
PI Sta 68+93.85	PI Sta 74+94.10	PI Sta 79+96.31	PI Sta 83+03.94
$\Delta = 27' 39" 37.5" (RT)$	$\Delta = 17' 01" 27.1" (LT)$	$\Delta = 18' 48" 13.3" (RT)$	$\Delta = 15' 44" 52.1" (RT)$
$D = 11' 53" 26.4"$	$D = 16' 32" 56.7"$	$D = 14' 03" 06.6"$	$D = 11' 20" 00.6"$
$L = 232.62'$	$L = 102.87'$	$L = 133.82'$	$L = 138.95'$
$T = 118.62'$	$T = 51.82'$	$T = 67.52'$	$T = 69.92'$
$R = 481.86'$	$R = 346.22'$	$R = 407.75'$	$R = 505.54'$

MATCH LINE STA 69+00 SEE SHEET 7

MATCH LINE STA 83+00 SEE SHEET 9



REVISIONS

8/17/24
 SR 3548 Haywood Road, Haywood Rd, DDC, psh8.dgn
 09/03/2024 09:59
 53,000 Project
 11/13/2021
 11/13/2021

PROPOSED 4" CONC. SIDEWALK

- GENERAL NOTES:**
- NO FIELD SURVEY WAS PERFORMED ON THE PROJECT. ALL DIMENSIONS ARE APPROXIMATE
 - SEE SHEET 2B-1 TO 2B-3 FOR ADA BULBOUT DETAILS.
 - SEE SHEETS SIGN-1 TO SIGN-10 FOR SIGNING PLANS.
 - SEE SHEETS PMP-1 TO PMP-8 FOR PAVEMENT MARKING PLANS
 - SEE SHEETS SIG-1.0 TO SIG-5.0 FOR SIGNAL PLANS.
 - ALL UTILITY RELOCATION ON THE PROJECT SHALL BE DONE BY OTHERS.
 - ALL DETECTABLE WARNINGS ON CURB RAMP SHALL BE CAST IRON THROUGHOUT THE PROJECT
 - ALL EXISTING DRAINAGE STRUCTURE FRAME & GRATES SHALL BE REPLACED WITH ADA COMPLIANT FRAME & GRATES.

