

| -EL- | | | | | | | |
|--------------------------------------|--------------------------------------|--------------------------------------|--------------------------------------|--------------------------------------|-------------------------------------|--------------------------------------|--|
| PI Sta 54+58.70 | PI Sta 58+59.63 | PI Sta 61+9.51 | PI Sta 64+36.18 | PI Sta 65+49.25 | PI Sta 66+58.99 | PI Sta 68+93.85 | |
| $\Delta = 16^{\circ} 30' 48.9" (LT)$ | $\Delta = 39^{\circ} 28' 49.7" (LT)$ | $\Delta = 25^{\circ} 52' 51.5" (LT)$ | $\Delta = 17^{\circ} 28' 57.2" (RT)$ | $\Delta = 10^{\circ} 44' 11.5" (RT)$ | $\Delta = 4^{\circ} 16' 41.1" (RT)$ | $\Delta = 27^{\circ} 39' 37.5" (RT)$ | |
| D = 10' 19' 34.3" | D = 22' 10' 10.9" | D = 32' 00' 53.0" | D = 14' 41' 28.4" | D = 9' 57' 52.1" | D = 3' 49' 11.0" | D = 1' 53' 26.4" | |
| L = 159.92' | L = 178.08' | L = 80.84' | L = 119.00' | L = 107.75' | L = 112.00' | L = 232.62' | |
| T = 80.52' | T = 92.74' | T = 41.12' | T = 59.97' | T = 54.03' | T = 56.03' | T = 118.62' | |
| R = 554.86' | R = 258.44' | R = 178.97' | R = 390.00' | R = 575.00' | R = 1,500.00' | R = 481.86' | |

GENERAL NOTES:

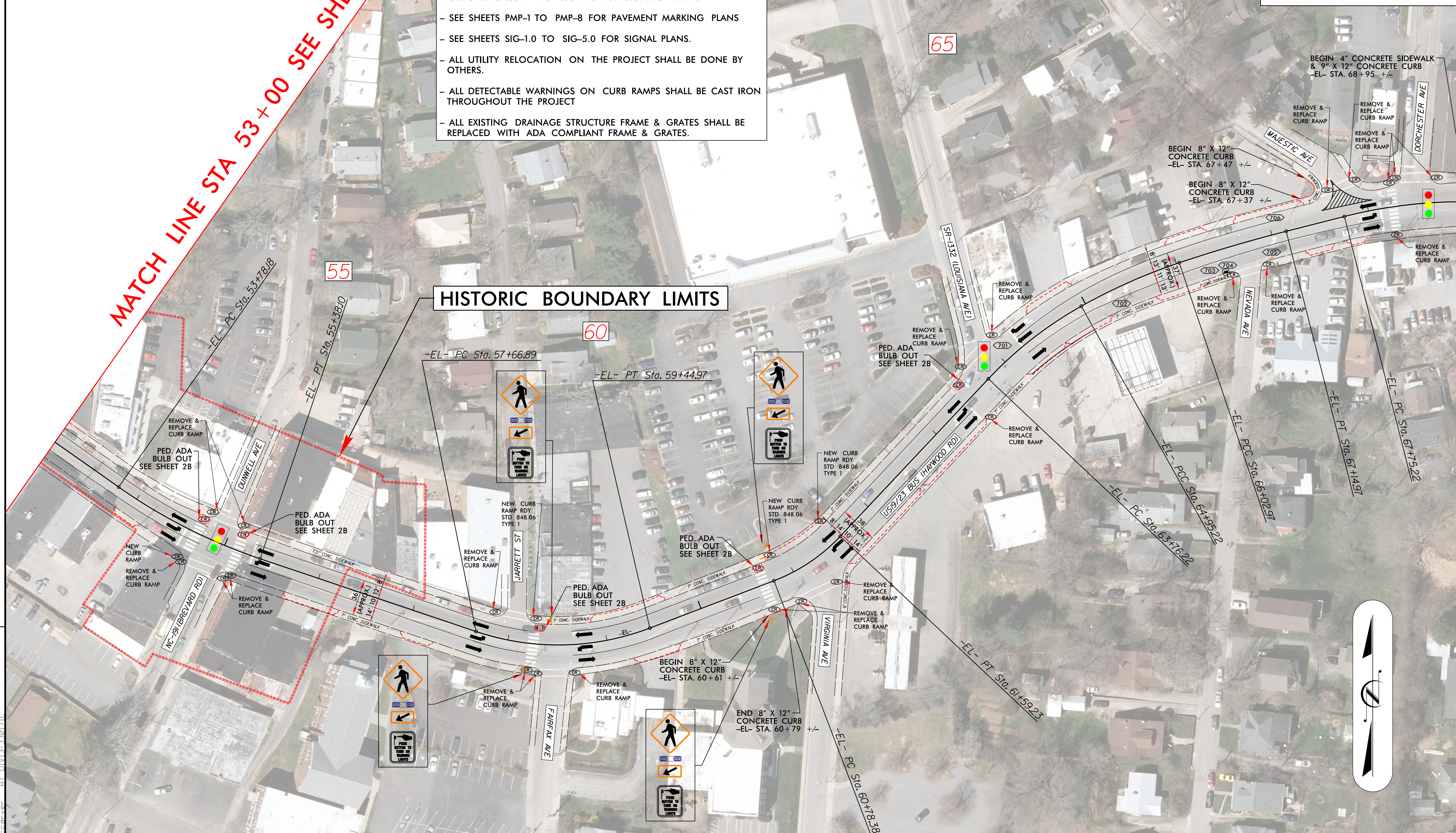
- NO FIELD SURVEY WAS PERFORMED ON THE PROJECT. ALL DIMENSIONS ARE APPROXIMATE
- SEE SHEET 2B-1 TO 2B-3 FOR ADA BULBOUT DETAILS.
- SEE SHEETS SIGN-1 TO SIGN-10 FOR SIGNING PLANS.
- SEE SHEETS PMP-1 TO PMP-8 FOR PAVEMENT MARKING PLANS
- SEE SHEETS SIG-1.0 TO SIG-5.0 FOR SIGNAL PLANS.
- ALL UTILITY RELOCATION ON THE PROJECT SHALL BE DONE BY OTHERS.
- ALL DETECTABLE WARNINGS ON CURB RAMPS SHALL BE CAST IRON THROUGHOUT THE PROJECT
- ALL EXISTING DRAINAGE STRUCTURE FRAME & GRATES SHALL BE REPLACED WITH ADA COMPLIANT FRAME & GRATES.

PROPOSED 4" CONC. SIDEWALK

MATCH LINE STA 53+00 SEE SHEET 6

MATCH LINE STA 69+00 SEE SHEET 8

HISTORIC BOUNDARY LIMITS



REVISIONS

8/17/24
 SR-3548 Haywood Road, Haywood Rd, DDC, psh7.dgn
 03-SEP-2024 09:54
 S:\000\Projects\SR-3548 Haywood Road\Roadway\Proc\Haywood_Rd_DDC_psh7.dgn
 11/13/2024 11:13:33 AM
 WCCarver

