

-EL-							
PI Sta 54+58.70	PI Sta 58+59.63	PI Sta 61+9.51	PI Sta 64+36.18	PI Sta 65+49.25	PI Sta 66+58.99	PI Sta 68+93.85	
$\Delta = 16^{\circ} 30' 48.9" (LT)$	$\Delta = 39^{\circ} 28' 49.7" (LT)$	$\Delta = 25^{\circ} 52' 51.5" (LT)$	$\Delta = 17^{\circ} 28' 57.2" (RT)$	$\Delta = 10^{\circ} 44' 11.5" (RT)$	$\Delta = 4^{\circ} 16' 41.1" (RT)$	$\Delta = 27^{\circ} 39' 37.5" (RT)$	
D = 10' 19' 34.3"	D = 22' 10' 10.9"	D = 32' 00' 53.0"	D = 14' 41' 28.4"	D = 9' 57' 52.1"	D = 3' 49' 11.0"	D = 1' 53' 26.4"	
L = 159.92'	L = 178.08'	L = 80.84'	L = 119.00'	L = 107.75'	L = 112.00'	L = 232.62'	
T = 80.52'	T = 92.74'	T = 41.12'	T = 59.97'	T = 54.03'	T = 56.03'	T = 118.62'	
R = 554.86'	R = 258.44'	R = 178.97'	R = 390.00'	R = 575.00'	R = 1,500.00'	R = 481.86'	

GENERAL NOTES:

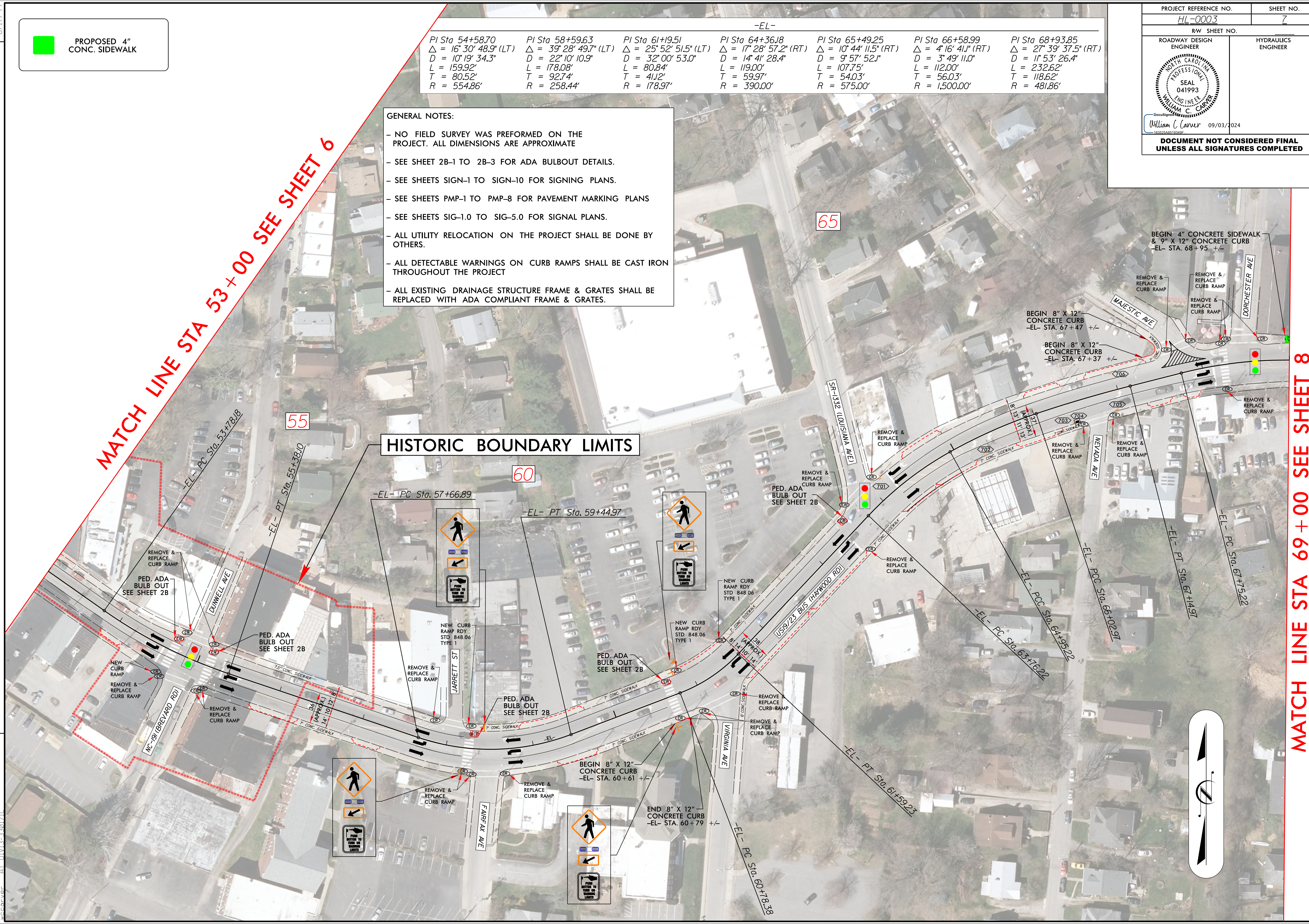
- NO FIELD SURVEY WAS PERFORMED ON THE PROJECT. ALL DIMENSIONS ARE APPROXIMATE
- SEE SHEET 2B-1 TO 2B-3 FOR ADA BULBOUT DETAILS.
- SEE SHEETS SIGN-1 TO SIGN-10 FOR SIGNING PLANS.
- SEE SHEETS PMP-1 TO PMP-8 FOR PAVEMENT MARKING PLANS
- SEE SHEETS SIG-1.0 TO SIG-5.0 FOR SIGNAL PLANS.
- ALL UTILITY RELOCATION ON THE PROJECT SHALL BE DONE BY OTHERS.
- ALL DETECTABLE WARNINGS ON CURB RAMPS SHALL BE CAST IRON THROUGHOUT THE PROJECT
- ALL EXISTING DRAINAGE STRUCTURE FRAME & GRATES SHALL BE REPLACED WITH ADA COMPLIANT FRAME & GRATES.

PROPOSED 4" CONC. SIDEWALK

MATCH LINE STA 53+00 SEE SHEET 6

MATCH LINE STA 69+00 SEE SHEET 8

HISTORIC BOUNDARY LIMITS



REVISIONS

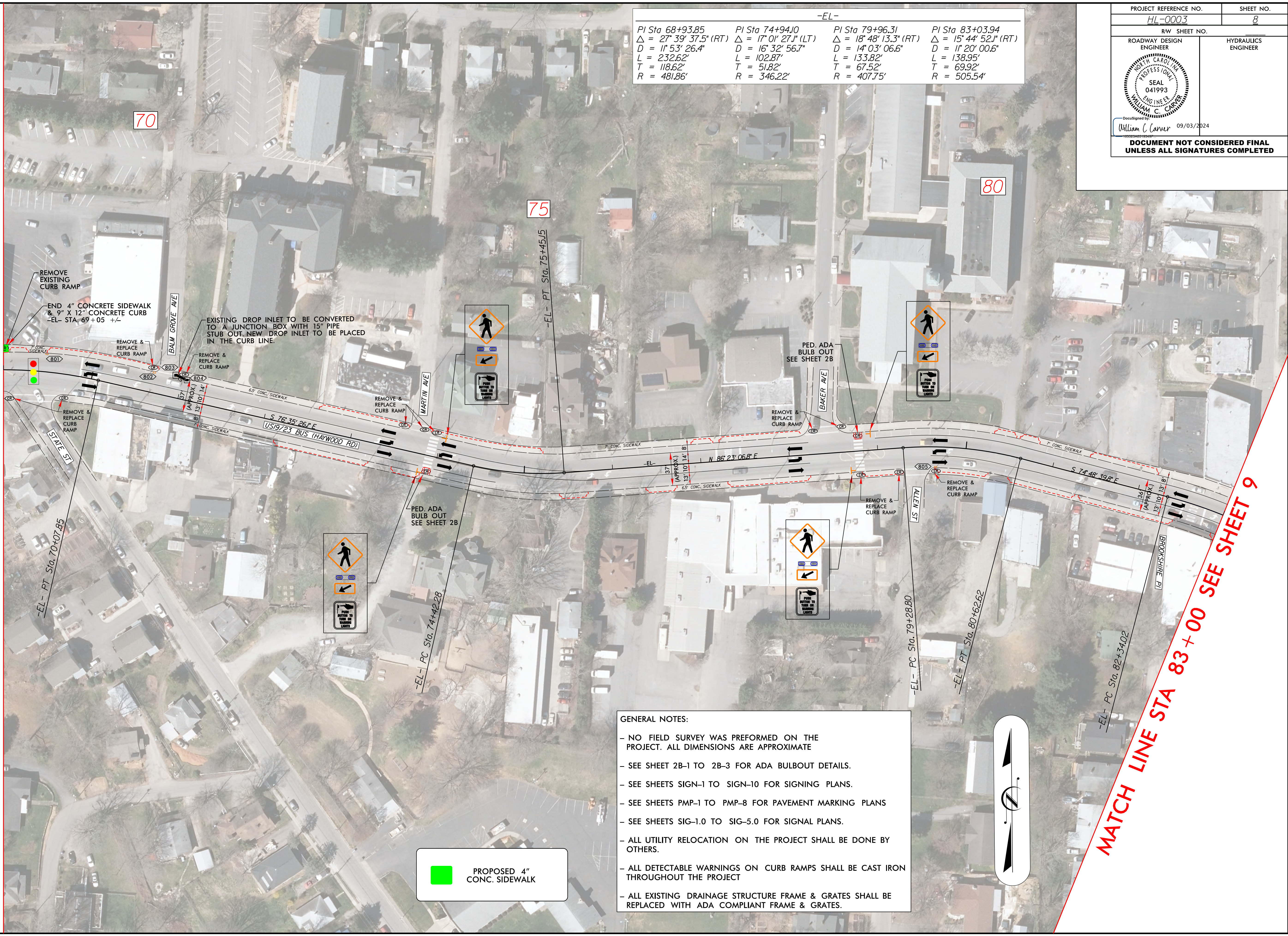
8/17/99
 SR-3548 Haywood Road, Haywood Rd, DDC, psh7.dgn
 03-SEP-2024 09:54
 S:\000\Projects\SR-3548 Haywood Road\Roadway\Proc\Haywood_Rd_DDC_psh7.dgn
 11/13/2024 11:13:33 AM
 WCC



-EL-			
PI Sta 68+93.85	PI Sta 74+94.10	PI Sta 79+96.31	PI Sta 83+03.94
$\Delta = 27' 39" 37.5" (RT)$	$\Delta = 17' 01" 27.1" (LT)$	$\Delta = 18' 48" 13.3" (RT)$	$\Delta = 15' 44" 52.1" (RT)$
$D = 11' 53" 26.4"$	$D = 16' 32" 56.7"$	$D = 14' 03" 06.6"$	$D = 11' 20" 00.6"$
$L = 232.62'$	$L = 102.87'$	$L = 133.82'$	$L = 138.95'$
$T = 118.62'$	$T = 51.82'$	$T = 67.52'$	$T = 69.92'$
$R = 481.86'$	$R = 346.22'$	$R = 407.75'$	$R = 505.54'$

MATCH LINE STA 69+00 SEE SHEET 7

MATCH LINE STA 83+00 SEE SHEET 9



GENERAL NOTES:

- NO FIELD SURVEY WAS PERFORMED ON THE PROJECT. ALL DIMENSIONS ARE APPROXIMATE
- SEE SHEET 2B-1 TO 2B-3 FOR ADA BULBOUT DETAILS.
- SEE SHEETS SIGN-1 TO SIGN-10 FOR SIGNING PLANS.
- SEE SHEETS PMP-1 TO PMP-8 FOR PAVEMENT MARKING PLANS
- SEE SHEETS SIG-1.0 TO SIG-5.0 FOR SIGNAL PLANS.
- ALL UTILITY RELOCATION ON THE PROJECT SHALL BE DONE BY OTHERS.
- ALL DETECTABLE WARNINGS ON CURB RAMP SHALL BE CAST IRON THROUGHOUT THE PROJECT
- ALL EXISTING DRAINAGE STRUCTURE FRAME & GRATES SHALL BE REPLACED WITH ADA COMPLIANT FRAME & GRATES.

PROPOSED 4" CONC. SIDEWALK

REVISIONS

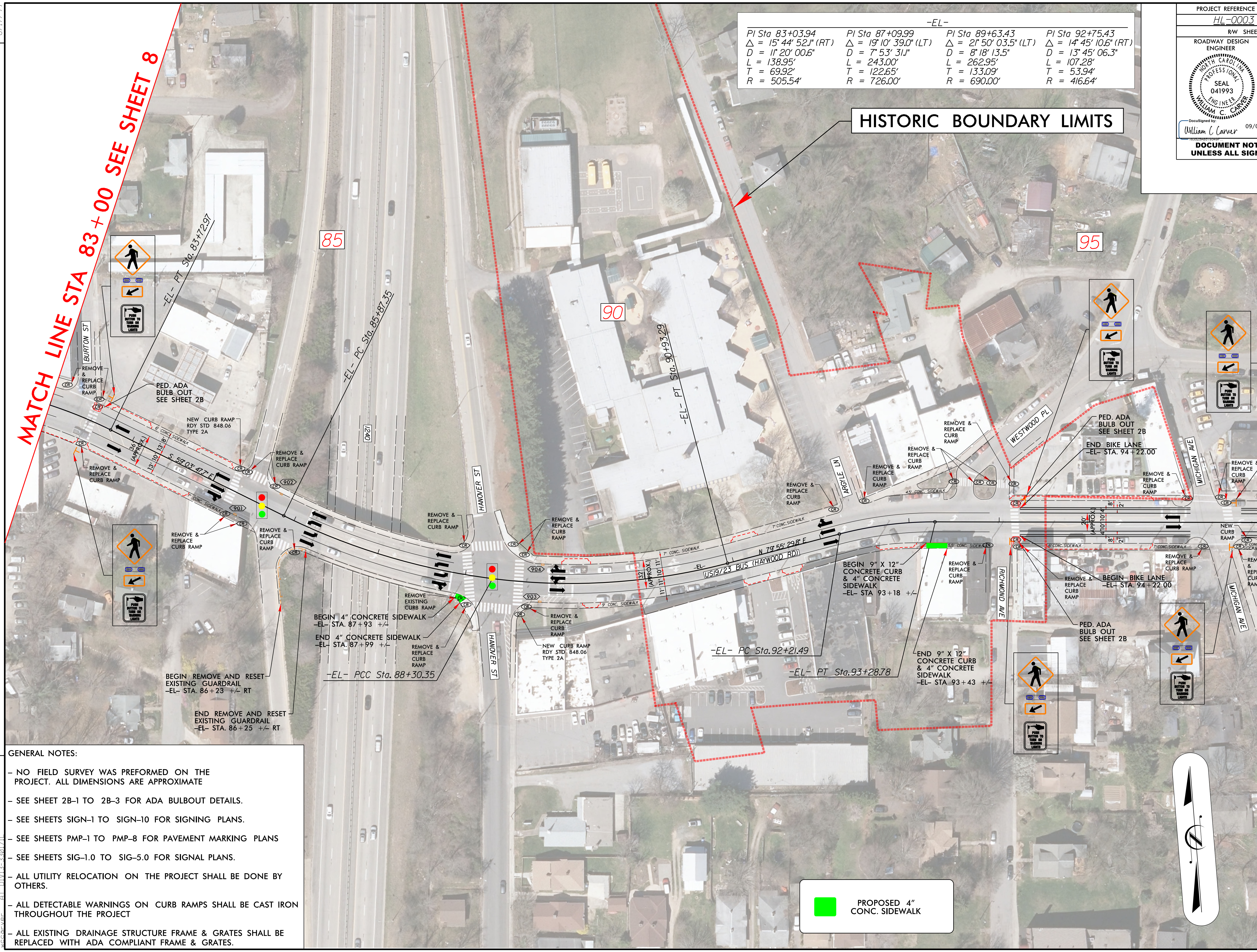
8/17/24
 SR 3548 Haywood Road, Haywood Rd, DDC, psh8.dgn
 9/3/24 11:13:30 AM
 WCC/AVR

-EL-			
PI Sta 83+03.94	PI Sta 87+09.99	PI Sta 89+63.43	PI Sta 92+75.43
$\Delta = 15^{\circ} 44' 52.1''$ (RT)	$\Delta = 19^{\circ} 10' 39.0''$ (LT)	$\Delta = 2^{\circ} 50' 03.5''$ (LT)	$\Delta = 14^{\circ} 45' 10.6''$ (RT)
D = 11' 20" 00.6"	D = 7' 53" 31.1"	D = 8' 18" 13.5"	D = 13' 45" 06.3"
L = 138.95'	L = 243.00'	L = 262.95'	L = 107.28'
T = 69.92'	T = 122.65'	T = 133.09'	T = 53.94'
R = 505.54'	R = 726.00'	R = 690.00'	R = 416.64'

HISTORIC BOUNDARY LIMITS

MATCH LINE STA 83+00 SEE SHEET 8

MATCH LINE STA 97+00 SEE SHEET 10



- GENERAL NOTES:**
- NO FIELD SURVEY WAS PERFORMED ON THE PROJECT. ALL DIMENSIONS ARE APPROXIMATE
 - SEE SHEET 2B-1 TO 2B-3 FOR ADA BULBOUT DETAILS.
 - SEE SHEETS SIGN-1 TO SIGN-10 FOR SIGNING PLANS.
 - SEE SHEETS PMP-1 TO PMP-8 FOR PAVEMENT MARKING PLANS
 - SEE SHEETS SIG-1.0 TO SIG-5.0 FOR SIGNAL PLANS.
 - ALL UTILITY RELOCATION ON THE PROJECT SHALL BE DONE BY OTHERS.
 - ALL DETECTABLE WARNINGS ON CURB RAMPS SHALL BE CAST IRON THROUGHOUT THE PROJECT
 - ALL EXISTING DRAINAGE STRUCTURE FRAME & GRATES SHALL BE REPLACED WITH ADA COMPLIANT FRAME & GRATES.

PROPOSED 4" CONC. SIDEWALK



REVISIONS

8/17/99
 9/25/2024 10:06
 S:\06\Projects\13-3307\13-3307\SR_3548_Haywood_Road\Roadway\Proc\Haywood_Rd_DDC_psh9.dgn

8/17/99
 03-SEP-2024 10:23
 S:\06\Projects\SR 3548 Haywood Road\Roadway\Proc\Haywood_Rd.DOC_psh10.dgn
 William C. Carver
 11/13/2024

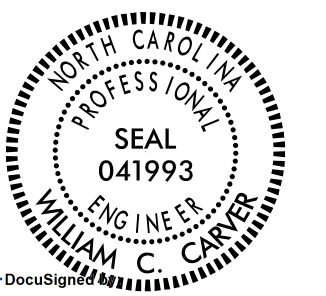
REVISIONS

MATCH LINE STA 97+00 SEE SHEET 9

GENERAL NOTES:

- NO FIELD SURVEY WAS PERFORMED ON THE PROJECT. ALL DIMENSIONS ARE APPROXIMATE
- SEE SHEET 2B-1 TO 2B-3 FOR ADA BULBOUT DETAILS.
- SEE SHEETS SIGN-1 TO SIGN-10 FOR SIGNING PLANS.
- SEE SHEETS PMP-1 TO PMP-8 FOR PAVEMENT MARKING PLANS
- SEE SHEETS SIG-1.0 TO SIG-5.0 FOR SIGNAL PLANS.
- ALL UTILITY RELOCATION ON THE PROJECT SHALL BE DONE BY OTHERS.
- ALL DETECTABLE WARNINGS ON CURB RAMPS SHALL BE CAST IRON THROUGHOUT THE PROJECT
- ALL EXISTING DRAINAGE STRUCTURE FRAME & GRATES SHALL BE REPLACED WITH ADA COMPLIANT FRAME & GRATES.

-EL-
 PI Sta 107+04.77
 $\Delta = 1' 15" 38.3" (RT)$
 $D = 0' 22" 55.1"$
 $L = 330.04'$
 $T = 165.02'$
 $R = 15,000.00'$

PROJECT REFERENCE NO. HL-0003	SHEET NO. 10
RW SHEET NO.	
ROADWAY DESIGN ENGINEER	HYDRAULICS ENGINEER
 William C. Carver 09/03/2024	
DOCUMENT NOT CONSIDERED FINAL UNLESS ALL SIGNATURES COMPLETED	

