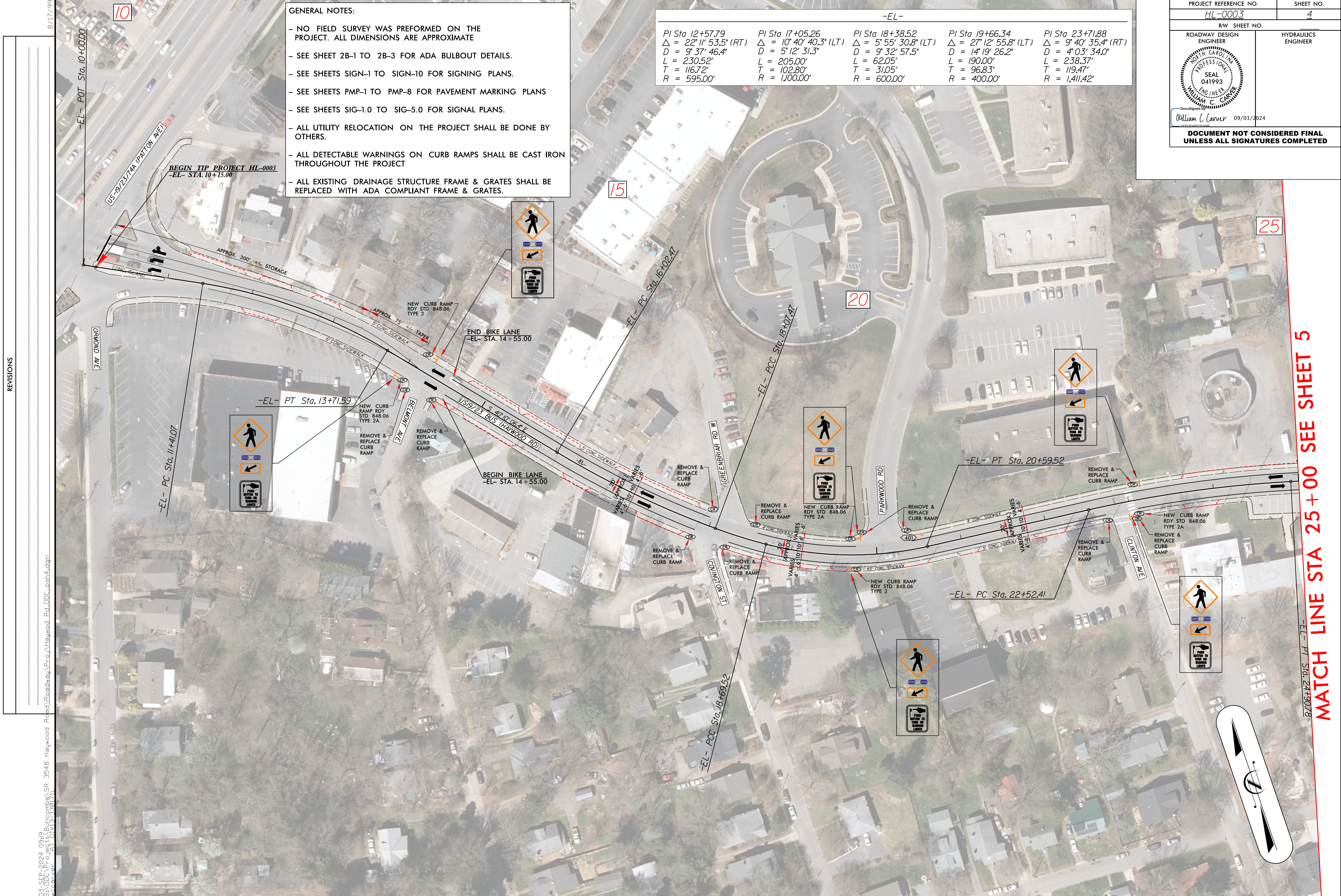


**GENERAL NOTES:**

- NO FIELD SURVEY WAS PERFORMED ON THE PROJECT. ALL DIMENSIONS ARE APPROXIMATE
- SEE SHEET 2B-1 TO 2B-3 FOR ADA BULBOUT DETAILS.
- SEE SHEETS SIGN-1 TO SIGN-10 FOR SIGNING PLANS.
- SEE SHEETS PMP-1 TO PMP-8 FOR PAVEMENT MARKING PLANS
- SEE SHEETS SIG-1.0 TO SIG-5.0 FOR SIGNAL PLANS.
- ALL UTILITY RELOCATION ON THE PROJECT SHALL BE DONE BY OTHERS.
- ALL DETECTABLE WARNINGS ON CURB RAMPS SHALL BE CAST IRON THROUGHOUT THE PROJECT
- ALL EXISTING DRAINAGE STRUCTURE FRAME & GRATES SHALL BE REPLACED WITH ADA COMPLIANT FRAME & GRATES.

-EL-				
PI Sta 12+57.79 Δ = 22° 11' 53.5" (RT) D = 9' 37' 46.4" L = 230.52' T = 116.72' R = 595.00'	PI Sta 17+05.26 Δ = 10° 40' 40.3" (LT) D = 5' 12' 31.3" L = 205.00' T = 102.80' R = 1,000.00'	PI Sta 18+38.52 Δ = 5' 55' 30.8" (LT) D = 9' 32' 57.5" L = 62.05' T = 31.05' R = 600.00'	PI Sta 19+66.34 Δ = 27° 12' 55.8" (LT) D = 14' 19' 26.2" L = 190.00' T = 96.83' R = 400.00'	PI Sta 23+71.88 Δ = 9° 40' 35.4" (RT) D = 4' 03' 34.0" L = 238.37' T = 119.47' R = 1,411.42'



MATCH LINE STA 25 + 00 SEE SHEET 5

REVISIONS

8/17/99  
 03-SEP-2024 09:48  
 S:\06\Projects\SR 3548 Haywood Road\Roadway\Proc\Haywood\_Rd.DOC\_psh4.dgn  
 William C. Carver