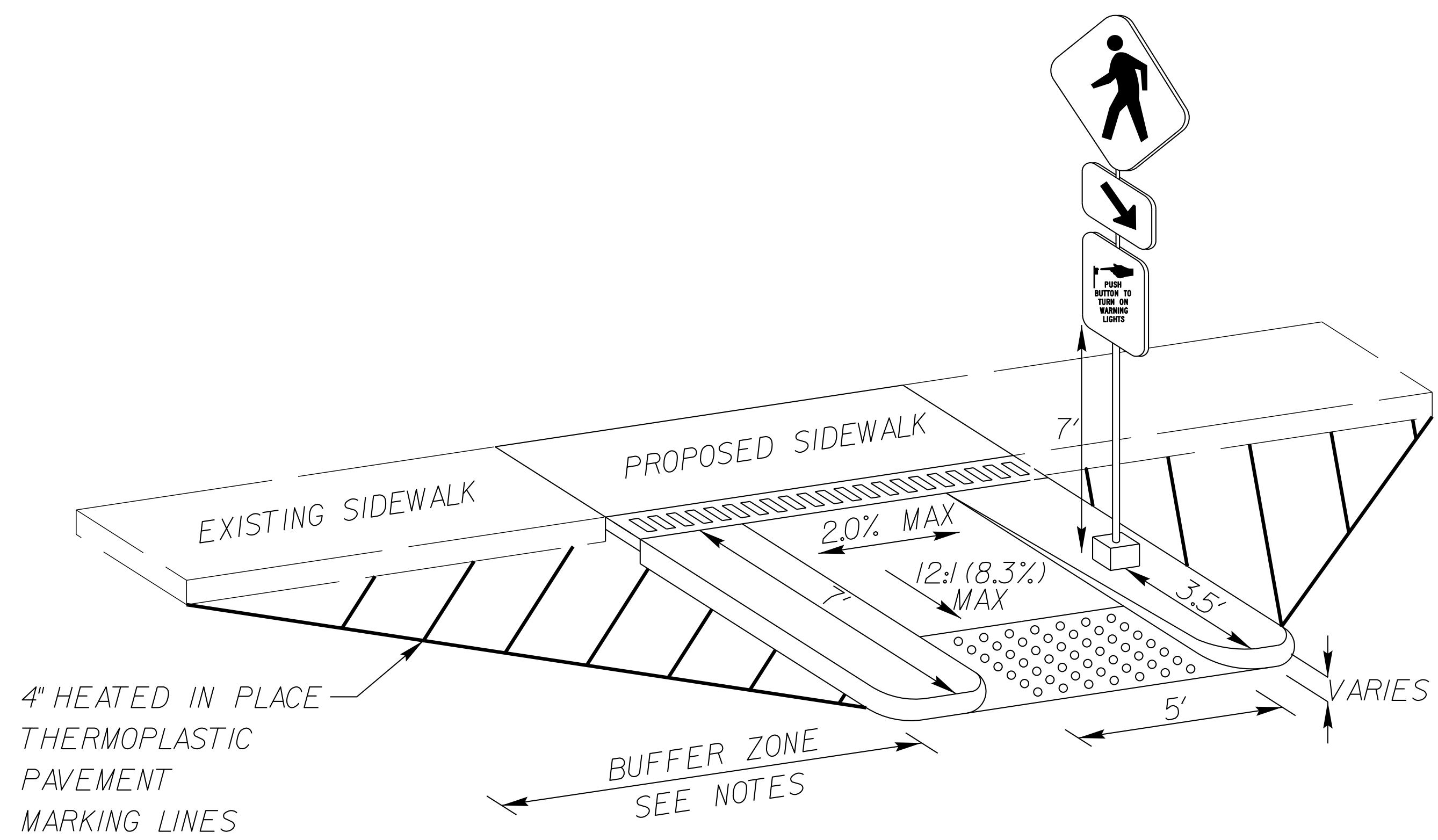
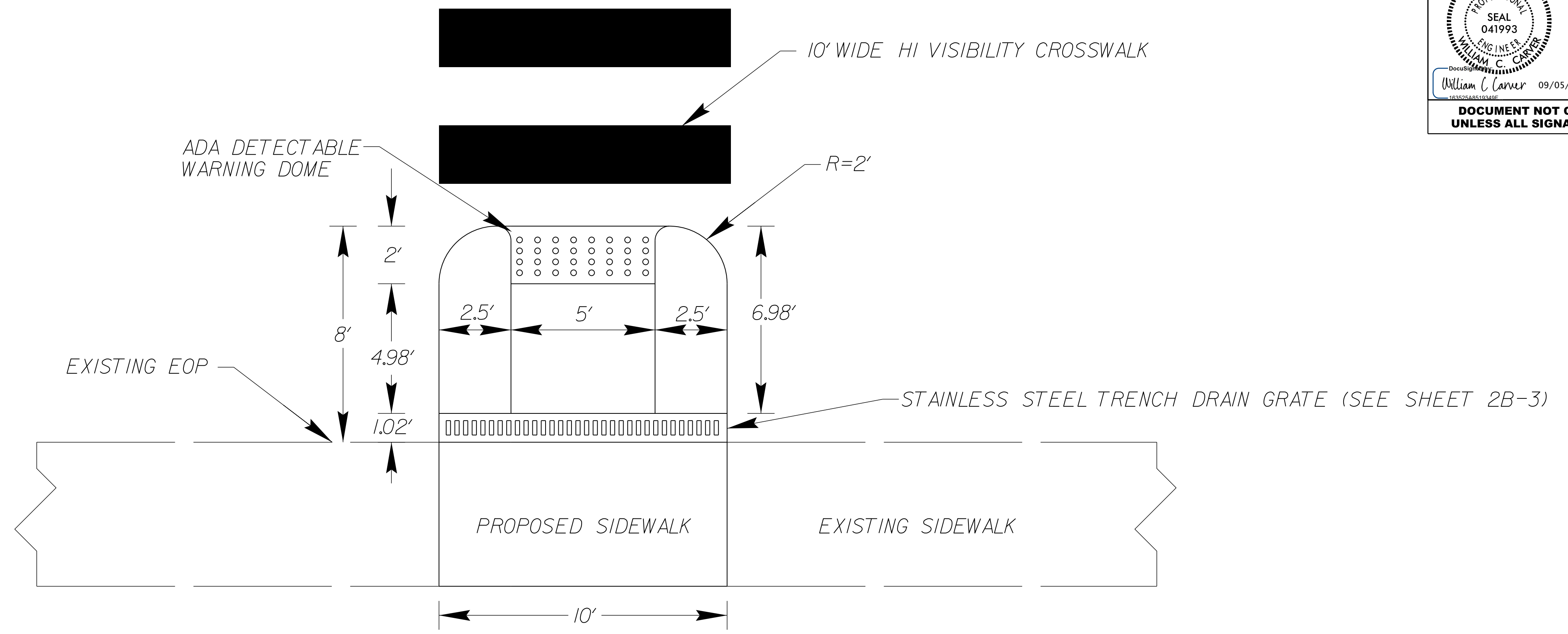


6/2/2019
 05-SEP-2024 15:08
 C:\Users\paul\OneDrive\Desktop\SR_3548_Haywood_Road\Roadway\Proj\Haywood_Rd.DDC_Bulbout_Detail.dgn
 USER:ME

PROJECT REFERENCE NO. <i>HL-0003</i>	SHEET NO. <i>2B-1</i>
ROADWAY DESIGN ENGINEER	PAVEMENT DESIGN ENGINEER
William C. Carver 09/05/2024 DOCUMENT NOT CONSIDERED FINAL UNLESS ALL SIGNATURES COMPLETED	

PEDESTRIAN BULBOUT DETAIL



- NOTES:**
- USE CAST IRON DETECTABLE WARNINGS FOUND ON THE NCDOT APPROVED PRODUCTS LIST WITH A NATURAL FINISH TO ENCOURAGE A WEATHERED APPEARANCE LOOK AT LOCATIONS AS SHOWN IN THE PLANS. DETECTABLE WARNINGS SHALL BE APPROVED FOR USE BY THE ENGINEER PRIOR TO INSTALLATION.
 - BUFFER ZONE PAVEMENT MARKINGS SHALL BE A MINIMUM OF 20 FT IN LENGTH ON BOTH SIDES ON THE PEDESTRIAN BULB OUT AT MID BLOCK CROSSINGS.
 - BUFFER ZONE PAVEMENT MARKINGS SHALL BE A MINIMUM OF 30 FT IN LENGTH BETWEEN THE PEDESTRIAN BULB OUT AND SIGNALIZED INTERSECTIONS.