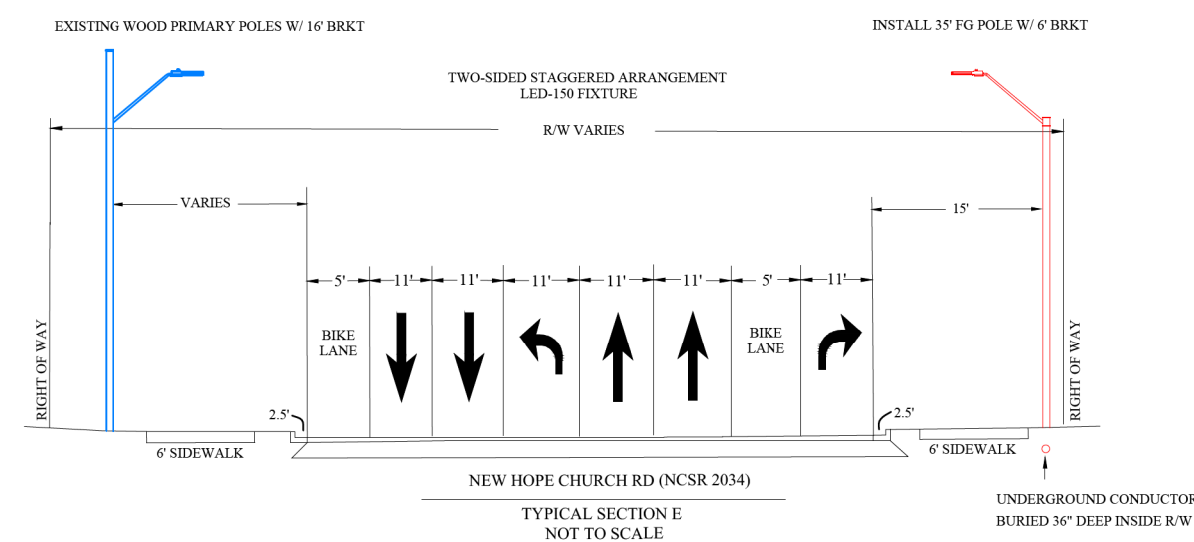
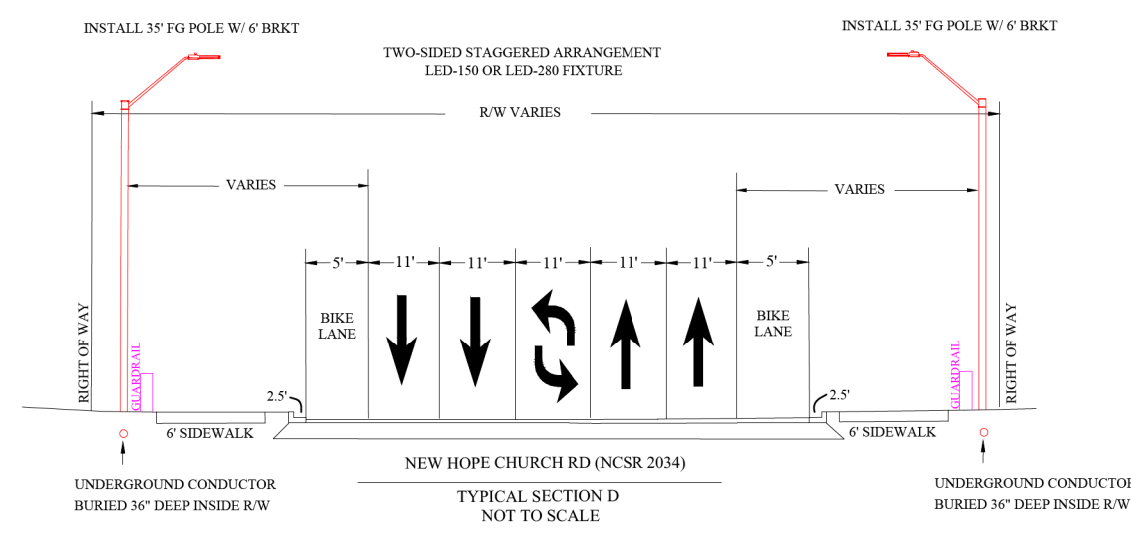
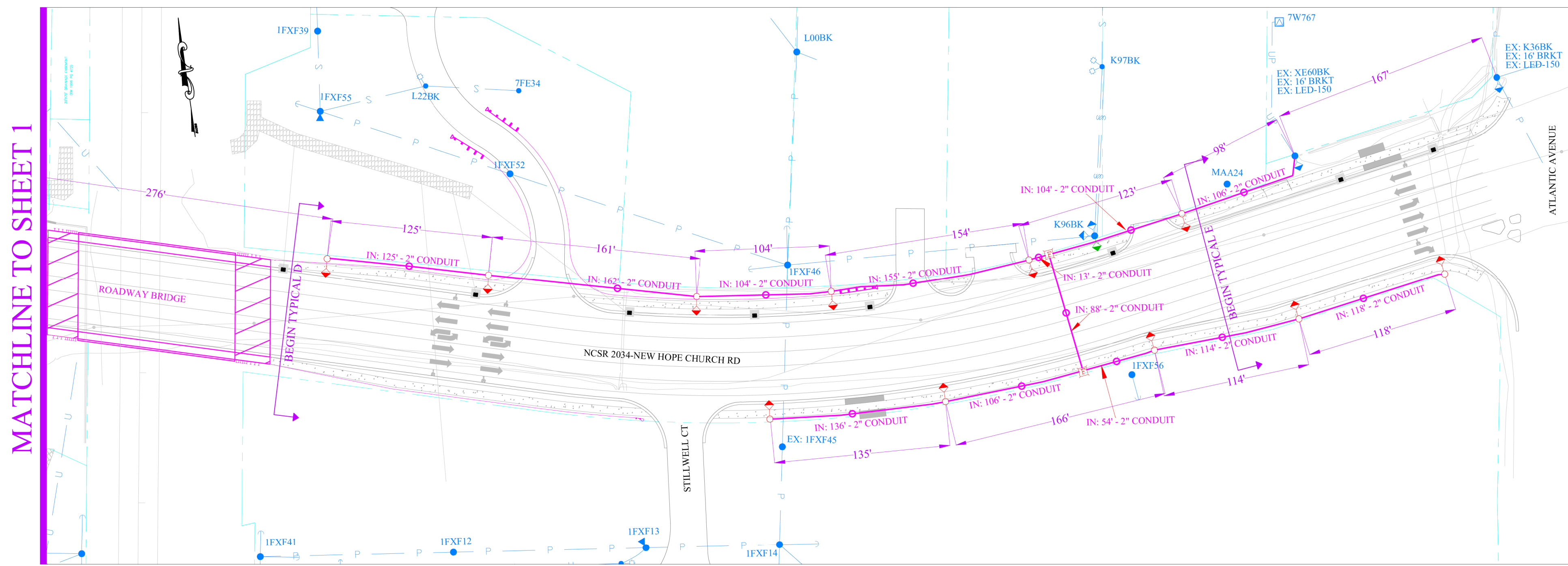


STREET LIGHTING CONDUIT LOCATION



PROPOSED	EXISTING	REMOVE	INSTALL	LEGEND
				LED LUMINAIRE
				2\"/>
				FIBERGLASS/STEEL LIGHTING POLE
				WOOD POLE
				FOREIGN POLE
				TRANSFORMER (POLE MOUNTED)
				STREET LIGHT CIRCUIT UNDERGROUND
				STREET LIGHT CIRCUIT OVERHEAD
				ON PRIMARY CIRCUIT
				R/W/PROPERTY LINES
				SECONDARY PERESTAL
				TRANSFORMER (PAD MOUNTED)

7: PERSONAL ACCOUNTABILITY
7: ACTIVE CAREER
7: HAZARD RECOGNITION

Safety Reminders / Adverse Conditions

WZS: REMEMBER "YOUR CIRCLE OF SAFETY"
WZS: SET PROPER WORK ZONE NEEDED
WZS: SET PROPER SIGNS, CONES, AND BARRICADES
WZS: REMEMBER WALK AROUNDS AND PRETRIP
WZS:

REMEMBER: Work zone area conditions may have changed for this job! Everyone is responsible for verifying the above safety information is correct prior to any work being performed each day.

LIGHTING DESIGN TOLERANCE

The calculated footcandle light levels in this lighting design are predicted values and are based on specific information that has been supplied to Duke Energy. Any inaccuracies in the supplied information, differences in luminaire installation, lighted area geometry including elevation differences, reflective properties of surrounding surfaces, obstructions (foliage or otherwise) in the lighted area, or lighting from sources other than listed in this design may produce different results from the predicted values. Normal tolerances of voltage, lamp output, and ballast and luminaire manufacture will also affect results.

PROPRIETARY & CONFIDENTIAL

This document together with the concepts and designs presented herein, presented as an instrument of service, is the sole property of Duke Energy, and is intended only for the specific purpose and prospective client as stated in the title block of this drawing. Any use, copying, reproduction or disclosure of the drawing, design or any information contained herein by the prospective customer or other entities, including without limitation, architects, engineers, or equipment manufacturers is hereby expressly prohibited and shall not be permitted absent prior written consent from, and payment of compensation to Duke Energy. Duke Energy disclaims any liability or responsibility for any unauthorized use of or reliance on this document.

CONDUIT ARRANGEMENT FOR NEW HOPE CHURCH RD (NCSR 2034)	
RALEIGH, NC	
Designed by	DUKE ENERGY PROGRESS LIGHTING SOLUTIONS
Reviewed by	JESSICA WEISS Scale 1" = 50'
Date	2/16/2024 Size Drawing size "D"
Description	
Drawing No.	4304 Sht. 2 OF 2

NO.	DATE	REVISION	BY

8/17/99
E:\2024\Projects\NCSR\NCSR 2034-NEW HOPE CHURCH RD\SL-Plans.dgn
1/16/2024