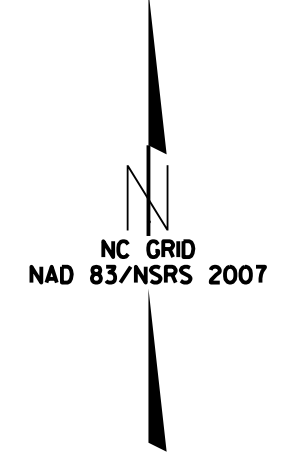


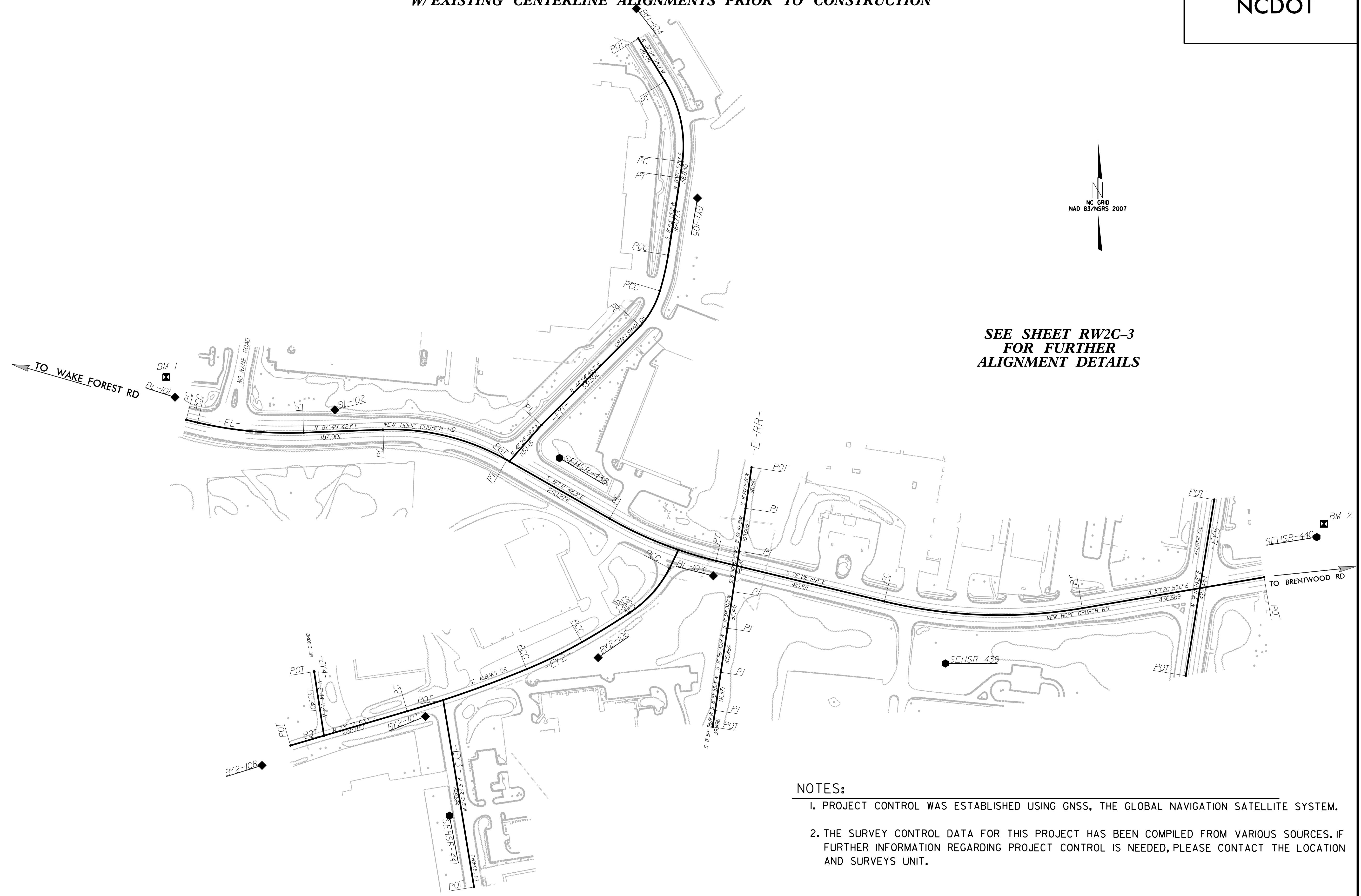
PROJECT REFERENCE NO.	SHEET NO.
P-5715	RW02C-1
Location and Surveys	
NCDOT	

SURVEY CONTROL SHEET

W/ EXISTING CENTERLINE ALIGNMENTS PRIOR TO CONSTRUCTION



**SEE SHEET RW2C-3
FOR FURTHER
ALIGNMENT DETAILS**



- NOTES:**
1. PROJECT CONTROL WAS ESTABLISHED USING GNSS, THE GLOBAL NAVIGATION SATELLITE SYSTEM.
 2. THE SURVEY CONTROL DATA FOR THIS PROJECT HAS BEEN COMPILED FROM VARIOUS SOURCES. IF FURTHER INFORMATION REGARDING PROJECT CONTROL IS NEEDED, PLEASE CONTACT THE LOCATION AND SURVEYS UNIT.

REVISIONS

12-AUG-2019 10:31
C:\Projects\15\Control\Stats\P-5715-LS-rw02c-1.dgn
bktr@ncdot.gov