

MAXTIME OVERLAP PROGRAMMING DETAIL FOR DEFAULT PHASING

Front Panel
Main Menu >Controller >Overlap >Overlap Parameters/Overlap Timings

Web Interface
Home >Controller >Overlap Configuration >Overlaps

Overlap Plan 1

Overlap	1	2
Type	FYA 4 - Section	FYA 4 - Section
Included Phases	2	1,8
Modifier Phases	1	-
Modifier Overlaps	-	-
Trail Green	0	0
Trail Yellow	0.0	0.0
Trail Red	0.0	0.0
FYA Ped Delay	0.0	7.0

← NOTICE FYA PED DELAY

MAXTIME ALTERNATE PHASING ACTIVATION DETAIL

To run alternate phasing, select a Pattern that is programmed to run Overlap Plan 2 and Detector Plan 2. A Pattern can be selected through the scheduler or manually by changing the Operational Mode.

PHASING	OVERLAP PLAN	VEH DET PLAN
ACTIVE PLAN REQUIRED TO RUN DEFAULT PHASING	1	1
ACTIVE PLAN REQUIRED TO RUN ALTERNATE PHASING	2	2

ALTERNATE PHASING CHANGE SUMMARY

THE FOLLOWING IS A SUMMARY OF WHAT TAKES PLACE WHEN OVERLAP PLAN 2 AND VEHICLE DETECTOR PLAN 2 ACTIVATE TO CALL THE "ALTERNATE PHASING":

OVERLAP PLAN 2: Modifies overlap included phases for head 11 to run protected turns only.

VEH DET PLAN 2: Disables phase 6 call on loop 1A and reduces delay time for phase 1 call on loop 1A to 0 seconds.

MAXTIME OVERLAP PROGRAMMING DETAIL FOR ALTERNATE PHASING

Front Panel
Main Menu >Controller >Overlap >Overlap Parameters/Overlap Timings

Web Interface
Home >Controller >Overlap Configuration >Overlaps

In the table view of the web interface, right click on "Overlap" in the top left corner of the table. Copy the entire contents of Overlap Plan 1. Paste Overlap Plan 1 into Overlap Plan 2. Modify Overlap Plan 2 as shown below and save changes.

Overlap Plan 2

Overlap	1	2
Type	FYA 4 - Section	FYA 4 - Section
Included Phases	-	1,8
Modifier Phases	1	-
Modifier Overlaps	-	-
Trail Green	0	0
Trail Yellow	0.0	0.0
Trail Red	0.0	0.0
FYA Ped Delay	0.0	7.0

← NOTICE INCLUDED PHASE

← NOTICE FYA PED DELAY

MAXTIME ALTERNATE PHASING PATTERN PROGRAMMING DETAIL

Front Panel
Main Menu >Controller >Coordination >Patterns

Web Interface
Home >Controller >Coordination >Patterns

Pattern Parameters

Pattern	Veh Det Plan	Overlap Plan
*	2	2

* The Pattern number(s) are to be determined by the Division Traffic Engineer.

THIS ELECTRICAL DETAIL IS FOR THE SIGNAL DESIGN: 10-1325T4
DESIGNED: August 2023
SEALED: 04/29/2024
REVISED: N/A

MAXTIME DETECTOR PROGRAMMING DETAIL FOR ALTERNATE PHASING LOOP 1A

Front Panel
Main Menu >Controller >Detector >Veh Det Plans

Web Interface
Home >Controller >Detector Configuration >Vehicle Detectors

In the table view of web interface right click on "Detector" in the top left corner of the table. Copy the entire contents of Detector Plan 1. Paste Detector Plan 1 into Detector Plan 2. Modify Detector Plan 2 as shown below and save changes.

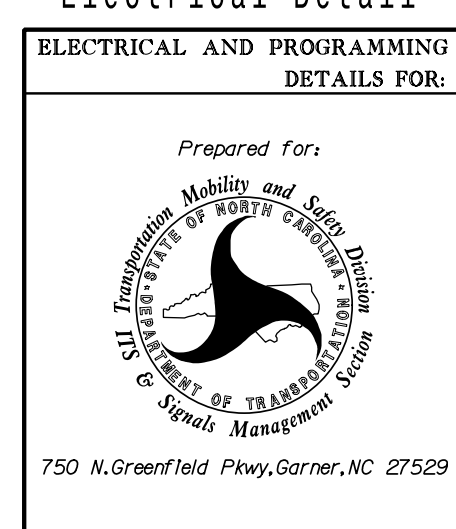
Plan 2

Detector	Call Phase	Delay
1	1	0
29	0	3

1A

Signal Upgrade - Temporary Design 4
Electrical Detail - Sheet 2 of 2

PLANS PREPARED IN THE OFFICE OF:
Kimley-Horn
NC License #F-0102
421 Fayetteville Street, Suite 600
Raleigh, NC 27601
(919) 677-2000



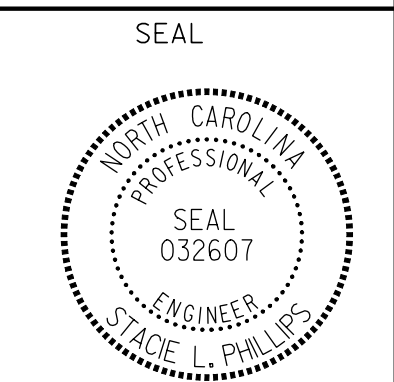
Prepared for:
SR 3448 (Pleasant Plains Road) at SR 3440 (McKee Road)

Division 10 Mecklenburg County Matthews

PLAN DATE: August 2023	REVIEWED BY: SL Phillips
PREPARED BY: SP Pennington	REVIEWED BY:

REVISIONS	INIT.	DATE

DOCUMENT NOT CONSIDERED FINAL UNLESS ALL SIGNATURES COMPLETED



DocuSigned by: *SLP* 4/29/2024
DATE
SIG. INVENTORY NO. 10-1325T4

4/29/2024 3:31:37 PM G:\P\1\1011036\026 - McKee Rd EXH1\SIGNAL MS4 - Signal Des\gms.2 10-1325T4_2023a2.dgn