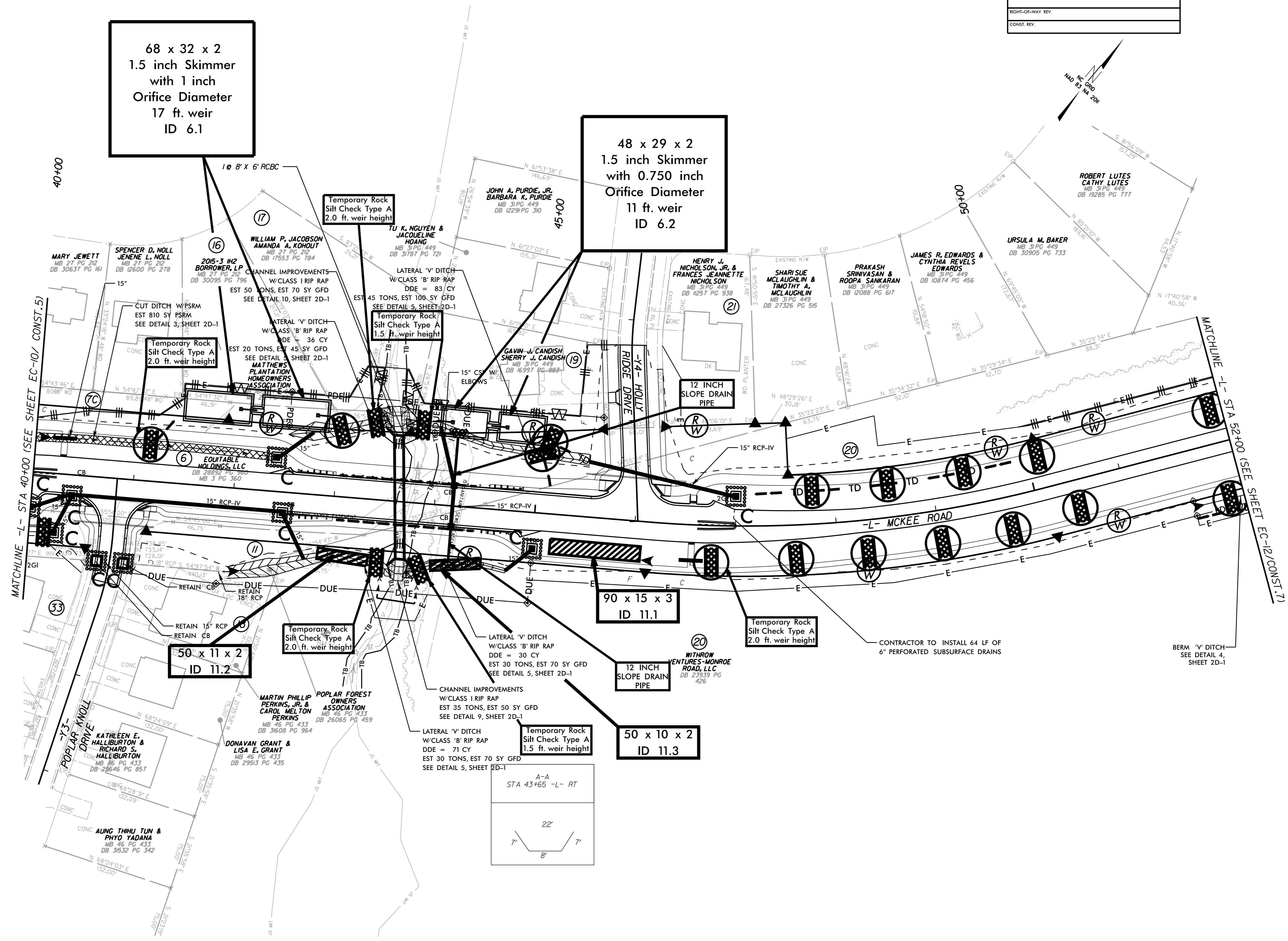


68 x 32 x 2
1.5 inch Skimmer
with 1 inch
Orifice Diameter
17 ft. weir
ID 6.1

48 x 29 x 2
1.5 inch Skimmer
with 0.750 inch
Orifice Diameter
11 ft. weir
ID 6.2



Temporary Rock
Silt Check Type A
2.0 ft. weir height

Temporary Rock
Silt Check Type A
2.0 ft. weir height

Temporary Rock
Silt Check Type A
1.5 ft. weir height

12 INCH
SLOPE DRAIN
PIPE

90 x 15 x 3
ID 11.1

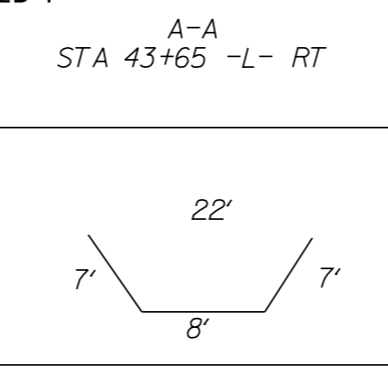
Temporary Rock
Silt Check Type A
2.0 ft. weir height

50 x 11 x 2
ID 11.2

Temporary Rock
Silt Check Type A
2.0 ft. weir height

12 INCH
SLOPE DRAIN
PIPE

50 x 10 x 2
ID 11.3



UTILIZE FABRIC INSERT INLET PROTECTIONS IN LIEU OF ROCK
INLET SEDIMENT TRAP TYPE C WHERE WATER MAY POND ON
THE ROADWAY IN AREAS WHERE LIVE TRAFFIC IS PRESENT.