

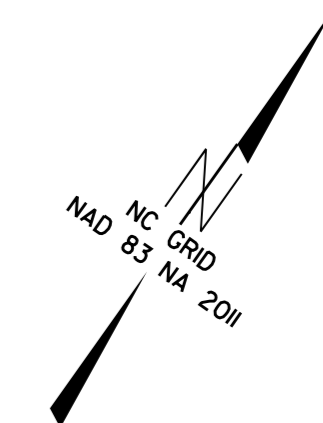
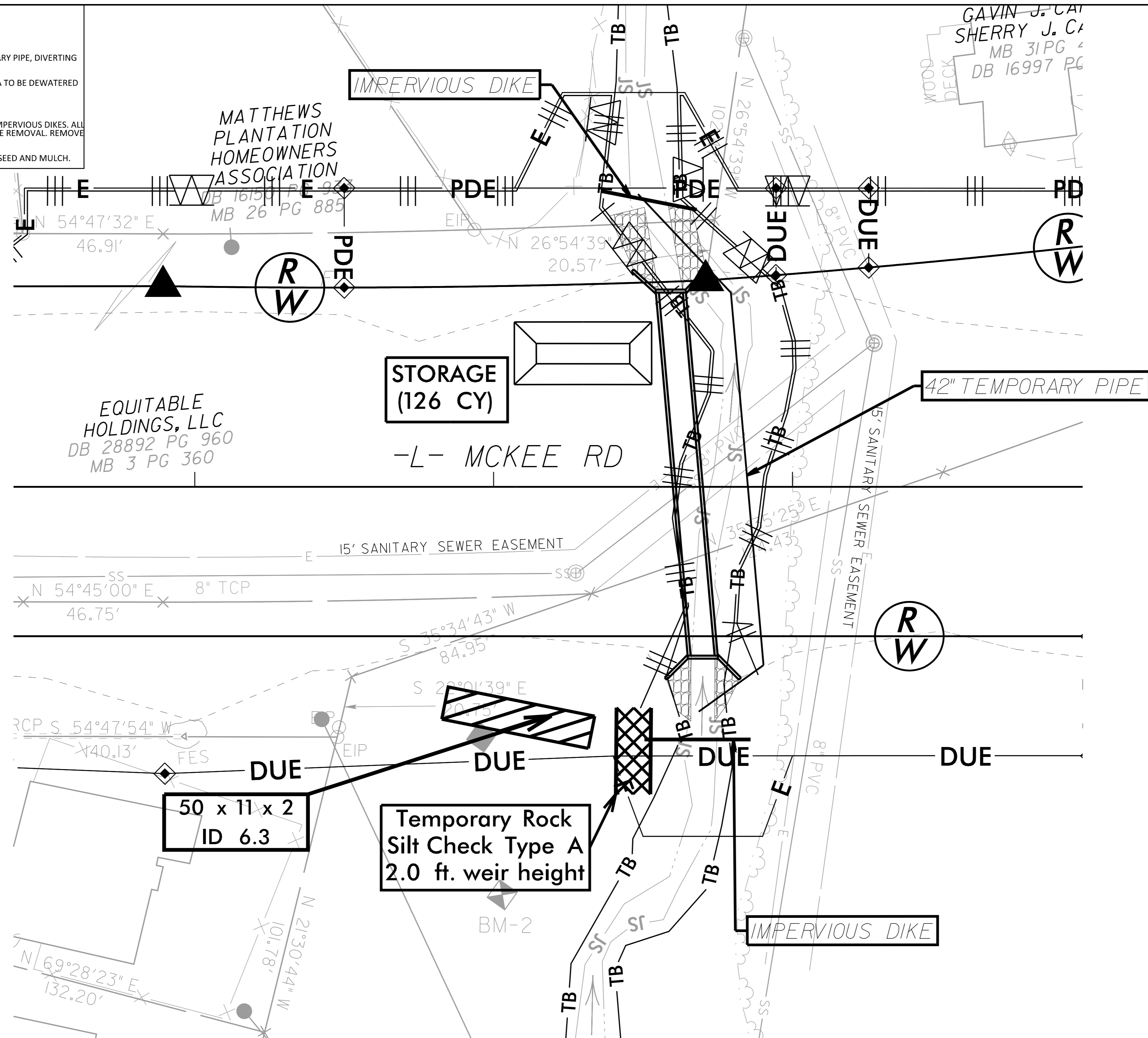
CULVERT CONSTRUCTION SEQUENCE STA. 43 + 65 -L-

STAGE I

CULVERT CONSTRUCTION SEQUENCE STAGE I

1. INSTALL STILLING BASIN.
2. CONSTRUCT UPSTREAM IMPERVIOUS DIKES AND INSTALL 42 INCH TEMPORARY PIPE, DIVERTING FLOW THROUGH THE TEMPORARY PIPE.
3. PLACE DOWNSTREAM IMPERVIOUS DIKE. DEWATER ENTRAPPED AREA. AREA TO BE DEWATERED SHALL BE EQUAL TO ONE DAY'S WORK.
4. INSTALL BOX CULVERT AND HEADWALLS IN ACCORDANCE WITH THE PLANS.
5. EXCAVATE ANY ACCUMULATED SILT AND DEWATER BEFORE REMOVAL OF IMPERVIOUS DIKES. ALL STREAM IMPROVEMENTS NEED TO BE COMPLETED PRIOR TO IMPERVIOUS DIKE REMOVAL. REMOVE IMPERVIOUS DIKES, AND TEMPORARY PIPE (DOWNSTREAM DIKES FIRST).
6. REMOVE STILLING BASIN AND BACKFILL STABILIZED DISTURBED AREA WITH SEED AND MULCH.

REVISIONS



6/3/2024 K:\CHL_PRR\01036426 - McKee Rd Ext\Environmental\Design\U-4713A_ec_psh_6A_culvert_seq.dgn