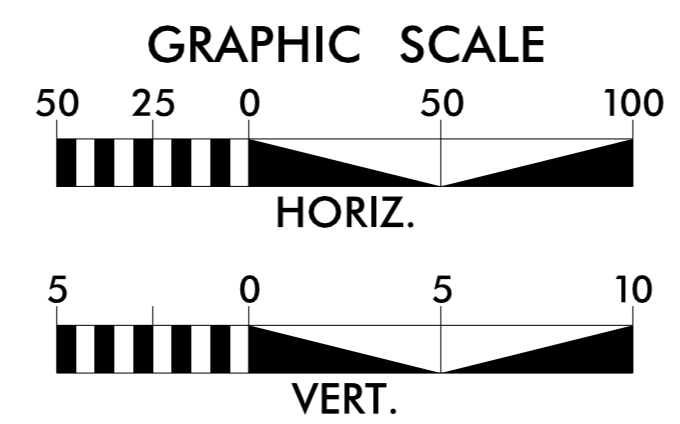


5/14/2019

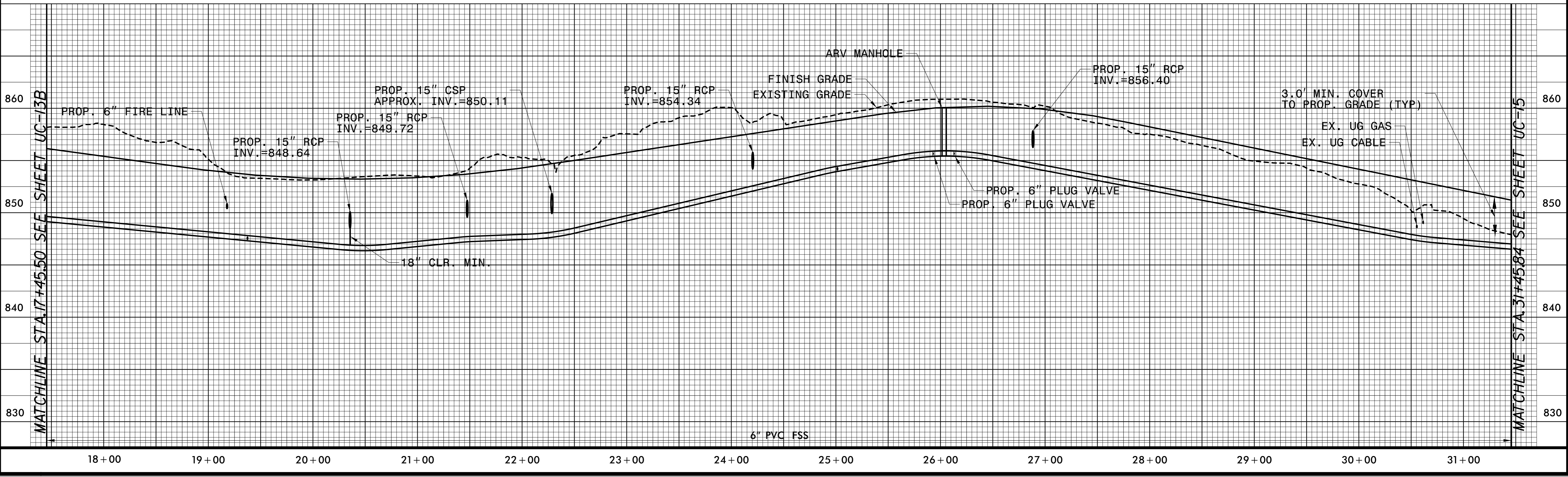
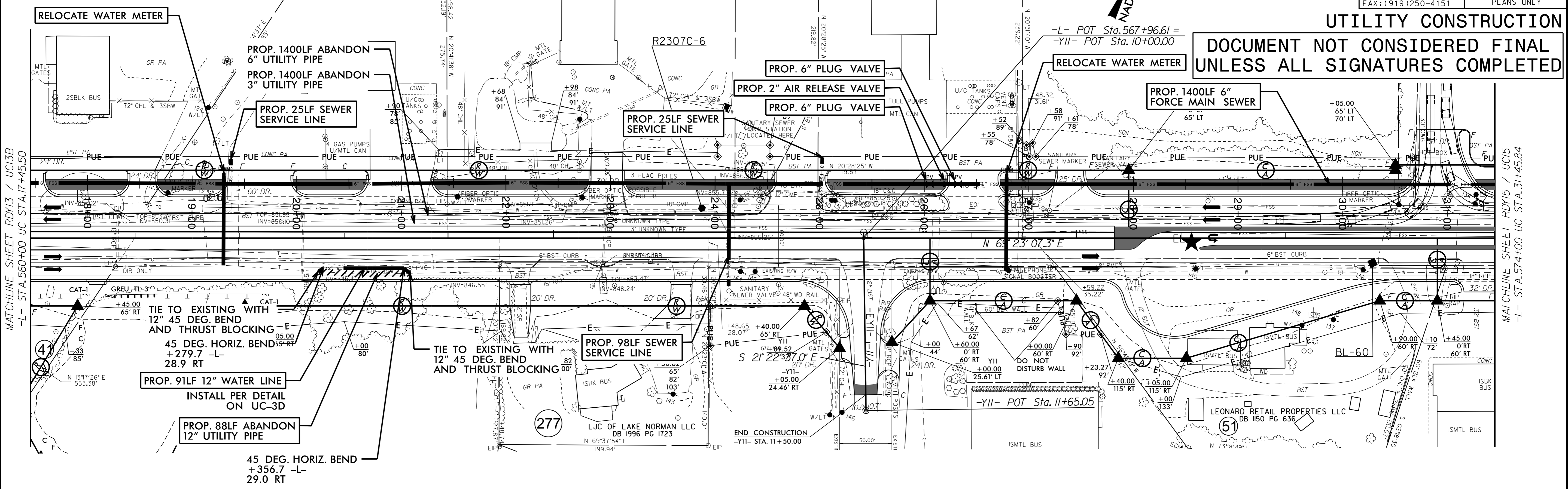
NOTE:
 THE ESTIMATED QUANTITY OF DUCTILE IRON WATER PIPE FITTINGS ON THIS PLAN SHEET IS 2000 POUNDS. THE ESTIMATED QUANTITY OF DUCTILE IRON SEWER PIPE FITTINGS ON THIS PLAN SHEET IS 400 POUNDS. THE ACTUAL QUANTITY AND TYPE OF FITTINGS WILL VARY BASED ON FIELD CONDITIONS.



PROJECT REFERENCE NO.	R-2307B / 1-5717	SHEET NO.	UC14
DESIGNED BY:	JFA		
DRAWN BY:	ACB		
CHECKED BY:	EPH		
APPROVED BY:	JJW		
REVISED:		DATE	8/21/2019
NORTH CAROLINA DEPARTMENT OF TRANSPORTATION		UTILITY CONSTRUCTION PLANS ONLY	
UTILITIES ENGINEERING SEC. PHONE: (919) 707-6690 FAX: (919) 250-4151			

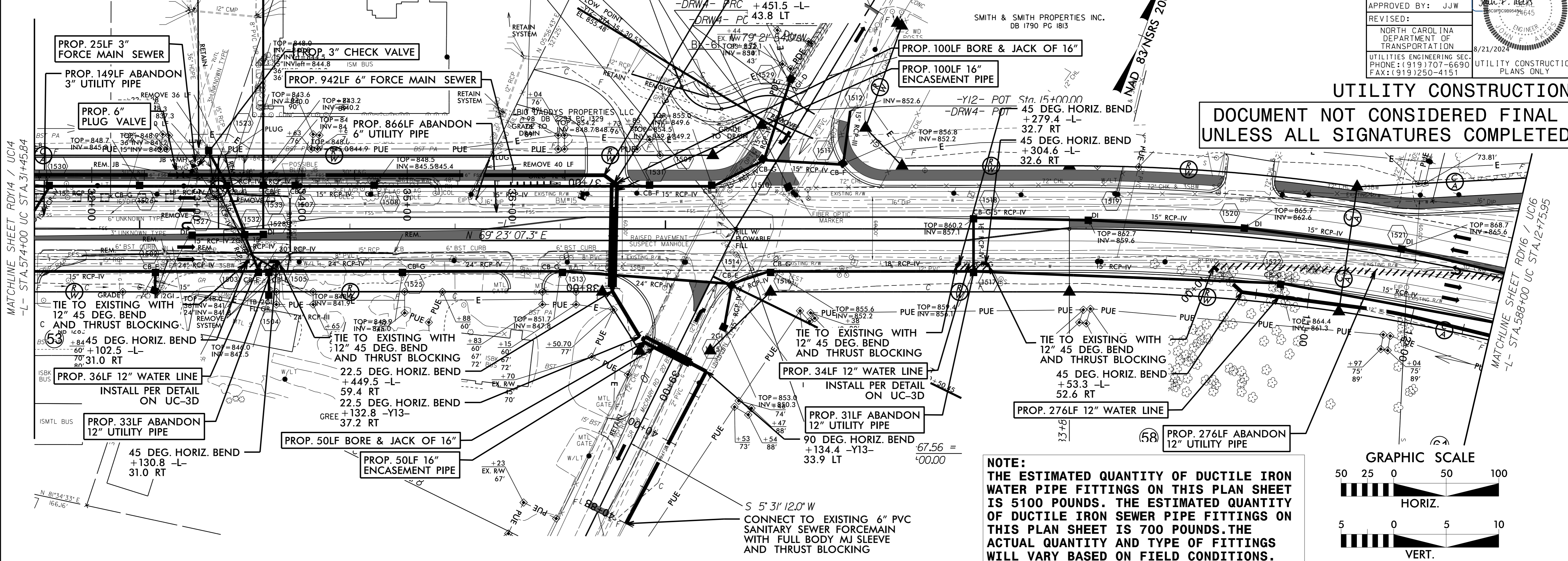
UTILITY CONSTRUCTION

DOCUMENT NOT CONSIDERED FINAL UNLESS ALL SIGNATURES COMPLETED



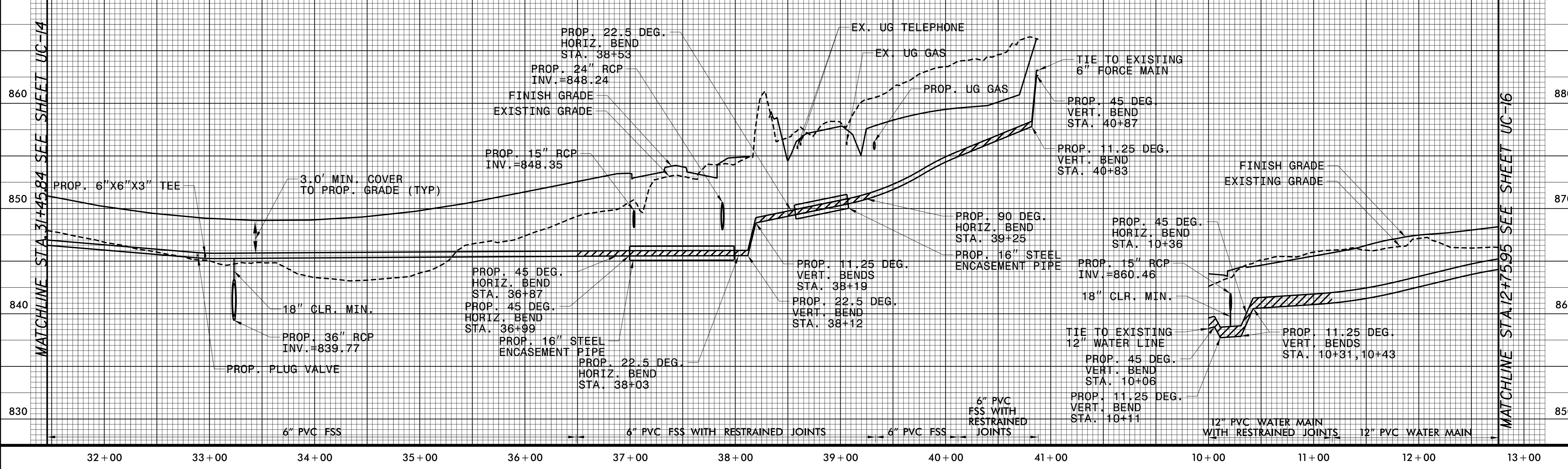
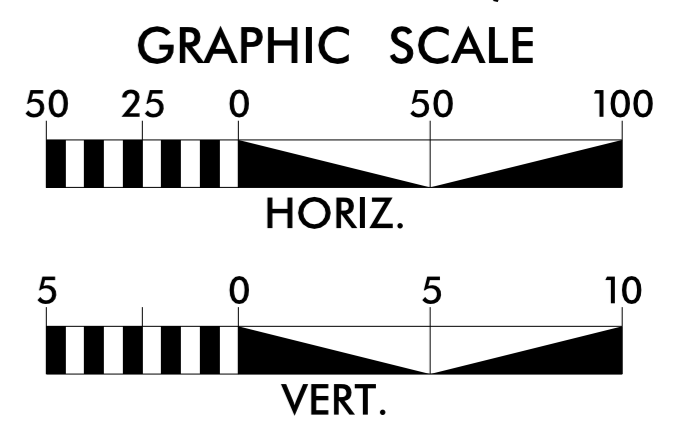
PROJECT REFERENCE NO.	R-2307B / I-5717	SHEET NO.	UC15
DESIGNED BY:	JFA		
DRAWN BY:	ACB		
CHECKED BY:	EPH		
APPROVED BY:	JJW		
REVISED:			
NORTH CAROLINA DEPARTMENT OF TRANSPORTATION		8/21/2024	
UTILITIES ENGINEERING SEC. PHONE: (919) 707-6690 FAX: (919) 250-4151		UTILITY CONSTRUCTION PLANS ONLY	

CONNECT TO EXISTING 3" PVC SANITARY SEWER FORCEMAIN WITH FULL BODY MJ SLEEVE AND THRUST BLOCKING



UTILITY CONSTRUCTION
DOCUMENT NOT CONSIDERED FINAL
UNLESS ALL SIGNATURES COMPLETED

NOTE:
 THE ESTIMATED QUANTITY OF DUCTILE IRON WATER PIPE FITTINGS ON THIS PLAN SHEET IS 5100 POUNDS. THE ESTIMATED QUANTITY OF DUCTILE IRON SEWER PIPE FITTINGS ON THIS PLAN SHEET IS 700 POUNDS. THE ACTUAL QUANTITY AND TYPE OF FITTINGS WILL VARY BASED ON FIELD CONDITIONS.



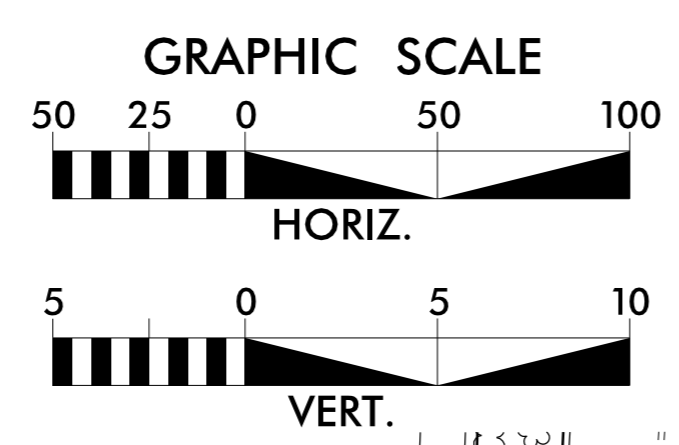
MATCHLINE STA. 31+45.84 SEE SHEET UC-14

MATCHLINE STA. 12+75.95 SEE SHEET UC-16



PROJECT REFERENCE NO. R-2307B / 1-5717	SHEET NO. UC16
DESIGNED BY: JFA	
DRAWN BY: ACB	
CHECKED BY: EPH	
APPROVED BY: JJW	
REVISED:	8/21/2017
NORTH CAROLINA DEPARTMENT OF TRANSPORTATION UTILITIES ENGINEERING SEC. PHONE: (919) 707-6690 FAX: (919) 250-4151	
UTILITY CONSTRUCTION PLANS ONLY	

NOTE:
THE ESTIMATED QUANTITY OF DUCTILE IRON WATER PIPE FITTINGS ON THIS PLAN SHEET IS 1700 POUNDS. THE ACTUAL QUANTITY AND TYPE OF FITTINGS WILL VARY BASED ON FIELD CONDITIONS.



UTILITY CONSTRUCTION
DOCUMENT NOT CONSIDERED FINAL UNLESS ALL SIGNATURES COMPLETED

