

09/20/24

STATE OF NORTH CAROLINA
DIVISION OF HIGHWAYS

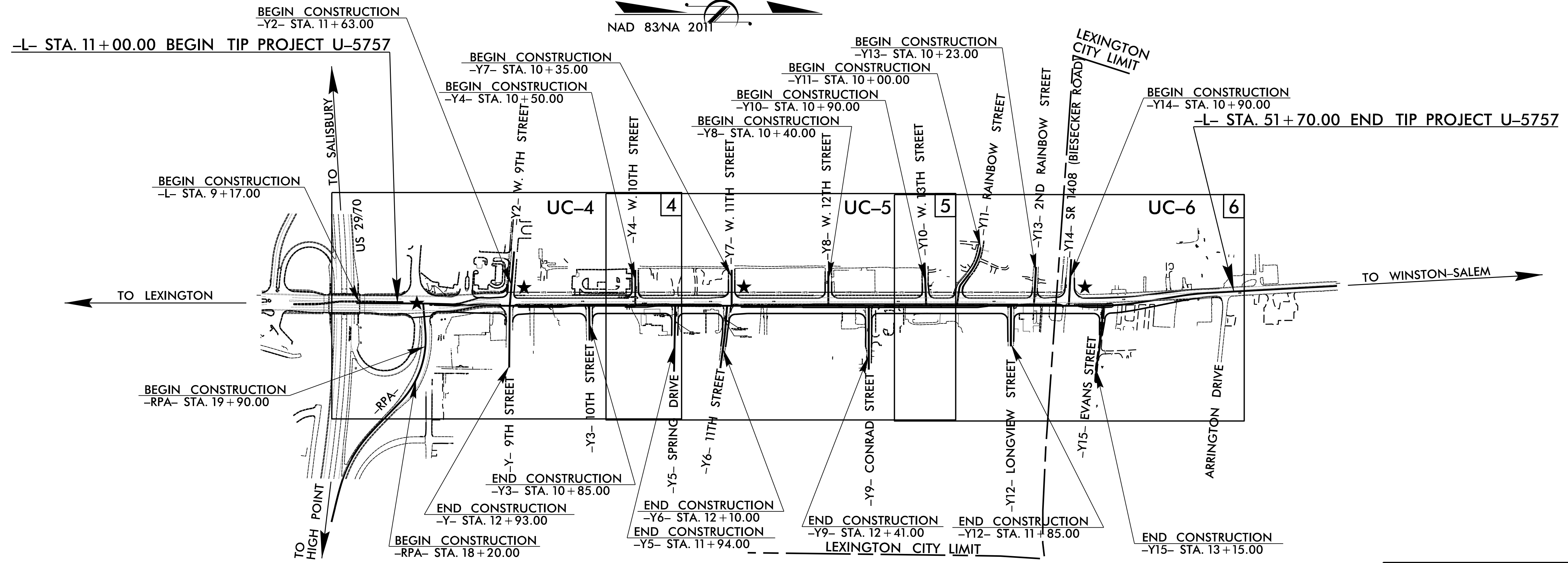
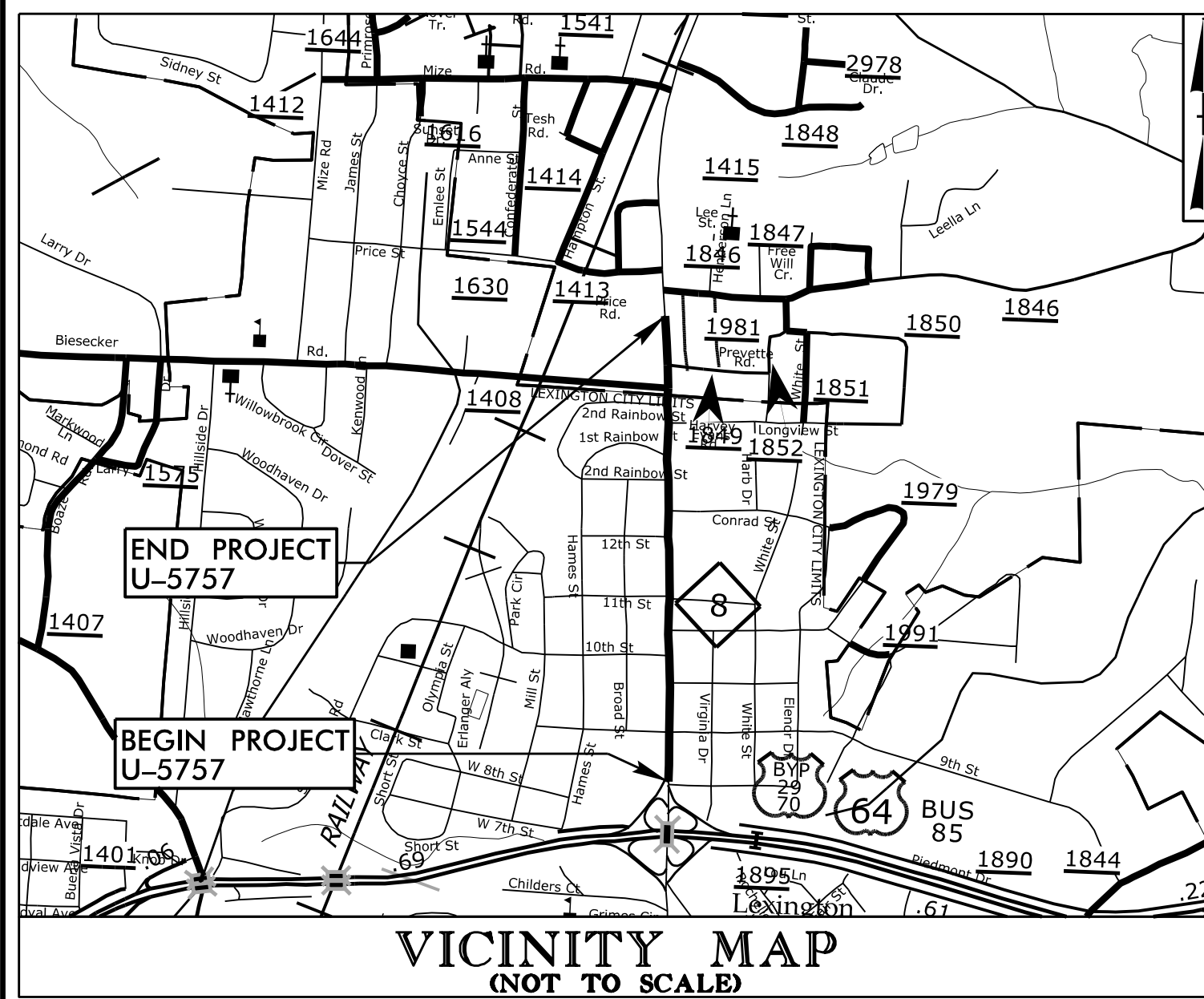
T.I.P. NO.	SHEET NO.
U-5757	UC-1

TIP PROJECT: U-5757

UTILITY CONSTRUCTION PLANS DAVIDSON COUNTY

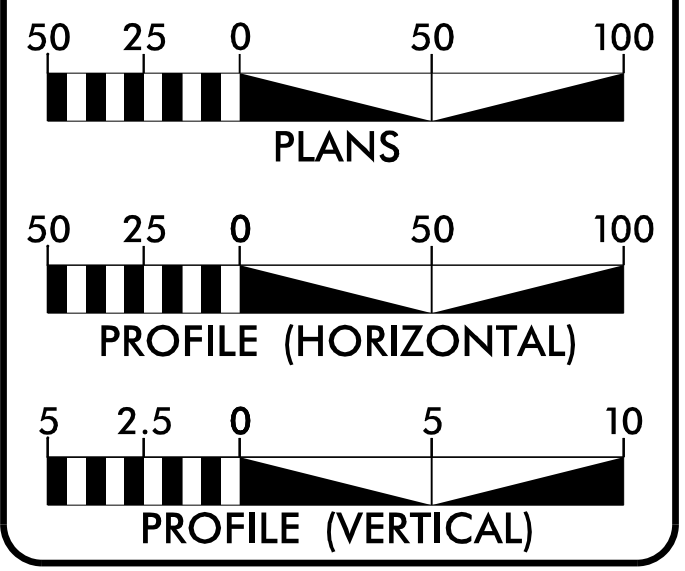
LOCATION: NC 8 (WINSTON ROAD) WIDENING FROM US 2970 BUS 85
TO SR 1408 (BIESECKER ROAD) IN LEXINGTON

TYPE OF WORK: UTILITY CONSTRUCTION



DOCUMENT NOT CONSIDERED FINAL
UNLESS ALL SIGNATURES COMPLETED

GRAPHIC SCALES



INDEX OF SHEETS

SHEET NO.:	DESCRIPTION:
UC-1	TITLE SHEET
UC-2	UTILITY SYMBOLOGY
UC-3	NOTES
UC-3A	DETAILS
UC-4 THRU UC-6	UTILITY CONSTRUCTION SHEETS
UC-7 THRU UC-10	PROFILE SHEETS

WATER AND SEWER OWNERS ON PROJECT

- A) WATER - CITY OF LEXINGTON
- B) SEWER - CITY OF LEXINGTON

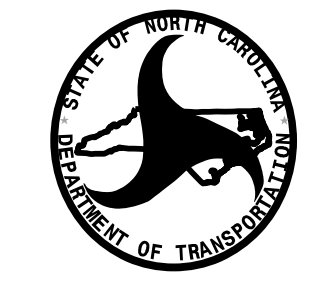
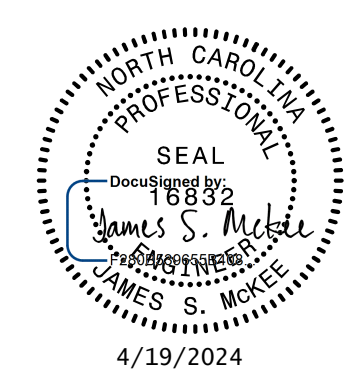
PREPARED IN THE OFFICE OF:

DAVIS • MARTIN • POWELL
ENGINEERS & SURVEYORS

6415 OLD PLANK RD., HIGH POINT, NC 27265
PHONE: (336)886-4821 FAX: (336)886-4458
WWW.DMP-INC.COM LICENSE: F-0245

Steve McKee, P.E.	CONSULTANT CONTACT #1
Kelly Hayes, P.E., P.L.S.	CONSULTANT CONTACT #2
Ralph Lowe	CONSULTANT CONTACT #3

SEAL



**DIVISION OF HIGHWAYS
DIVISION 9**
375 SILAS CREEK PARKWAY
WINSTON-SALEM, NC 27127
PHONE (336) 747-7800
FAX (336) 761-2004

Matt Jones, PE	NCDOT DIVISION 9 PROJECT DEVELOPMENT ENGINEER
Josh McMahan	NCDOT DIVISION 9 UTILITY ENGINEER
Lou Porter	NCDOT DIVISION 9 UTILITY COORDINATOR

\$\$\$\$\$ SYSTEM \$\$\$\$\$\$
\$\$\$\$\$ DDN \$\$\$\$\$\$
\$\$\$\$\$ USERNAME \$\$\$\$\$\$

STATE OF NORTH CAROLINA DIVISION OF HIGHWAYS

UTILITIES PLAN SHEET SYMBOLS

PROPOSED WATER SYMBOLS

Water Line (Sized as Shown)	
11 1/4 Degree Bend	
22 1/2 Degree Bend	
45 Degree Bend	
90 Degree Bend	
Plug	
Tee	
Cross	
Reducer	
Gate Valve	
Butterfly Valve	
Tapping Valve	
Line Stop	
Line Stop with Bypass	
Blow Off	
Fire Hydrant	
Relocate Fire Hydrant	
Remove Fire Hydrant	
Water Meter	
Relocate Water Meter	
Remove Water Meter	
Water Pump Station	
RPZ Backflow Preventer	
DCV Backflow Preventer	
Relocate RPZ Backflow Preventer	
Relocate DCV Backflow Preventer	

PROPOSED SEWER SYMBOLS

Gravity Sewer Line (Sized as Shown)	
Force Main Sewer Line (Sized as Shown)	
Manhole (Sized per Note)	
Sewer Pump Station	

PROPOSED MISCELLANEOUS UTILITIES SYMBOLS

Power Pole	
Telephone Pole	
Joint Use Pole	
Telephone Pedestal	
Utility Line by Others (Type as Shown)	
Trenchless Installation	
Encasement by Open Cut	
Encasement	

Thrust Block	
Air Release Valve	
Utility Vault	
Concrete Pier	
Steel Pier	
Plan Note	
Pay Item Note	

NOTE
PAY ITEM

EXISTING UTILITIES SYMBOLS

Power Pole	
Telephone Pole	
Joint Use Pole	
Utility Pole	
Utility Pole with Base	
H-Frame Pole	
Power Transmission Line Tower	
Water Manhole	
Power Manhole	
Telephone Manhole	
Sanitary Sewer Manhole	
Hand Hole for Cable	
Power Transformer	
Telephone Pedestal	
CATV Pedestal	
Gas Valve	
Gas Meter	
Located Miscellaneous Utility Object	
Abandoned According to Utility Records	
End of Information	

*Underground Power Line	
*Underground Telephone Cable	
*Underground Telephone Conduit	
*Underground Fiber Optics Telephone Cable	
*Underground TV Cable	
*Underground Fiber Optics TV Cable	
*Underground Gas Pipeline	
Aboveground Gas Pipeline	
*Underground Water Line	
Aboveground Water Line	
*Underground Gravity Sanitary Sewer Line	
Aboveground Gravity Sanitary Sewer Line	
*Underground SS Forced Main Line	
Underground Unknown Utility Line	
SUE Test Hole	
Water Meter	
Water Valve	
Fire Hydrant	
Sanitary Sewer Cleanout	

*For Existing Utilities
Utility Line Drawn from Record (Type as Shown)
Designated Utility Line (Type as Shown)

5/14/99
REV: 2/1/2012

5/14/24

REVISIONS

UTILITY CONSTRUCTION

GENERAL NOTES:

1. THE PROPOSED UTILITY CONSTRUCTION SHALL MEET THE APPLICABLE REQUIREMENTS OF THE NC DEPARTMENT OF TRANSPORTATION'S "STANDARD SPECIFICATIONS FOR ROADS AND STRUCTURES" DATED JANUARY 2024.
2. THE EXISTING UTILITIES BELONG TO THE CITY OF LEXINGTON.
3. ALL WATER LINES TO BE INSTALLED WITHIN COMPLIANCE OF THE RULES AND REGULATIONS OF THE NORTH CAROLINA DEPARTMENT OF ENVIRONMENTAL QUALITY, DIVISION OF WATER RESOURCES, PUBLIC WATER SUPPLY SECTION. PERFORM ALL WORK IN ACCORDANCE WITH THE APPLICABLE PLUMBING CODES.
4. THE UTILITY OWNER OWNS THE EXISTING UTILITY FACILITIES AND WILL OWN THE NEW UTILITY FACILITIES AFTER ACCEPTANCE BY THE DEPARTMENT. THE DEPARTMENT OWNS THE CONSTRUCTION CONTRACT AND HAS ADMINISTRATIVE AUTHORITY. COMMUNICATIONS AND DECISIONS BETWEEN THE CONTRACTOR AND UTILITY OWNER ARE NOT BINDING UPON THE DEPARTMENT OR THIS CONTRACT UNLESS AUTHORIZED BY THE ENGINEER. AGREEMENTS BETWEEN THE UTILITY OWNER AND CONTRACTOR FOR THE WORK THAT IS NOT PART OF THIS CONTRACT OR IS SECONDARY TO THIS CONTRACT ARE ALLOWED, BUT ARE NOT BINDING UPON THE DEPARTMENT.
5. PROVIDE ACCESS FOR THE DEPARTMENT PERSONNEL AND THE OWNER'S REPRESENTATIVES TO ALL PHASES OF CONSTRUCTION. NOTIFY DEPARTMENT PERSONNEL AND THE UTILITY OWNER TWO WEEKS PRIOR TO COMMENCEMENT OF ANY WORK AND ONE WEEK PRIOR TO SERVICE INTERRUPTION. KEEP UTILITY OWNER'S REPRESENTATIVES INFORMED OF WORK PROGRESS AND PROVIDE OPPORTUNITY FOR INSPECTION OF CONSTRUCTION AND TESTING.

6. THE PLANS DEPICT THE BEST AVAILABLE INFORMATION FOR THE LOCATION, SIZE, AND TYPE OF MATERIAL FOR ALL EXISTING UTILITIES. MAKE INVESTIGATIONS FOR DETERMINING THE EXACT LOCATION, SIZE, AND TYPE MATERIAL OF THE EXISTING FACILITIES AS NECESSARY FOR THE CONSTRUCTION OF THE PROPOSED UTILITIES AND FOR AVOIDING DAMAGE TO EXISTING FACILITIES. REPAIR ANY DAMAGE INCURRED TO EXISTING FACILITIES TO THE ORIGINAL OR BETTER CONDITION AT NO ADDITIONAL COST TO THE DEPARTMENT.
7. MAKE FINAL CONNECTIONS OF THE NEW WORK TO THE EXISTING SYSTEM WHERE INDICATED ON THE PLANS, AS REQUIRED TO FIT THE ACTUAL CONDITIONS, OR AS DIRECTED.
8. MAKE CONNECTIONS BETWEEN EXISTING AND PROPOSED UTILITIES AT TIMES MOST CONVENIENT TO THE PUBLIC, WITHOUT ENDANGERING THE UTILITY SERVICE, AND IN ACCORDANCE WITH THE UTILITY OWNER'S REQUIREMENTS. MAKE CONNECTIONS ON WEEKENDS, AT NIGHT, AND ON HOLIDAYS IF NECESSARY.
9. ALL UTILITY MATERIALS SHALL BE APPROVED PRIOR TO DELIVERY TO THE PROJECT. SEE 1500-7, " SUBMITTALS AND RECORDS" IN SECTION 1500 OF THE STANDARD SPECIFICATIONS.

PROJECT SPECIFIC NOTES:

1. UNLESS OTHERWISE NOTED, FOR PROPOSED WATER MAINS AND SEWER MAINS 4" THRU 16" DIAMETER, PIPE SHALL BE DUCTILE IRON, PC 350. PROVIDE RESTRAINED-JOINT DIP WHERE INDICATED ON PROFILES.
2. WATER LINE VALVES SHALL BE RESILIENT-SEAT GATE VALVES CONFORMING TO ANSI/AWWA C509, RATED FOR 200 PSI MINIMUM WORKING PRESSURE.
3. CONTRACTOR'S ATTENTION IS DIRECTED TO SECTIONS 102, 107, AND 1550 OF THE STANDARD SPECIFICATIONS CONCERNING TRENCHLESS INSTALLATION.
4. CONTRACTOR SHALL COORDINATE WITH THE UTILITY OWNER CONCERNING THE TIMING AND SCHEDULE OF REQUIRED SHUT-DOWNS OF ANY EXISTING WATER OR SEWER MAINS.
5. THE CITY OF LEXINGTON DOES NOT HAVE RECORD DRAWINGS FOR THE EXISTING WATER SYSTEM WITHIN THE PROJECT LIMITS. EXISTING WATER LINES ARE DEPICTED FROM AVAILABLE SCHEMATIC DRAWINGS, FROM LIMITED SUBSURFACE UTILITY ENGINEERING (SUE) BY THE SURVEYING CONSULTANT, AND FROM HISTORICAL KNOWLEDGE OF THE SYSTEM AS CONVEYED BY THE CITY OF LEXINGTON UTILITIES DEPARTMENT. THE CONTRACTOR SHALL PERFORM INVESTIGATIONS AS NECESSARY TO CONFIRM WHAT IS DEPICTED ON THE PLANS, ESPECIALLY AT LOCATIONS WHERE PROPOSED WATER LINES WILL TIE INTO EXISTING WATER LINES. CONTRACTOR SHALL NOTIFY THE ENGINEER WITH ANY DISCOVERIES THAT MAY REQUIRE DEVIATIONS FROM THE PLANS.
6. THE CONTRACTOR SHALL REPLACE ANY DAMAGED SEWER LATERALS AND/OR CLEANOUTS AS DIRECTED BY THE ENGINEER. THE NECESSARY QUANTITIES HAVE BEEN ADDED TO THE CONTRACT TO FACILITATE THIS PROCEDURE.

LIST OF STANDARD DRAWINGS

- 1515.01 WATER METER
- 1515.02 FIRE HYDRANT
- 1520.01 SEWER CLEAN OUT
- 1525.06 PRECAST CONCRETE SANITARY SEWER MANHOLE WITH CAST-IN-PLACE BOTTOM

PROJECT REFERENCE NO. U-5757	SHEET NO. UC-3
DESIGNED BY: DMP	
DRAWN BY: DMP	
CHECKED BY: DMP	
APPROVED BY:	
REVISED:	
NORTH CAROLINA DEPARTMENT OF TRANSPORTATION UTILITIES ENGINEERING SEC. PHONE: (919) 707-6690 FAX: (919) 250-4151	
UTILITY CONSTRUCTION PLANS ONLY	

UTILITY CONSTRUCTION

**DOCUMENT NOT CONSIDERED FINAL
UNLESS ALL SIGNATURES COMPLETED**

5/14/99

REVISIONS

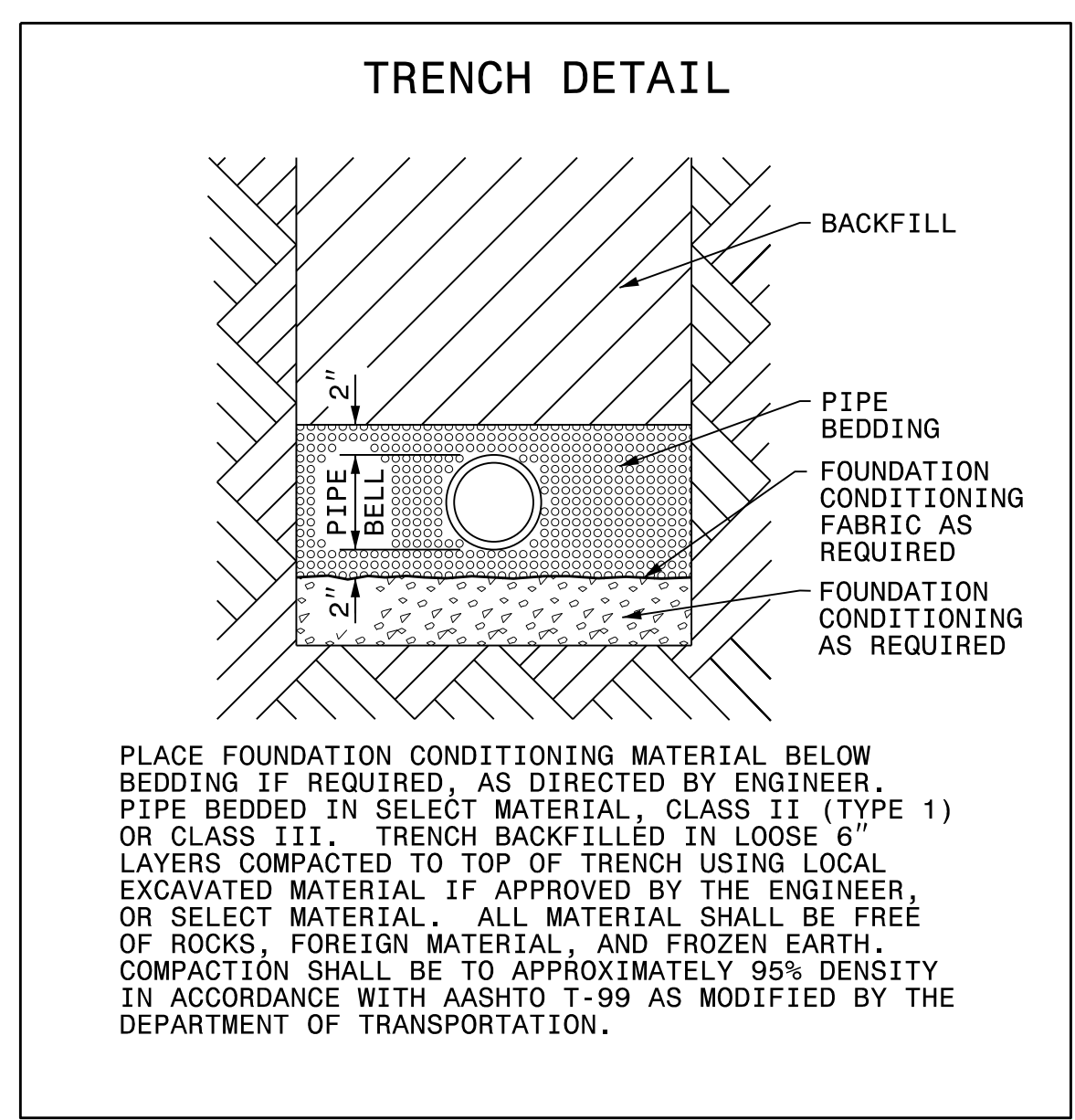
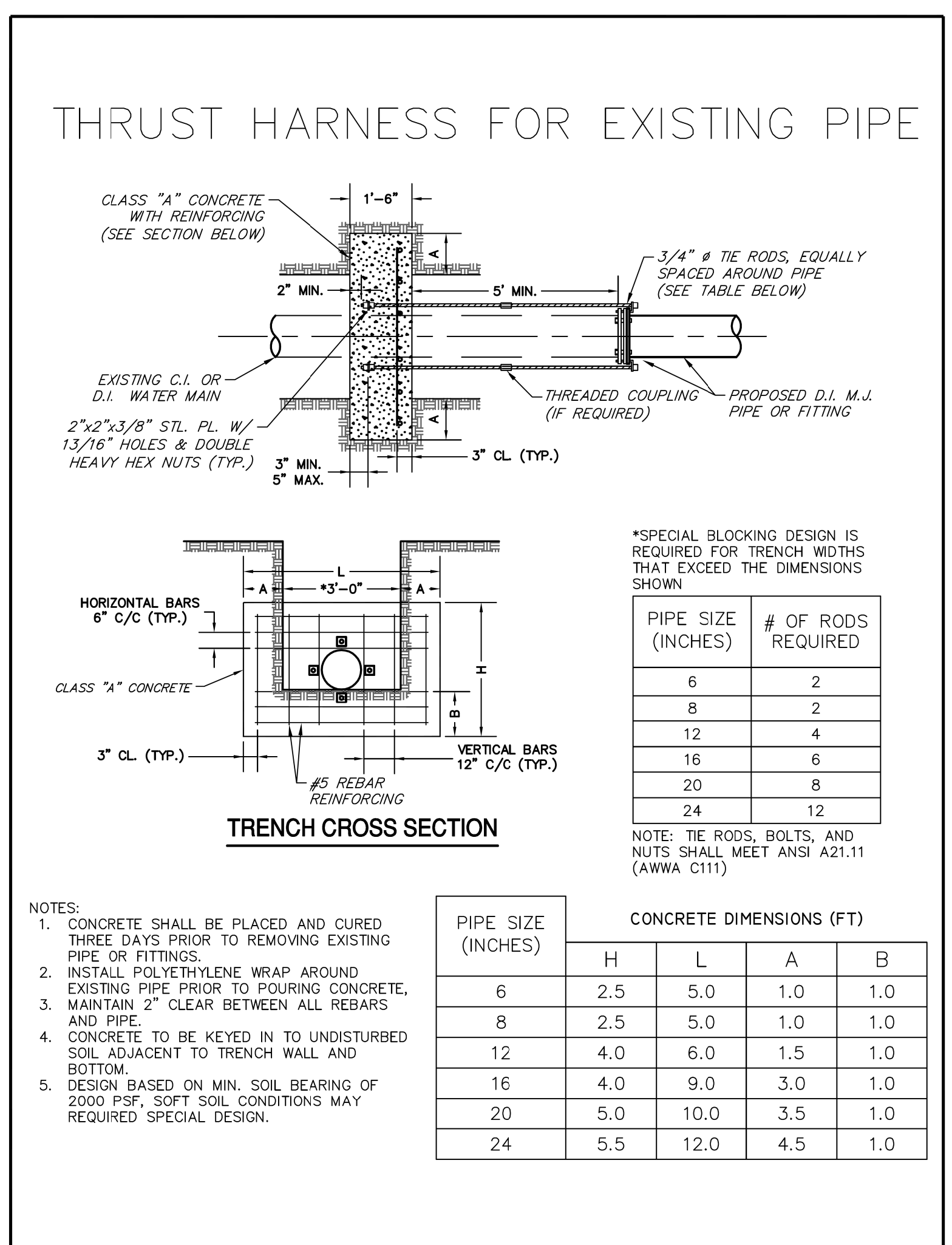
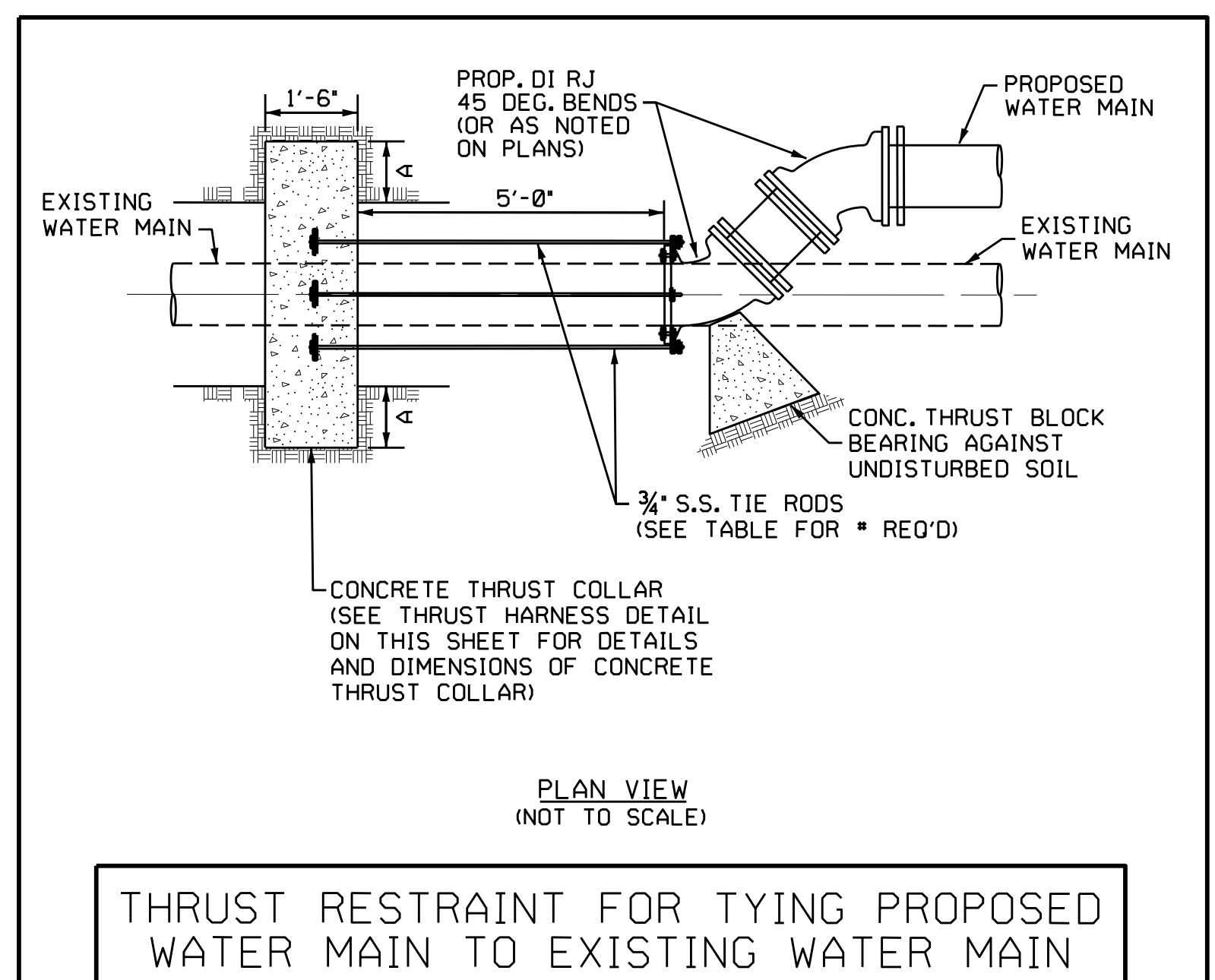
PROJECT REFERENCE NO.	SHEET NO.
U-5757	UC-3A
DESIGNED BY: DMP	
DRAWN BY: DMP	
CHECKED BY: DMP	
APPROVED BY:	
REVISED:	
NORTH CAROLINA DEPARTMENT OF TRANSPORTATION UTILITIES ENGINEERING SEC. PHONE: (919) 707-6690 FAX: (919) 250-4151	
UTILITY CONSTRUCTION PLANS ONLY	

PROJECT TYPICAL DETAILS

UTILITY CONSTRUCTION

DOCUMENT NOT CONSIDERED FINAL UNLESS ALL SIGNATURES COMPLETED

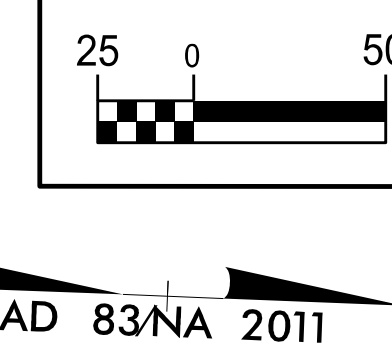
NOMINAL PIPE SIZE (INCHES)	TRENCH WIDTH (INCHES)	NOMINAL PIPE SIZE (INCHES)	TRENCH WIDTH (INCHES)
4	28	20	44
6	30	24	48
8	32	30	54
10	34	36	60
12	36	42	66
14	38	48	72
16	40	54	78
18	42		



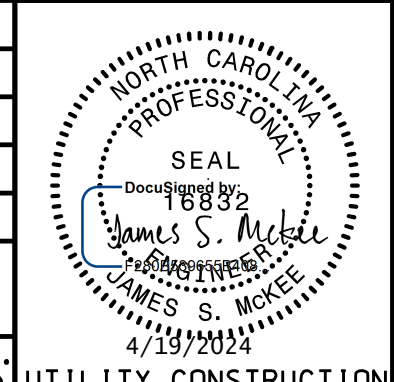
NOTE: CONCRETE THRUST COLLARS ARE SUGGESTED AT LOCATIONS WHERE PROPOSED WATER LINES WILL CONNECT TO EXISTING WATER LINES. PER DIVISION 15 OF THE NCDOT STANDARD SPECIFICATIONS, SECTION 1505-3-E, THE CONTRACTOR IS RESPONSIBLE FOR DESIGN AND CONSTRUCTION OF THE THRUST RESTRAINT SELECTED FOR THE PARTICULAR APPLICATION. CONCRETE THRUST COLLARS, OR OTHER THRUST RESTRAINT DEVICES, SHALL BE CONSIDERED INCIDENTAL TO THE CONTRACT.

<p>-L- PI Sta. 12+98.80 Δ = 2° 22' 08.7" (RT) D = 1° 12' 04.2" L = 197.23' T = 98.63' R = 4,770.00' SE = NC</p>	<p>-L- PI Sta. 15+2.06 Δ = 2° 45' 13.7" (LT) D = 1° 12' 04.2" L = 229.26' T = 114.65' R = 4,770.00' SE = NC</p>	<p>-L- PIs Sta. 11+97.82 Θs = 8° 58' 47.7" Ls = 184.00' L = 122.82' ST = 61.48'</p>	<p>-RPA- PI Sta. 13+24.10 Δ = 12° 39' 23.3" (RT) D = 9° 45' 38.8" L = 129.67' T = 65.10' R = 587.00'</p>	<p>-L- PIs Sta. 14+50.14 Θs = 8° 58' 47.7" Ls = 184.00' L = 122.82' ST = 61.48'</p>	<p>-L- PI Sta. 18+86.34 Δ = 48° 51' 27.8" (LT) D = 12° 54' 16.0" L = 378.61' T = 201.68' R = 444.00' SE = SEE PLANS</p>
---	---	---	--	---	---

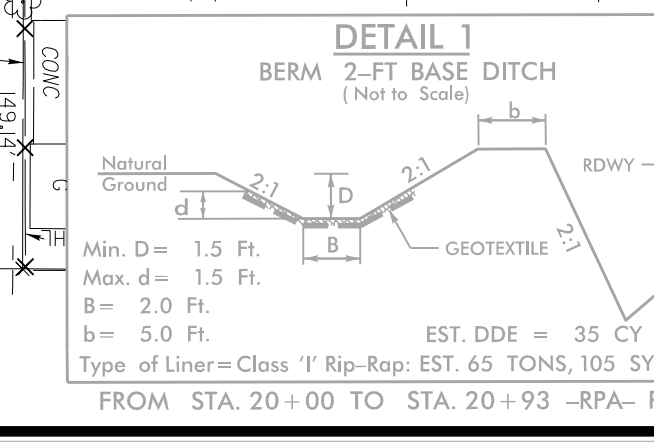
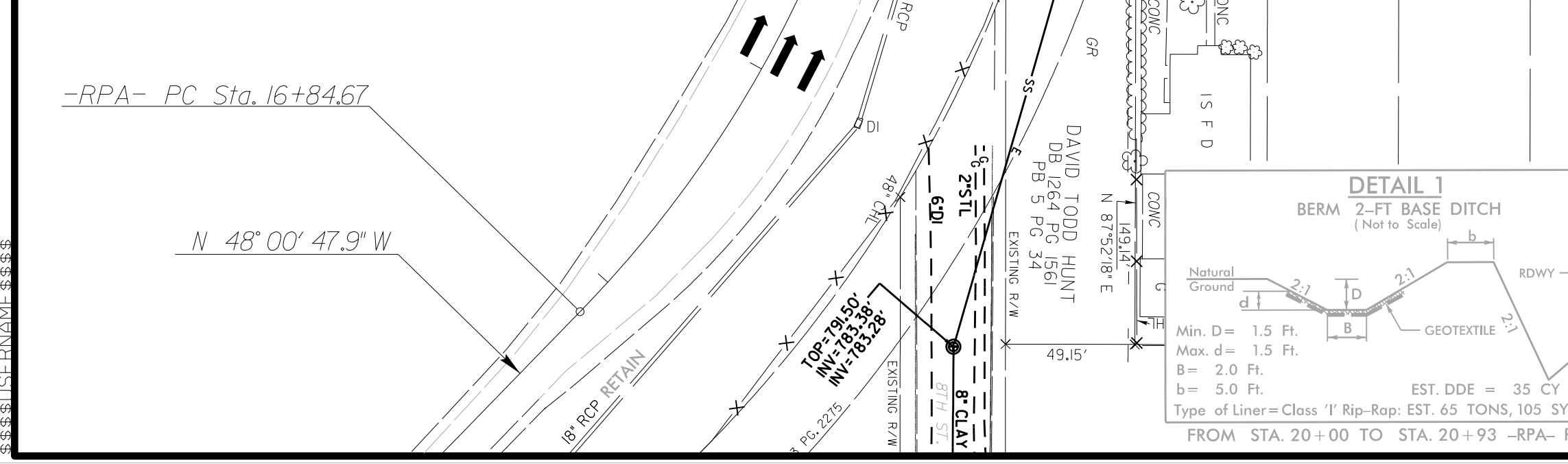
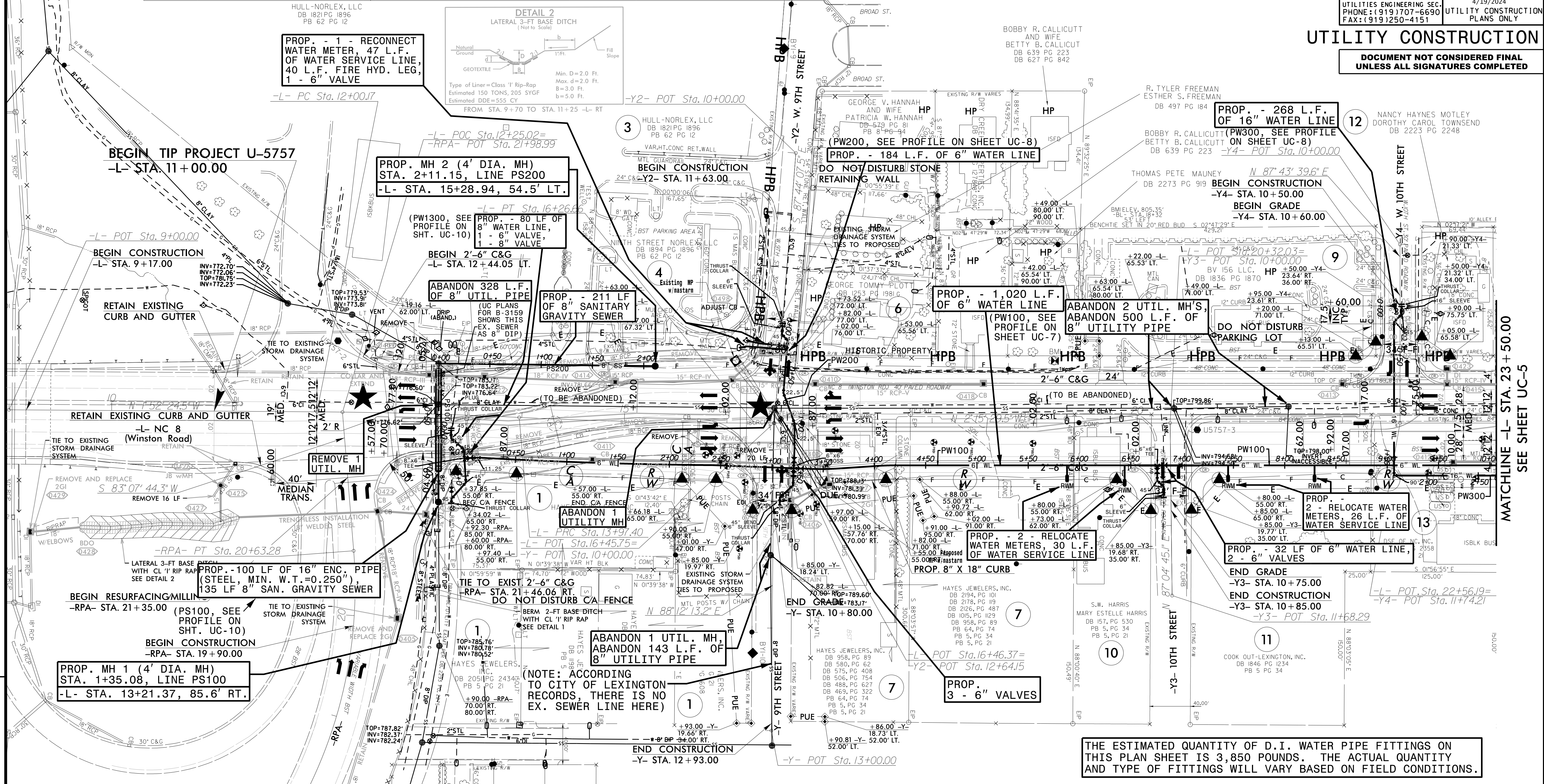
★ SIGNAL UPGRADES



PROJECT REFERENCE NO.	SHEET NO.
U-5757	UC-4
DESIGNED BY: DMP	
DRAWN BY: DMP	
CHECKED BY: DMP	
APPROVED BY:	
REVISED:	
NORTH CAROLINA DEPARTMENT OF TRANSPORTATION	UTILITY CONSTRUCTION PLANS ONLY
UTILITIES ENGINEERING SEC. PHONE: (919) 707-6690 FAX: (919) 250-4151	



UTILITY CONSTRUCTION
DOCUMENT NOT CONSIDERED FINAL UNLESS ALL SIGNATURES COMPLETED



NOTE: 1.) TO MINIMIZE IMPACTS TO THE HISTORIC PROPERTY AND STONE RETAINING WALL ON THE NORTHWEST CORNER OF W. 9TH STREET AND NC 8. THE DESIGN WILL INCORPORATE OVERLAY AND MILLING. THE PROPOSED PAVEMENT WILL NEED TO TIE TO THE EXISTING C & G ALONG -Y2- STA. 11+63.00 TO STA. 12+05.44 LT. ALSO, THE -Y2- OVERLAY PAVEMENT WILL NEED TO TRANSITION TO MATCH THE PROPOSED CROSS SLOPE AT THE GRADE TIE TO -L-.
2.) PRIOR TO COMMENCING WORK ON ANY TRENCHLESS INSTALLATION, PROVIDE A DESIGN FOR THE TRENCHLESS INSTALLATION CERTIFIED BY AN ENGINEER LICENSED BY THE STATE OF NORTH CAROLINA, AS REQUIRED BY SUBARTICLE 1550-3(B) OF THE STANDARD SPECIFICATIONS.

US 29/70 BUS 85	W. 9TH STREET	W. 10TH STREET
16000	1800	1400
19000	2000	1600
4900	1200	1000
6500	500	500
2200	1800	1800
18800	800	700
NC 8 15400	1800	1500
4900	500	1000
5100	900	100
5700	500	100
16600	1800	400
20000	1600	600
2040 ADT	2040 ADT	2040 ADT
US 29/70 BUS 85	9TH STREET	10TH STREET

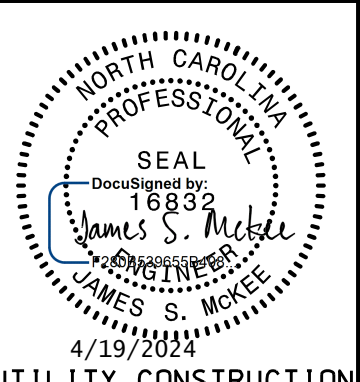
THE ESTIMATED QUANTITY OF D.I. WATER PIPE FITTINGS ON THIS PLAN SHEET IS 3,850 POUNDS. THE ACTUAL QUANTITY AND TYPE OF FITTINGS WILL VARY BASED ON FIELD CONDITIONS.

MATCHLINE -L- STA. 23+50.00
SEE SHEET UC-5

★ SIGNAL UPGRADES



PROJECT REFERENCE NO.	U-5757
SHEET NO.	UC-5
DESIGNED BY:	DMP
DRAWN BY:	DMP
CHECKED BY:	DMP
APPROVED BY:	
REVISED:	
NORTH CAROLINA DEPARTMENT OF TRANSPORTATION	
UTILITIES ENGINEERING SEC. PHONE: (919) 707-6690 FAX: (919) 250-4151	
UTILITY CONSTRUCTION PLANS ONLY	

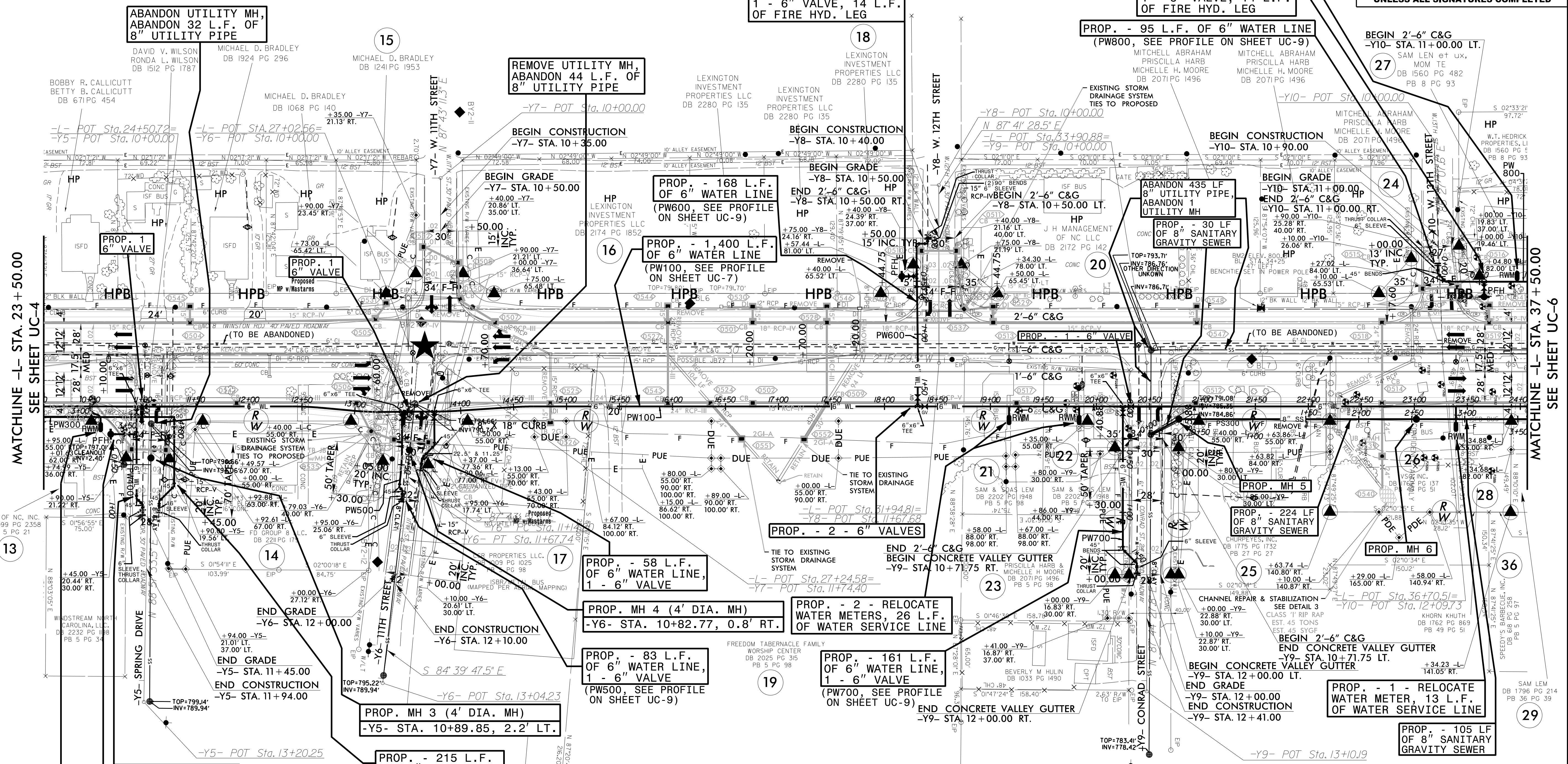
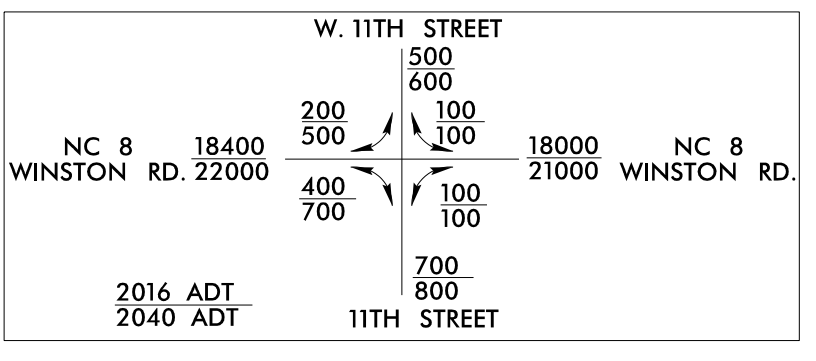


UTILITY CONSTRUCTION

DOCUMENT NOT CONSIDERED FINAL UNLESS ALL SIGNATURES COMPLETED

THE ESTIMATED QUANTITY OF D.I. WATER PIPE FITTINGS ON THIS PLAN SHEET IS 4,700 POUNDS. THE ACTUAL QUANTITY AND TYPE OF FITTINGS WILL VARY BASED ON FIELD CONDITIONS.

-Y6-
 PI Sta 11+40.98
 $\Delta = 3^{\circ}04'04.0''$ (RT)
 $L = 53.54'$
 $T = 26.78'$
 $R = 1,000.00'$
 SE = SEE PLANS



MATCHLINE -L- STA. 23 + 50.00 SEE SHEET UC-4

MATCHLINE -L- STA. 37 + 50.00 SEE SHEET UC-6

ABANDON UTILITY MH,
 ABANDON 32 L.F. OF
 8" UTILITY PIPE

REMOVE UTILITY MH,
 ABANDON 44 L.F. OF
 8" UTILITY PIPE

PROP. - 1 - FIRE HYD.
 1 - 6" VALVE, 14 L.F.
 OF FIRE HYD. LEG

PROP. - 1 - RELOCATE
 WATER METER, 5 L.F.
 OF WATER SERVICE LINE

PROP. - 1 - FIRE HYD.
 1 - 6" VALVE, 14 L.F.
 OF FIRE HYD. LEG

PROP. - 95 L.F. OF 6" WATER LINE
 (PW800, SEE PROFILE ON SHEET UC-9)

BEGIN 2'-6" C&G
 -Y10- STA. 11+00.00 LT.

PROP. 1
 6" VALVE

PROP. 1
 6" VALVE

PROP. - 168 L.F.
 OF 6" WATER LINE
 (PW600, SEE PROFILE
 ON SHEET UC-9)

PROP. - 1,400 L.F.
 OF 6" WATER LINE
 (PW100, SEE PROFILE
 ON SHEET UC-7)

ABANDON 435 LF
 8" UTILITY PIPE,
 ABANDON 1
 UTILITY MH

PROP. - 30 LF
 OF 8" SANITARY
 GRAVITY SEWER

13

14

15

16

17

18

19

20

21

22

23

24

25

26

27

28

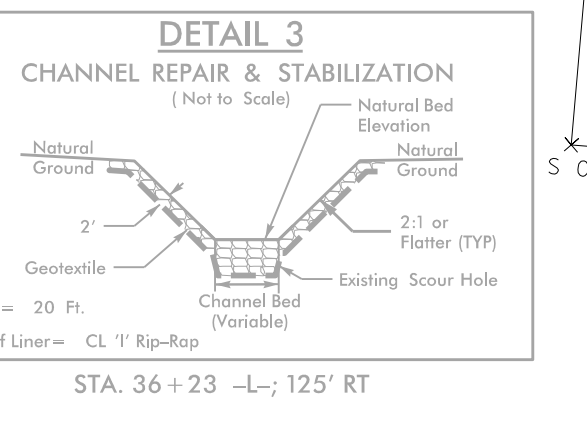
29

PROP. - 103 L.F.
 OF 6" WATER LINE,
 1 - 6" VALVE
 (PW400, SEE PROFILE
 ON SHEET UC-8)

PROP. - 1 - FIRE HYD.
 1 - 6" VALVE, 24 L.F.
 OF FIRE HYD. LEG

PROP. - 1 - RELOCATE
 WATER METER, 25 L.F.
 OF WATER SERVICE LINE

PROP. MH 3 (4' DIA. MH)
 -Y5- STA. 10+89.85, 2.2' LT.



PROP. - 58 L.F.
 OF 6" WATER LINE,
 1 - 6" VALVE

PROP. MH 4 (4' DIA. MH)
 -Y6- STA. 10+82.77, 0.8' RT.

PROP. - 83 L.F.
 OF 6" WATER LINE,
 1 - 6" VALVE
 (PW500, SEE PROFILE
 ON SHEET UC-9)

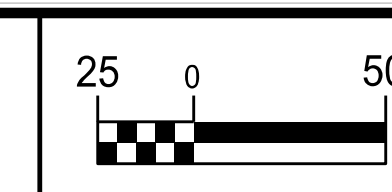
PROP. - 161 L.F.
 OF 6" WATER LINE,
 1 - 6" VALVE
 (PW700, SEE PROFILE
 ON SHEET UC-9)

PROP. - 2 - RELOCATE
 WATER METERS, 26 L.F.
 OF WATER SERVICE LINE

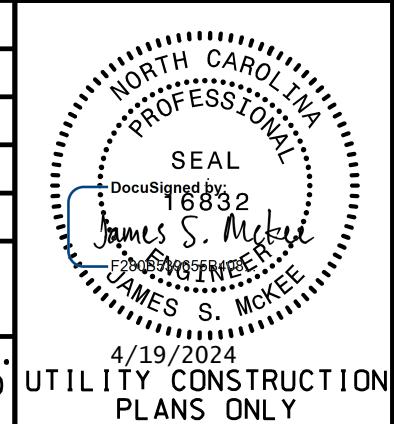
PROP. MH #	SEWER LINE STATION	DIA.	ROADWAY STATION AND OFFSET
5	0+30.25, PS300	4'	-L- STA. 34+21.21, 53.3' RT.
6	2+54.30, PS300	4'	-L- STA. 36+45.26, 53.3' RT.

SEE SHEET UC-10 FOR PROFILE OF PROPOSED SEWER LINE PS300.

STRUCTURES 0551 AND 0552 ARE APPROXIMATE BASED UPON BEST AVAILABLE DATA DURING DESIGN. FIELD VERIFY HORIZONTAL AND VERTICAL LOCATIONS. ADJUST DESIGN AS NECESSARY AND AS DIRECTED BY THE ENGINEER.



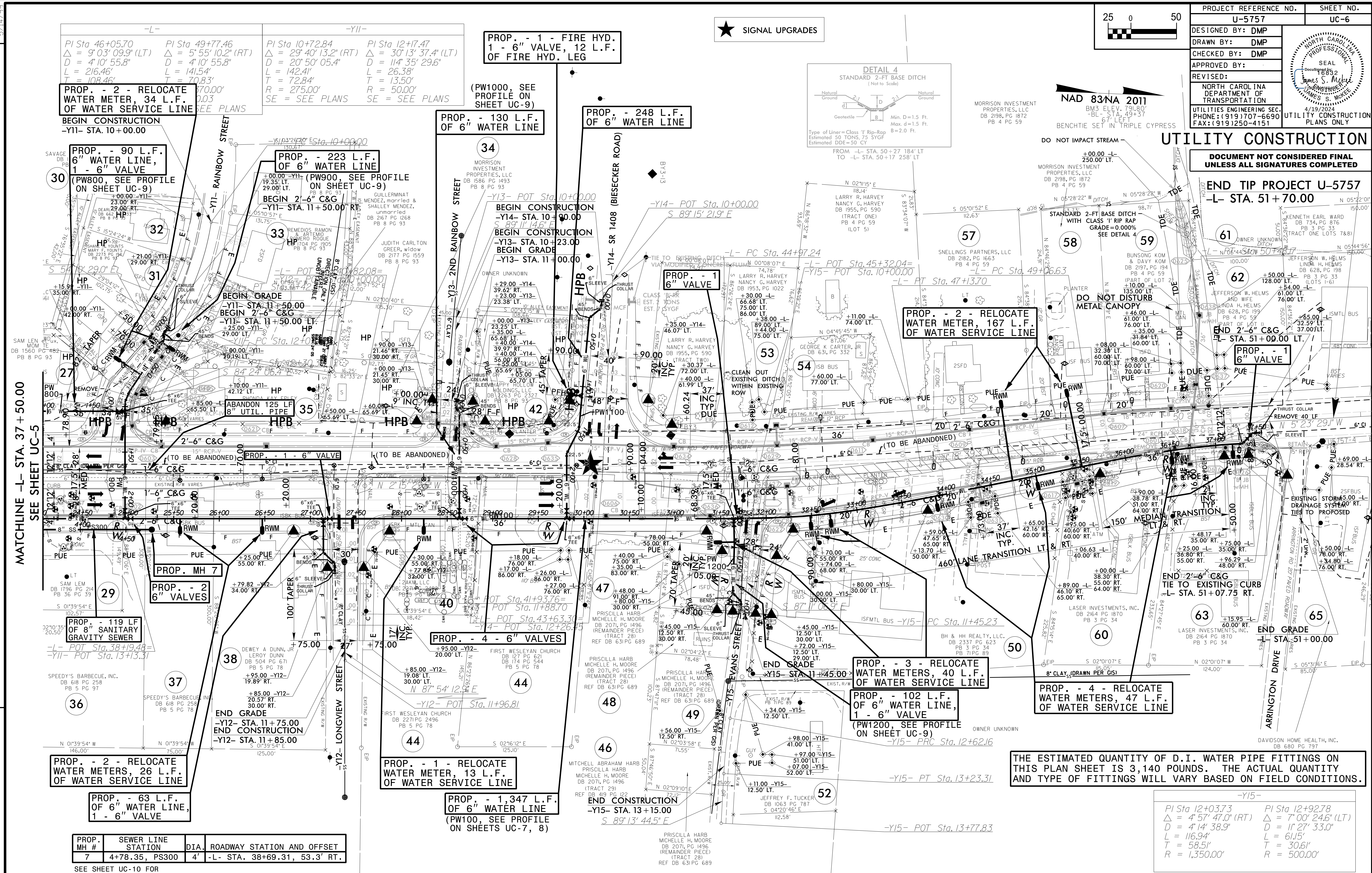
PROJECT REFERENCE NO.	UC-6
DESIGNED BY:	DMP
DRAWN BY:	DMP
CHECKED BY:	DMP
APPROVED BY:	
REVISID:	
NORTH CAROLINA DEPARTMENT OF TRANSPORTATION	4/19/2024
UTILITIES ENGINEERING SEC. PHONE: (919) 707-6690 FAX: (919) 250-4151	UTILITY CONSTRUCTION PLANS ONLY



UTILITY CONSTRUCTION

DOCUMENT NOT CONSIDERED FINAL UNLESS ALL SIGNATURES COMPLETED

END TIP PROJECT U-5757
-L- STA. 51+70.00

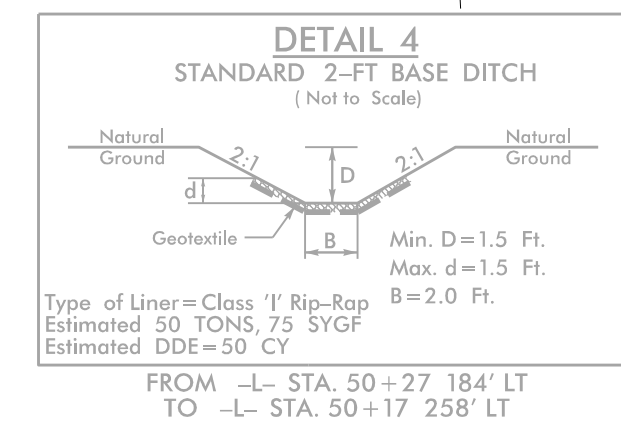


MATCHLINE -L- STA. 37+50.00
SEE SHEET UC-5

REVISIONS

-L-	-Y11-
PI Sta 46+05.70 Δ = 9'03" 09.9" (LT) D = 4'10" 55.8" L = 216.46' T = 108.46'	PI Sta 49+77.46 Δ = 5'55" 10.2" (RT) D = 4'10" 55.8" L = 141.54' T = 70.83'
PI Sta 10+72.84 Δ = 29'40" 13.2" (RT) D = 20'50" 05.4" L = 142.41' R = 72.84' T = 275.00' SE = SEE PLANS	PI Sta 12+17.47 Δ = 30'13" 37.4" (LT) D = 114'35" 29.6" L = 26.38' R = 13.50' T = 50.00' SE = SEE PLANS

★ SIGNAL UPGRADES



MORRISON INVESTMENT PROPERTIES, LLC
DB 2182, PG 1663
DB 2186, PG 1872
PB 4 PG 59

NAD 83/NA 2011
BM 5 ELEV. 791.80'
-BL- STA. 43+37.67'
BENCHM SET IN TRIPLE CYPRESS

PROP. - 2 - RELOCATE WATER METER, 34 L.F. OF WATER SERVICE LINE
BEGIN CONSTRUCTION
-Y11- STA. 10+00.00

PROP. - 90 L.F. 6" WATER LINE, 1 - 6" VALVE
(PW800, SEE PROFILE ON SHEET UC-9)

PROP. - 223 L.F. OF 6" WATER LINE
(PW900, SEE PROFILE ON SHEET UC-9)
BEGIN 2'-6" C&G
-Y11- STA. 11+50.00 RT.

PROP. - 130 L.F. OF 6" WATER LINE
(PW1000, SEE PROFILE ON SHEET UC-9)

PROP. - 248 L.F. OF 6" WATER LINE
(BIESECKER ROAD)

PROP. - 2 - RELOCATE WATER METER, 167 L.F. OF WATER SERVICE LINE

PROP. - 119 LF OF 8" SANITARY GRAVITY SEWER
-L- POT Sta. 38+19.48=
-Y11- POT Sta. 13+13.31

PROP. - 2 - RELOCATE WATER METERS, 26 L.F. OF WATER SERVICE LINE

PROP. - 63 L.F. OF 6" WATER LINE, 1 - 6" VALVE

PROP. MH #	SEWER LINE STATION	DIA.	ROADWAY STATION AND OFFSET
7	4+78.35, PS300	4'	-L- STA. 38+69.31, 53.3' RT.

SEE SHEET UC-10 FOR PROFILE OF PROPOSED SEWER LINE PS300.

PROP. - 1 - RELOCATE WATER METER, 13 L.F. OF WATER SERVICE LINE

PROP. - 1,347 L.F. OF 6" WATER LINE
(PW100, SEE PROFILE ON SHEETS UC-7, 8)

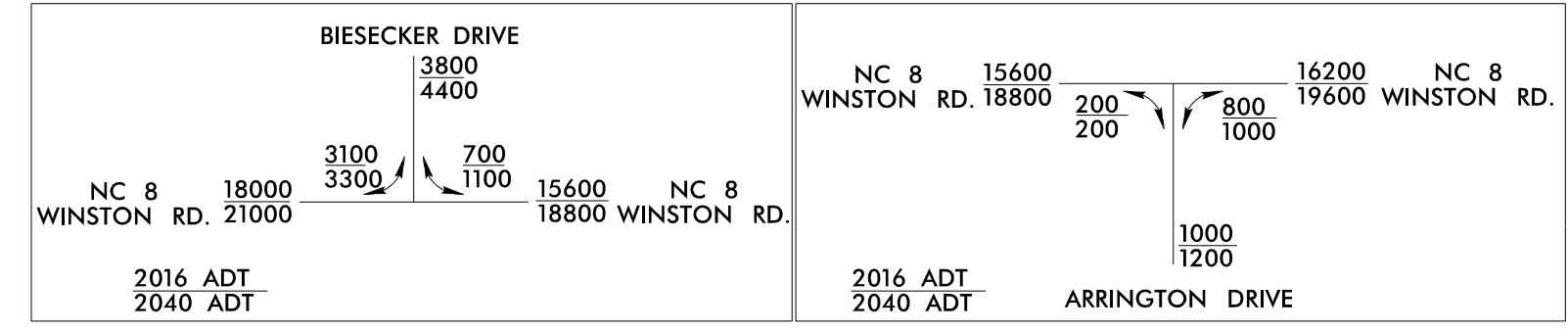
PROP. - 3 - RELOCATE WATER METERS, 40 L.F. OF WATER SERVICE LINE

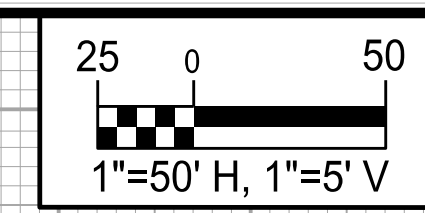
PROP. - 102 L.F. OF 6" WATER LINE, 1 - 6" VALVE
(PW1200, SEE PROFILE ON SHEET UC-9)

PROP. - 4 - RELOCATE WATER METERS, 47 L.F. OF WATER SERVICE LINE

THE ESTIMATED QUANTITY OF D.I. WATER PIPE FITTINGS ON THIS PLAN SHEET IS 3,140 POUNDS. THE ACTUAL QUANTITY AND TYPE OF FITTINGS WILL VARY BASED ON FIELD CONDITIONS.

-Y15-	-Y15-
PI Sta 12+03.73 Δ = 4'57" 47.0" (RT) D = 4'14" 38.9" L = 116.95' T = 58.51' R = 1,350.00'	PI Sta 12+92.78 Δ = 7'00" 24.6" (LT) D = 11'27" 33.0" L = 61.95' T = 30.61' R = 500.00'

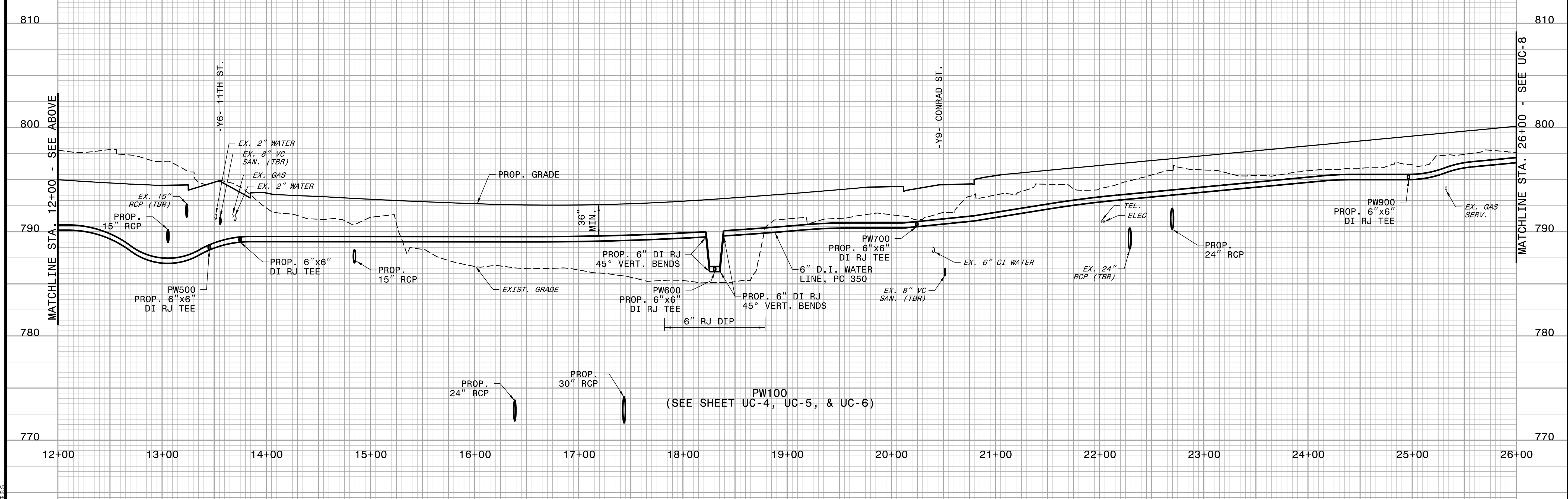
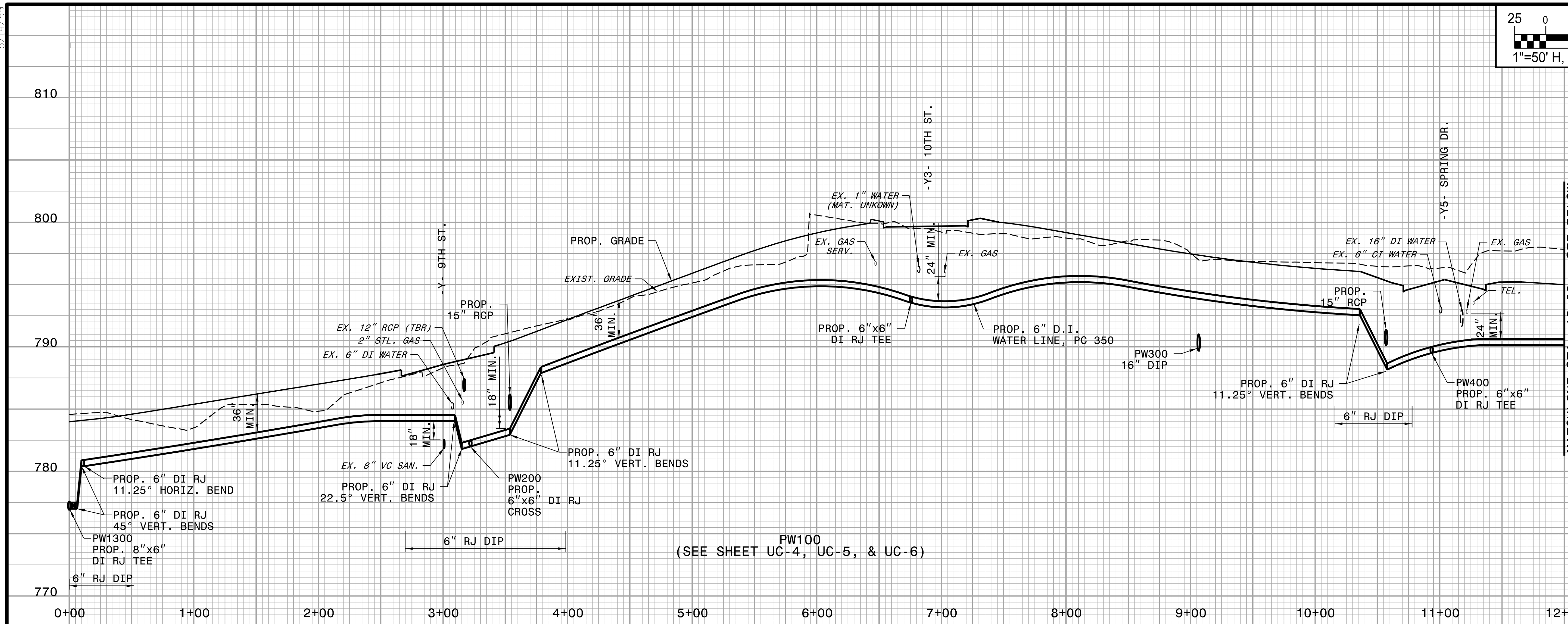


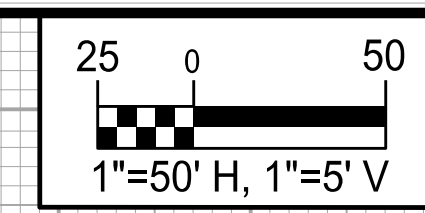


PROJECT REFERENCE NO.	SHEET NO.
U-5757	UC-7
DESIGNED BY: DMP	
DRAWN BY: DMP	
CHECKED BY: DMP	
APPROVED BY:	
REVISED:	4/19/2024
NORTH CAROLINA DEPARTMENT OF TRANSPORTATION	
UTILITIES ENGINEERING SEC. PHONE: (919) 707-6690 FAX: (919) 250-4151	UTILITY CONSTRUCTION PLANS ONLY

UTILITY CONSTRUCTION

DOCUMENT NOT CONSIDERED FINAL UNLESS ALL SIGNATURES COMPLETED

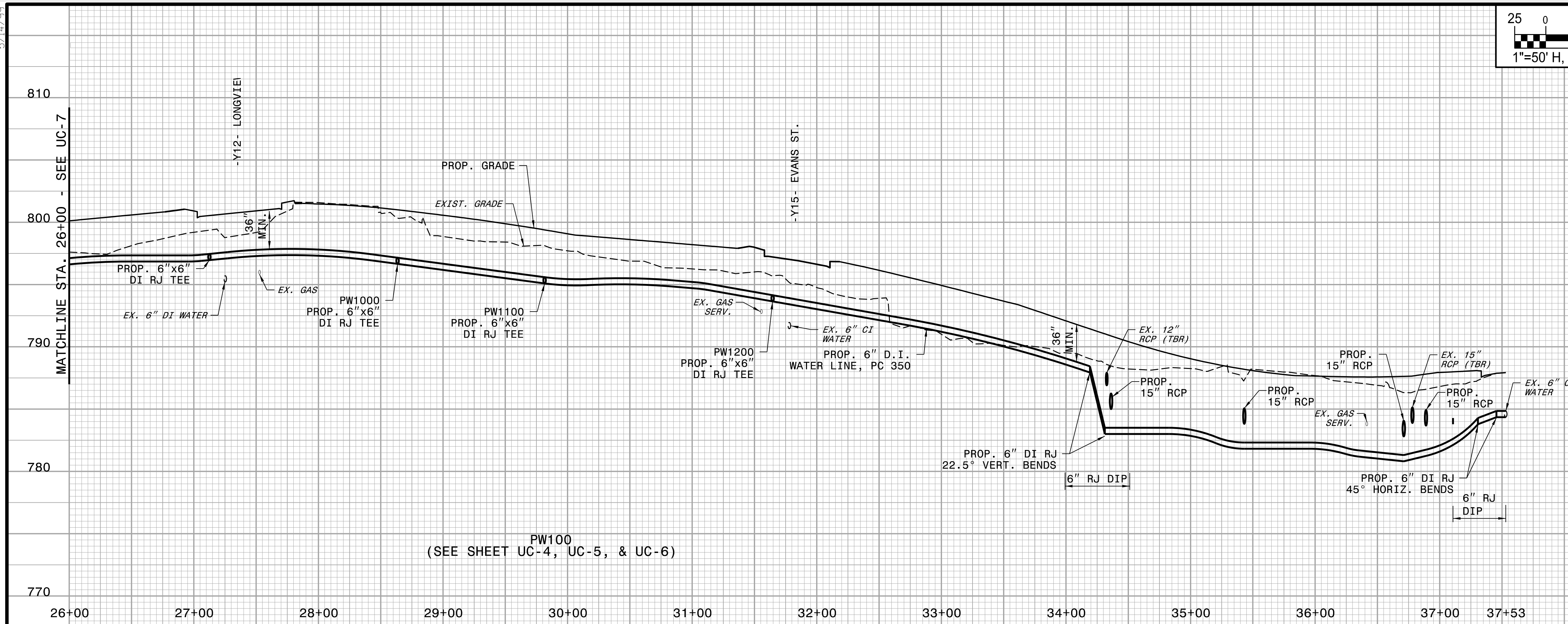




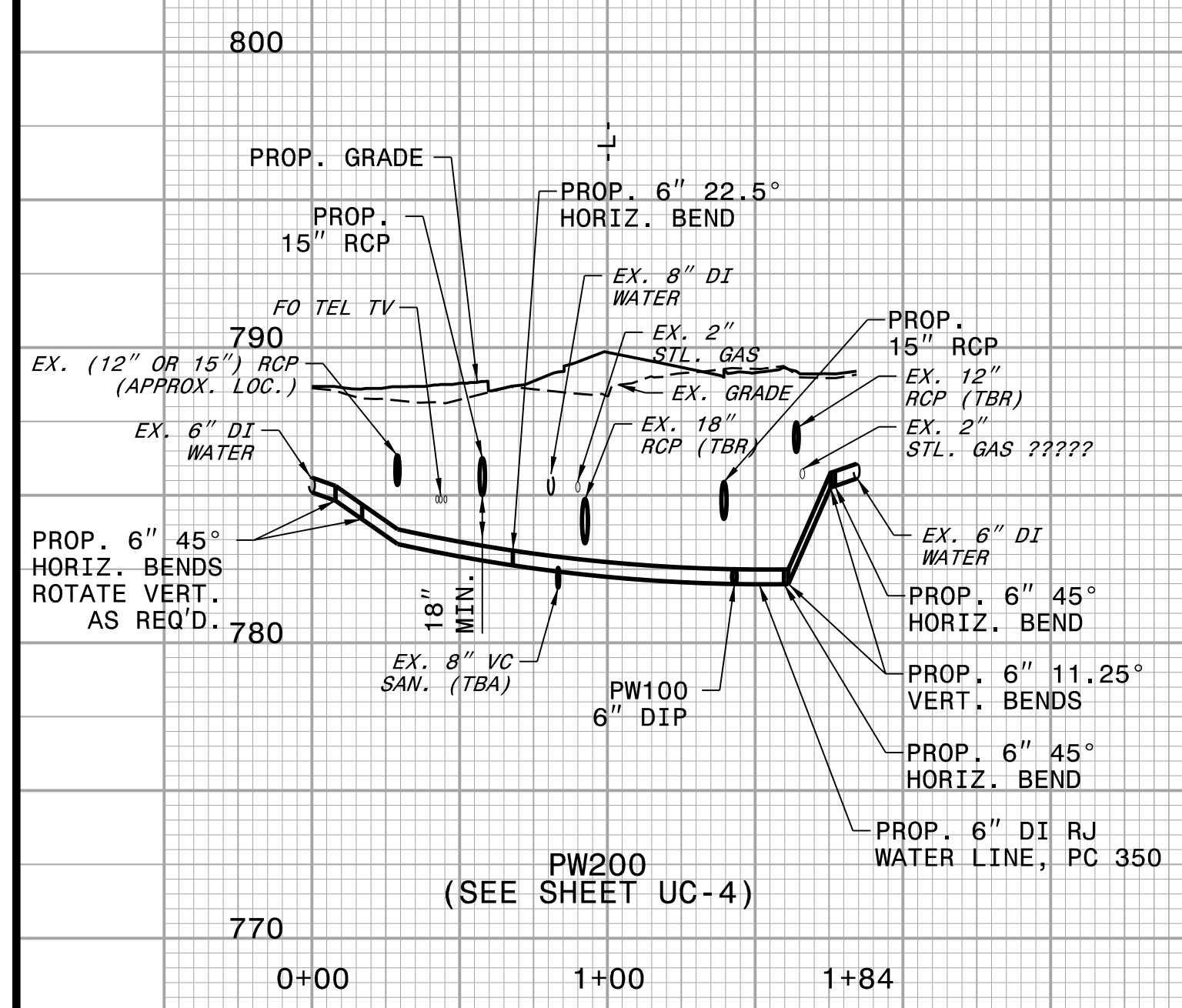
PROJECT REFERENCE NO. U-5757	SHEET NO. UC-8
DESIGNED BY: DMP	
DRAWN BY:	
CHECKED BY: DMP	
APPROVED BY:	
REVISED:	
NORTH CAROLINA DEPARTMENT OF TRANSPORTATION UTILITIES ENGINEERING SEC. PHONE: (919) 707-6690 FAX: (919) 250-4151	
UTILITY CONSTRUCTION PLANS ONLY	

UTILITY CONSTRUCTION

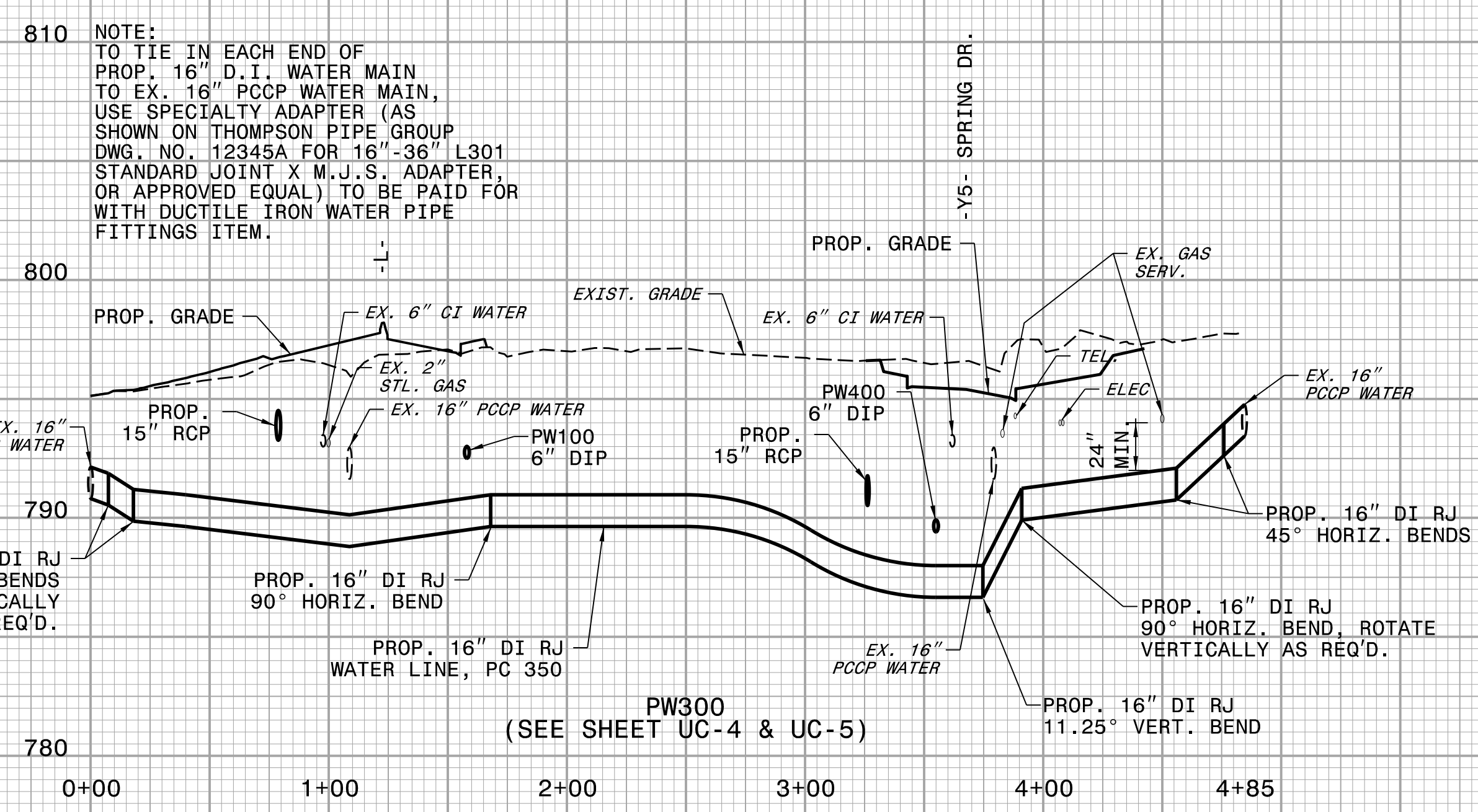
**DOCUMENT NOT CONSIDERED FINAL
UNLESS ALL SIGNATURES COMPLETED**



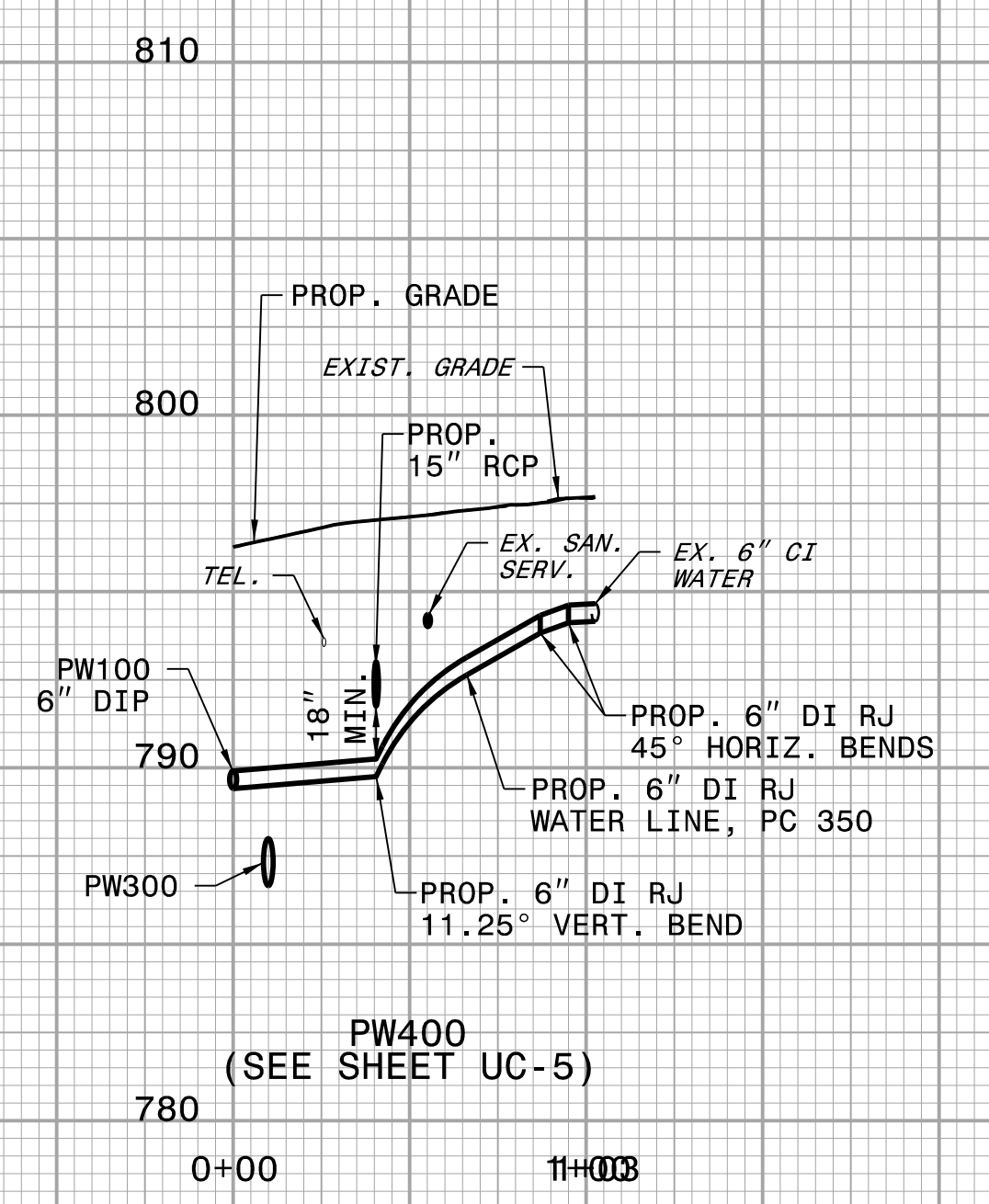
PW100
(SEE SHEET UC-4, UC-5, & UC-6)



PW200
(SEE SHEET UC-4)



PW300
(SEE SHEET UC-4 & UC-5)

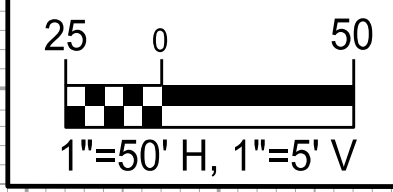


PW400
(SEE SHEET UC-5)

NOTE:
 TO TIE IN EACH END OF
 PROP. 16" D.I. WATER MAIN
 TO EX. 16" PCCP WATER MAIN,
 USE SPECIALTY ADAPTER (AS
 SHOWN ON THOMPSON PIPE GROUP
 DWG. NO. 12345A FOR 16"-36" L301
 STANDARD JOINT X M.J.S. ADAPTER,
 OR APPROVED EQUAL) TO BE PAID FOR
 WITH DUCTILE IRON WATER PIPE
 FITTINGS ITEM.

5/14/99
 810
 800
 790
 780
 770
 26+00 27+00 28+00 29+00 30+00 31+00 32+00 33+00 34+00 35+00 36+00 37+00 37+53
 800
 790
 780
 770
 0+00 1+00 1+84
 810
 800
 790
 780
 770
 0+00 1+00 2+00 3+00 4+00 4+85
 810
 800
 790
 780
 770
 0+00 1+00

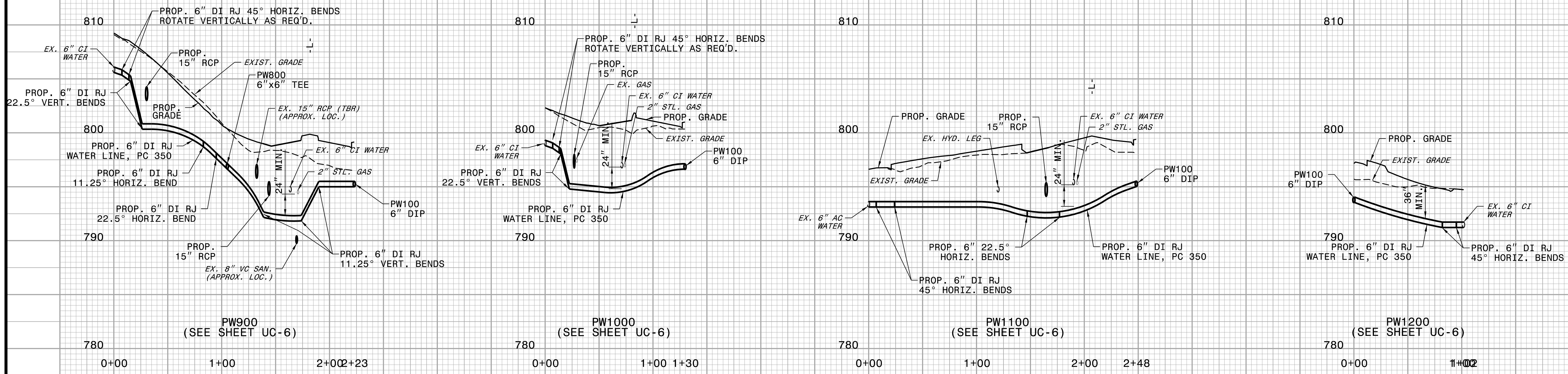
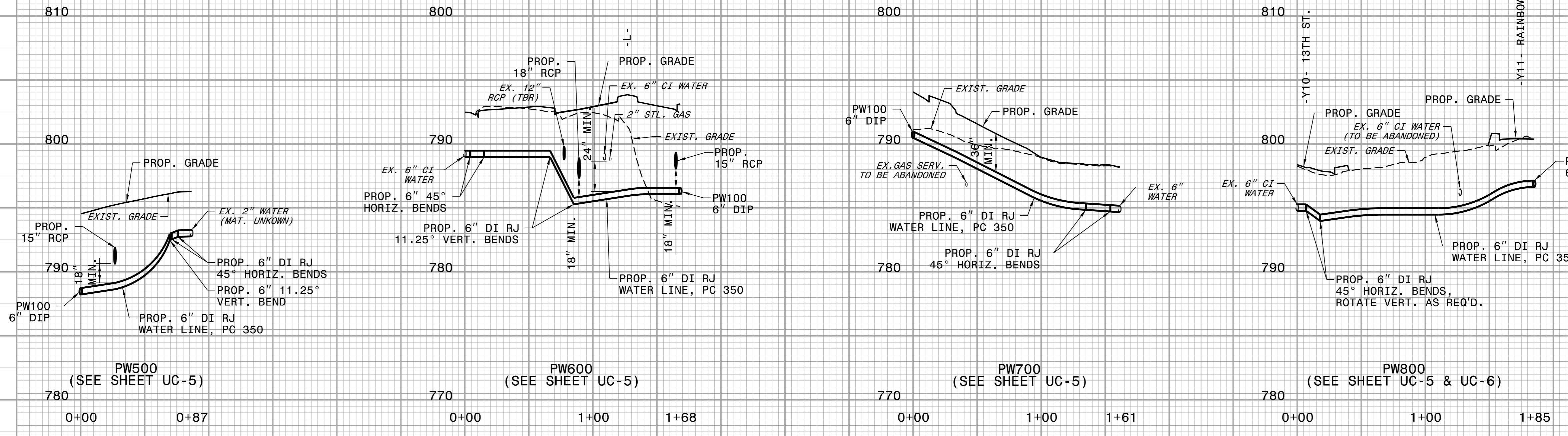
5/14/23



PROJECT REFERENCE NO.	SHEET NO.
U-5757	UC-9
DESIGNED BY: DMP	
DRAWN BY: DMP	
CHECKED BY: DMP	
APPROVED BY:	
REVISED:	
NORTH CAROLINA DEPARTMENT OF TRANSPORTATION	
UTILITIES ENGINEERING SEC. PHONE: (919) 707-6690 FAX: (919) 250-4151	4/19/2024 UTILITY CONSTRUCTION PLANS ONLY

UTILITY CONSTRUCTION

DOCUMENT NOT CONSIDERED FINAL UNLESS ALL SIGNATURES COMPLETED





PROJECT REFERENCE NO. U-5757	SHEET NO. UC-10
DESIGNED BY: DMP	
DRAWN BY: DMP	
CHECKED BY: DMP	
APPROVED BY:	
REVISED:	
NORTH CAROLINA DEPARTMENT OF TRANSPORTATION UTILITIES ENGINEERING SEC. PHONE: (919) 707-6690 FAX: (919) 250-4151	
UTILITY CONSTRUCTION PLANS ONLY	

UTILITY CONSTRUCTION

**DOCUMENT NOT CONSIDERED FINAL
UNLESS ALL SIGNATURES COMPLETED**

