

Location and Surveys

PROJECT SURVEYOR



DOCUMENT NOT CONSIDERED FINAL UNLESS ALL SIGNATURES COMPLETED

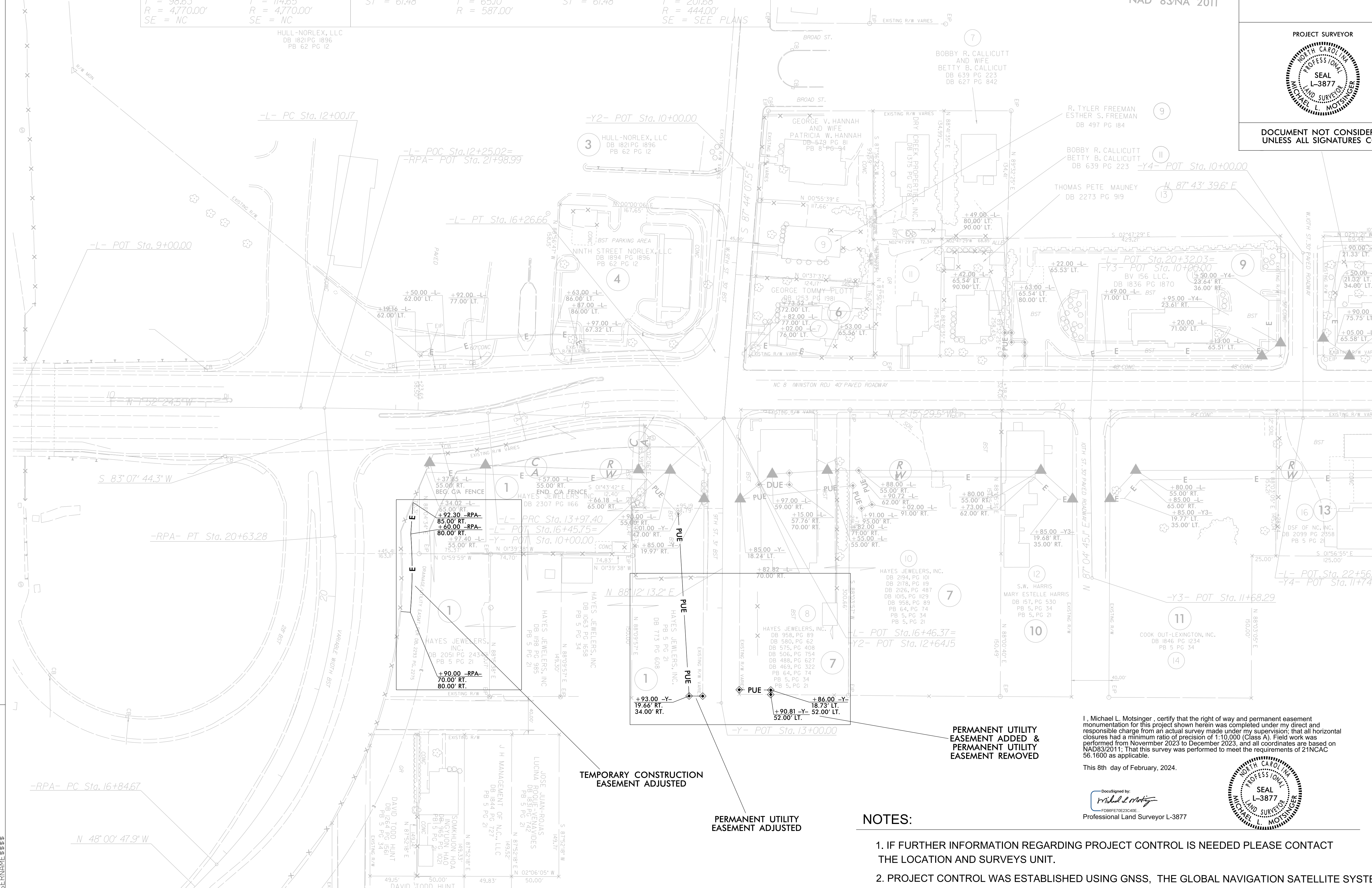
-L-		-RPA-		-L-		-RPA-	
PI Sta 12+98.80	PI Sta 15+12.06	PIs Sta 11+97.82	PI Sta 13+24.10	PIs Sta 14+50.14	PI Sta 18+86.34		
$\Delta = 2' 22'' 08.7''$ (RT)	$\Delta = 2' 45'' 13.7''$ (LT)	$\Theta_s = 8' 58'' 47.7''$	$\Delta = 12' 39'' 23.3''$ (RT)	$\Theta_s = 8' 58'' 47.7''$	$\Delta = 48' 51'' 27.8''$ (LT)		
D = 1' 12' 04.2"	D = 1' 12' 04.2"	Ls = 184.00'	D = 9' 45' 38.8"	Ls = 184.00'	D = 12' 54' 16.0"		
L = 197.23'	L = 229.26'	LT = 122.82'	L = 129.67'	LT = 122.82'	L = 378.61'		
T = 98.63'	T = 114.65'	ST = 61.48'	T = 65.10'	ST = 61.48'	T = 201.68'		
R = 4,770.00'	R = 4,770.00'		R = 587.00'		R = 444.00'		
SE = NC	SE = NC				SE = SEE PLANS		

DAVIDSON COUNTY SHELTERED WORKSHOP, INC.



REVISIONS

MATCHLINE -L- STA. 23 + 50.00 SEE SHEET 5



PERMANENT UTILITY EASEMENT ADDED & PERMANENT UTILITY EASEMENT REMOVED

TEMPORARY CONSTRUCTION EASEMENT ADJUSTED

PERMANENT UTILITY EASEMENT ADJUSTED

I, Michael L. Molsinger, certify that the right of way and permanent easement monumentation for this project shown herein was completed under my direct and responsible charge from an actual survey made under my supervision; that all horizontal closures had a minimum ratio of precision of 1:10,000 (Class A). Field work was performed from November 2023 to December 2023, and all coordinates are based on NAD83/2011. That this survey was performed to meet the requirements of 21NCAC 56.1600 as applicable.

This 8th day of February, 2024.

DocuSigned by: Michael L. Molsinger Professional Land Surveyor L-3877



NOTES:

1. IF FURTHER INFORMATION REGARDING PROJECT CONTROL IS NEEDED PLEASE CONTACT THE LOCATION AND SURVEYS UNIT.
2. PROJECT CONTROL WAS ESTABLISHED USING GNSS, THE GLOBAL NAVIGATION SATELLITE SYSTEM.
3. RIGHT OF WAY MONUMENTATION ESTABLISHED \_\_\_\_\_ TO \_\_\_\_\_.