

REFERENCE: BR-0139

PROJECT: 67139

STATE OF NORTH CAROLINA
DEPARTMENT OF TRANSPORTATION
DIVISION OF HIGHWAYS
GEOTECHNICAL ENGINEERING UNIT

STRUCTURE
SUBSURFACE INVESTIGATION

COUNTY BRUNSWICK
PROJECT DESCRIPTION BRIDGE ON NC 133
(RIVER ROAD) OVER SAND HILL CREEK
AT -L- STA. 20+56

CONTENTS

SHEET NO.	DESCRIPTION
1	TITLE SHEET
2	LEGEND (SOIL & ROCK)
3	SITE PLAN
4	PROFILE
5-12	BORE LOGS
13	SOIL TEST RESULTS
14	SITE PHOTOGRAPHS

STATE	STATE PROJECT REFERENCE NO.	SHEET NO.	TOTAL SHEETS
N.C.	BR-0139	1	14

CAUTION NOTICE

THE SUBSURFACE INFORMATION AND THE SUBSURFACE INVESTIGATION ON WHICH IT IS BASED WERE MADE FOR THE PURPOSE OF STUDY, PLANNING AND DESIGN, AND NOT FOR CONSTRUCTION OR PAY PURPOSES. THE VARIOUS FIELD BORING LOGS, ROCK CORES AND SOIL TEST DATA AVAILABLE MAY BE REVIEWED OR INSPECTED IN RALEIGH BY CONTACTING THE N. C. DEPARTMENT OF TRANSPORTATION, GEOTECHNICAL ENGINEERING UNIT AT (919) 707-6850. THE SUBSURFACE PLANS AND REPORTS, FIELD BORING LOGS, ROCK CORES AND SOIL TEST DATA ARE NOT PART OF THE CONTRACT.

GENERAL SOIL AND ROCK STRATA DESCRIPTIONS AND INDICATED BOUNDARIES ARE BASED ON A GEOTECHNICAL INTERPRETATION OF ALL AVAILABLE SUBSURFACE DATA AND MAY NOT NECESSARILY REFLECT THE ACTUAL SUBSURFACE CONDITIONS BETWEEN BORINGS OR BETWEEN SAMPLED STRATA WITHIN THE BOREHOLE. THE LABORATORY SAMPLE DATA AND THE IN SITU (IN-PLACE) TEST DATA CAN BE RELIED ON ONLY TO THE DEGREE OF RELIABILITY INHERENT IN THE STANDARD TEST METHOD. THE OBSERVED WATER LEVELS OR SOIL MOISTURE CONDITIONS INDICATED IN THE SUBSURFACE INVESTIGATIONS ARE AS RECORDED AT THE TIME OF THE INVESTIGATION. THESE WATER LEVELS OR SOIL MOISTURE CONDITIONS MAY VARY CONSIDERABLY WITH TIME ACCORDING TO CLIMATIC CONDITIONS INCLUDING TEMPERATURES, PRECIPITATION AND WIND, AS WELL AS OTHER NON-CLIMATIC FACTORS.

THE BIDDER OR CONTRACTOR IS CAUTIONED THAT DETAILS SHOWN ON THE SUBSURFACE PLANS ARE PRELIMINARY ONLY AND IN MANY CASES THE FINAL DESIGN DETAILS ARE DIFFERENT. FOR BIDDING AND CONSTRUCTION PURPOSES, REFER TO THE CONSTRUCTION PLANS AND DOCUMENTS FOR FINAL DESIGN INFORMATION ON THIS PROJECT. THE DEPARTMENT DOES NOT WARRANT OR GUARANTEE THE SUFFICIENCY OR ACCURACY OF THE INVESTIGATION MADE, NOR THE INTERPRETATIONS MADE, OR OPINION OF THE DEPARTMENT AS TO THE TYPE OF MATERIALS AND CONDITIONS TO BE ENCOUNTERED. THE BIDDER OR CONTRACTOR IS CAUTIONED TO PERFORM INDEPENDENT SUBSURFACE INVESTIGATIONS AND MAKE INTERPRETATIONS AS NECESSARY TO CONFIRM CONDITIONS ENCOUNTERED ON THE PROJECT. THE CONTRACTOR SHALL HAVE NO CLAIM FOR ADDITIONAL COMPENSATION OR FOR AN EXTENSION OF TIME FOR ANY REASON RESULTING FROM THE ACTUAL CONDITIONS ENCOUNTERED AT THE SITE DIFFERING FROM THOSE INDICATED IN THE SUBSURFACE INFORMATION.

- NOTES:
- THE INFORMATION CONTAINED HEREIN IS NOT IMPLIED OR GUARANTEED BY THE N. C. DEPARTMENT OF TRANSPORTATION AS ACCURATE NOR IS IT CONSIDERED PART OF THE PLANS, SPECIFICATIONS OR CONTRACT FOR THE PROJECT.
 - BY HAVING REQUESTED THIS INFORMATION, THE CONTRACTOR SPECIFICALLY WAIVES ANY CLAIMS FOR INCREASED COMPENSATION OR EXTENSION OF TIME BASED ON DIFFERENCES BETWEEN THE CONDITIONS INDICATED HEREIN AND THE ACTUAL CONDITIONS AT THE PROJECT SITE.

PERSONNEL

J. HOLLAND

J. ROSE

BRIDGER DRILLING

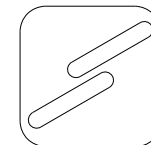
INVESTIGATED BY J. CRENSHAW

DRAWN BY J. HOLLAND

CHECKED BY J. WESSELL

SUBMITTED BY SCHNABEL ENG.

DATE OCTOBER 2022



Schnabel
ENGINEERING



DocuSigned by:

Jared K. Crenshaw

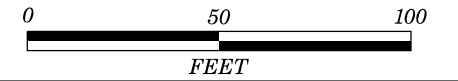
02/26/2023

F325B40D4C25483
SIGNATURE

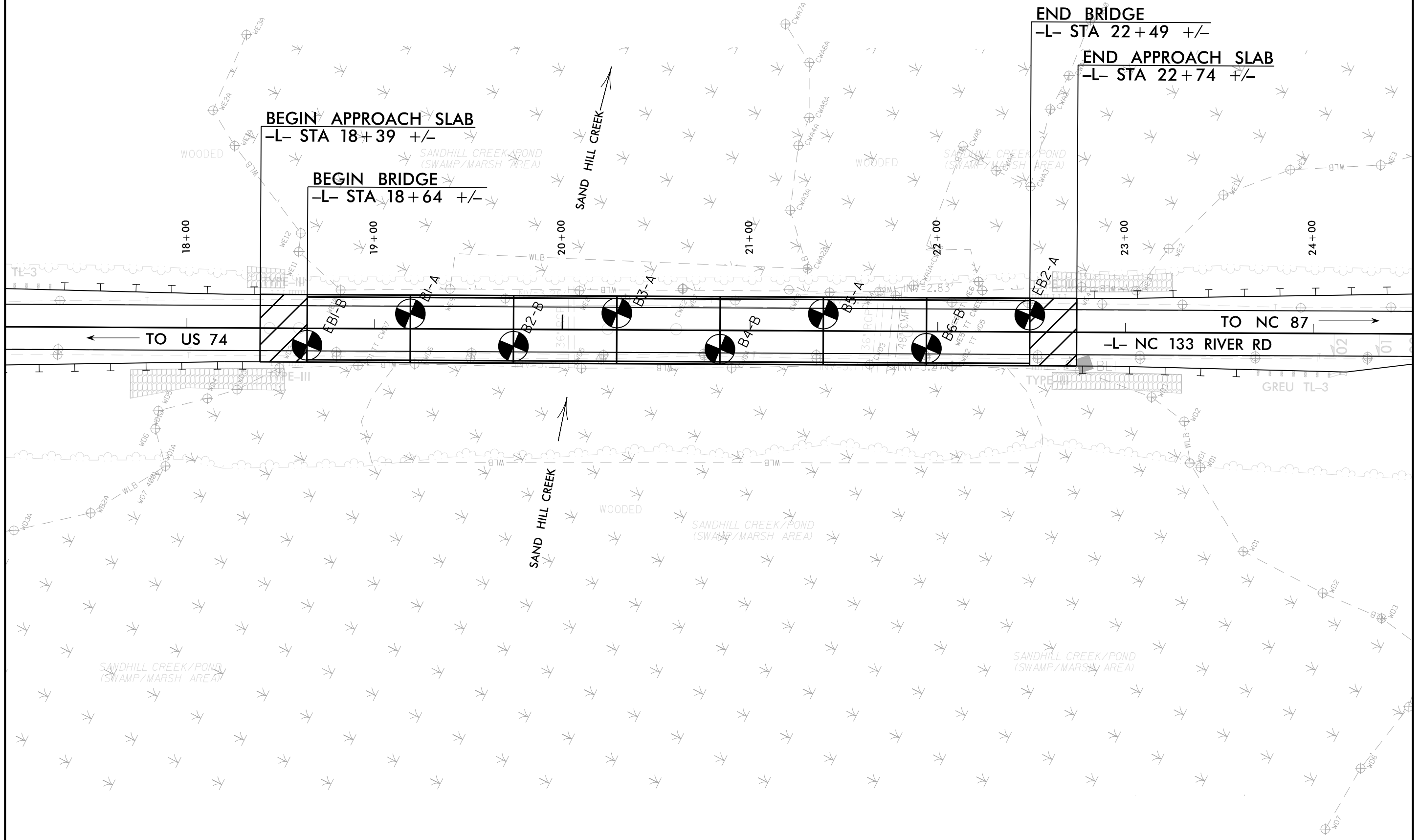
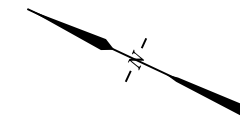
DATE

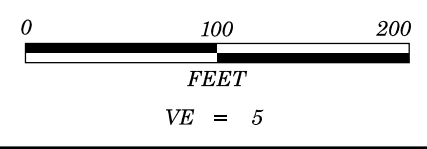
**DOCUMENT NOT CONSIDERED FINAL
UNLESS ALL SIGNATURES COMPLETED**

SITE PLAN



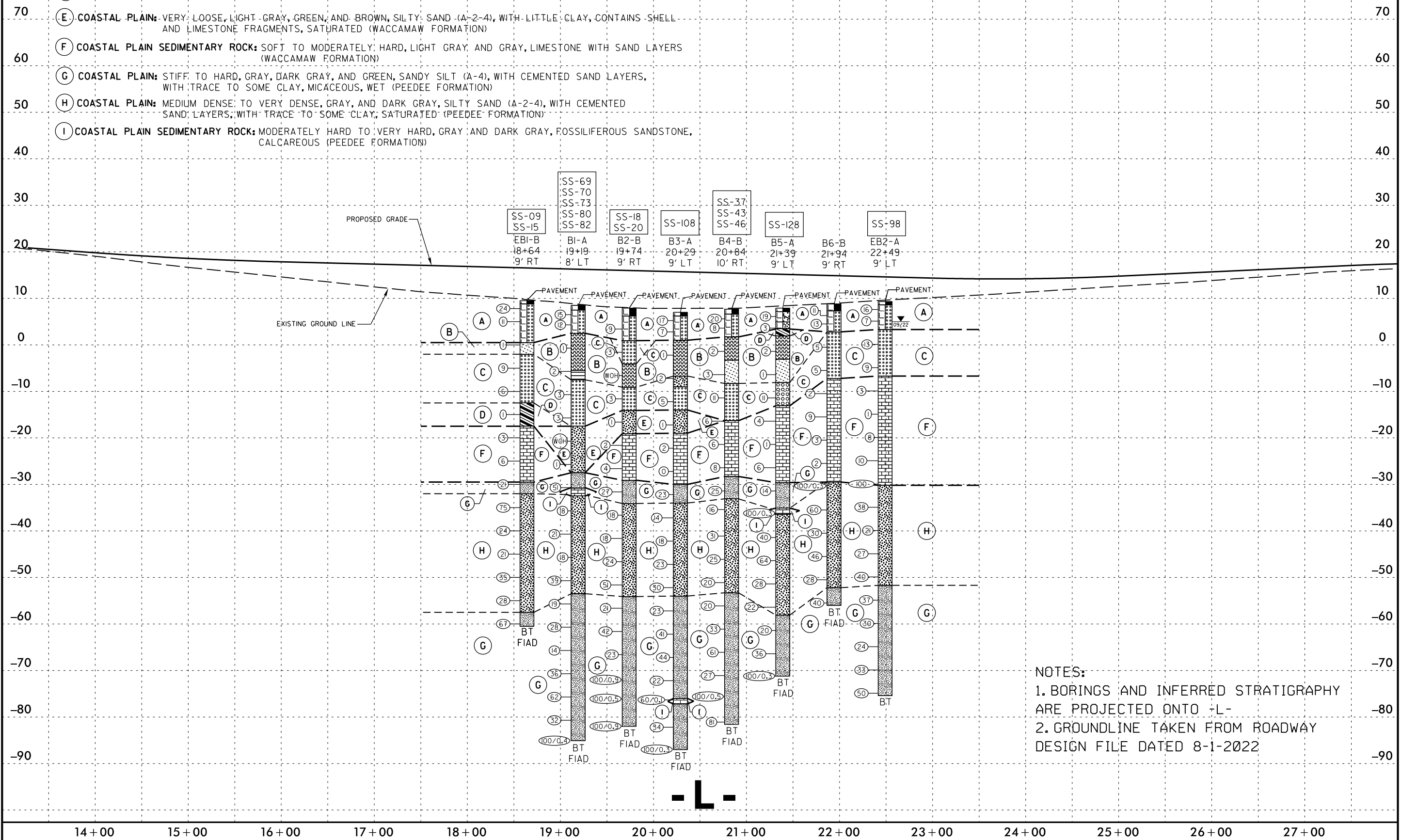
SKEW = 90°





PROJECT REFERENCE NO.	SHEET NO.
BR-0139	4
PROFILE - BRIDGE ON NC 133 BORINGS PROJECTED ONTO -L-	

- (A) ROADWAY EMBANKMENT: VERY LOOSE TO MEDIUM DENSE, LIGHT BROWN, BROWN, LIGHT GRAY, DARK GRAY, AND TAN, SAND, SILTY SAND, AND CLAYEY SAND (A-3, A-2-4, A-2-6), WITH TRACE CLAY AND ORGANICS, MOIST TO SATURATED
- (B) ALLUVIAL: VERY SOFT TO SOFT, DARK BROWN AND GRAY, MUCK, SANDY MUCK, AND SOFT, DARK BROWN, CLAY WITH LITTLE ORGANICS, CONTAINS WOOD FRAGMENTS, AND LOOSE TO MEDIUM DENSE, DARK BROWN AND GRAY, SAND WITH LITTLE TO MODERATE ORGANICS, SATURATED
- (C) ALLUVIAL: VERY LOOSE TO MEDIUM DENSE, LIGHT BROWN, DARK BROWN, DARK GRAY, GRAY, TAN, AND ORANGE, SAND AND SILTY SAND (A-1-b, A-3, A-2-4), WITH TRACE ORGANICS, CONTAINS GRAVEL, MOIST TO SATURATED
- (D) ALLUVIAL: VERY SOFT TO SOFT, LIGHT BROWN, DARK BROWN, GRAY AND ORANGE, SANDY CLAY (A-6), WET
- (E) COASTAL PLAIN: VERY LOOSE, LIGHT GRAY, GREEN, AND BROWN, SILTY SAND (A-2-4), WITH LITTLE CLAY, CONTAINS SHELL AND LIMESTONE FRAGMENTS, SATURATED (WACCAMAW FORMATION)
- (F) COASTAL PLAIN SEDIMENTARY ROCK: SOFT TO MODERATELY HARD, LIGHT GRAY AND GRAY, LIMESTONE WITH SAND LAYERS (WACCAMAW FORMATION)
- (G) COASTAL PLAIN: STIFF TO HARD, GRAY, DARK GRAY, AND GREEN, SANDY SILT (A-4), WITH CEMENTED SAND LAYERS, WITH TRACE TO SOME CLAY, MICACEOUS, WET (PEEDEE FORMATION)
- (H) COASTAL PLAIN: MEDIUM DENSE TO VERY DENSE, GRAY, AND DARK GRAY, SILTY SAND (A-2-4), WITH CEMENTED SAND LAYERS, WITH TRACE TO SOME CLAY, SATURATED (PEEDEE FORMATION)
- (I) COASTAL PLAIN SEDIMENTARY ROCK: MODERATELY HARD TO VERY HARD, GRAY AND DARK GRAY, FOSSILIFEROUS SANDSTONE, CALCAREOUS (PEEDEE FORMATION)

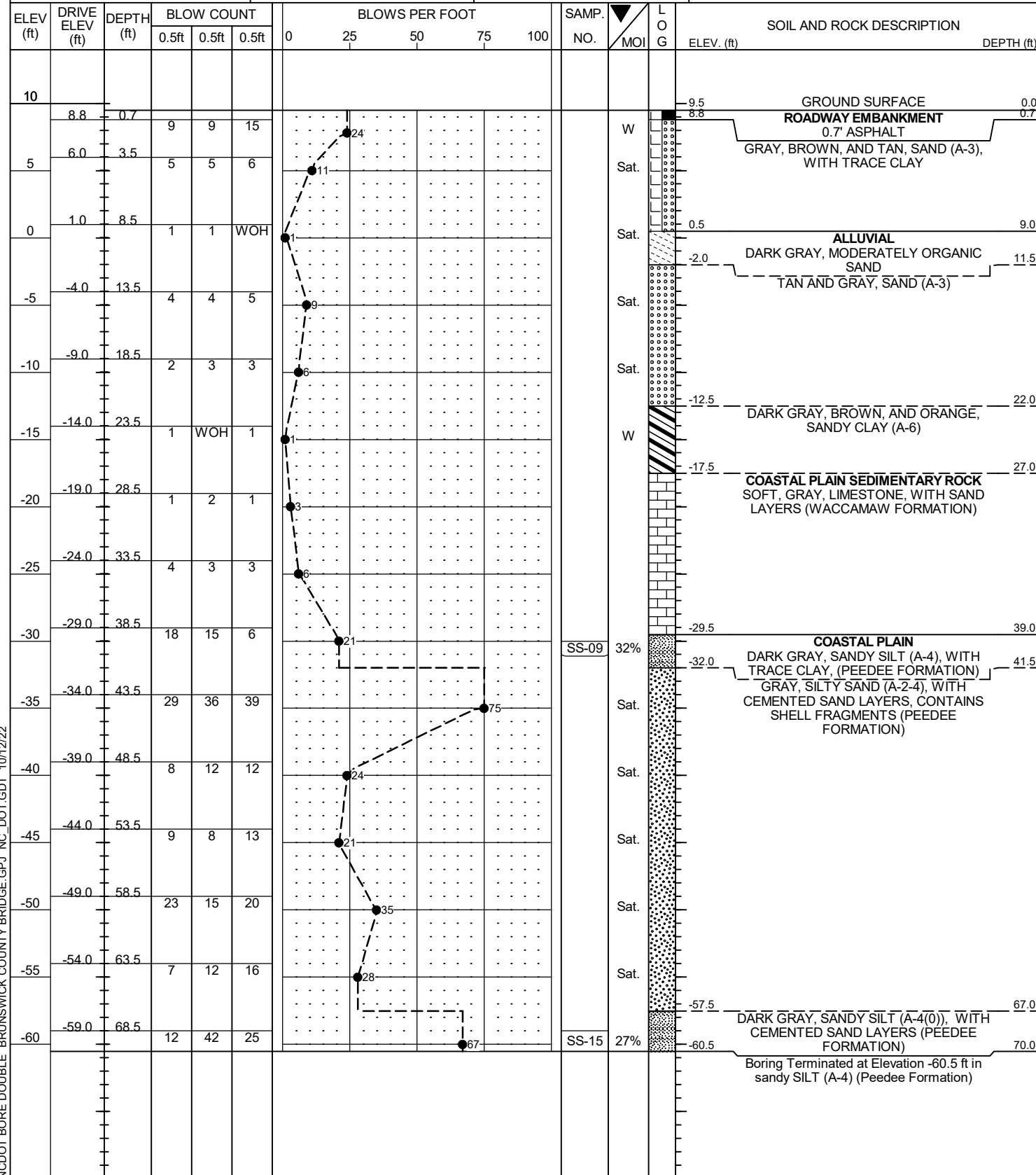


NOTES:
 1. BORINGS AND INFERRED STRATIGRAPHY ARE PROJECTED ONTO -L-
 2. GROUNDLINE TAKEN FROM ROADWAY DESIGN FILE DATED 8-1-2022

GEOTECHNICAL BORING REPORT

BORE LOG

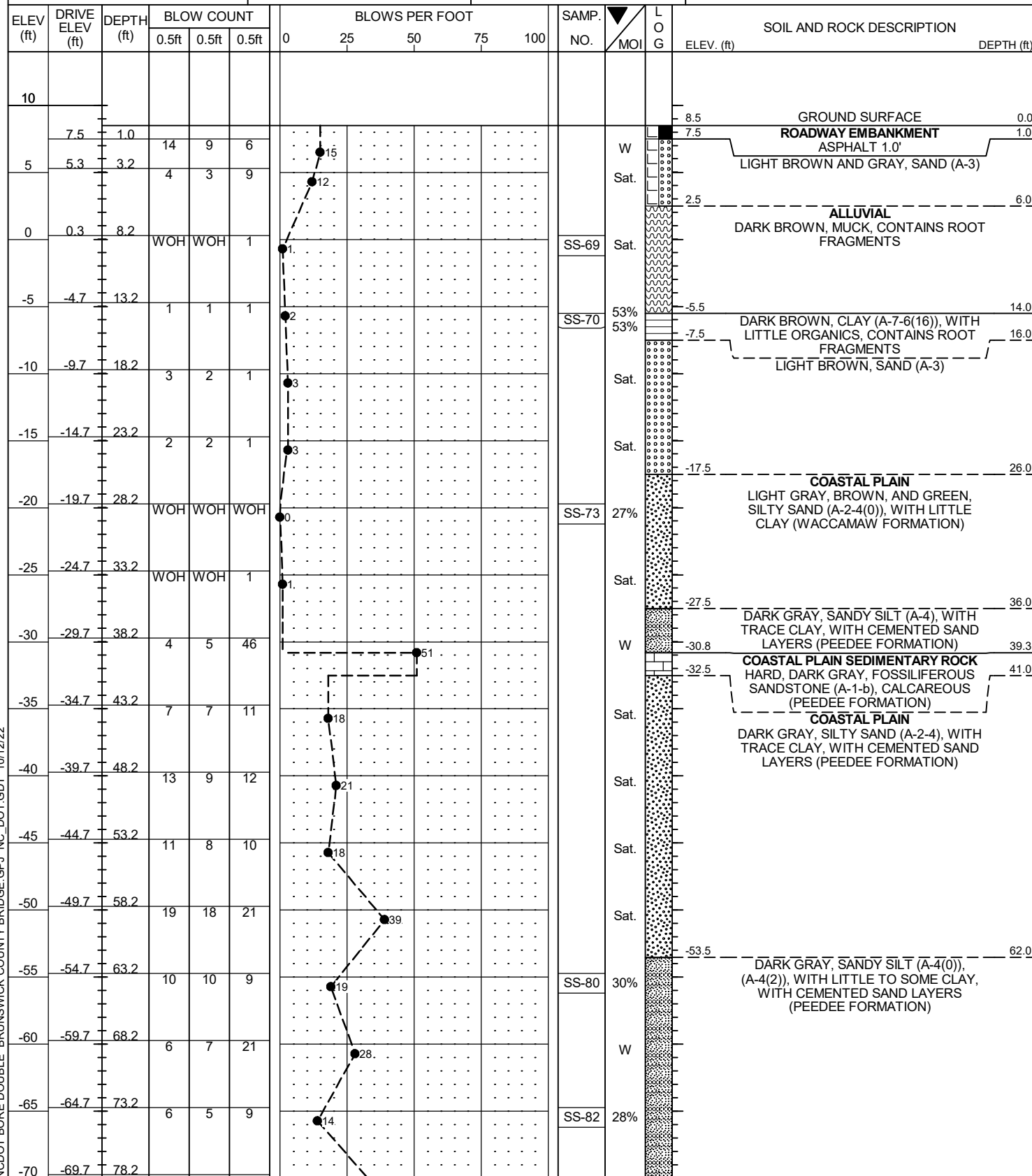
WBS 67139.1.1	TIP BR-0139	COUNTY BRUNSWICK	GEOLOGIST J. Holland
SITE DESCRIPTION BRIDGE ON NC 133 (RIVER ROAD) OVER SAND HILL CREEK			GROUND WTR (ft)
BORING NO. EB1-B	STATION 18+64	OFFSET 9 ft RT	ALIGNMENT -L-
COLLAR ELEV. 9.5 ft	TOTAL DEPTH 70.0 ft	NORTHING 129,252	EASTING 2,311,907
DRILL RIG/HAMMER EFF./DATE BRI1424 CME-45C 83% 08/24/2022		DRILL METHOD Mud Rotary	HAMMER TYPE Automatic
DRILLER M. Radford	START DATE 08/25/22	COMP. DATE 08/25/22	SURFACE WATER DEPTH N/A



GEOTECHNICAL BORING REPORT

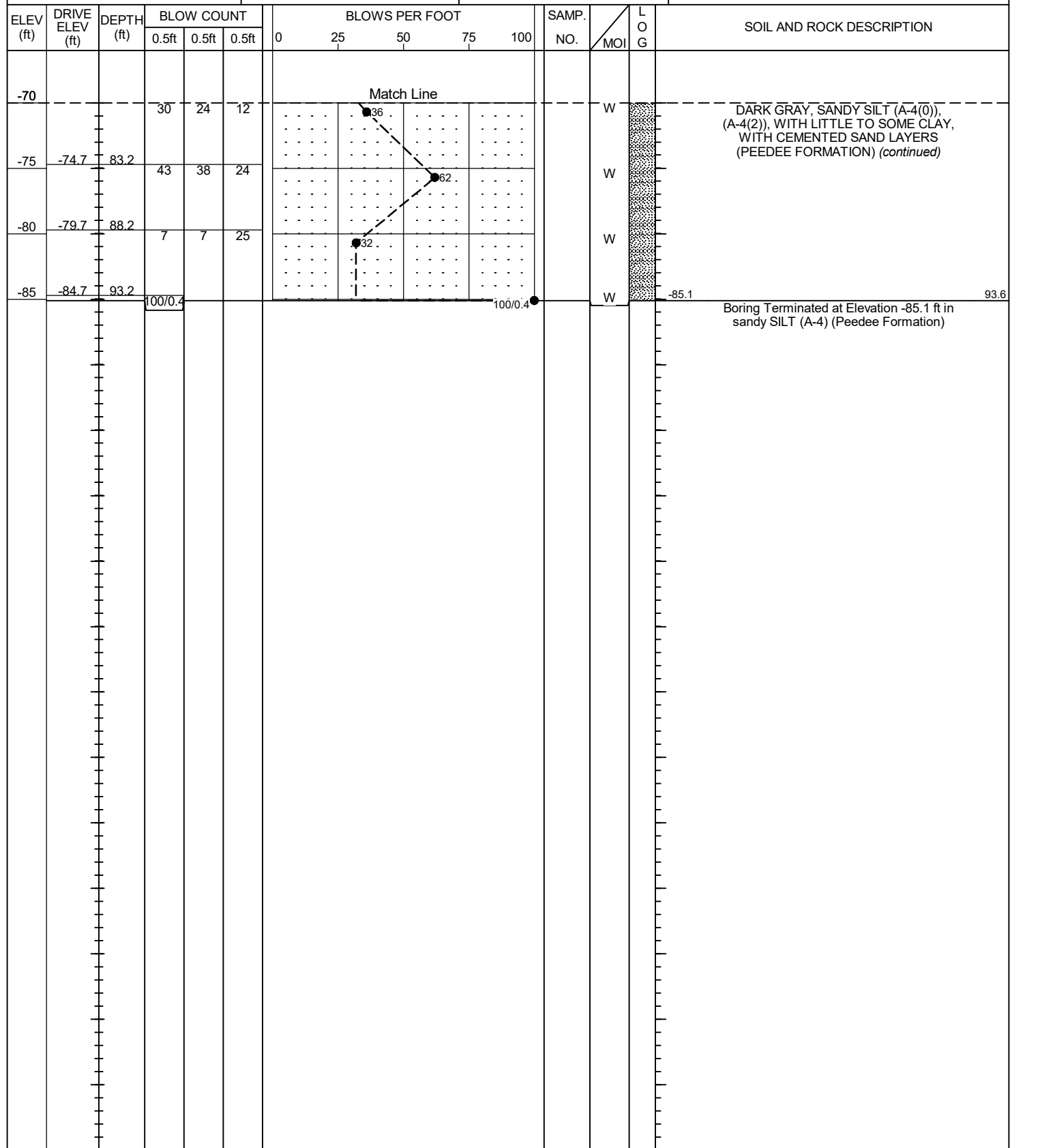
BORE LOG

WBS 67139.1.1	TIP BR-0139	COUNTY BRUNSWICK	GEOLOGIST J. Rose
SITE DESCRIPTION BRIDGE ON NC 133 (RIVER ROAD) OVER SAND HILL CREEK			GROUND WTR (ft)
BORING NO. B1-A	STATION 19+19	OFFSET 8 ft LT	ALIGNMENT -L-
COLLAR ELEV. 8.5 ft	TOTAL DEPTH 93.6 ft	NORTHING 129,211	EASTING 2,311,947
DRILL RIG/HAMMER EFF./DATE BR11424 CME-45C 83% 08/24/2022		DRILL METHOD Mud Rotary	HAMMER TYPE Automatic
DRILLER M. Radford	START DATE 09/02/22	COMP. DATE 09/02/22	SURFACE WATER DEPTH N/A



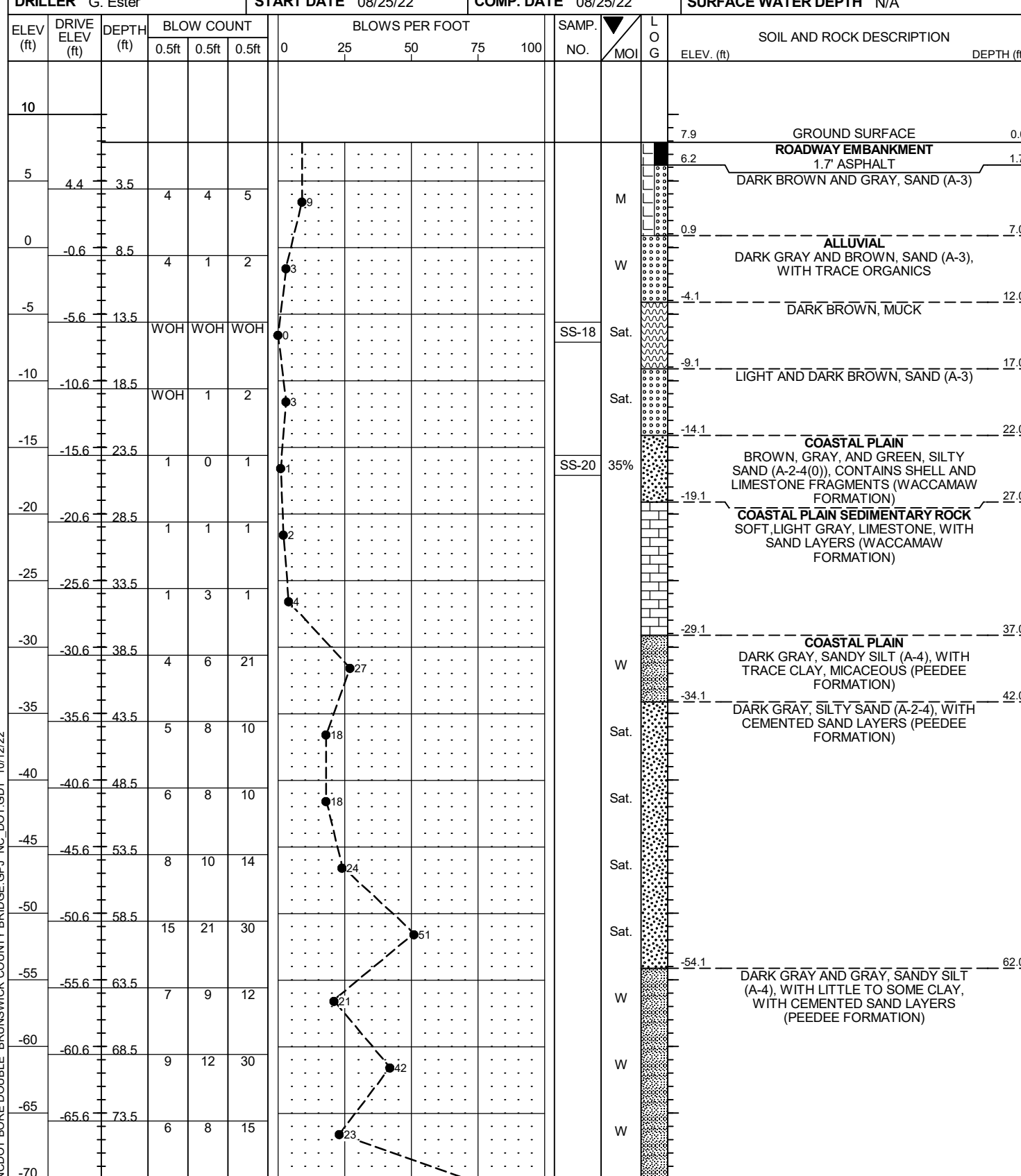
NCDOT BORE DOUBLE BRUNSWICK COUNTY BRIDGE.GPJ NC_DOT.GDT 10/12/22

WBS 67139.1.1	TIP BR-0139	COUNTY BRUNSWICK	GEOLOGIST J. Rose
SITE DESCRIPTION BRIDGE ON NC 133 (RIVER ROAD) OVER SAND HILL CREEK			GROUND WTR (ft)
BORING NO. B1-A	STATION 19+19	OFFSET 8 ft LT	ALIGNMENT -L-
COLLAR ELEV. 8.5 ft	TOTAL DEPTH 93.6 ft	NORTHING 129,211	EASTING 2,311,947
DRILL RIG/HAMMER EFF./DATE BR11424 CME-45C 83% 08/24/2022		DRILL METHOD Mud Rotary	HAMMER TYPE Automatic
DRILLER M. Radford	START DATE 09/02/22	COMP. DATE 09/02/22	SURFACE WATER DEPTH N/A

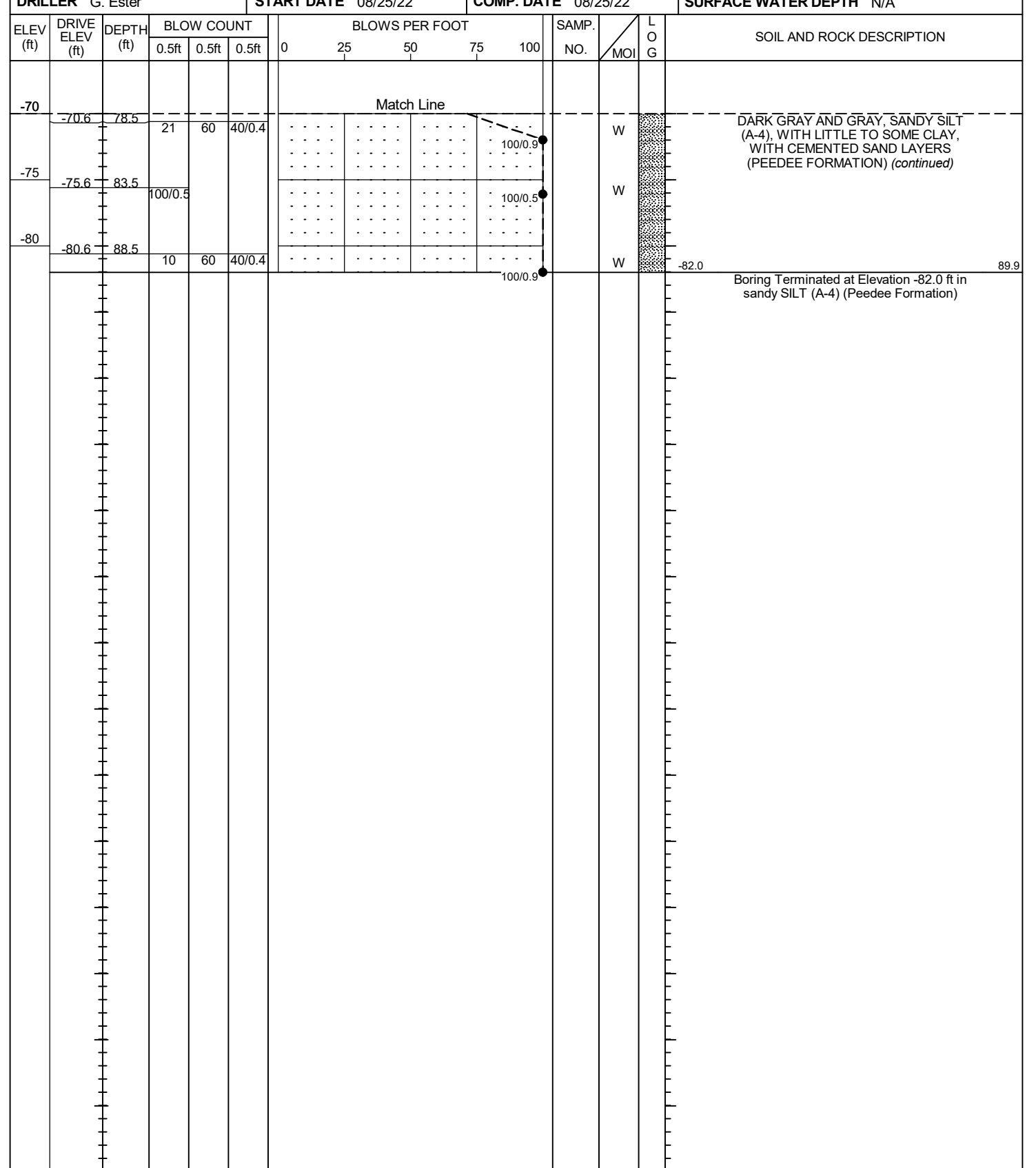


GEOTECHNICAL BORING REPORT
BORE LOG

WBS 67139.1.1	TIP BR-0139	COUNTY BRUNSWICK	GEOLOGIST J. Rose	GROUND WTR (ft)	
SITE DESCRIPTION BRIDGE ON NC 133 (RIVER ROAD) OVER SAND HILL CREEK				0 HR.	N/A
BORING NO. B2-B	STATION 19+74	OFFSET 9 ft RT	ALIGNMENT -L-	24 HR. FIAD	
COLLAR ELEV. 7.9 ft	TOTAL DEPTH 89.9 ft	NORTHING 129,154	EASTING 2,311,956		
DRILL RIG/HAMMER EFF./DATE BRI5104 CME-45C 75% 03/30/2022		DRILL METHOD Mud Rotary	HAMMER TYPE Automatic		
DRILLER G. Ester	START DATE 08/25/22	COMP. DATE 08/25/22	SURFACE WATER DEPTH N/A		



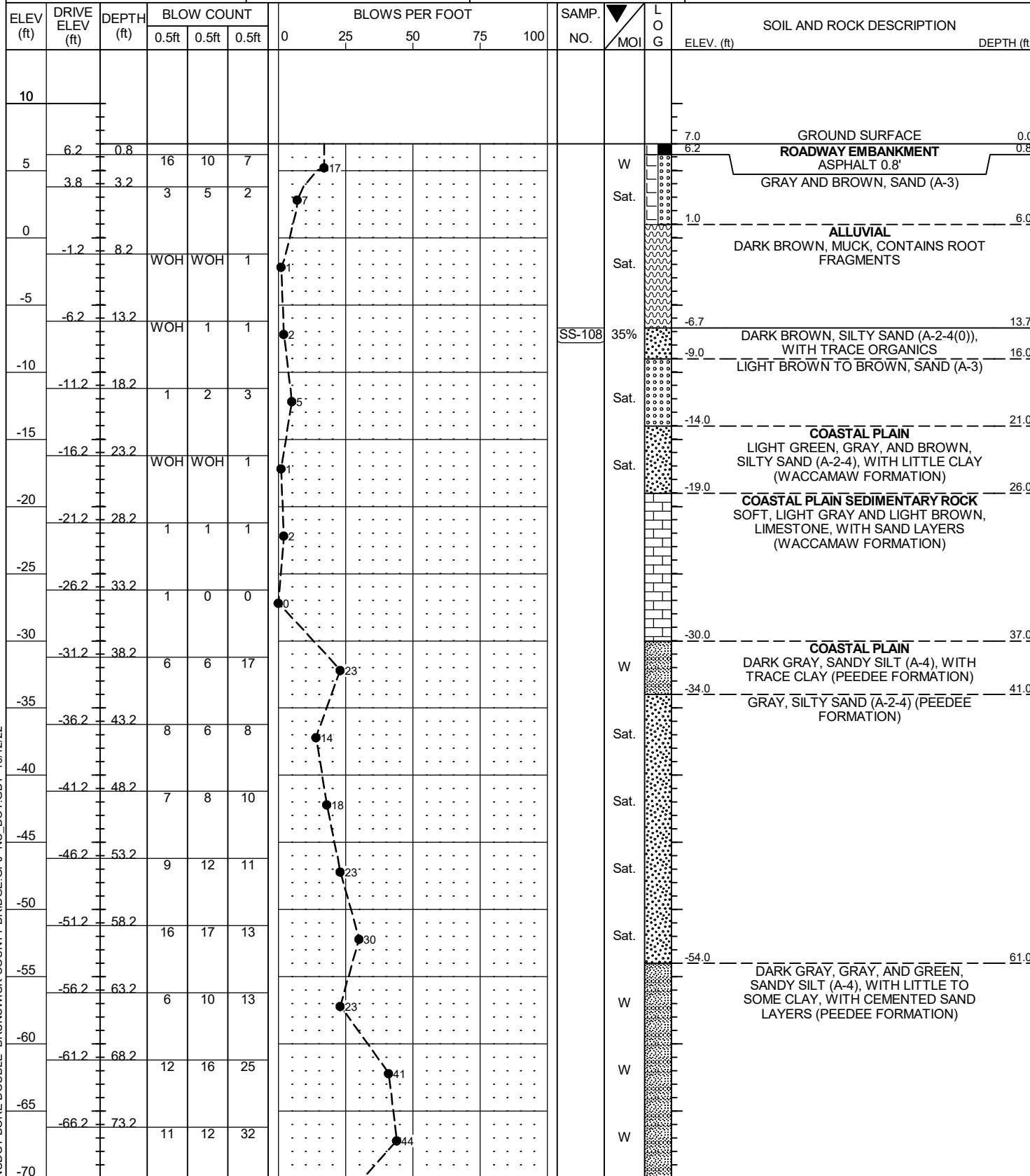
WBS 67139.1.1	TIP BR-0139	COUNTY BRUNSWICK	GEOLOGIST J. Rose	GROUND WTR (ft)	
SITE DESCRIPTION BRIDGE ON NC 133 (RIVER ROAD) OVER SAND HILL CREEK				0 HR.	N/A
BORING NO. B2-B	STATION 19+74	OFFSET 9 ft RT	ALIGNMENT -L-	24 HR. FIAD	
COLLAR ELEV. 7.9 ft	TOTAL DEPTH 89.9 ft	NORTHING 129,154	EASTING 2,311,956		
DRILL RIG/HAMMER EFF./DATE BRI5104 CME-45C 75% 03/30/2022		DRILL METHOD Mud Rotary	HAMMER TYPE Automatic		
DRILLER G. Ester	START DATE 08/25/22	COMP. DATE 08/25/22	SURFACE WATER DEPTH N/A		



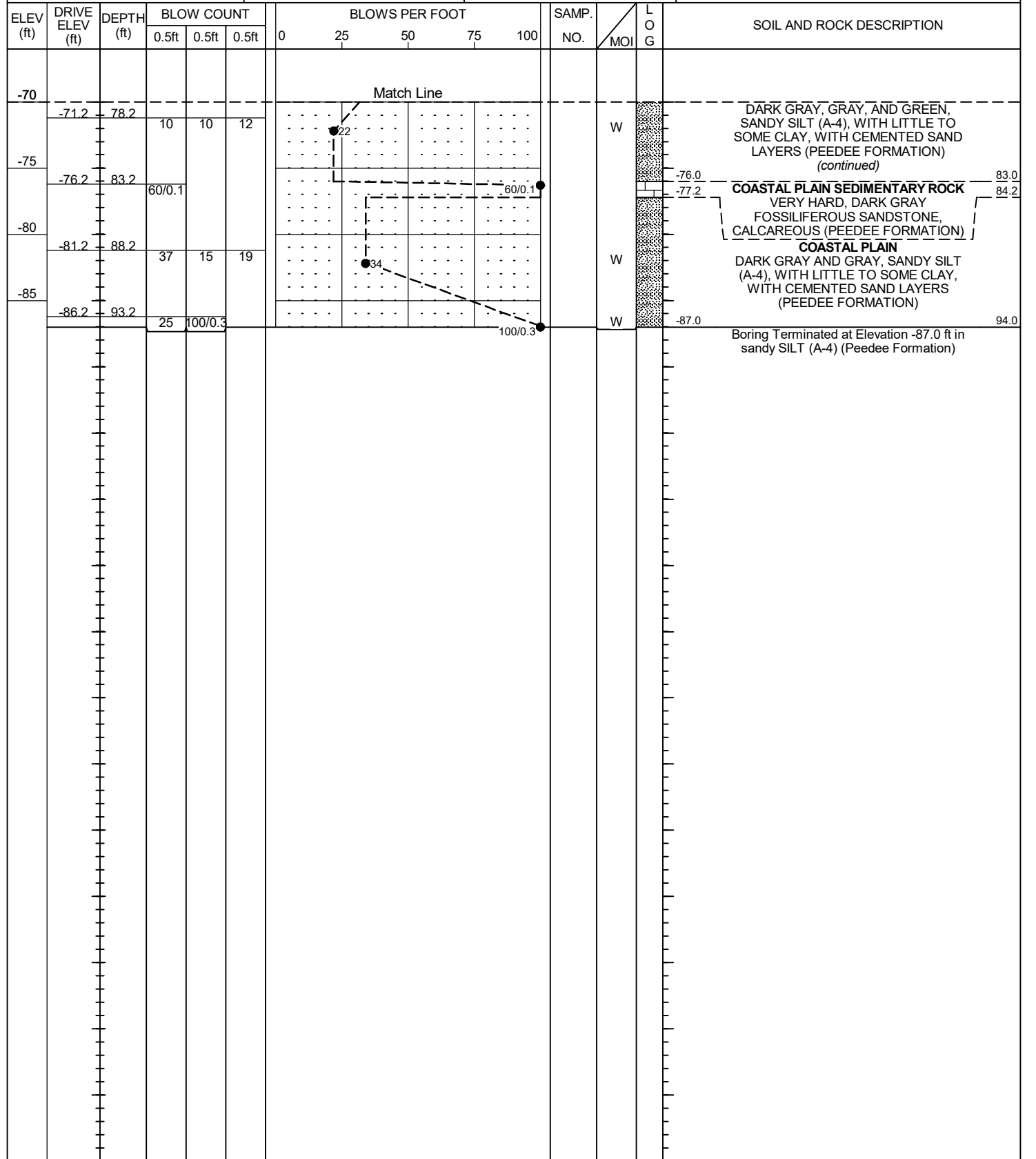
GEOTECHNICAL BORING REPORT

BORE LOG

WBS 67139.1.1		TIP BR-0139		COUNTY BRUNSWICK		GEOLOGIST J. Rose	
SITE DESCRIPTION BRIDGE ON NC 133 (RIVER ROAD) OVER SAND HILL CREEK							GROUND WTR (ft)
BORING NO. B3-A		STATION 20+29		OFFSET 9 ft LT		ALIGNMENT -L-	
COLLAR ELEV. 7.0 ft		TOTAL DEPTH 94.0 ft		NORTHING 129,113		EASTING 2,311,997	
DRILL RIG/HAMMER EFF./DATE BRI1424 CME-45C 83% 08/24/2022		DRILL METHOD Mud Rotary		HAMMER TYPE Automatic			
DRILLER M. Radford		START DATE 09/07/22		COMP. DATE 09/07/22		SURFACE WATER DEPTH N/A	



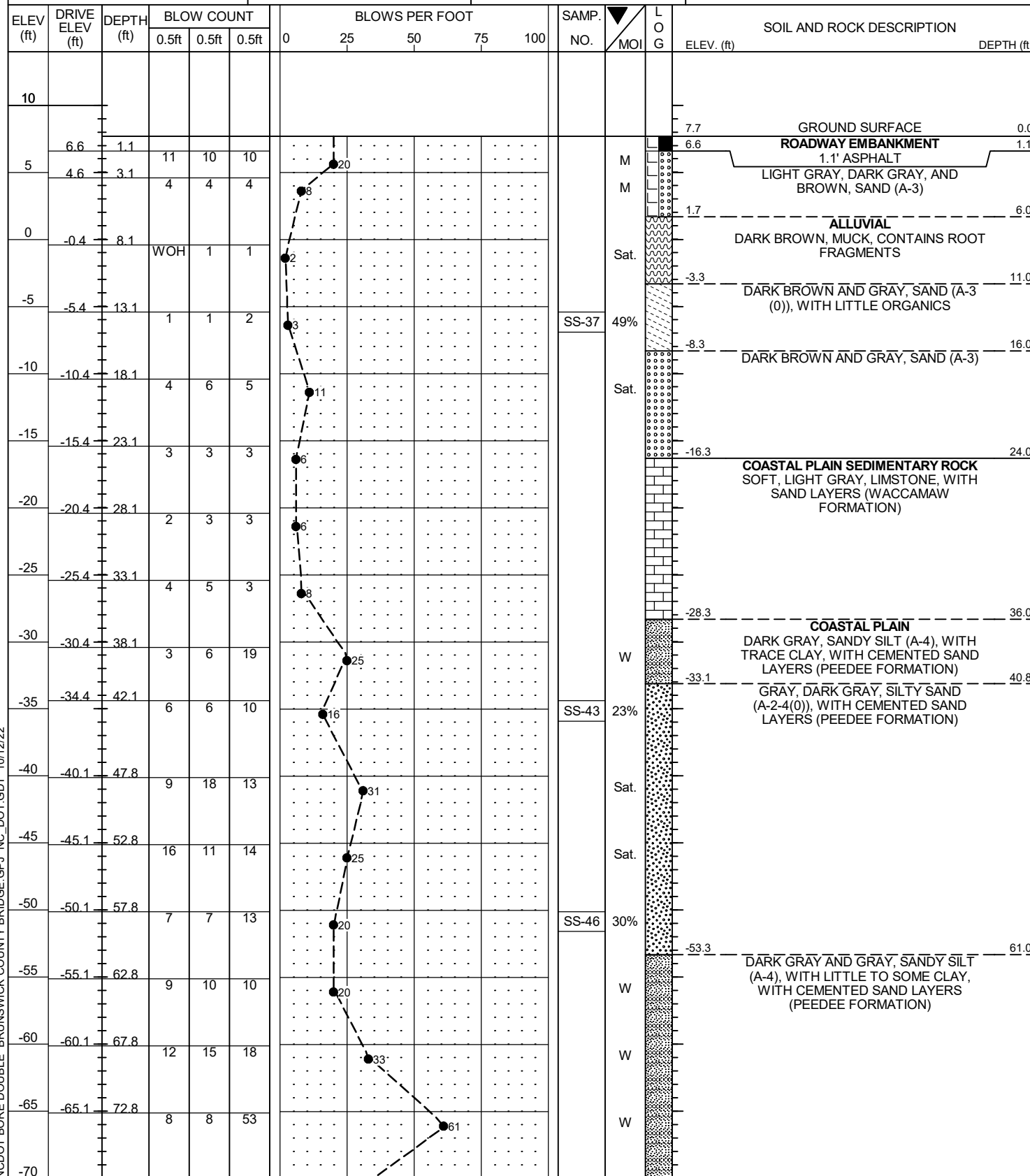
WBS 67139.1.1		TIP BR-0139		COUNTY BRUNSWICK		GEOLOGIST J. Rose	
SITE DESCRIPTION BRIDGE ON NC 133 (RIVER ROAD) OVER SAND HILL CREEK							GROUND WTR (ft)
BORING NO. B3-A		STATION 20+29		OFFSET 9 ft LT		ALIGNMENT -L-	
COLLAR ELEV. 7.0 ft		TOTAL DEPTH 94.0 ft		NORTHING 129,113		EASTING 2,311,997	
DRILL RIG/HAMMER EFF./DATE BRI1424 CME-45C 83% 08/24/2022		DRILL METHOD Mud Rotary		HAMMER TYPE Automatic			
DRILLER M. Radford		START DATE 09/07/22		COMP. DATE 09/07/22		SURFACE WATER DEPTH N/A	



NCDOT BORE DOUBLE BRUNSWICK COUNTY BRIDGE.GPJ NC_DOT.GDT 10/12/22

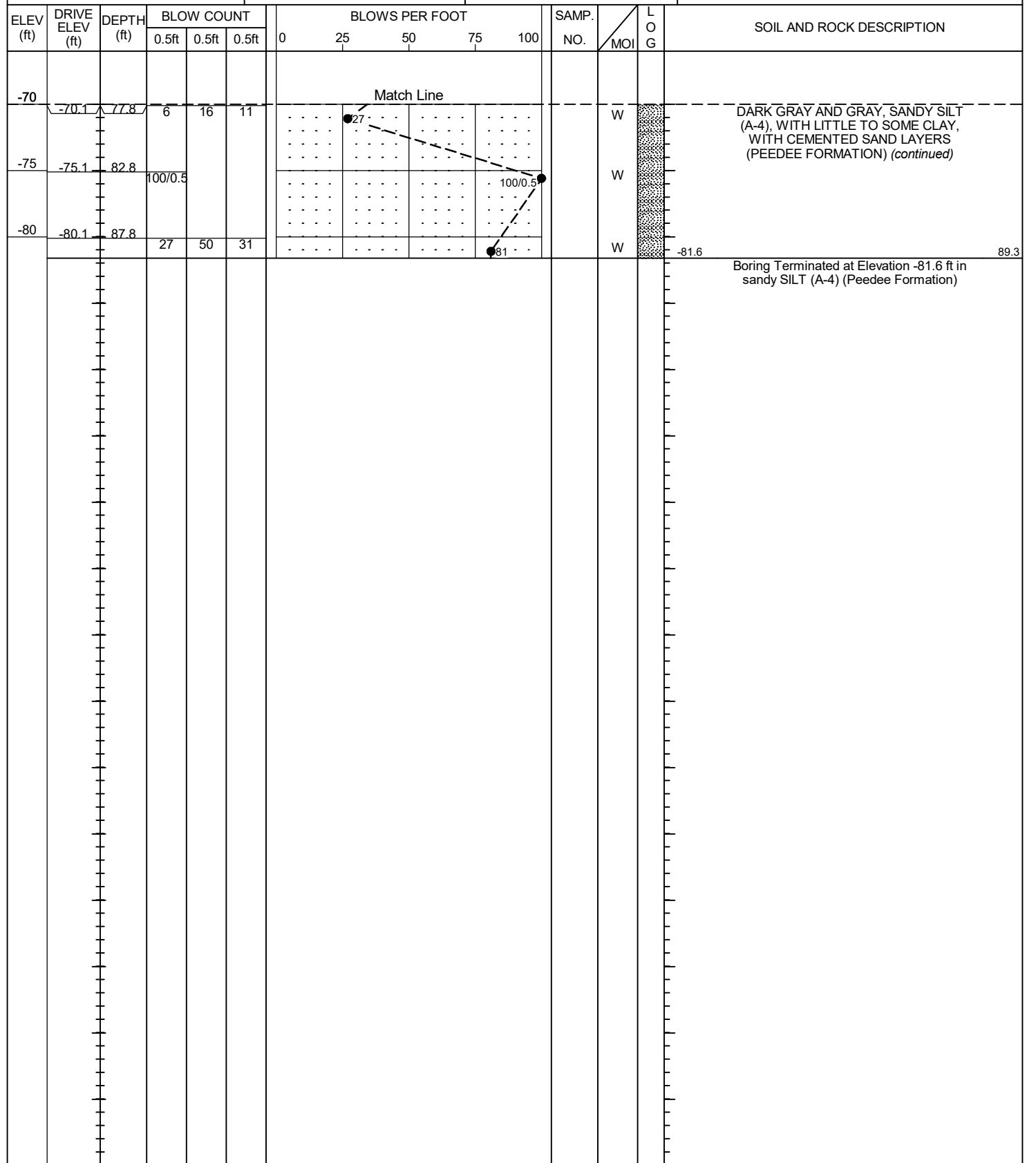
GEOTECHNICAL BORING REPORT BORE LOG

WBS 67139.1.1	TIP BR-0139	COUNTY BRUNSWICK	GEOLOGIST J. Rose
SITE DESCRIPTION BRIDGE ON NC 133 (RIVER ROAD) OVER SAND HILL CREEK			
BORING NO. B4-B	STATION 20+84	OFFSET 10 ft RT	ALIGNMENT -L-
COLLAR ELEV. 7.7 ft	TOTAL DEPTH 89.3 ft	NORTHING 129,055	EASTING 2,312,004
DRILL RIG/HAMMER EFF./DATE BRI1424 CME-45C 83% 08/24/2022		DRILL METHOD Mud Rotary	HAMMER TYPE Automatic
DRILLER M. Radford	START DATE 08/26/22	COMP. DATE 08/26/22	SURFACE WATER DEPTH N/A



NCDOT BORE DOUBLE BRUNSWICK COUNTY BRIDGE.GPJ NC_DOT.GDT 10/12/22

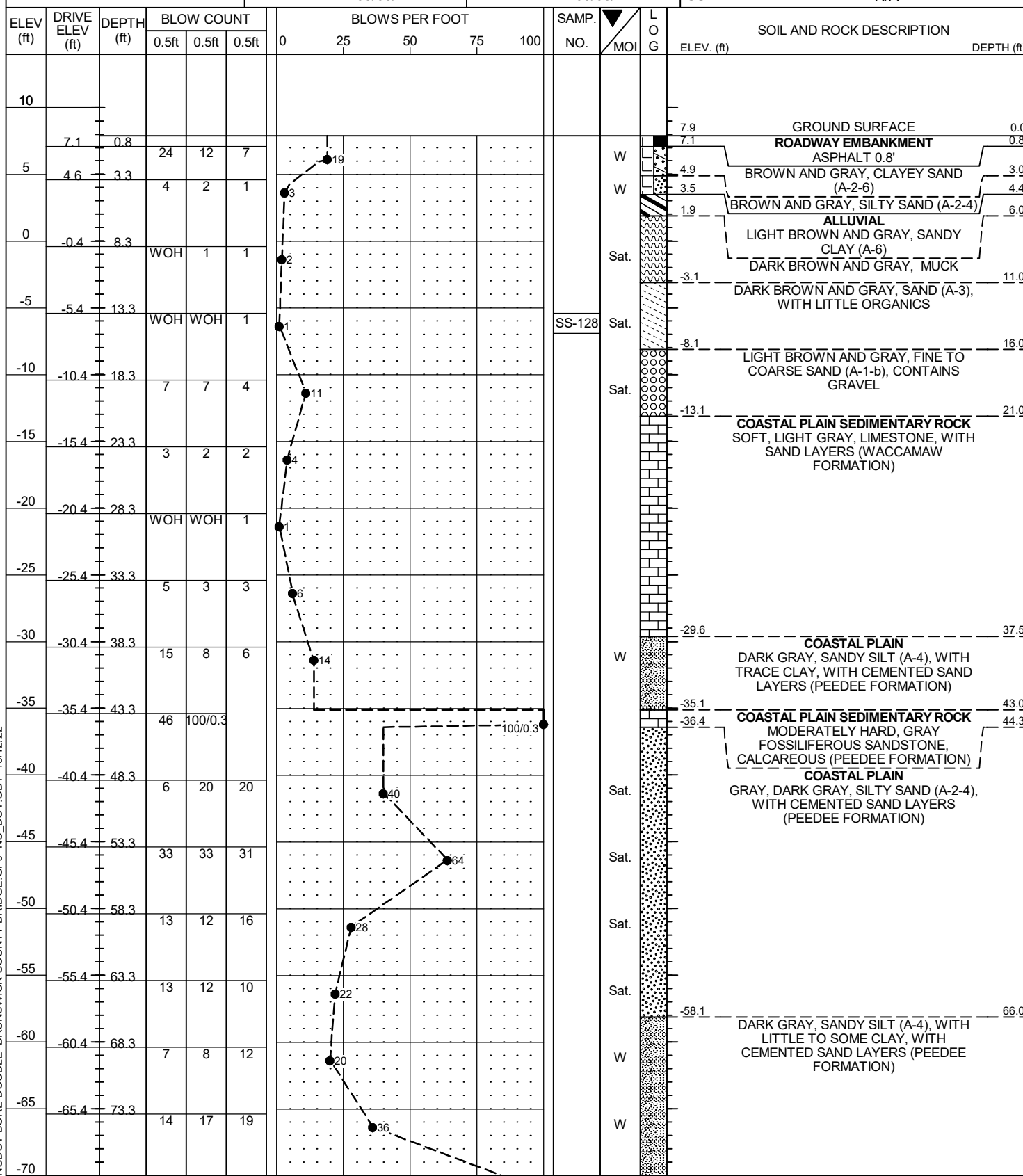
WBS 67139.1.1	TIP BR-0139	COUNTY BRUNSWICK	GEOLOGIST J. Rose
SITE DESCRIPTION BRIDGE ON NC 133 (RIVER ROAD) OVER SAND HILL CREEK			
BORING NO. B4-B	STATION 20+84	OFFSET 10 ft RT	ALIGNMENT -L-
COLLAR ELEV. 7.7 ft	TOTAL DEPTH 89.3 ft	NORTHING 129,055	EASTING 2,312,004
DRILL RIG/HAMMER EFF./DATE BRI1424 CME-45C 83% 08/24/2022		DRILL METHOD Mud Rotary	HAMMER TYPE Automatic
DRILLER M. Radford	START DATE 08/26/22	COMP. DATE 08/26/22	SURFACE WATER DEPTH N/A



GEOTECHNICAL BORING REPORT

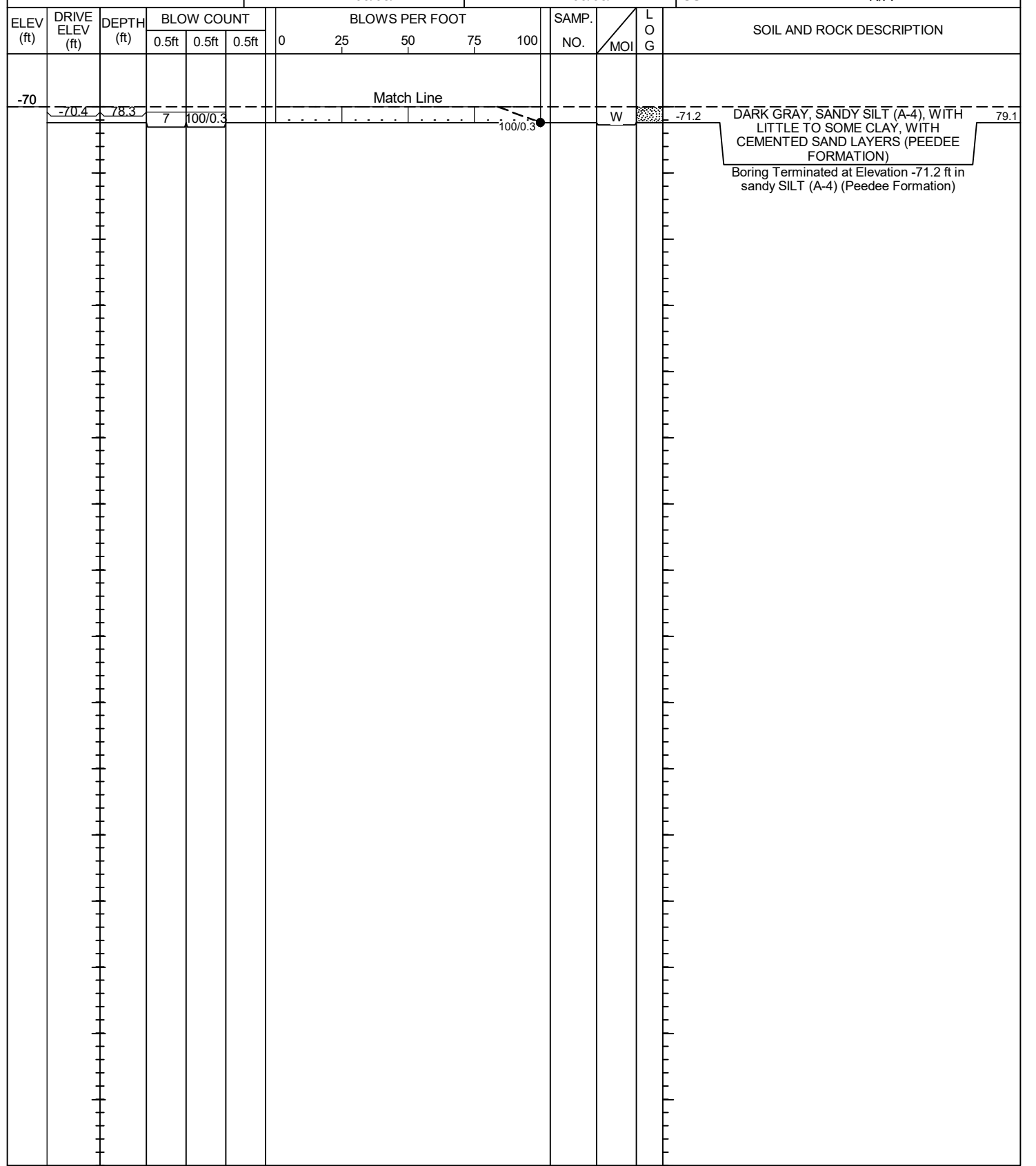
BORE LOG

WBS 67139.1.1	TIP BR-0139	COUNTY BRUNSWICK	GEOLOGIST J. Rose	
SITE DESCRIPTION BRIDGE ON NC 133 (RIVER ROAD) OVER SAND HILL CREEK				GROUND WTR (ft)
BORING NO. B5-A	STATION 21+39	OFFSET 9 ft LT	ALIGNMENT -L-	0 HR. N/A
COLLAR ELEV. 7.9 ft	TOTAL DEPTH 79.1 ft	NORTHING 129,014	EASTING 2,312,046	24 HR. FIAD
DRILL RIG/HAMMER EFF./DATE BRI1424 CME-45C 83% 08/24/2022		DRILL METHOD Mud Rotary	HAMMER TYPE Automatic	
DRILLER M. Radford	START DATE 09/08/22	COMP. DATE 09/08/22	SURFACE WATER DEPTH N/A	



NCDOT BORE DOUBLE BRUNSWICK COUNTY BRIDGE.GPJ NC_DOT.GDT 10/12/22

WBS 67139.1.1	TIP BR-0139	COUNTY BRUNSWICK	GEOLOGIST J. Rose	
SITE DESCRIPTION BRIDGE ON NC 133 (RIVER ROAD) OVER SAND HILL CREEK				GROUND WTR (ft)
BORING NO. B5-A	STATION 21+39	OFFSET 9 ft LT	ALIGNMENT -L-	0 HR. N/A
COLLAR ELEV. 7.9 ft	TOTAL DEPTH 79.1 ft	NORTHING 129,014	EASTING 2,312,046	24 HR. FIAD
DRILL RIG/HAMMER EFF./DATE BRI1424 CME-45C 83% 08/24/2022		DRILL METHOD Mud Rotary	HAMMER TYPE Automatic	
DRILLER M. Radford	START DATE 09/08/22	COMP. DATE 09/08/22	SURFACE WATER DEPTH N/A	

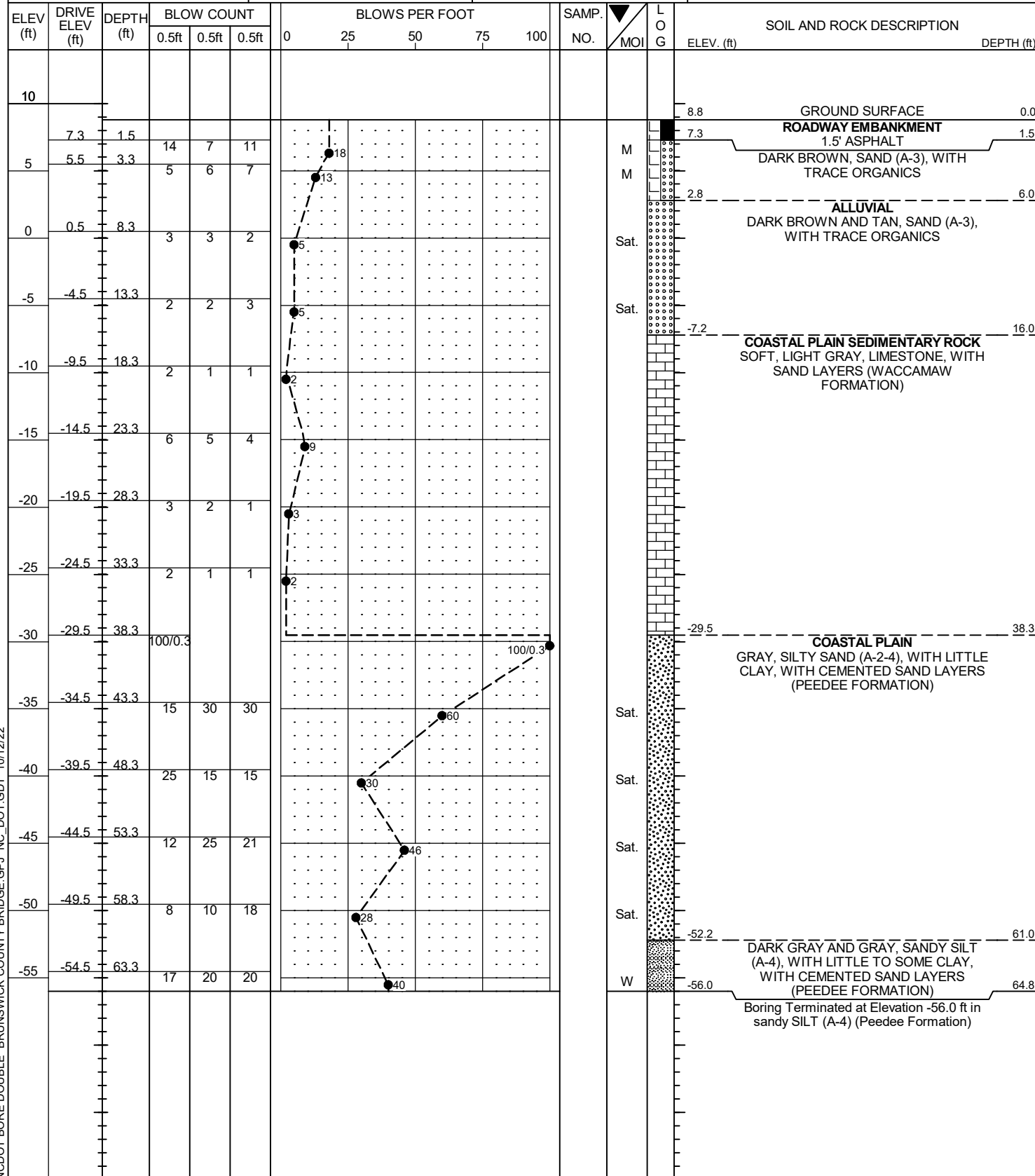


DARK GRAY, SANDY SILT (A-4), WITH LITTLE TO SOME CLAY, WITH CEMENTED SAND LAYERS (PEEDEE FORMATION)
Boring Terminated at Elevation -71.2 ft in sandy SILT (A-4) (Pee Dee Formation)

GEOTECHNICAL BORING REPORT

BORE LOG

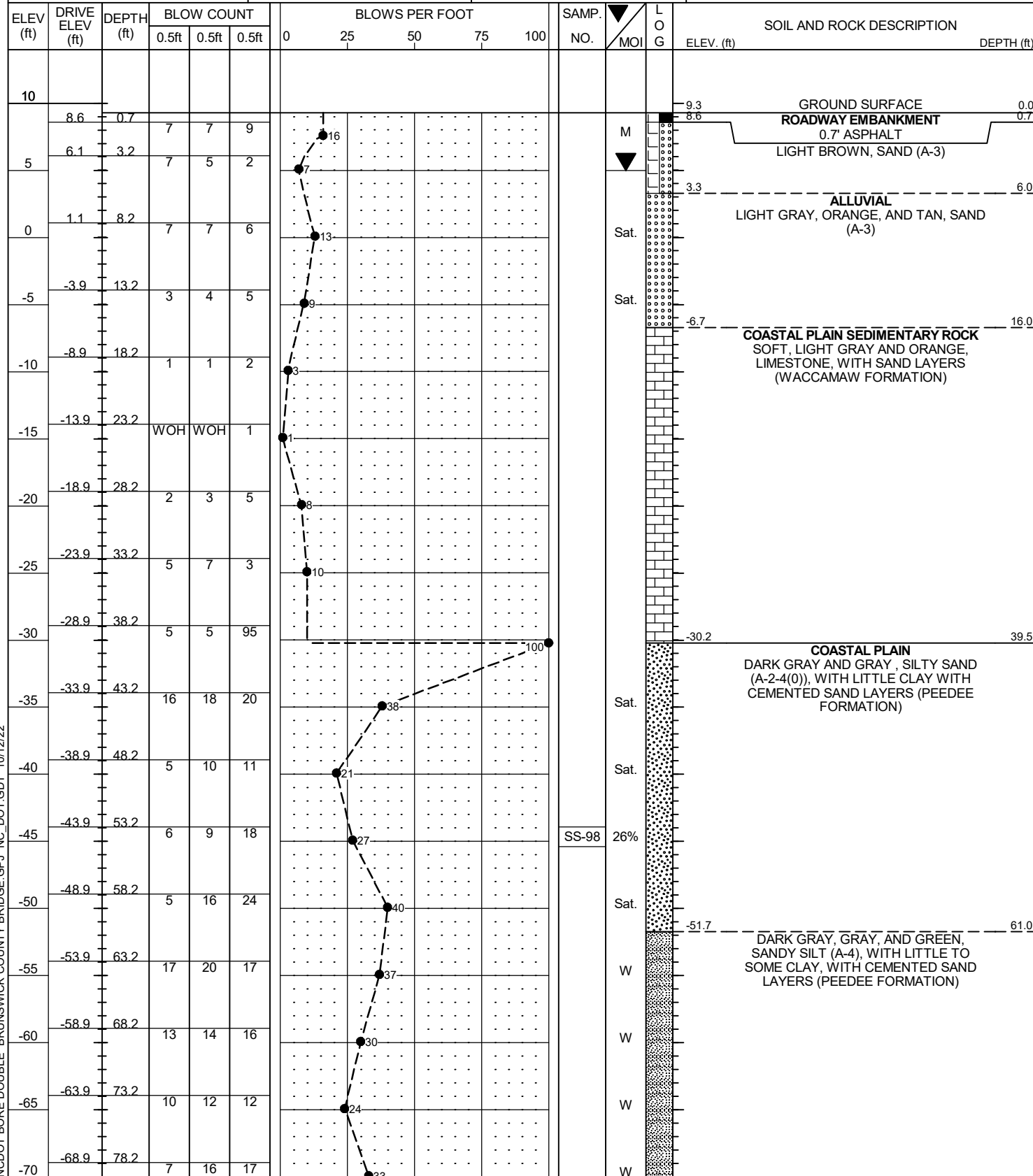
WBS 67139.1.1		TIP BR-0139		COUNTY BRUNSWICK		GEOLOGIST J. Rose	
SITE DESCRIPTION BRIDGE ON NC 133 (RIVER ROAD) OVER SAND HILL CREEK							GROUND WTR (ft)
BORING NO. B6-B		STATION 21+94		OFFSET 9 ft RT		ALIGNMENT -L-	
COLLAR ELEV. 8.8 ft		TOTAL DEPTH 64.8 ft		NORTHING 128,957		EASTING 2,312,054	
DRILL RIG/HAMMER EFF./DATE BRI1424 CME-45C 83% 08/24/2022				DRILL METHOD Mud Rotary		HAMMER TYPE Automatic	
DRILLER M. Radford		START DATE 08/29/22		COMP. DATE 08/29/22		SURFACE WATER DEPTH N/A	



NCDOT BORE DOUBLE BRUNSWICK COUNTY BRIDGE.GPJ NC_DOT.GDT 10/12/22

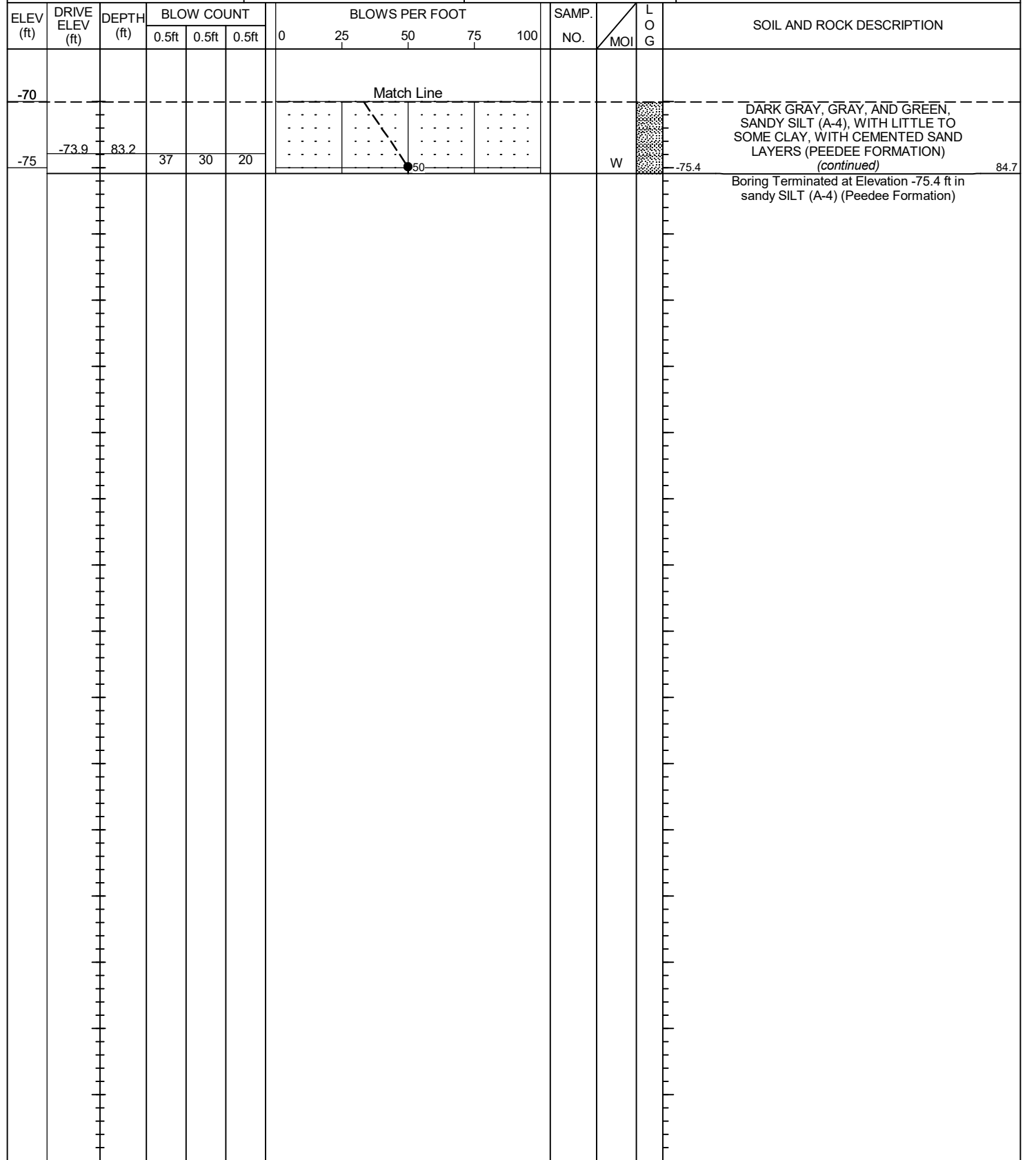
GEOTECHNICAL BORING REPORT BORE LOG

WBS 67139.1.1	TIP BR-0139	COUNTY BRUNSWICK	GEOLOGIST J. Rose	
SITE DESCRIPTION BRIDGE ON NC 133 (RIVER ROAD) OVER SAND HILL CREEK				GROUND WTR (ft)
BORING NO. EB2-A	STATION 22+49	OFFSET 9 ft LT	ALIGNMENT -L-	0 HR. N/A
COLLAR ELEV. 9.3 ft	TOTAL DEPTH 84.7 ft	NORTHING 128,916	EASTING 2,312,095	24 HR. 4.3
DRILL RIG/HAMMER EFF./DATE BRI1424 CME-45C 83% 08/24/2022		DRILL METHOD Mud Rotary	HAMMER TYPE Automatic	
DRILLER M. Radford	START DATE 09/02/22	COMP. DATE 09/02/22	SURFACE WATER DEPTH N/A	



NCDOT BORE DOUBLE BRUNSWICK COUNTY BRIDGE.GPJ NC_DOT.GDT 10/12/22

WBS 67139.1.1	TIP BR-0139	COUNTY BRUNSWICK	GEOLOGIST J. Rose	
SITE DESCRIPTION BRIDGE ON NC 133 (RIVER ROAD) OVER SAND HILL CREEK				GROUND WTR (ft)
BORING NO. EB2-A	STATION 22+49	OFFSET 9 ft LT	ALIGNMENT -L-	0 HR. N/A
COLLAR ELEV. 9.3 ft	TOTAL DEPTH 84.7 ft	NORTHING 128,916	EASTING 2,312,095	24 HR. 4.3
DRILL RIG/HAMMER EFF./DATE BRI1424 CME-45C 83% 08/24/2022		DRILL METHOD Mud Rotary	HAMMER TYPE Automatic	
DRILLER M. Radford	START DATE 09/02/22	COMP. DATE 09/02/22	SURFACE WATER DEPTH N/A	



DARK GRAY, GRAY, AND GREEN, SANDY SILT (A-4), WITH LITTLE TO SOME CLAY, WITH CEMENTED SAND LAYERS (PEEDEE FORMATION) (continued)
Boring Terminated at Elevation -75.4 ft in sandy SILT (A-4) (Pee Dee Formation)

BRIDGE ON NC 133 (RIVER ROAD) OVER SAND HILL CREEK

SOIL TEST RESULTS																
BORING	SAMPLE			DEPTH INTERVAL	AASHTO	LIQUID	PLASTICITY	% BY WEIGHT				% PASSING (SIEVES)			%	%
NO.	NO.	STATION	OFFSET	(FEET)	CLASS.	LIMIT	INDEX	C.SAND	F.SAND	SILT	CLAY	10	40	200	MOISTURE	ORGANIC
EB1-B	SS-09	9' RT	18+64	39.0-40.0	A-4(0)	25	0	7.3	67.4	17.4	7.8	99.6	98	36	32	-
EB1-B	SS-15	9' RT	18+64	68.5-70.0	A-4(0)	26	3	2.3	58.2	23.4	16.1	100	99	47	27	-
B1-A	SS-69	8' LT	19+19	8.2-9.7	-	-	-	-100	0.0	-	-	-	-	-	-	63.8
B1-A	SS-70	8' LT	19+19	14.0-14.7	A-7-6(16)	46	26	9.9	24.1	27.5	38.5	99.0	94	69	53	7.5
B1-A	SS-73	8' LT	19+19	28.2-29.7	A-2-4(0)	25	6	49.9	34.3	5.8	10.0	99.6	75	17	27	-
B1-A	SS-80	8' LT	19+19	63.2-64.7	A-4(0)	22	4	0.7	64.2	23.2	11.9	100	100	42	30	-
B1-A	SS-82	8' LT	19+19	73.2-74.7	A-4(2)	31	9	1.1	53.2	21.4	24.3	99.9	100	53	28	-
B2-B	SS-18	9' RT	19+47	13.5-15.0	-	-	-	-100	0.0	-	-	-	-	-	-	44.1
B2-B	SS-20	9' RT	19+74	23.5-25.0	A-2-4(0)	27	5	34.3	47.9	4.7	13.1	99.9	87	20	35	-
B3-A	SS-108	9' LT	20+29	13.7-14.7	A-2-4(0)	NP	NP	5.9	86.0	8.1	0.0	99.6	99	11	35	2.3
B4-B	SS-37	10' RT	20+84	13.1-14.6	A-3(0)	NP	NP	15.3	82.6	2.1	0.0	99.5	98	3	49	3.2
B4-B	SS-43	10' RT	20+84	42.8-44.3	A-2-4(0)	17	2	13.8	59.2	12.0	15.0	99.9	97	28	23	-
B4-B	SS-46	10' RT	20+84	57.8-59.3	A-2-4(0)	NP	NP	4.1	82.2	8.7	4.9	100	98	19	30	-
B5-A	SS-128	9' LT	21+39	13.3-14.8	-	-	-	-100	0.0	-	-	-	-	-	-	3.7
EB2-A	SS-98	9' LT	22+49	53.2-54.7	A-2-4(0)	NP	NP	1.9	75.9	11.3	11.0	100	100	25	26	-

SITE PHOTOGRAPHS
REPLACE CULVERT NO. 003 OVER SAND HILL CREEK AND TWO OTHER CULVERTS ON NC 133 (RIVER ROAD)



View of NC 133 looking south.



View of NC 133 looking North.



View of Sand Hill Creek looking west southwest.



View of Sand Hill Creek looking east northeast.