

8/17/99

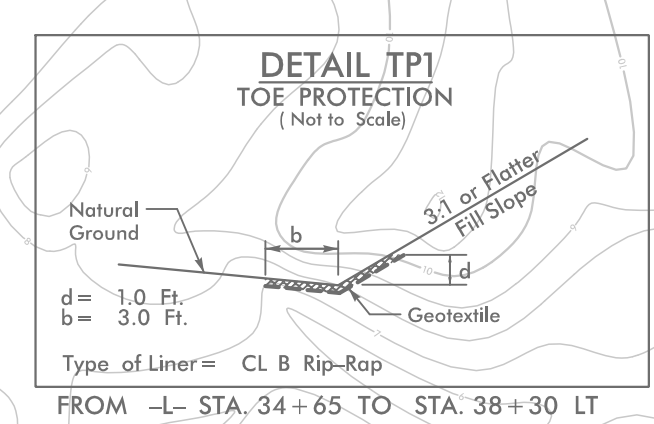
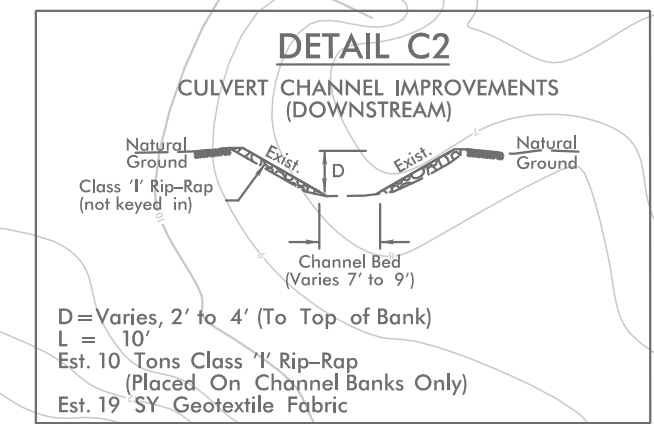
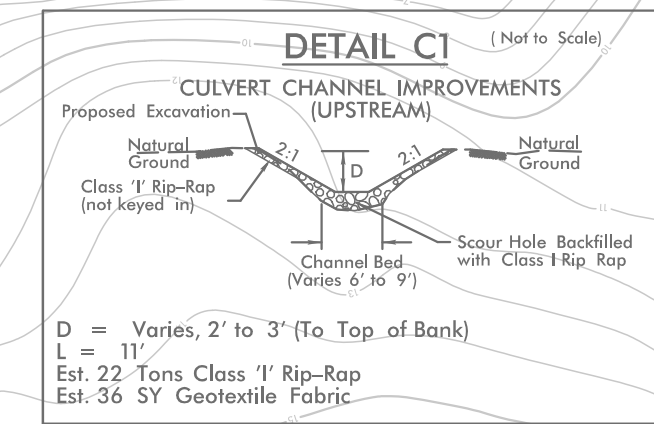
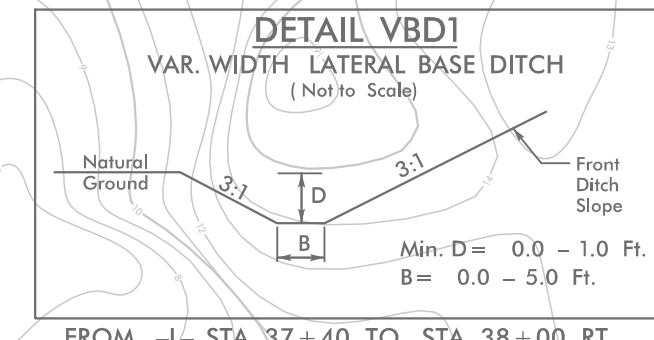
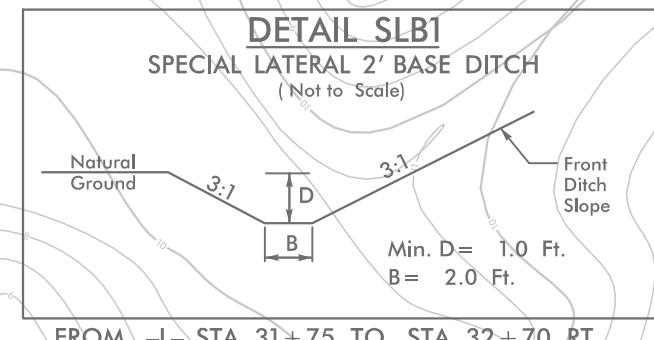
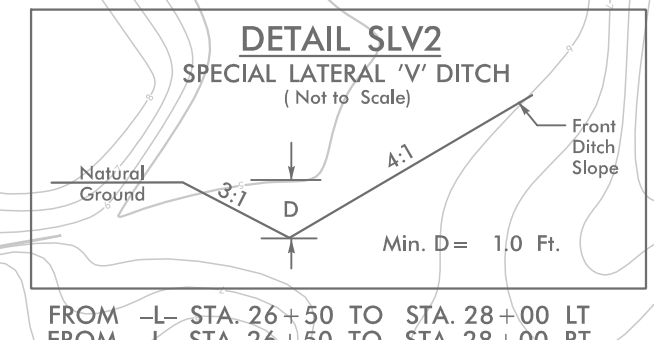
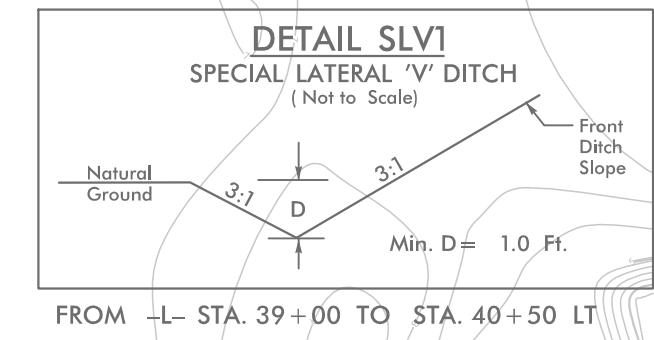
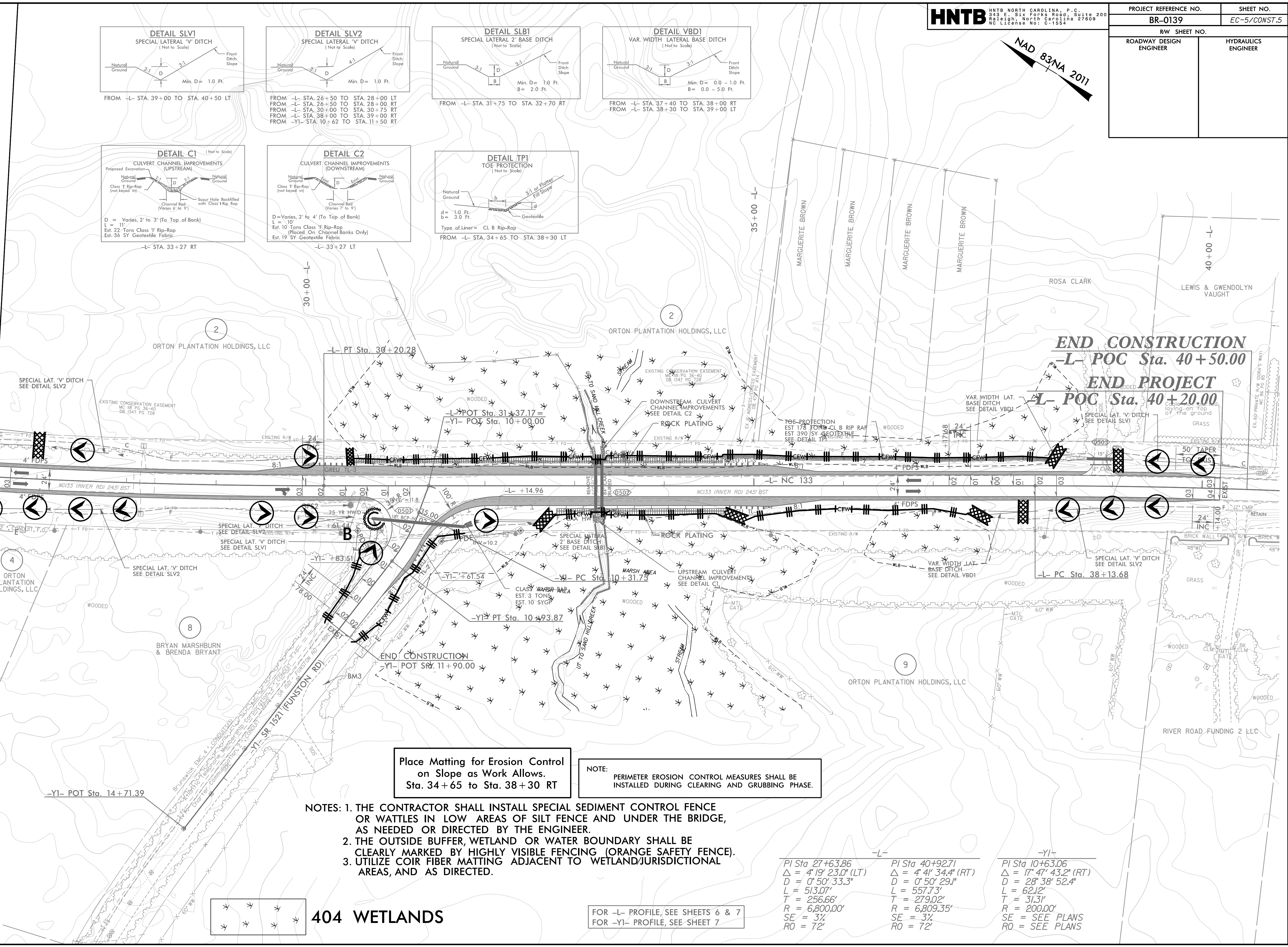
HNTB HNTB NORTH CAROLINA, P.C.
343 E. Six Forks Road, Suite 200
Raleigh, North Carolina 27609
NC License No: C-1554

PROJECT REFERENCE NO.		SHEET NO.	
BR-0139		EC-5/CONST.5	
RW SHEET NO.			
ROADWAY DESIGN ENGINEER		HYDRAULICS ENGINEER	

NAD 83/NA 2011

MATCHLINE -L- STA 26+50.00 SEE SHEET 4

5/23/2024
5:\Projects\BR0139_EC.psh5.dgn
HNTB



Place Matting for Erosion Control
on Slope as Work Allows.
Sta. 34+65 to Sta. 38+30 RT

NOTE:
PERIMETER EROSION CONTROL MEASURES SHALL BE
INSTALLED DURING CLEARING AND GRUBBING PHASE.

- NOTES: 1. THE CONTRACTOR SHALL INSTALL SPECIAL SEDIMENT CONTROL FENCE OR WATTLES IN LOW AREAS OF SILT FENCE AND UNDER THE BRIDGE, AS NEEDED OR DIRECTED BY THE ENGINEER.
2. THE OUTSIDE BUFFER, WETLAND OR WATER BOUNDARY SHALL BE CLEARLY MARKED BY HIGHLY VISIBLE FENCING (ORANGE SAFETY FENCE).
3. UTILIZE COIR FIBER MATTING ADJACENT TO WETLAND/JURISDICTIONAL AREAS, AND AS DIRECTED.

404 WETLANDS

FOR -L- PROFILE, SEE SHEETS 6 & 7
FOR -YI- PROFILE, SEE SHEET 7

-L-	-YI-	-YI-
PI Sta 27+63.86	PI Sta 40+92.71	PI Sta 10+63.06
$\Delta = 4' 19' 23.0''$ (LT)	$\Delta = 4' 41' 34.4''$ (RT)	$\Delta = 17' 47' 43.2''$ (RT)
D = 0' 50' 33.3"	D = 0' 50' 29.1"	D = 28' 38' 52.4"
L = 513.07'	L = 557.73'	L = 62.12'
T = 256.66'	T = 279.02'	T = 31.31'
R = 6,800.00'	R = 6,809.35'	R = 200.00'
SE = 3%	SE = 3%	SE = SEE PLANS
RO = 72'	RO = 72'	RO = SEE PLANS