


# SURVEY CONTROL SHEET

## W/ EXISTING CENTERLINE ALIGNMENTS PRIOR TO CONSTRUCTION

PROJECT REFERENCE NO. BR-0139	SHEET NO. RW02C-3
<b>Location and Surveys</b>	
WITHERSRAVENEL INC 115 MACKENAN DR CARY NC 27511 OFFICE #: 919-469-3340 LICENSE#: F-1479	
PROJECT SURVEYOR 	
DOCUMENT NOT CONSIDERED FINAL UNLESS ALL SIGNATURES COMPLETED	

I, RUDOLF A. VANDERVELDE JR., PLS, certify that the Baseline Control (BL2, BL3, BL4, BL5) for this project was completed under my direct and responsible charge from an actual survey made under my supervision; that all horizontal closures had a minimum ratio of precision of 1:20,000 (Class AA) and Vertical accuracy to Class A. Field work was performed from 10/25/2021 to 11/12/2021, and all coordinates are based on NAD 83/2011 and all elevations are based on NAVD 88; that this survey was performed to meet the requirements of 21NCAC 56.1600 as applicable.

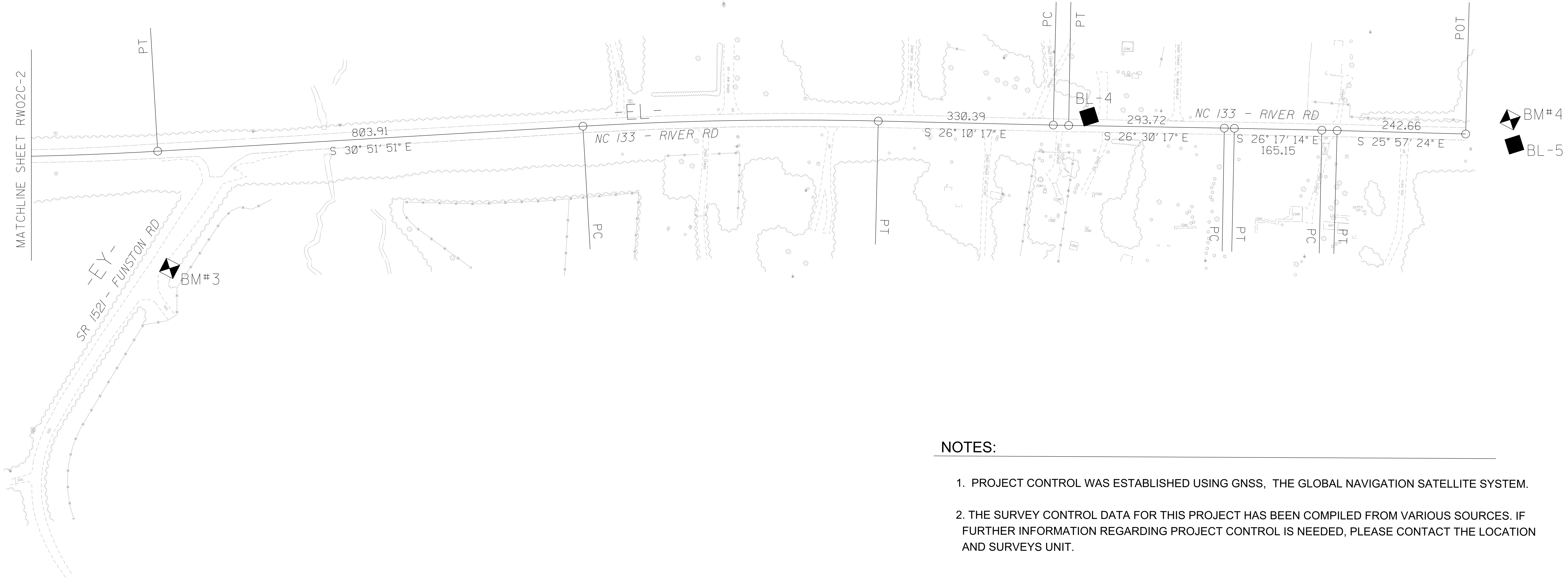
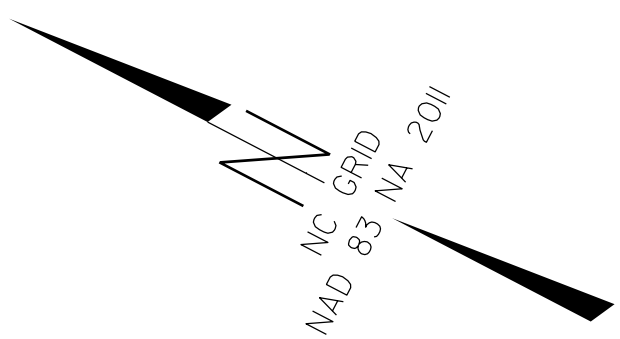
This 29TH day of FEBRUARY, 2024.

DocuSigned by:  
*Rudolf A. Vandervelde Jr.* 2/29/2024  
2C3075E6F0436

Professional Land Surveyor L-5146

DATUM DESCRIPTION, GPS 1, GPS2, GPS3 AND BL1 PROVIDED BY NCDOT; (SEE DATUM DESCRIPTION BELOW)

THE LOCALIZED COORDINATE SYSTEM DEVELOPED FOR THIS PROJECT IS BASED ON THE NAD 1983/NA 2011 STATE PLANE COORDINATES ESTABLISHED BY NCDOT FOR GPS MONUMENT "GPS2" WITH A NORTHING OF 128194.280; EASTING OF 2312445.227; ELEVATION OF 15.128'. THE AVERAGE COMBINED GRID FACTOR USED ON THIS PROJECT (GROUND TO GRID) IS 1.0000786326. ALL LINEAR DISTANCES ARE LOCALIZED HORIZONTAL DISTANCES. THE VERTICAL DATUM IS NAVD 88.



REVISIONS

29-FEB-2024 08:06  
K:\2020\0620\20200626\20-BR-0139 Conv Survey\Deometrics\NCDOT\Submittal\Revised C-Sheets submittal 2-28-24\br-0139\_1s\_rw02c-2.dgn  
R.vandervelde AT WR1963

**NOTES:**

1. PROJECT CONTROL WAS ESTABLISHED USING GNSS, THE GLOBAL NAVIGATION SATELLITE SYSTEM.
2. THE SURVEY CONTROL DATA FOR THIS PROJECT HAS BEEN COMPILED FROM VARIOUS SOURCES. IF FURTHER INFORMATION REGARDING PROJECT CONTROL IS NEEDED, PLEASE CONTACT THE LOCATION AND SURVEYS UNIT.