
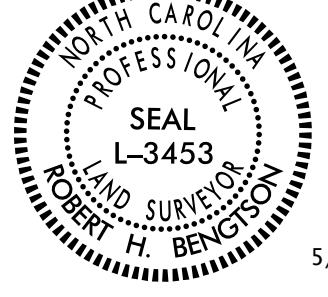
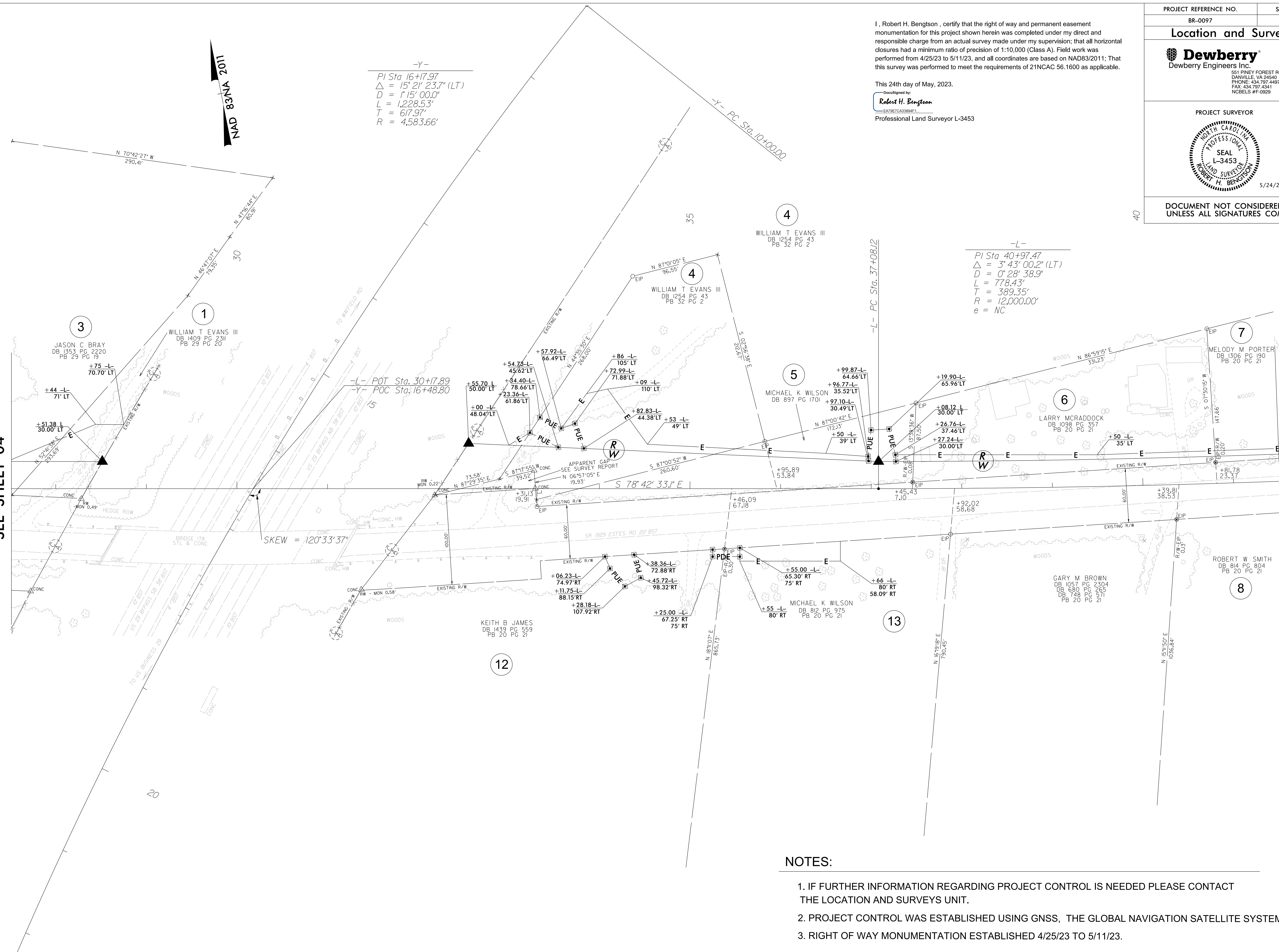


6/2/09

PROJECT REFERENCE NO.	SHEET NO.
BR-0097	RW05
Location and Surveys	
 Dewberry Engineers Inc. 551 PINEY FOREST ROAD DANVILLE, VA 24040 PHONE: 434.797.4407 FAX: 434.797.4341 NCBELS #F-0929	
PROJECT SURVEYOR	
 SEAL L-3453 ROBERT H. BENGTSON 5/24/2023	
DOCUMENT NOT CONSIDERED FINAL UNLESS ALL SIGNATURES COMPLETED	

I, Robert H. Bengtson, certify that the right of way and permanent easement monumentation for this project shown herein was completed under my direct and responsible charge from an actual survey made under my supervision; that all horizontal closures had a minimum ratio of precision of 1:10,000 (Class A). Field work was performed from 4/25/23 to 5/11/23, and all coordinates are based on NAD83/2011; that this survey was performed to meet the requirements of 21NCAC 56.1600 as applicable.

This 24th day of May, 2023.
 DocuSigned by:
Robert H. Bengtson
 EA79EFCAS3884F1
 Professional Land Surveyor L-3453



-Y-
 PI Sta 16+17.97
 $\Delta = 15' 21'' 23.7''$ (LT)
 $D = 1' 15'' 00.0''$
 $L = 1,228.53'$
 $T = 617.97'$
 $R = 4,583.66'$

-L-
 PI Sta 40+97.47
 $\Delta = 3' 43'' 00.2''$ (LT)
 $D = 0' 28'' 38.9''$
 $L = 778.43'$
 $T = 389.35'$
 $R = 12,000.00'$
 $e = NC$

MATCHLINE -L- 27 + 50.00
SEE SHEET 04

MATCHLINE -L- 41 + 50.00
SEE SHEET 06

REVISIONS

NOTES:

1. IF FURTHER INFORMATION REGARDING PROJECT CONTROL IS NEEDED PLEASE CONTACT THE LOCATION AND SURVEYS UNIT.
2. PROJECT CONTROL WAS ESTABLISHED USING GNSS, THE GLOBAL NAVIGATION SATELLITE SYSTEM.
3. RIGHT OF WAY MONUMENTATION ESTABLISHED 4/25/23 TO 5/11/23.

P:\1-MAY-2023\1440_Survey\mcr-est-station\RW_SHEETS\BR0097_L.S.-RW05-230524.dgn
 5/16/23
 bbowell AT PF250WGR