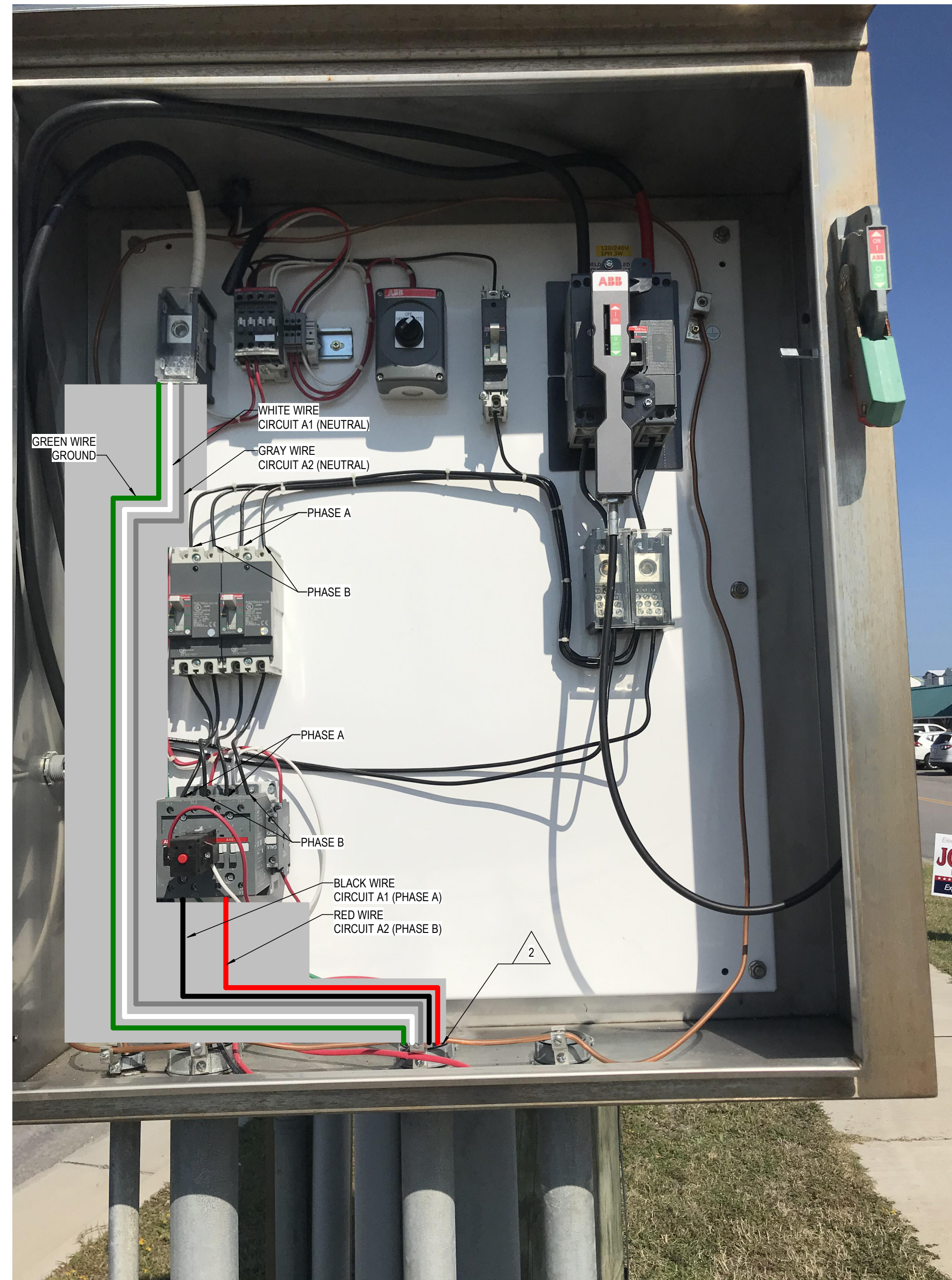


**EXISTING CONDITIONS - CONTROL SYSTEM "A" (TYPICAL)**  
NOT TO SCALE



**CONTROL SYSTEM "A" (TYPICAL)**  
NOT TO SCALE

- NOTES:
- 1 REMOVE EXISTING LIGHTING CIRCUIT WIRING TO THE LUMINAIRES IN THE CONCRETE BARRIER RAIL (2 PHASE WIRES, 1 NEUTRAL WIRE, 1 GROUND WIRE).
  - 2 INSTALL NEW LIGHTING CIRCUIT WIRING TO THE REPLACEMENT LUMINAIRES IN EXISTING CONDUIT. PROVIDE #8 THWN WIRE WITH CONTINUOUSLY COLORED SHEATHING AS NOTED HEREIN:
    - CONTROL SYSTEM "A":
      - CIRCUIT A1: BLACK (PHASE), WHITE (NEUTRAL)
      - CIRCUIT A2: RED (PHASE), GRAY (NEUTRAL)
      - COMMON GROUND FOR A1 AND A2: GREEN
    - CONTROL SYSTEM "B":
      - CIRCUIT B1: BLACK (PHASE), WHITE (NEUTRAL)
      - CIRCUIT B2: RED (PHASE), GRAY (NEUTRAL)
      - COMMON GROUND FOR B1 AND B2: GREEN

PROJECT NO. 15BPR.138.3  
                                 PENDER                                  COUNTY  
 BRIDGE                                  700016

STATE OF NORTH CAROLINA  
 DEPARTMENT OF TRANSPORTATION  
 RALEIGH

REPAIR OF PEDESTRIAN  
 LIGHTING SYSTEM

CONTROL SYSTEM CHANGES



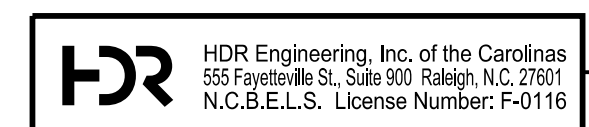
REVISIONS

NO.	BY:	DATE:	NO.	BY:	DATE:
1			3		
2			4		

SHEET NO. E-2  
 TOTAL SHEETS 10

PLOT DRIVER: NCD07.pdft\_color\_eng\_50.ppt\_bak  
 USER: S.QUIN  
 FILE: DATE:

DES BY: M.THEOLOGIDY	DATE: 03/24	DWG BY: M.THEOLOGIDY	DATE: 03/24
DES CHK: S.QUIN	DATE: 03/24	CHK BY: S.QUIN	DATE: 03/24



DOCUMENT NOT CONSIDERED FINAL  
 UNLESS ALL SIGNATURES COMPLETED