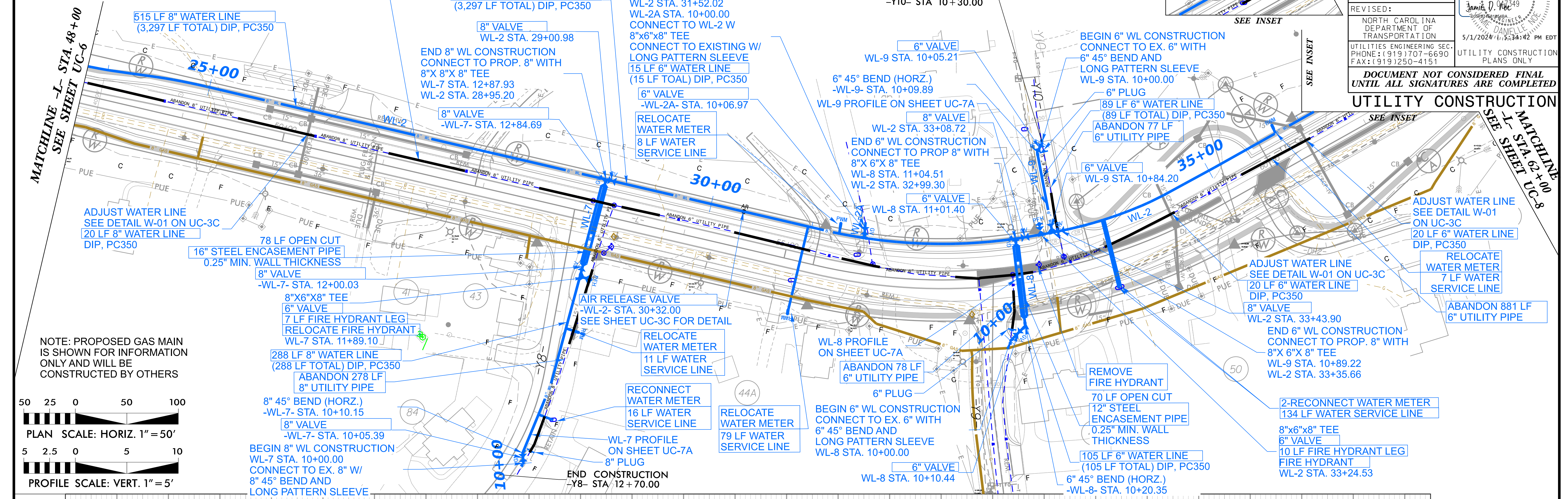


4/18/24

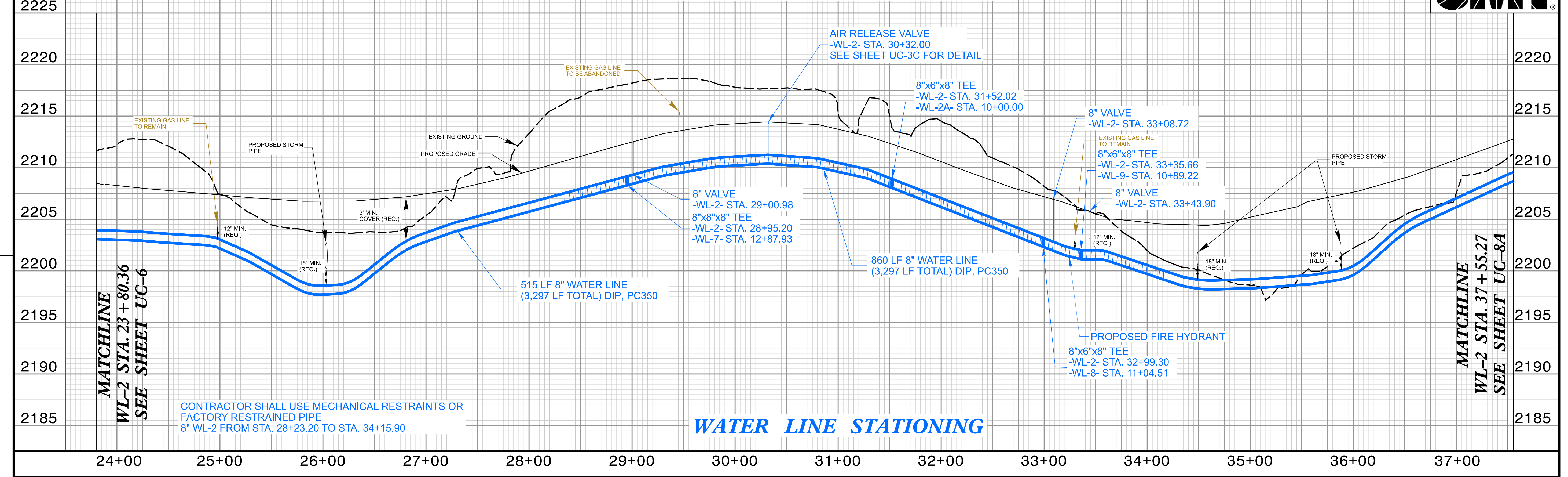
THE ESTIMATED QUANTITY OF DUCTILE IRON WATER PIPE FITTINGS ON THIS PLAN SHEET IS 2,825 POUNDS. THE ACTUAL QUANTITY AND TYPE OF FITTINGS WILL VARY BASED ON FIELD CONDITIONS.

PROJECT REFERENCE NO.	SHEET NO.
U-5783	UC-7
DESIGNED BY: MRD	
DRAWN BY: MRD	
CHECKED BY: JDN	
APPROVED BY: JDN	
REVISED:	UTILITIES ENGINEERING SEC. PHONE: (919) 707-6690 FAX: (919) 250-4151
NORTH CAROLINA DEPARTMENT OF TRANSPORTATION	
5/1/2024 11:53:42 PM EDT	
UTILITY CONSTRUCTION PLANS ONLY	
DOCUMENT NOT CONSIDERED FINAL UNTIL ALL SIGNATURES ARE COMPLETED	

UTILITY CONSTRUCTION



WATER LINE -WL-2- PROFILE

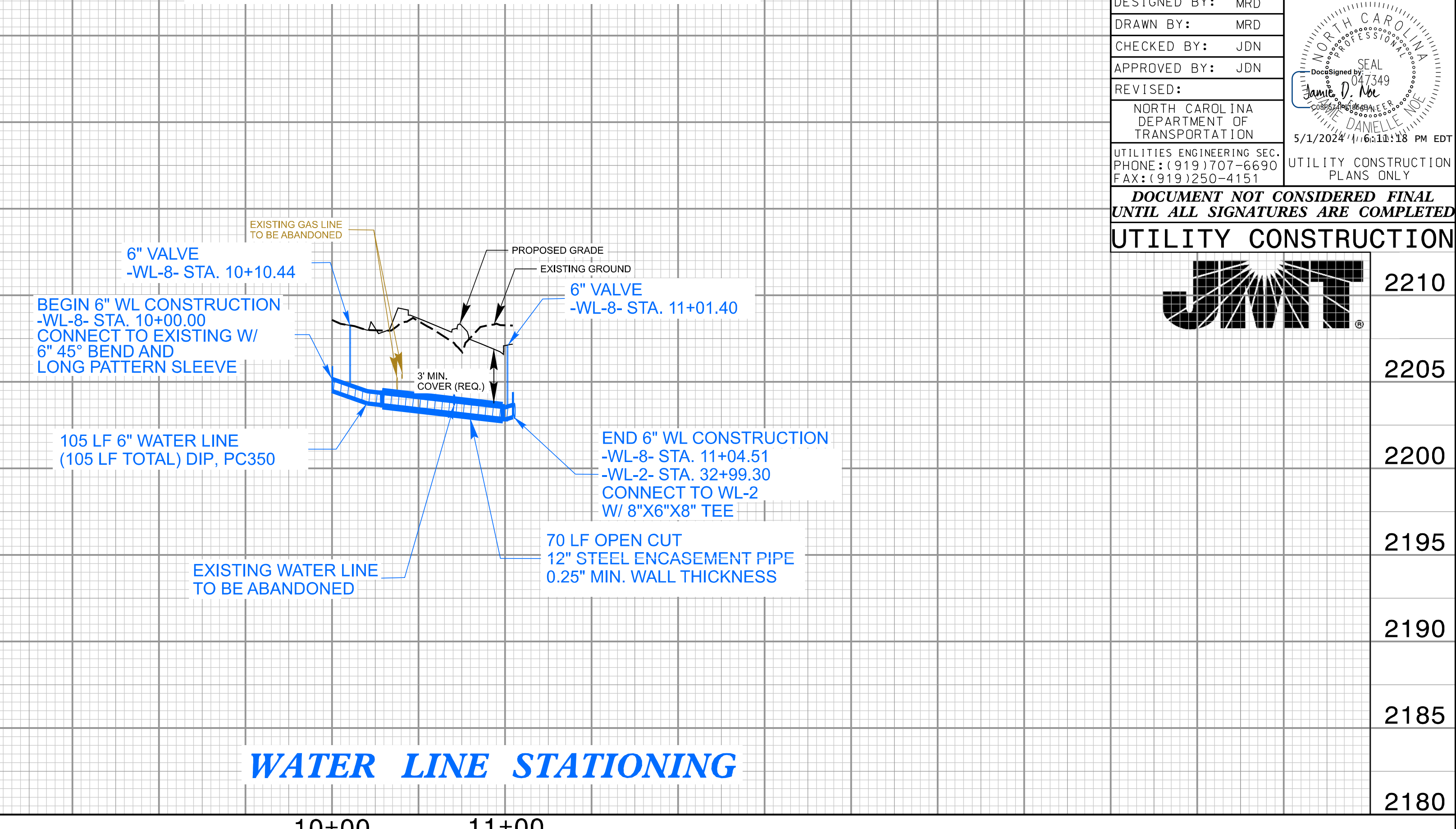
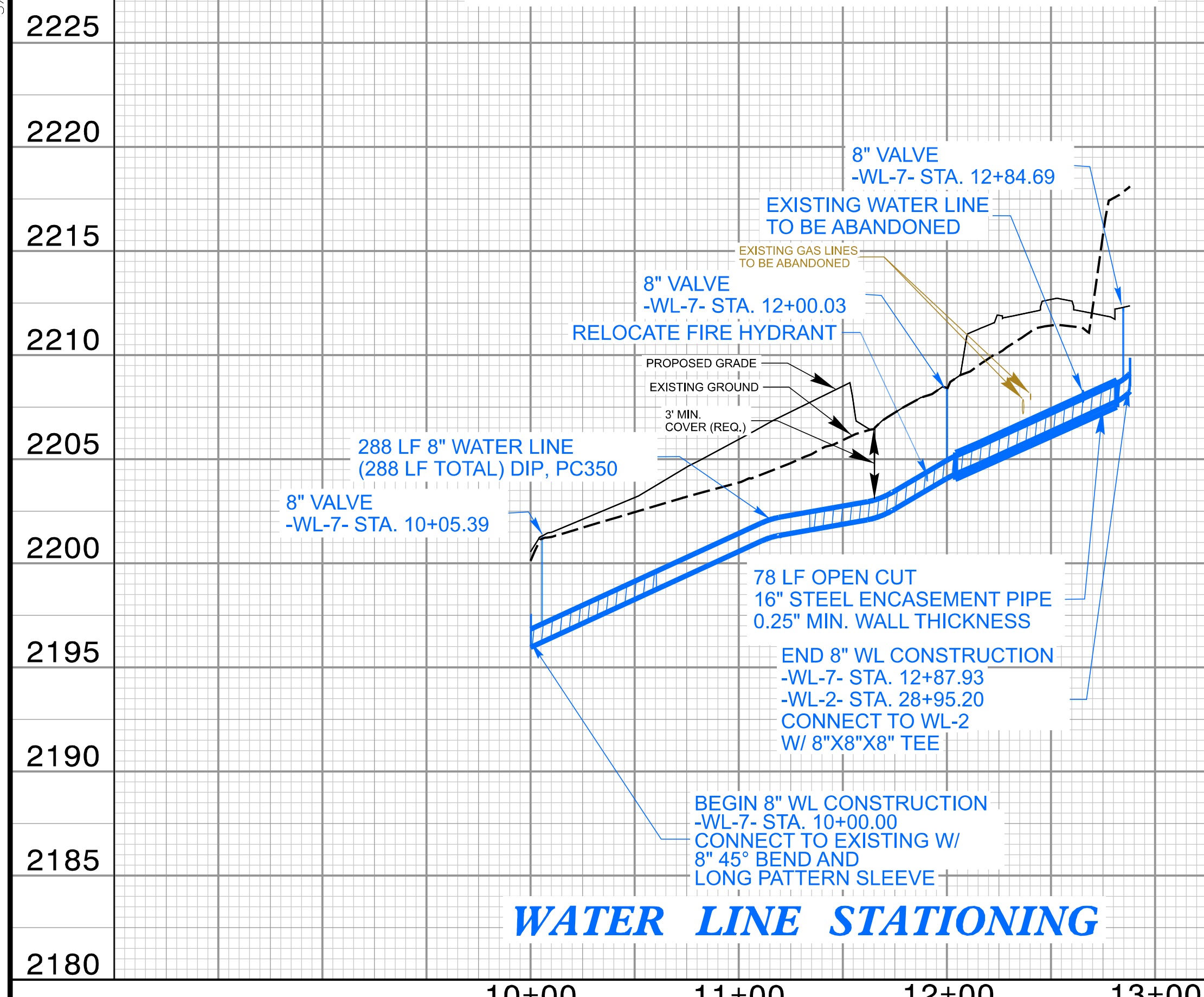
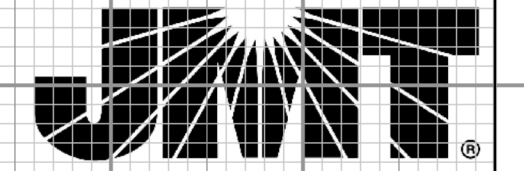


5/28/24

WATER LINE -WL-7- PROFILE

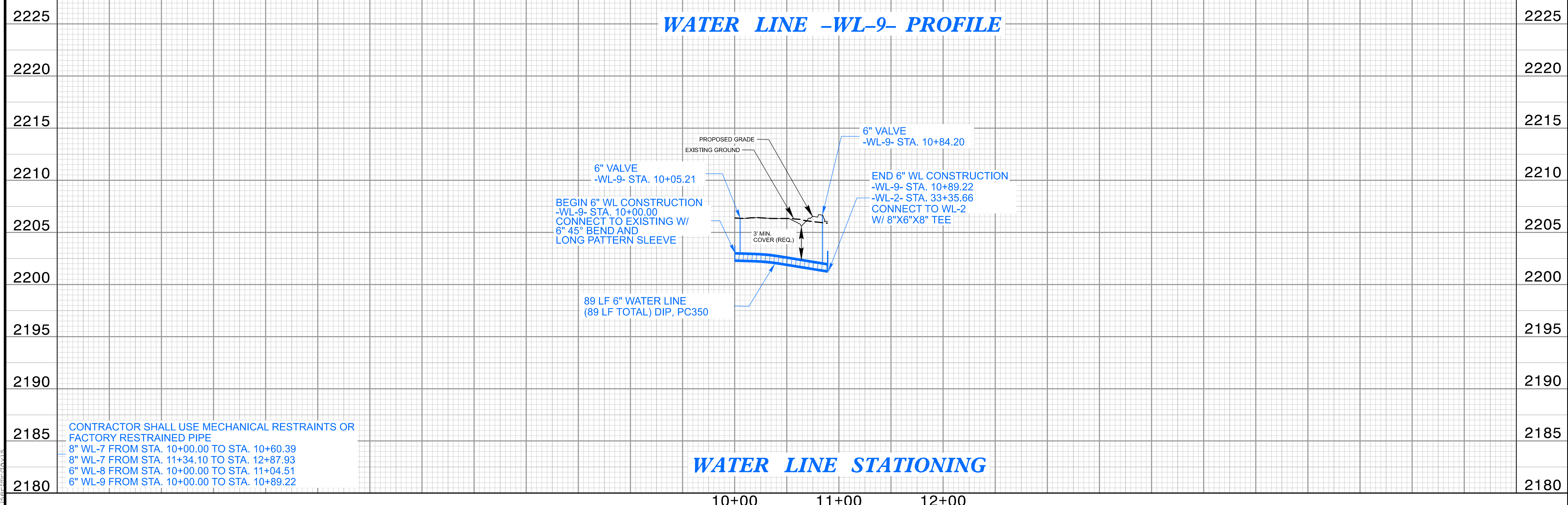
WATER LINE -WL-8- PROFILE

PROJECT REFERENCE NO.	SHEET NO.
U-5783	UC-7A
DESIGNED BY: MRD	
DRAWN BY: MRD	
CHECKED BY: JDN	
APPROVED BY: JDN	
REVISED:	5/1/2024 11:06:18 AM EDT
NORTH CAROLINA DEPARTMENT OF TRANSPORTATION	
UTILITIES ENGINEERING SEC. PHONE: (919) 707-6690 FAX: (919) 250-4151	
UTILITY CONSTRUCTION PLANS ONLY	
DOCUMENT NOT CONSIDERED FINAL UNTIL ALL SIGNATURES ARE COMPLETED	
UTILITY CONSTRUCTION	



WATER LINE STATIONING

WATER LINE STATIONING

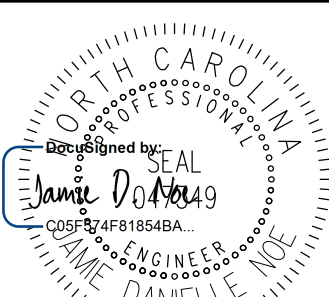


WATER LINE -WL-9- PROFILE

WATER LINE STATIONING

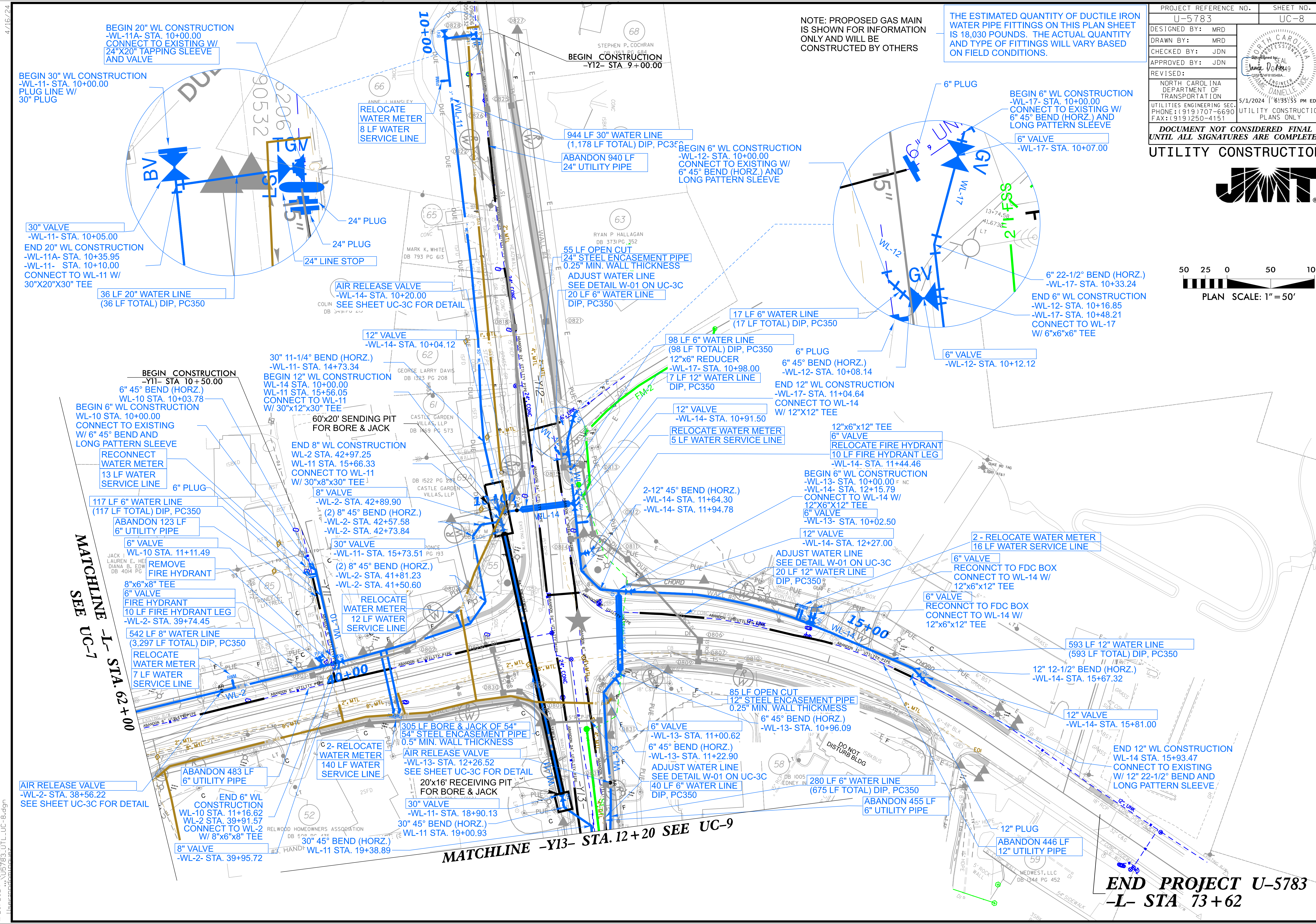
CONTRACTOR SHALL USE MECHANICAL RESTRAINTS OR FACTORY RESTRAINED PIPE
 8" WL-7 FROM STA. 10+00.00 TO STA. 10+60.39
 8" WL-7 FROM STA. 11+34.10 TO STA. 12+87.93
 6" WL-8 FROM STA. 10+00.00 TO STA. 11+04.51
 6" WL-9 FROM STA. 10+00.00 TO STA. 10+89.22

5/1/2024 5:26:43 PM
U-5783 UC-7A.dgn
lineartmcbavis

DESIGNED BY: MRD	
DRAWN BY: MRD	
CHECKED BY: JDN	
APPROVED BY: JDN	
REVISED:	
NORTH CAROLINA DEPARTMENT OF TRANSPORTATION	
UTILITIES ENGINEERING SEC. PHONE: (919) 707-6690 FAX: (919) 250-4151	
5/1/2024 11:58:55 PM EDT	
UTILITY CONSTRUCTION PLANS ONLY	

DOCUMENT NOT CONSIDERED FINAL UNTIL ALL SIGNATURES ARE COMPLETED

UTILITY CONSTRUCTION



NOTE: PROPOSED GAS MAIN IS SHOWN FOR INFORMATION ONLY AND WILL BE CONSTRUCTED BY OTHERS

THE ESTIMATED QUANTITY OF DUCTILE IRON WATER PIPE FITTINGS ON THIS PLAN SHEET IS 18,030 POUNDS. THE ACTUAL QUANTITY AND TYPE OF FITTINGS WILL VARY BASED ON FIELD CONDITIONS.

BEGIN 20" WL CONSTRUCTION -WL-11A- STA. 10+00.00 CONNECT TO EXISTING W/ 24"x20" TAPPING SLEEVE AND VALVE

BEGIN 30" WL CONSTRUCTION -WL-11- STA. 10+00.00 PLUG LINE W/ 30" PLUG

30" VALVE -WL-11- STA. 10+05.00 END 20" WL CONSTRUCTION -WL-11A- STA. 10+35.95 -WL-11- STA. 10+10.00 CONNECT TO WL-11 W/ 30"x20"x30" TEE

MATCHLINE -L- STA. 62+00 SEE UC-7

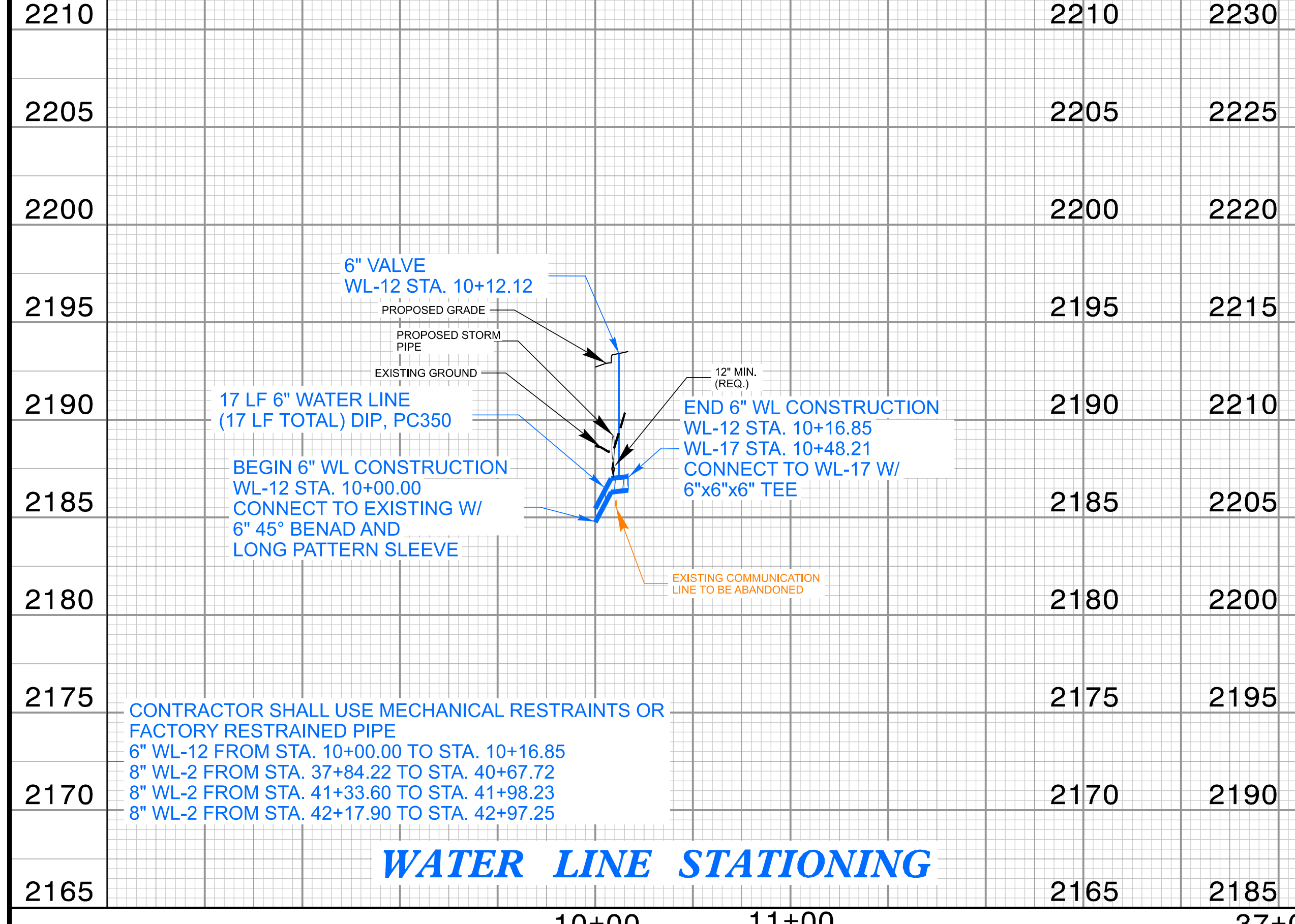
MATCHLINE -Y13- STA. 12+20 SEE UC-9

END PROJECT U-5783 -L- STA 73+62

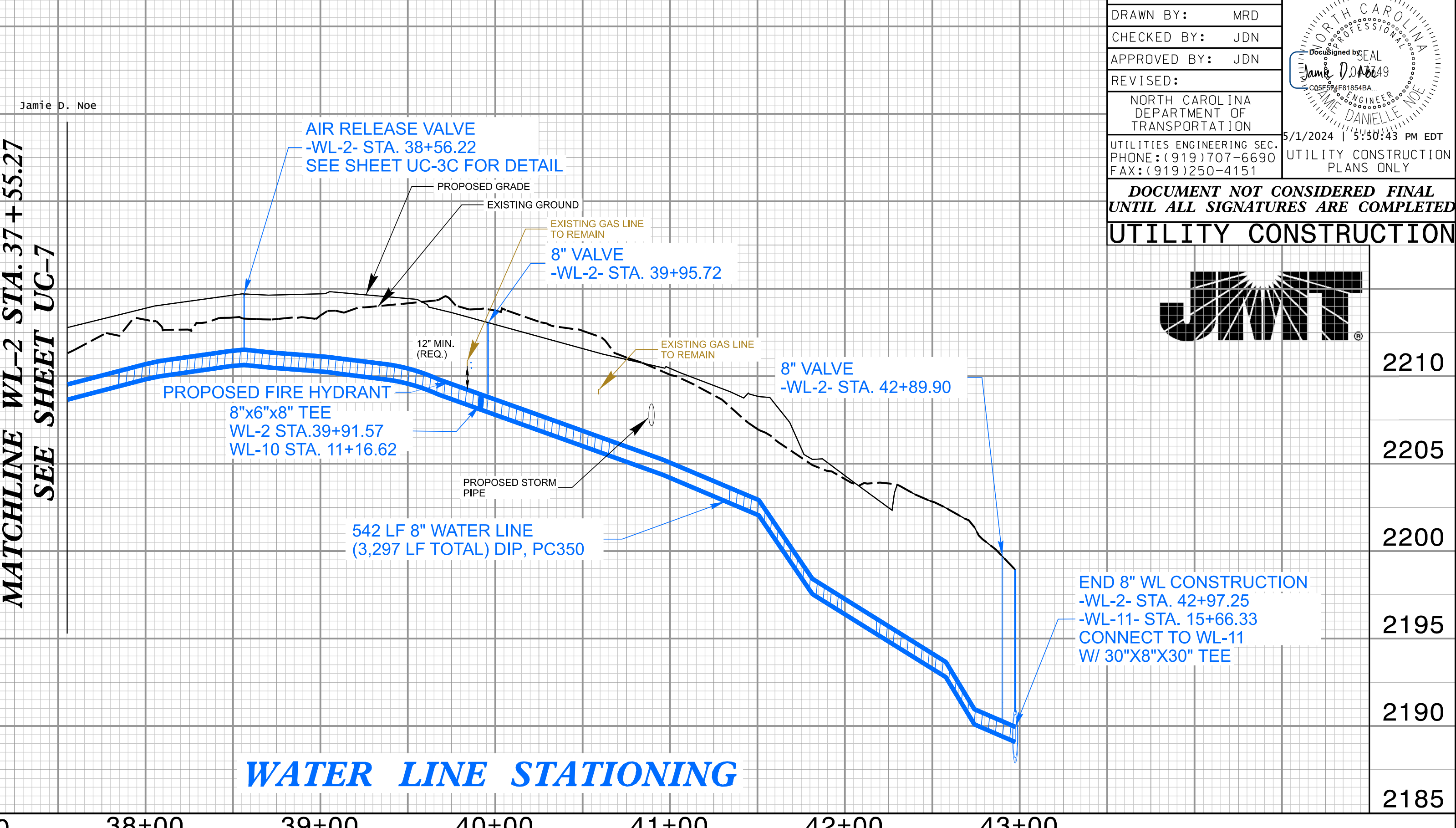
4/26/2024 11:47:50 AM I:\5783\UTL\UC-8.dgn

4/16/24

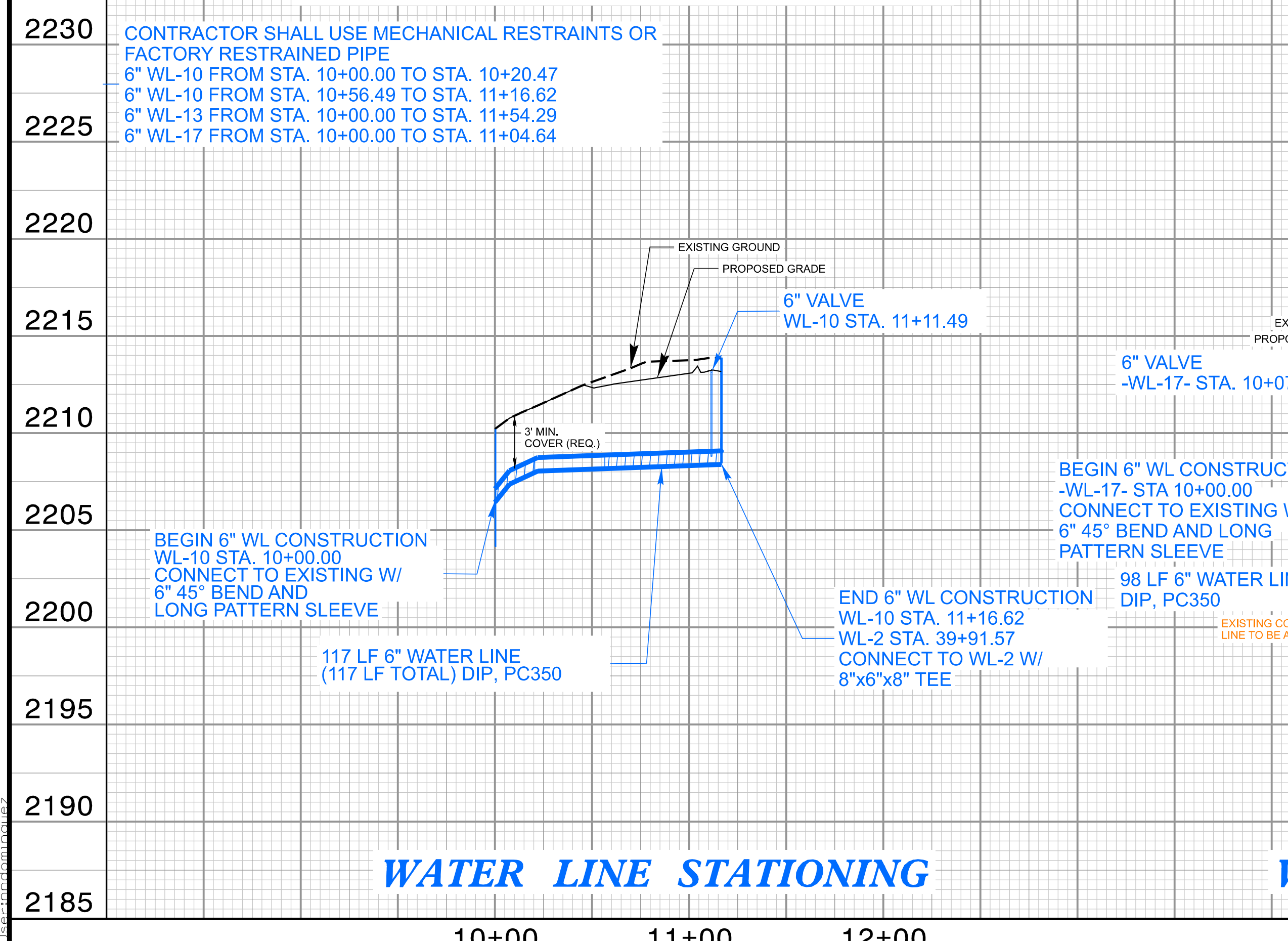
WATER LINE -WL-12- PROFILE



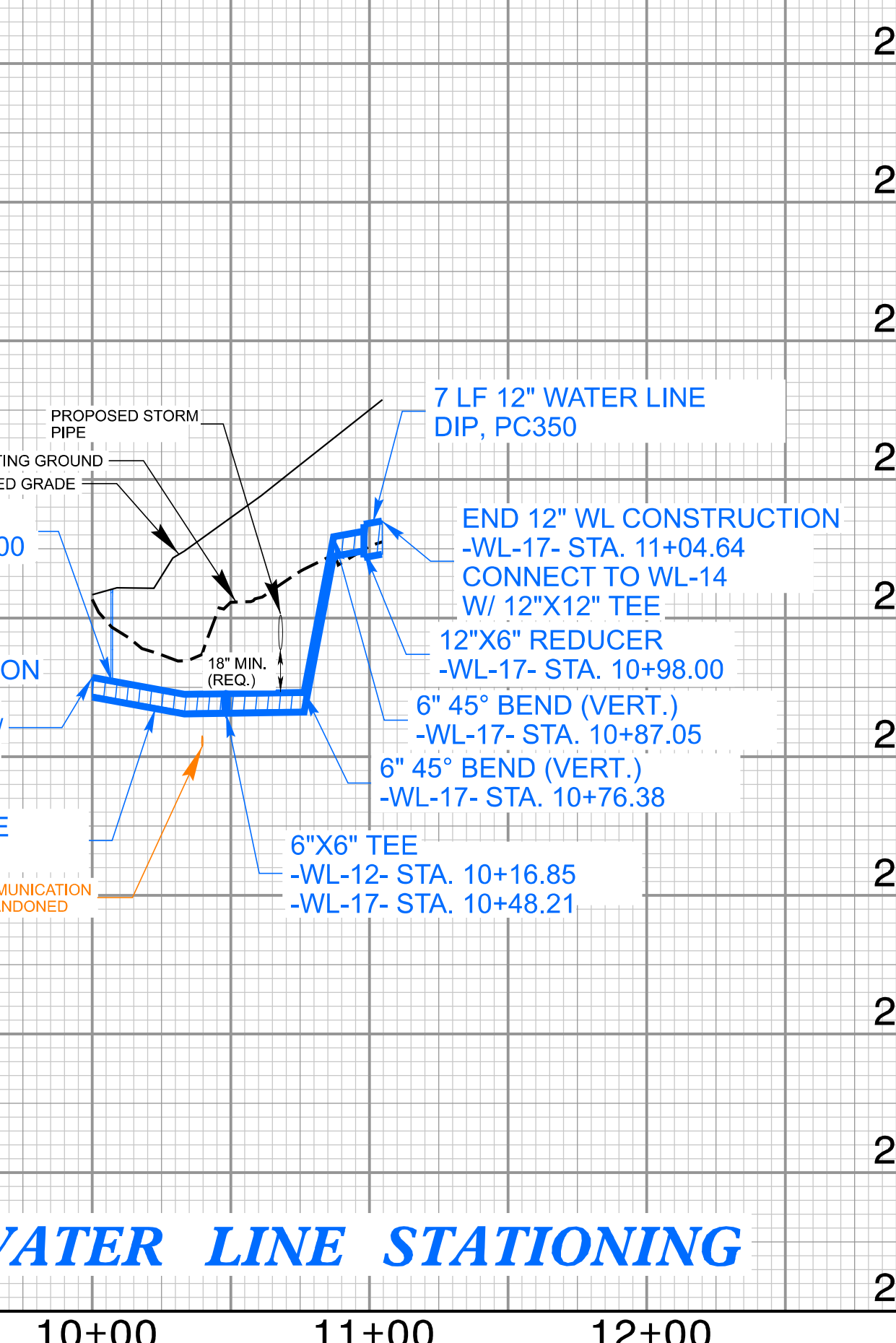
WATER LINE -WL-2- PROFILE



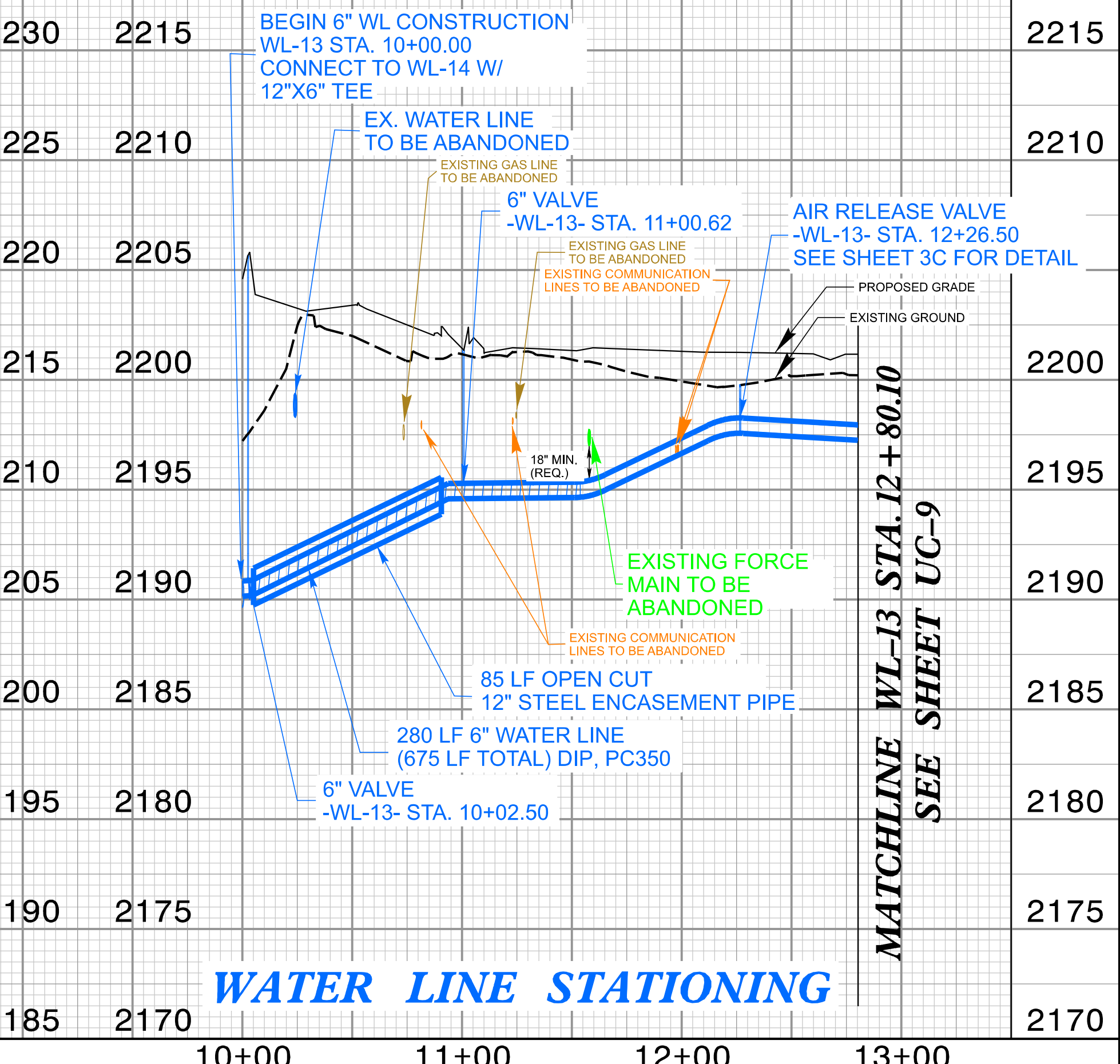
WATER LINE -WL-10- PROFILE



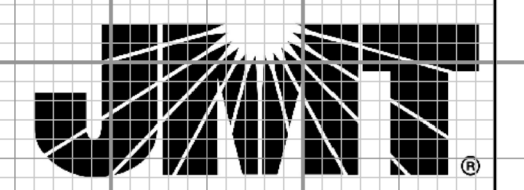
WATER LINE -WL-17- PROFILE



WATER LINE -WL-13- PROFILE



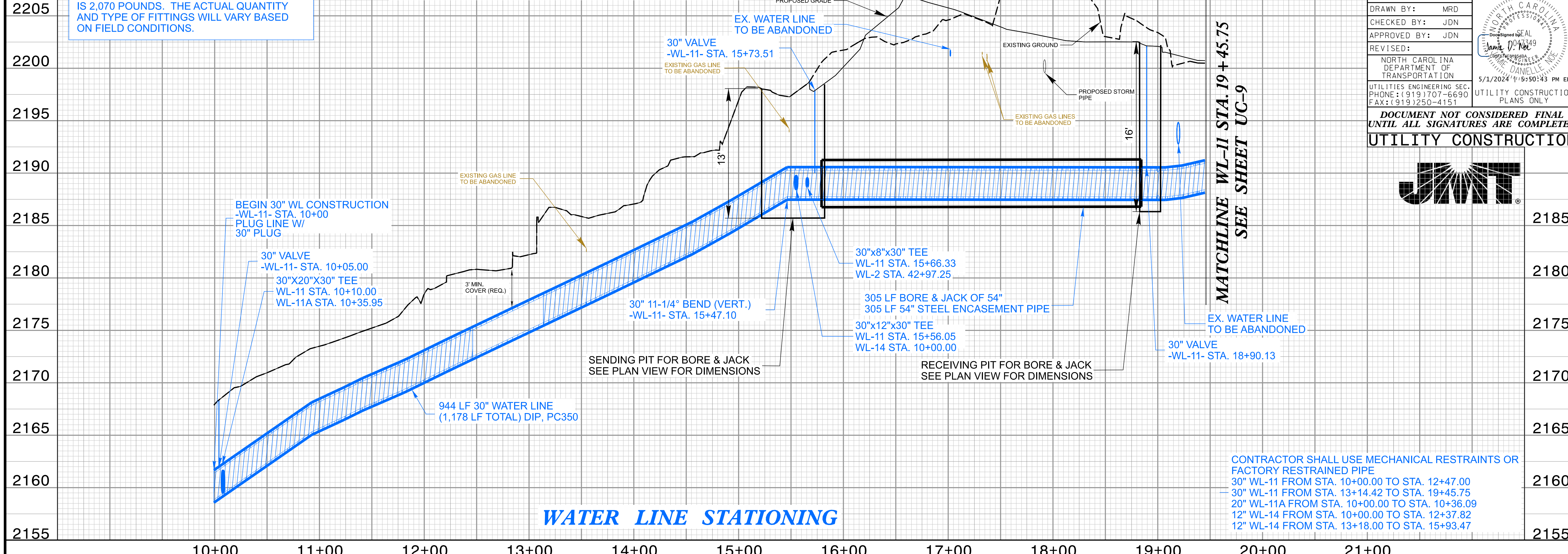
PROJECT REFERENCE NO. U-5783	SHEET NO. UC-8A
DESIGNED BY: MRD	
DRAWN BY: MRD	
CHECKED BY: JDN	
APPROVED BY: JDN	
REVISED:	
NORTH CAROLINA DEPARTMENT OF TRANSPORTATION	5/1/2024 5:50:43 PM EDT
UTILITIES ENGINEERING SEC. PHONE: (919) 707-6690 FAX: (919) 250-4151	UTILITY CONSTRUCTION PLANS ONLY
DOCUMENT NOT CONSIDERED FINAL UNTIL ALL SIGNATURES ARE COMPLETED	
UTILITY CONSTRUCTION	



4/29/2024 12:46:37 PM
4:15:28 PM
11-1013-18.dgn

THE ESTIMATED QUANTITY OF DUCTILE IRON WATER PIPE FITTINGS ON THIS PLAN SHEET IS 2,070 POUNDS. THE ACTUAL QUANTITY AND TYPE OF FITTINGS WILL VARY BASED ON FIELD CONDITIONS.

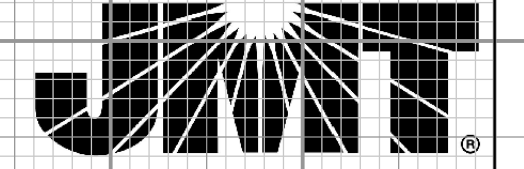
WATER LINE -WL-11- PROFILE



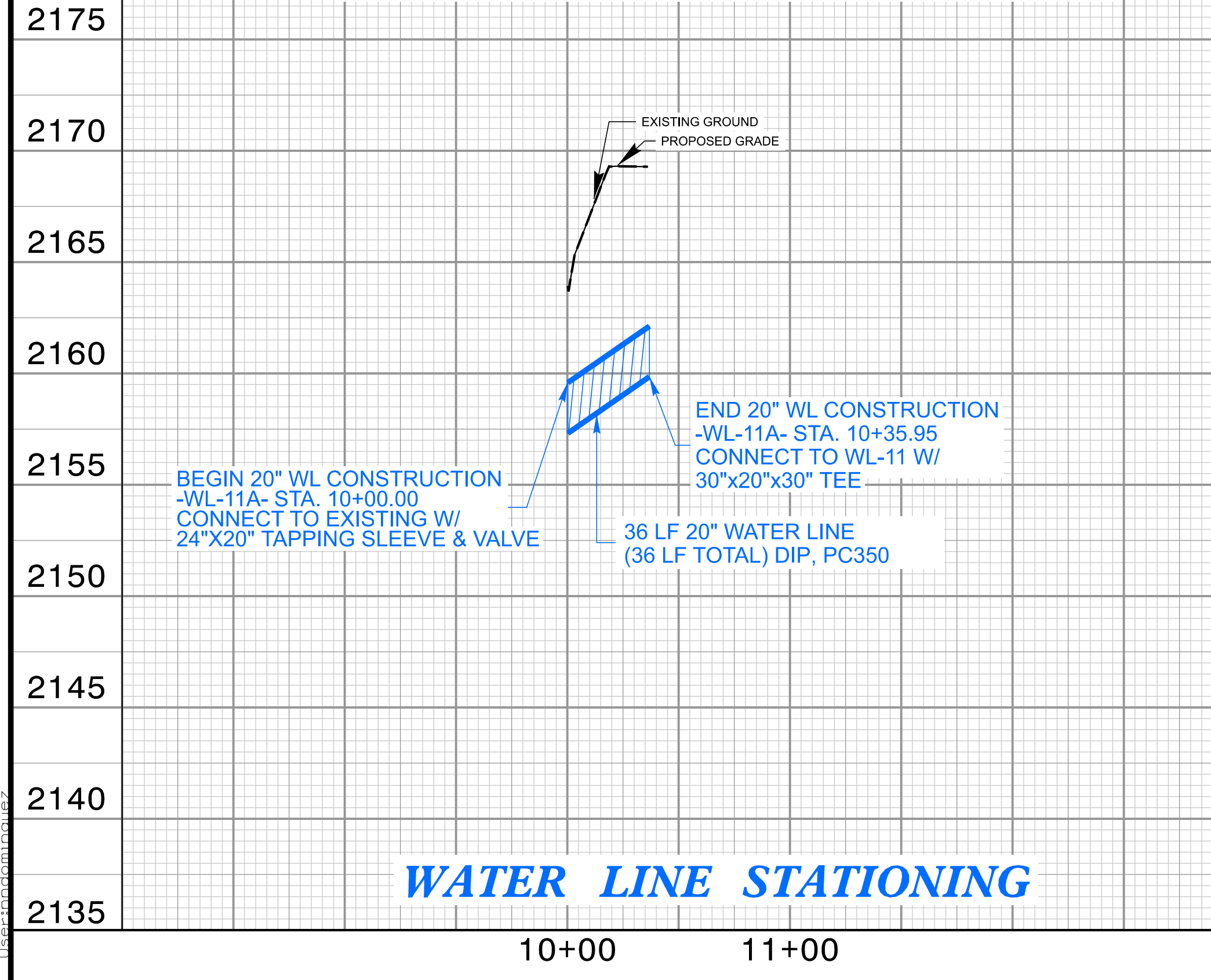
WATER LINE STATIONING

CONTRACTOR SHALL USE MECHANICAL RESTRAINTS OR FACTORY RESTRAINED PIPE
 30" WL-11 FROM STA. 10+00.00 TO STA. 12+47.00
 30" WL-11 FROM STA. 13+14.42 TO STA. 19+45.75
 20" WL-11A FROM STA. 10+00.00 TO STA. 10+36.09
 12" WL-14 FROM STA. 10+00.00 TO STA. 12+37.82
 12" WL-14 FROM STA. 13+18.00 TO STA. 15+93.47

PROJECT REFERENCE NO. U-5783	SHEET NO. UC-8B
DESIGNED BY: MRD	
DRAWN BY: MRD	
CHECKED BY: JDN	
APPROVED BY: JDN	
REVISED:	DATE: 5/1/2024 TIME: 5:50:43 PM EDT
NORTH CAROLINA DEPARTMENT OF TRANSPORTATION	
UTILITIES ENGINEERING SEC. PHONE: (919) 707-6690 FAX: (919) 250-4151	
UTILITY CONSTRUCTION PLANS ONLY	
DOCUMENT NOT CONSIDERED FINAL UNTIL ALL SIGNATURES ARE COMPLETED	
UTILITY CONSTRUCTION	

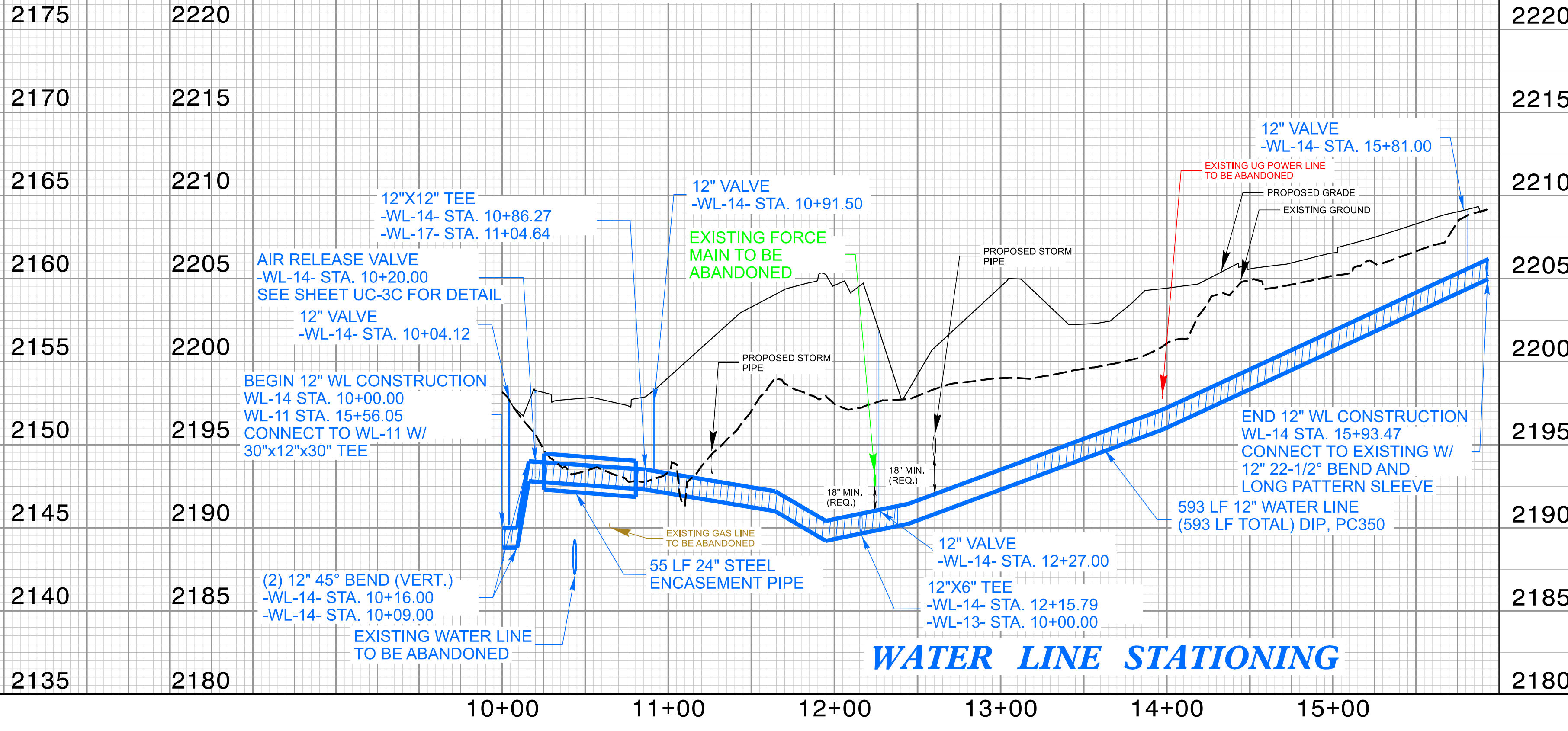


WATER LINE -WL-11A- PROFILE



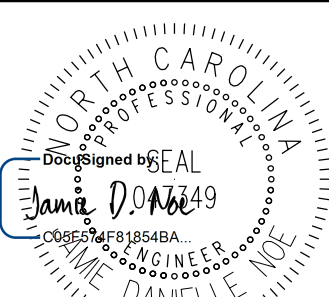
WATER LINE STATIONING

WATER LINE -WL-14- PROFILE



WATER LINE STATIONING

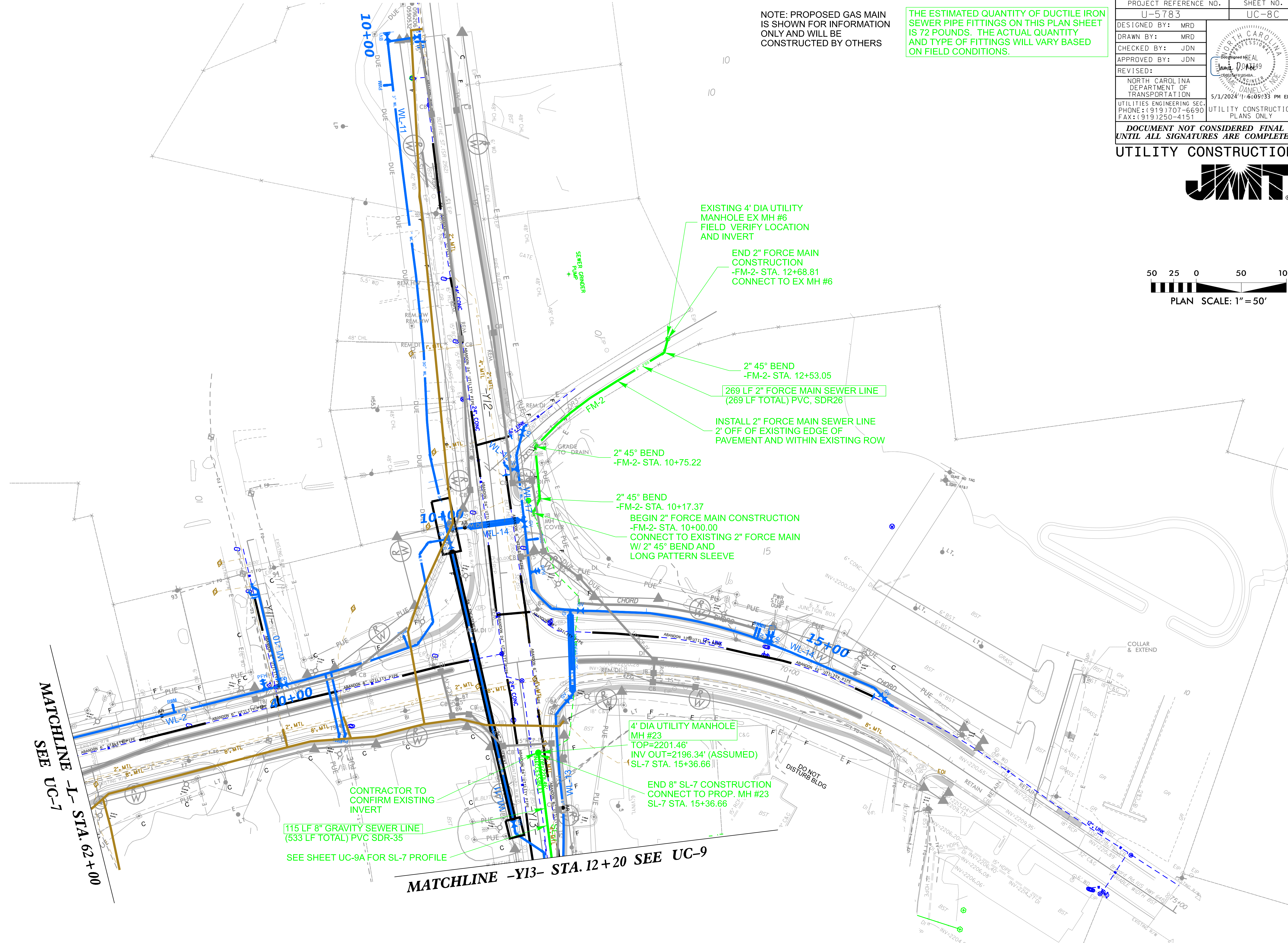
4/16/24
4/29/2024 12:32 PM
U-5783 UC-8B.dgn

PROJECT REFERENCE NO.	SHEET NO.
U-5783	UC-8C
DESIGNED BY: MRD	
DRAWN BY: MRD	
CHECKED BY: JDN	
APPROVED BY: JDN	
REVISED:	5/1/2024 11:16:05+33 PM EDT
NORTH CAROLINA DEPARTMENT OF TRANSPORTATION	UTILITY CONSTRUCTION PLANS ONLY
UTILITIES ENGINEERING SEC. PHONE: (919) 707-6690 FAX: (919) 250-4151	
DOCUMENT NOT CONSIDERED FINAL UNTIL ALL SIGNATURES ARE COMPLETED	
UTILITY CONSTRUCTION	



NOTE: PROPOSED GAS MAIN IS SHOWN FOR INFORMATION ONLY AND WILL BE CONSTRUCTED BY OTHERS

THE ESTIMATED QUANTITY OF DUCTILE IRON SEWER PIPE FITTINGS ON THIS PLAN SHEET IS 72 POUNDS. THE ACTUAL QUANTITY AND TYPE OF FITTINGS WILL VARY BASED ON FIELD CONDITIONS.



MATCHLINE -L- STA. 62+00
SEE UC-7

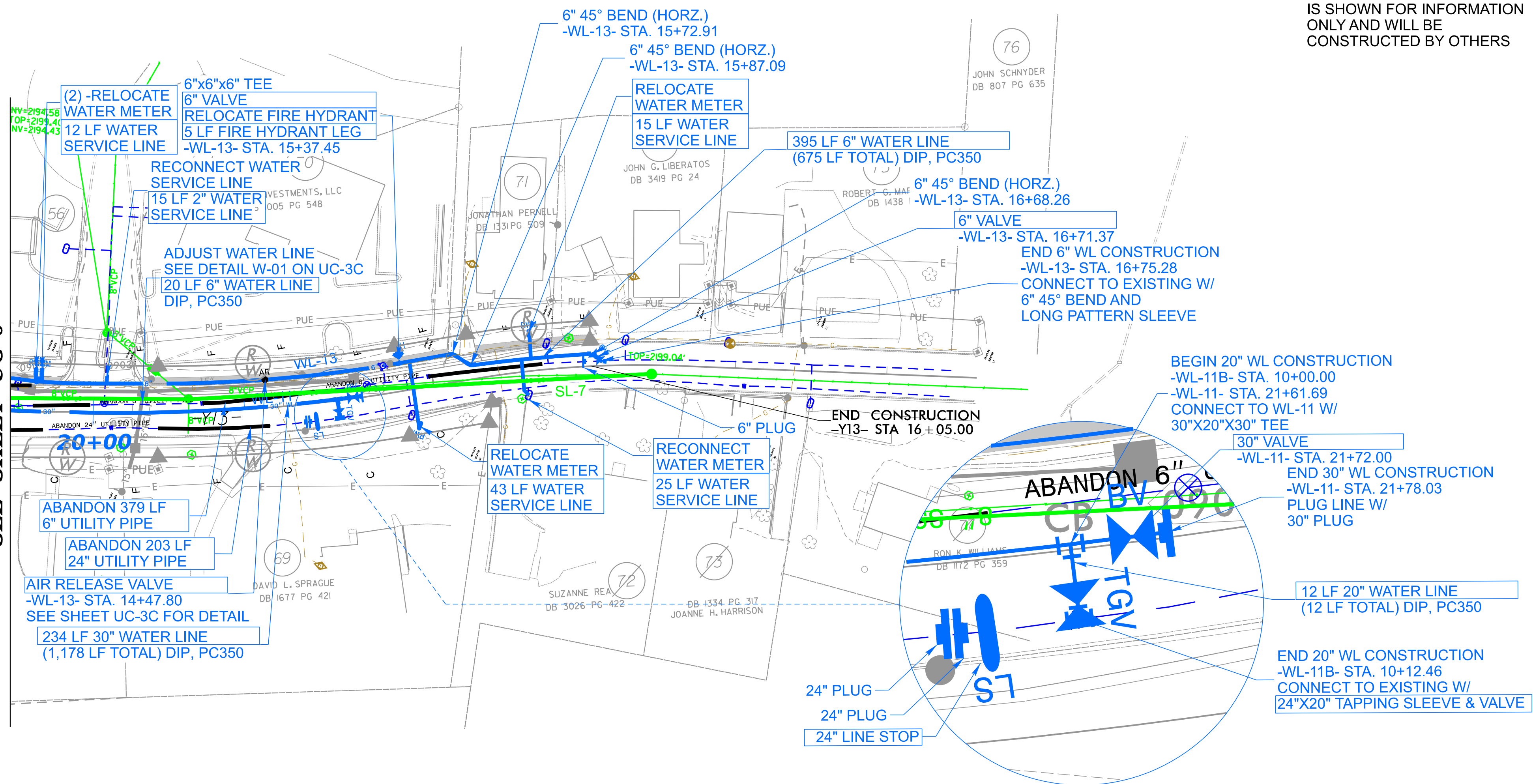
MATCHLINE -Y13- STA. 12+20 SEE UC-9

4/21/2024 4:27:05 PM I:\Projects\2023\UTIL_UC-8.dgn

4/18/24

REVISIONS

MATCHLINE -Y13- STA. 12+20
SEE SHEET UC-8



NOTE: PROPOSED GAS MAIN IS SHOWN FOR INFORMATION ONLY AND WILL BE CONSTRUCTED BY OTHERS

THE ESTIMATED QUANTITY OF DUCTILE IRON WATER PIPE FITTINGS ON THIS PLAN SHEET IS 3,935 POUNDS. THE ACTUAL QUANTITY AND TYPE OF FITTINGS WILL VARY BASED ON FIELD CONDITIONS.

PROJECT REFERENCE NO. U-5783 SHEET NO. UC-9

DESIGNED BY: MRD
DRAWN BY: MRD
CHECKED BY: JDN
APPROVED BY: JDN

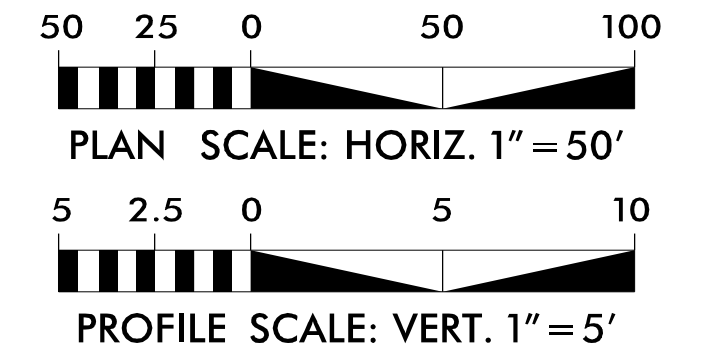
REVISED:

NORTH CAROLINA DEPARTMENT OF TRANSPORTATION
UTILITIES ENGINEERING SEC.
PHONE: (919) 707-6690
FAX: (919) 250-4151

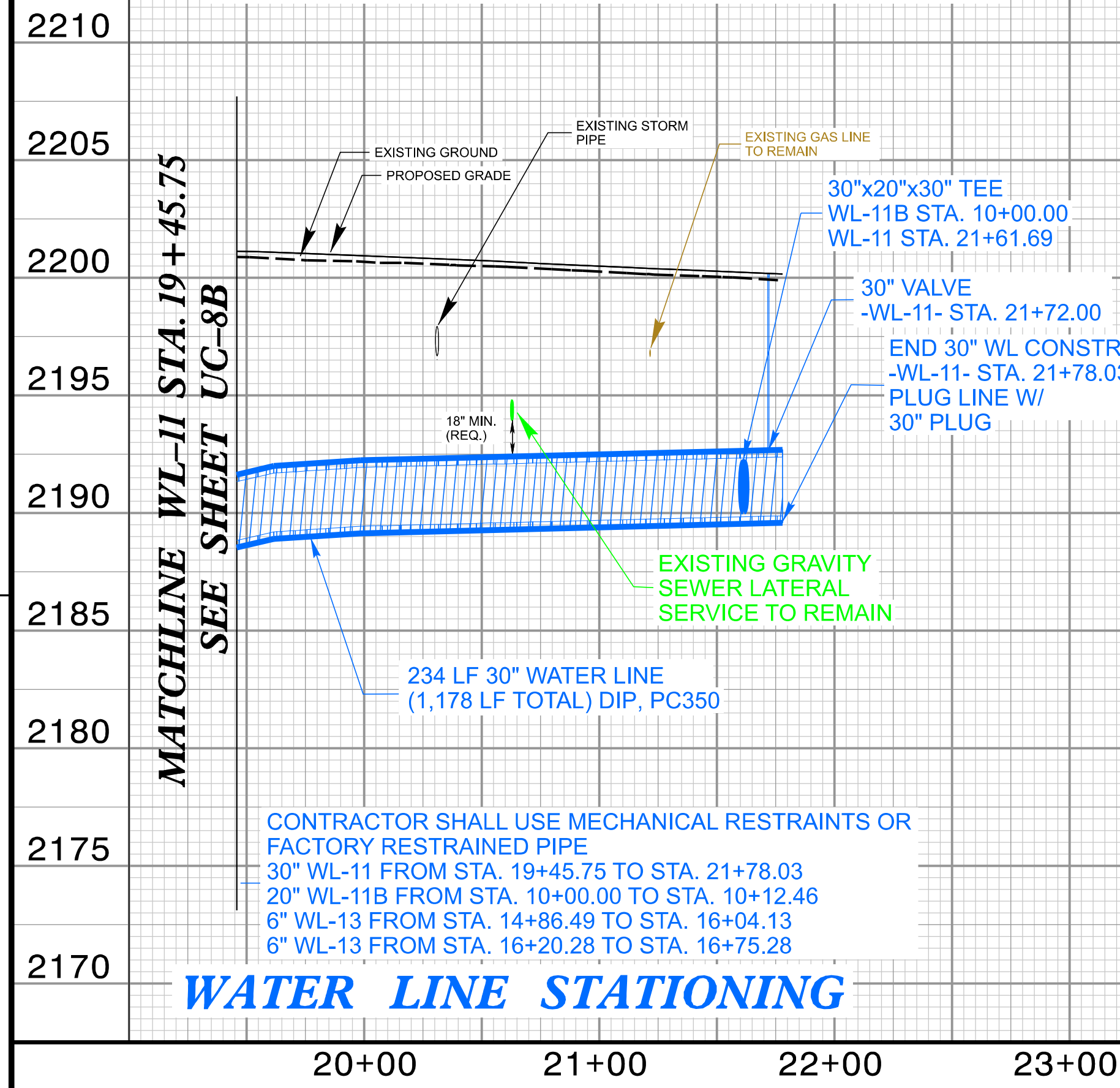
5/1/2024 11:41:55 AM EDT
UTILITY CONSTRUCTION PLANS ONLY

DOCUMENT NOT CONSIDERED FINAL
UNTIL ALL SIGNATURES ARE COMPLETED

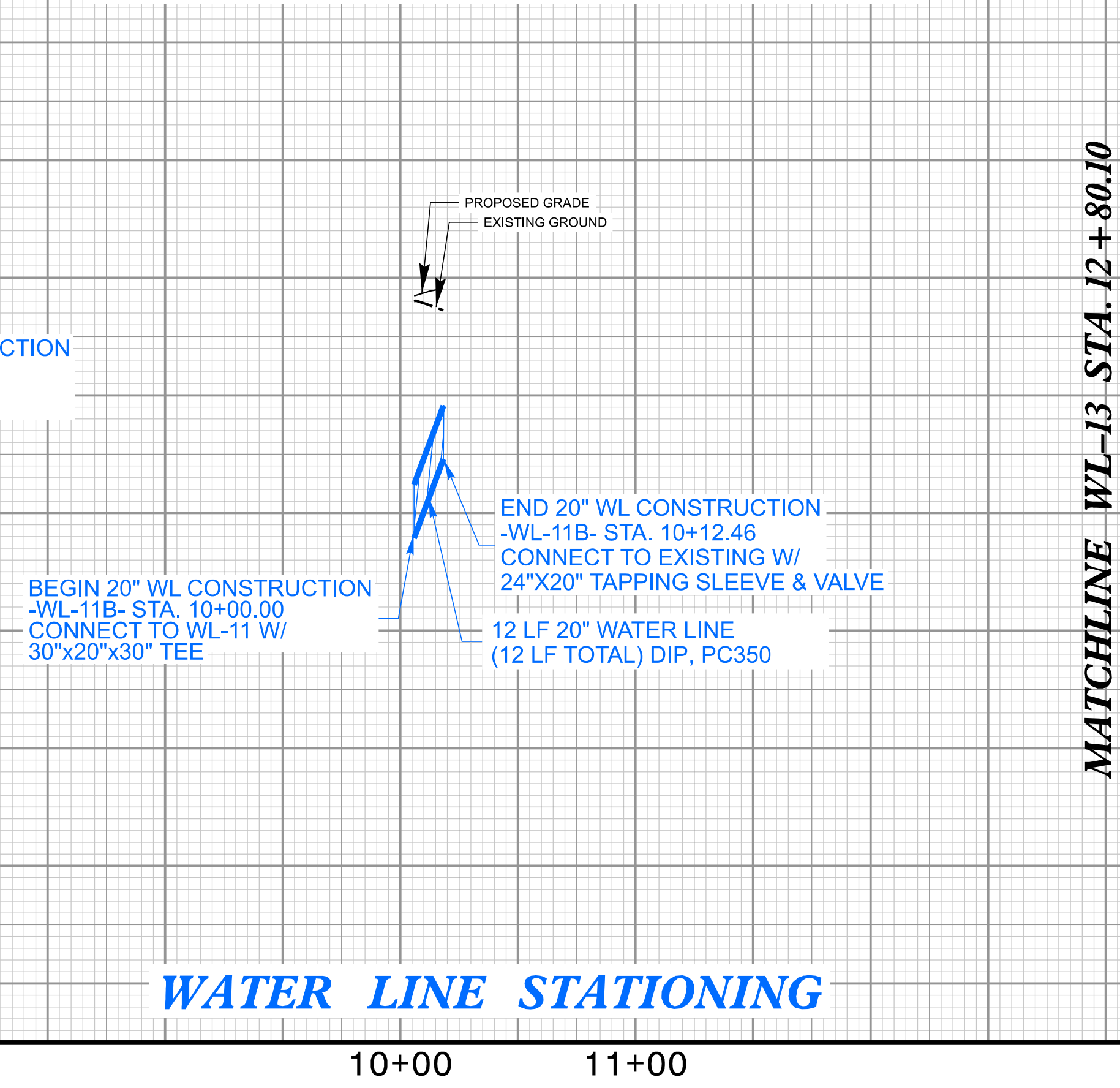
UTILITY CONSTRUCTION



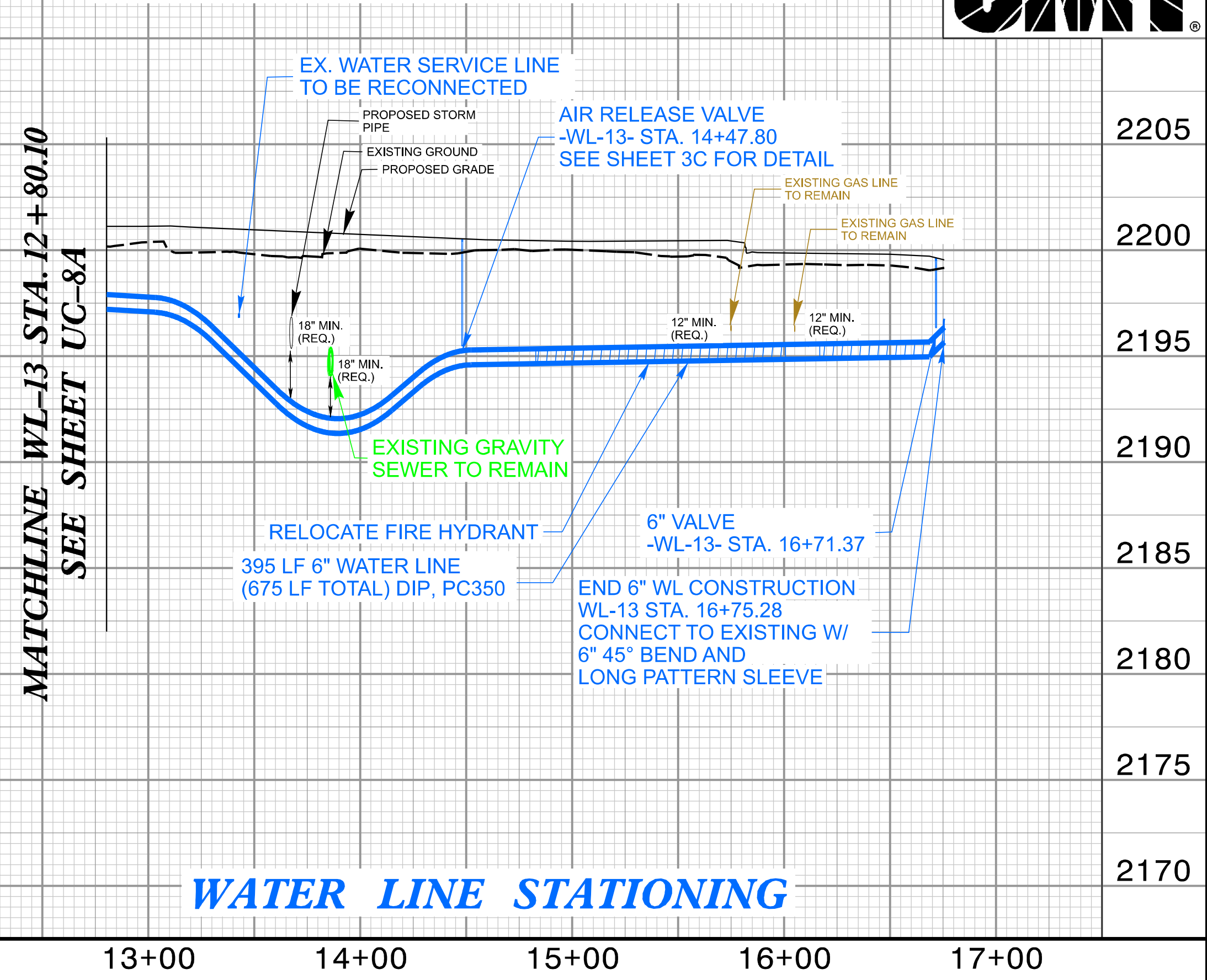
WATER LINE -WL-11- PROFILE



WATER LINE -WL-11B- PROFILE



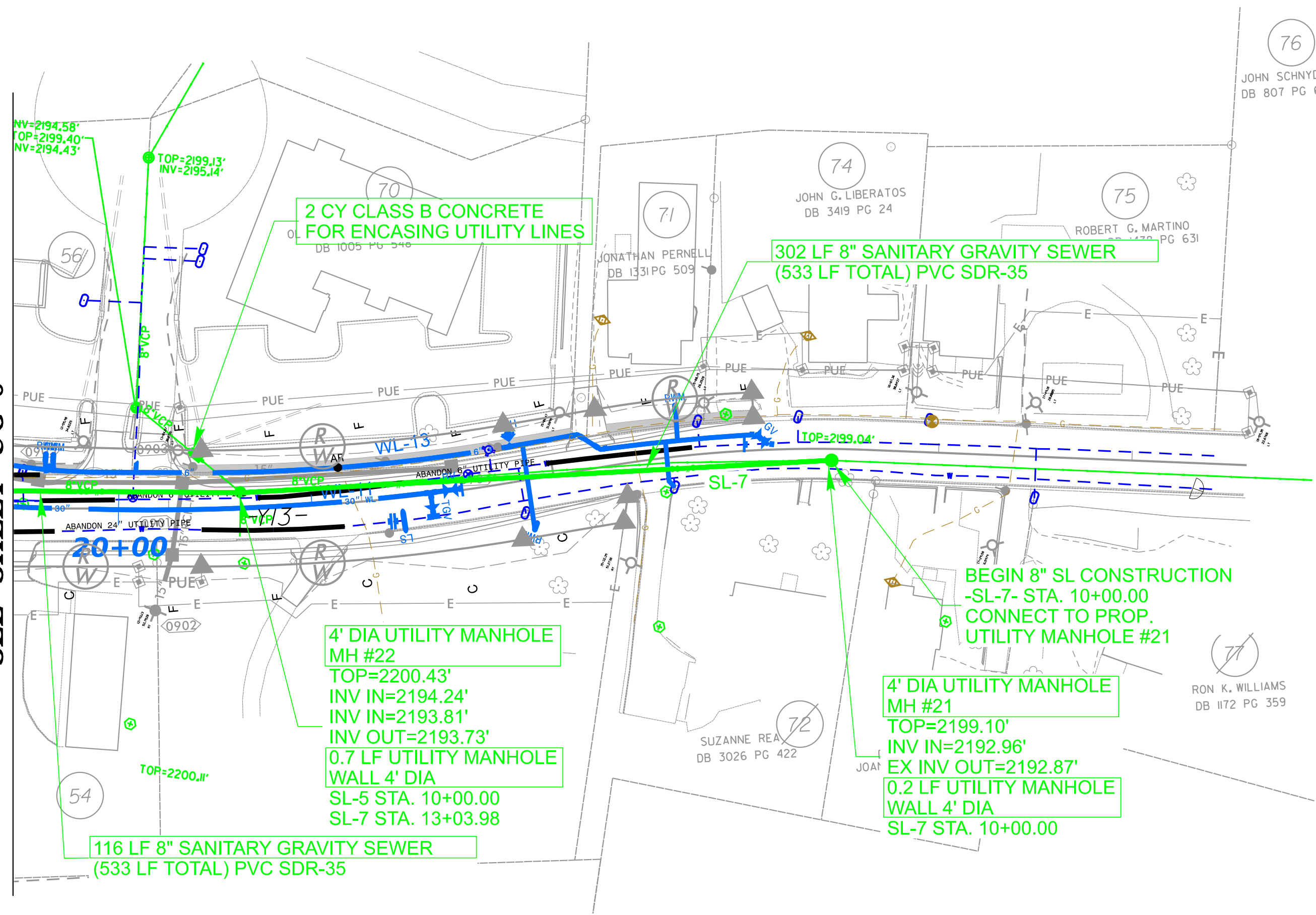
WATER LINE -WL-13- PROFILE



4/16/24

REVISIONS

MATCHLINE -Y13- STA. 12+20
SEE SHEET UC-8



NOTE: PROPOSED GAS MAIN IS SHOWN FOR INFORMATION ONLY AND WILL BE CONSTRUCTED BY OTHERS

PROJECT REFERENCE NO. U-5783 SHEET NO. UC-9A

DESIGNED BY: MRD
DRAWN BY: MRD
CHECKED BY: JDN
APPROVED BY: JDN
REVISED:

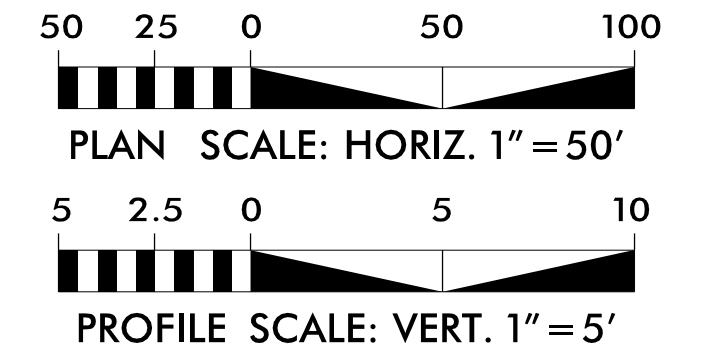
NORTH CAROLINA DEPARTMENT OF TRANSPORTATION
UTILITIES ENGINEERING SEC.
PHONE: (919) 707-6690
FAX: (919) 250-4151

UTILITY CONSTRUCTION PLANS ONLY

5/1/2024 11:41:05 AM EDT

DOCUMENT NOT CONSIDERED FINAL UNTIL ALL SIGNATURES ARE COMPLETED

UTILITY CONSTRUCTION



SEWER LINE -SL-7- PROFILE

SEWER LINE -SL-5- PROFILE

