

T.I.P.: U-5783

CONTRACT: C204937

STATE OF NORTH CAROLINA
DEPARTMENT OF TRANSPORTATION

SIGNING PLAN
HENDERSON COUNTY

LOCATION: US 64 (BREVARD ROAD) FROM SR 1173 (WHITE PINE DRIVE)
TO SR 2162 (BLYTHE STREET)

ROADWAY STANDARD DRAWING

THE FOLLOWING ROADWAY STANDARDS AS APPEAR IN "ROADWAY STANDARD DRAWINGS" - PROJECT SERVICES UNIT - N.C. DEPARTMENT OF TRANSPORTATION - RALEIGH, N.C., DATED JANUARY 2024 ARE APPLICABLE TO THIS PROJECT AND BY REFERENCE HEREBY ARE CONSIDERED A PART OF THESE PLANS:

STD. NO.	TITLE
904.10	ORIENTATION OF GROUND MOUNTED SIGNS
904.50	MOUNTING OF TYPE 'D', 'E', AND 'F' SIGNS ON 'U' CHANNEL SUPPORTS
910.20	SIGNING SCHOOL ZONE WITH MARKED CROSSWALK WHERE SPEED REDUCTION IS REQUIRED
910.30	SIGNING UNSIGNALIZED REDUCED CONFLICT INTERSECTION
910.40	SINGLE LANE ROUNDABOUT SIGNING, WITH PEDESTRIANS
910.50	SIGNING FOR SPEED REDUCTION ZONE

GENERAL NOTES

- SIGNS FURNISHED BY CONTRACTOR
- ALL TYPE 'D' SIGNS SHALL BE MOUNTED ON TWO U-CHANNEL POSTS UNLESS OTHERWISE INDICATED ON THE PLANS.
- IF REMOVAL OR RELOCATION OF SIGNS ON PRIVATE STREET (NON-STATE MAINTAINED) IS REQUIRED DUE TO CONSTRUCTION, THE CONTRACTOR SHALL INFORM THE ENGINEER. THE WORK WILL BE COMPLETED BY OTHERS.
- WHEN NOT STATIONED OR DIMENSIONED ON PLANS, ALL 'E' AND 'F' SIGNS SHALL BE FIELD LOCATED BY THE ENGINEER
- ALL EXISTING SIGNS ON "U" CHANNEL POST WITHIN THE PROJECT LIMITS SHALL BE REMOVED AND DISPOSED OF UNLESS OTHERWISE NOTED ON PLANS.
- WHEN EXISTING SIGNS ARE REMOVED AND INSTALLED ON NEW SUPPORTS, THE RE-ERECTION SHALL IMMEDIATELY FOLLOW THE REMOVAL.
- THE BACKGROUND FOR TYPE E & F SIGNS SHALL BE TYPE C REFLECTIVE SHEETING.
- DO NOT BEGIN FABRICATION FOR TYPES A & B SIGNS MOUNTED ON OVERHEAD STRUCTURES OR STEEL SUPPORTS UNTIL "S" DIMENSIONS HAVE BEEN FIELD VERIFIED.
- SEE ROADWAY PLANS FOR GUARD/GUIDE RAIL DETAILS.

SUMMARY OF QUANTITIES

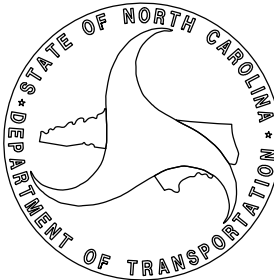
ITEM NO.		ITEM DESCRIPTION	QUANTITY	UNIT
DESC. NO.	SECT. NO.			
4025000000-E	901	CONTRACTOR FURNISHED, TYPE D SIGN	3.66	SF
4025000000-E	901	CONTRACTOR FURNISHED, TYPE E SIGN	611.77	SF
4025000000-E	901	CONTRACTOR FURNISHED, TYPE F SIGN	6.00	SF
4072000000-E	903	SUPPORTS, 3-LB STEEL U-CHANNEL	1275.0	LF
4096000000-N	904	SIGN ERECTION, TYPE D	4	EA
4102000000-N	904	SIGN ERECTION, TYPE E	152	EA
4108000000-N	904	SIGN ERECTION, TYPE F	1	EA
4116100000-N	904	SIGN ERECTION, RELOCATE TYPE D (GROUND MOUNTED)	29	EA
4155000000-N	907	DISPOSAL OF SIGN SYSTEM, U-CHANNEL	34	EA
4192000000-N	907	DISPOSAL OF SUPPORT, U-CHANNEL	32	EA

INDEX

SHEET NO.	DESCRIPTION
SIGN-1	TITLE SHEET
SIGN-2-2B	SIGN DESIGNS, TYPE 'E' AND 'F' SIGNS
SIGN-3-3E	SIGN DETAIL SHEETS

PLAN SUBMITTED TO:

Kenneth McDowell – NCDOT Division 14 Assistant Design Construction Engineer



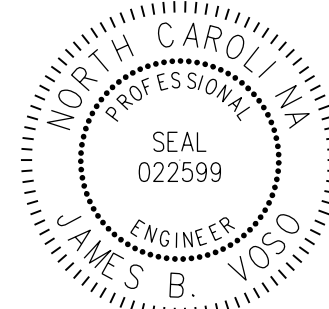
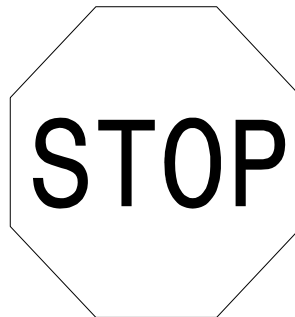



PLAN PREPARED BY: Mattern & Craig

Kyle Eudy Project Design Engineer
James Voso Project Engineer



TIP NO.	SHEET NO.
U-5783	SIGN-1
APPROVED: <div>DocuSigned by: James Voso 140FD6037ED041F...</div>	
DATE: 7/15/2024	
SEAL <div>Seal of James B. Voso, Professional Engineer, Seal 022599</div>	
DOCUMENT NOT CONSIDERED FINAL UNLESS ALL SIGNATURES COMPLETED	

TIP NO. U-5783		SHEET NO. SIGN-2		APPROVED: <div>DocuSigned by: James Voso 140FD60379E041F</div>		
DATE: _____		4/1/2024		SEAL <div>SEAL 022599 NORTH CAROLINA PROFESSIONAL ENGINEER JAMES B. VOSO</div>		
DOCUMENT NOT CONSIDERED FINAL UNLESS ALL SIGNATURES COMPLETED						
<div>401</div> QUANTITY REQ'D .1__ <div><div>SPEED LIMIT 40</div><div>24 X 30 R2-1</div></div> ONE "U" POST PER SIGN	<div>402</div> QUANTITY REQ'D .28__ <div><div>STATE LAW TO WITHIN CROSSWALK</div><div>12 X 36 R1-6</div></div> YELLOW/GREEN REFLECTIVE SHEETING ONE "U" POST PER SIGN ASSEMBLY	<div>403</div> QUANTITY REQ'D .14__ <div><div></div><div>30 X 24 R6-4</div></div> ONE "U" POST PER SIGN	<div>404</div> QUANTITY REQ'D .15__ <div><div>YIELD</div><div>36 X 36 X 36 R1-2</div></div> ONE "U" POST PER SIGN	<div>405</div> QUANTITY REQ'D .2__ <div><div></div><div>30 X 30 W2-6</div></div> ONE "U" POST PER SIGN	<div>406</div> QUANTITY REQ'D .1__ <div><div><div>↑</div><div>SPEED LIMIT 35</div></div><div>36 X 36 W3-5</div></div> ONE "U" POST PER SIGN	
<div>407</div> QUANTITY REQ'D .2__ <div><div></div><div>30 X 30 W3-2</div></div> ONE "U" POST PER SIGN	<div>408</div> QUANTITY REQ'D .4__ <div><div></div><div>36 X 36 W11-2</div></div> YELLOW/GREEN REFLECTIVE SHEETING ONE "U" POST PER SIGN	<div>409</div> QUANTITY REQ'D .4__ <div><div></div><div>24 X 12 W16-7PL</div></div> YELLOW/GREEN REFLECTIVE SHEETING MOUNT BELOW SIGN 408	<div>410</div> QUANTITY REQ'D .4__ <div><div></div><div>18 X 18 W3-1</div></div> ONE "U" POST PER SIGN	<div>411</div> QUANTITY REQ'D .4__ <div><div>STOP</div><div>18 X 18 R1-1</div></div> MOUNT WITH SIGNS 301 AND 302	<div>412</div> QUANTITY REQ'D .4__ <div><div>NO MOTOR VEHICLES</div><div>24 X 24 W3-1</div></div> ONE "U" POST PER SIGN	<div>413</div> QUANTITY REQ'D .1__ <div><div></div><div>30 X 30 W11-8</div></div> ONE "U" POST PER SIGN
<div>414</div> QUANTITY REQ'D .5__ <div><div>SPEED LIMIT 35</div><div>24 X 30 R2-1</div></div> ONE "U" POST PER SIGN	<div>415</div> QUANTITY REQ'D .1__ <div><div></div><div>24 X 24 W3-1</div></div> ONE "U" POST PER SIGN	<div>416</div> QUANTITY REQ'D .4__ <div><div>SPEED LIMIT 25</div><div>24 X 30 R2-1</div></div> ONE "U" POST PER SIGN	<div>417</div> QUANTITY REQ'D .7__ <div><div>ONE WAY</div><div>36 X 12 R6-1</div></div> TWO "U" POSTS PER SIGN	<div>418</div> QUANTITY REQ'D .7__ <div><div>STOP</div><div>30 X 30 R1-1</div></div> MOUNT BELOW SIGN 417	<div>419</div> QUANTITY REQ'D .2__ <div><div>STOP</div><div>30 X 30 R1-1</div></div> ONE "U" POST PER SIGN	<div>420</div> QUANTITY REQ'D .4__ <div><div></div><div>30 X 30 W12-1</div></div> ONE "U" POST PER SIGN
<div>421</div> QUANTITY REQ'D .1__ <div><div></div><div>30 X 30 W2-2</div></div> ONE "U" POST PER SIGN	<div>422</div> QUANTITY REQ'D .1__ <div><div></div><div>30 X 30 W11-3</div></div> ONE "U" POST PER SIGN	<div>423</div> QUANTITY REQ'D .1__ <div><div></div><div>30 X 30 W1-2</div></div> ONE "U" POST PER SIGN	<div>424</div> QUANTITY REQ'D .4__ <div><div></div><div>18 X 24 W1-8</div></div> ONE "U" POST PER SIGN	<div>425</div> QUANTITY REQ'D .4__ <div><div></div><div>18 X 24 W1-8</div></div> MOUNT ON REVERSE OF SIGN 424	<div>426</div> QUANTITY REQ'D .2__ <div><div>NO OUTLET</div><div>30 X 30 W14-2</div></div> ONE "U" POST PER SIGN	<div>427</div> QUANTITY REQ'D .2__ <div><div>ONE WAY</div><div>36 X 12 R6-1</div></div> TWO "U" POSTS PER SIGN
<div>428</div> QUANTITY REQ'D .1__ <div><div></div><div>30 X 30 W1-2</div></div> ONE "U" POST PER SIGN	<div>429</div> QUANTITY REQ'D .1__ <div><div><div>SCHOOL</div><div>SPEED LIMIT 20</div></div><div>36 X 36 S4-5</div></div> YELLOW/GREEN REFLECTIVE SHEETING ONE "U" POSTS PER SIGN	<div>430</div> QUANTITY REQ'D .1__ <div><div></div><div>36 X 36 S1-1</div></div> YELLOW/GREEN REFLECTIVE SHEETING ONE "U" POSTS PER SIGN	<div>431</div> QUANTITY REQ'D .1__ <div><div>SCHOOL</div><div>24 X 8 S4-3P</div></div> YELLOW/GREEN REFLECTIVE SHEETING POST BELOW SIGN 430	<div>432</div> QUANTITY REQ'D .1__ <div><div></div><div>30 X 30 W3-3</div></div> TWO "U" POSTS PER SIGN	TYPE "E" SIGNS	

						<div>TIP NO. U-5783</div> <div>SHEET NO. SIGN-2A</div> <div>APPROVED: <div>DocuSigned by: James Vasa 140FD60379E041F...</div></div> <div>DATE: 4/1/2024</div> <div>SEAL </div> <div>DOCUMENT NOT CONSIDERED FINAL UNLESS ALL SIGNATURES COMPLETED</div>
<div>433</div> <div>QUANTITY REQ'D .1</div> <div><div>30 X 30 R1-1</div></div> <div>ONE "U" POST PER SIGN</div>	<div>434</div> <div>QUANTITY REQ'D .1</div> <div><div>12 X 18 R7-1</div></div> <div>ONE "U" POST PER SIGN</div>	<div>435</div> <div>QUANTITY REQ'D .8</div> <div><div>24 X 18 R3-17</div></div> <div>ONE "U" POST PER SIGN</div>	<div>436</div> <div>QUANTITY REQ'D .8</div> <div><div>24 X 8 R3-17b</div></div> <div>MOUNT BELOW SIGN 435</div>			
<div>501</div> <div><div><div>WEST</div><div>64</div></div><div>1 - 24 X 12 1 - 24 X 24</div></div> <div>ONE "U" POST PER SIGN</div>						
TYPE "E" AND "F" SIGNS						

[illegible]

SIGN DESIGNS

TIP NO.
U-5783

SHEET NO.
SIGN-3

APPROVED:

DocuSigned by:
James Voso
140F09379E041F...

4/1/2024

DATE:

4/1/2024

SEAL

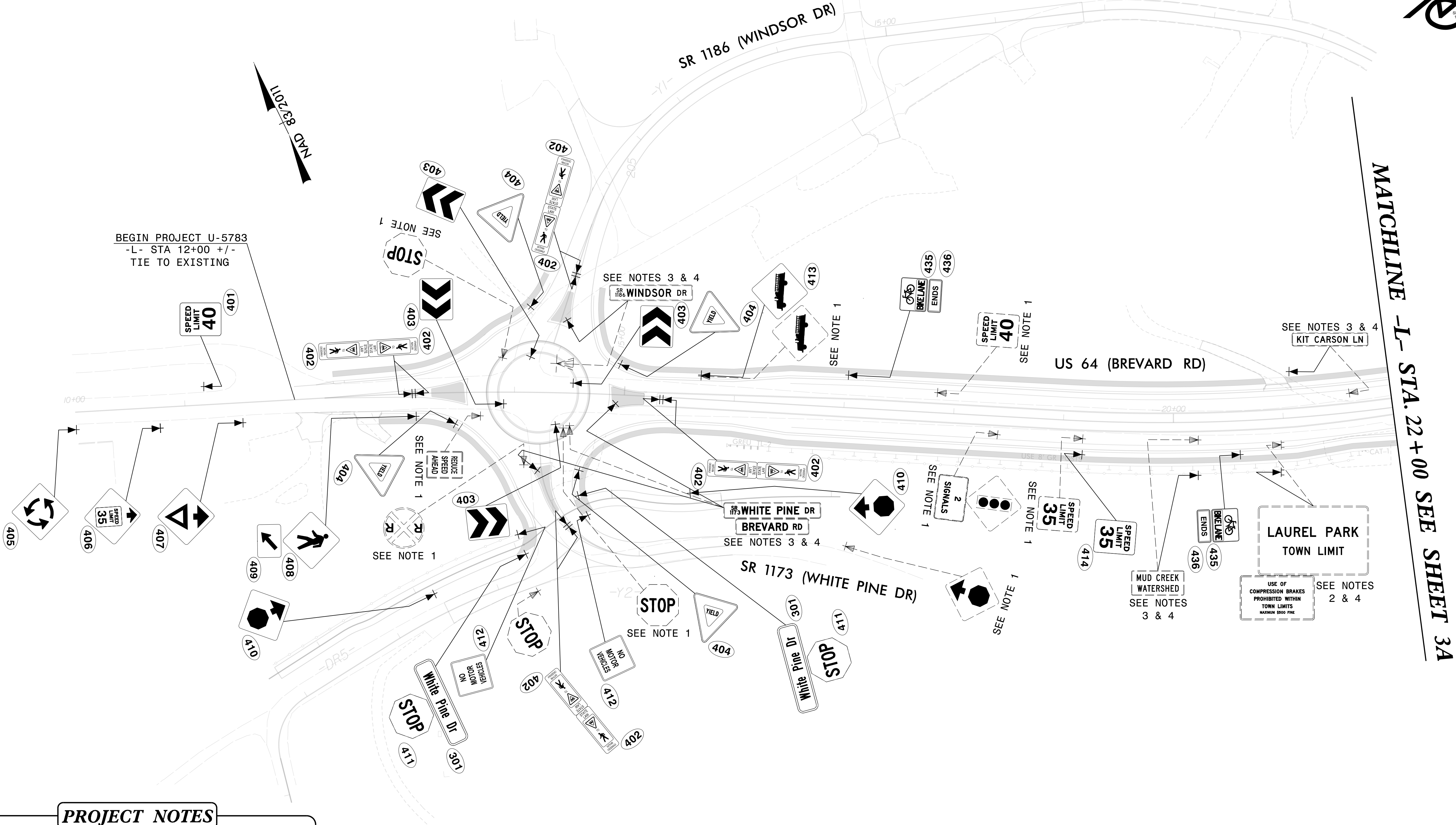
NORTH CAROLINA
PROFESSIONAL
SEAL
022599
ENGINEER
JAMES B. VOSO

DOCUMENT NOT CONSIDERED FINAL
UNLESS ALL SIGNATURES COMPLETED

SHOULD BE USED

Mattern & Craig

ENGINEERS • SURVEYORS
FIRM LICENSE No. C-1154
12 BROAD STREET
ASHEVILLE, NORTH CAROLINA 28801
(828) 254-2201
FAX (828) 254-4562



PROJECT NOTES

1. DISPOSAL OF SIGN SYSTEM, U CHANNEL
2. SIGN ERECTION, RELOCATED, TYPE "D" SIGN
3. SIGN ERECTION, RELOCATED, TYPE "E" SIGN
4. DISPOSAL OF SUPPORT, U CHANNEL

SIGN DETAIL SHEET

TIP NO.
U-5783

SHEET NO.
SIGN-3B

DocuSigned by:
James Voso
140FD60379E041F

APPROVED: 4/1/2024

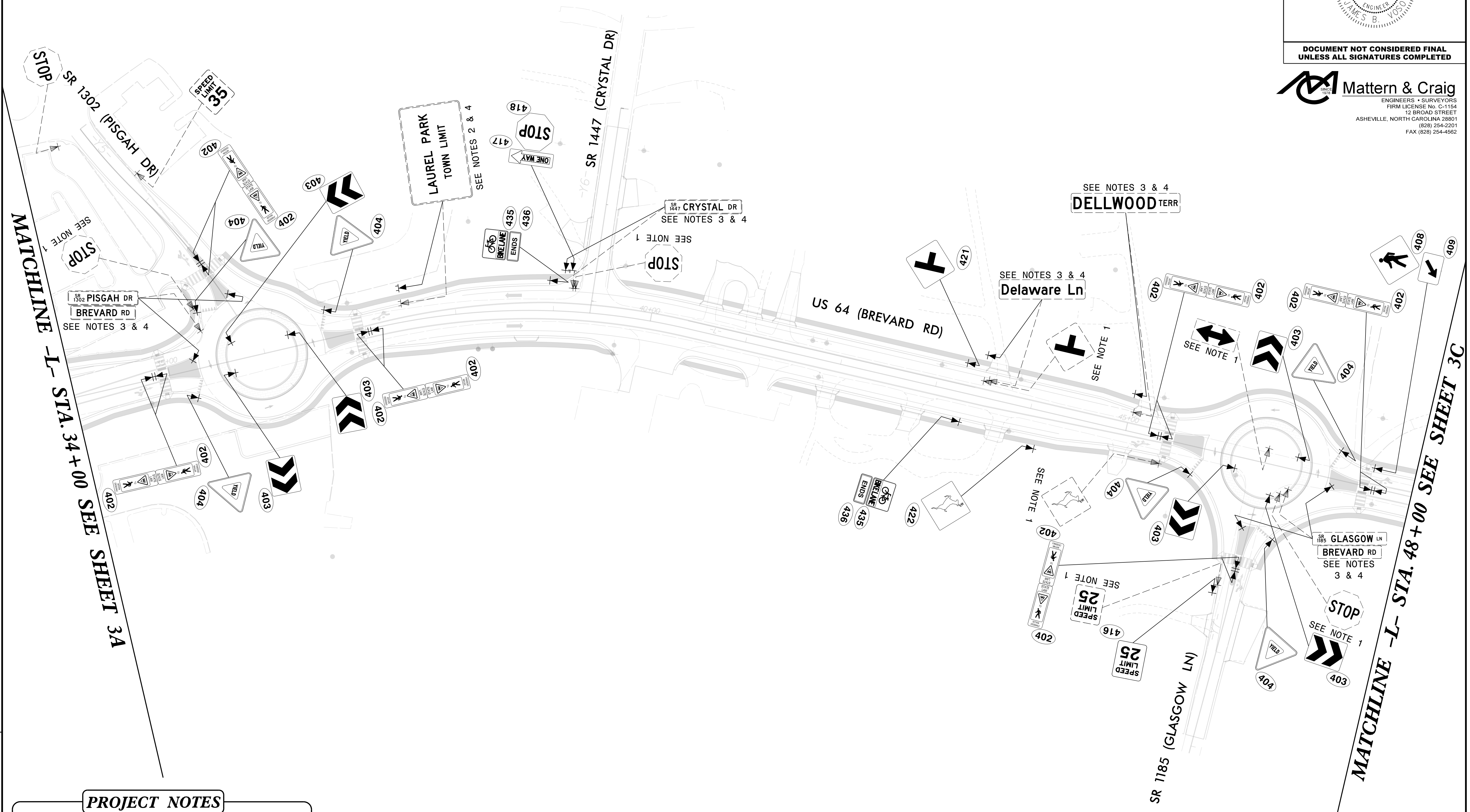
DATE:

SEAL

DOCUMENT NOT CONSIDERED FINAL
UNLESS ALL SIGNATURES COMPLETED

Mattern & Craig

ENGINEERS • SURVEYORS
FIRM LICENSE No. C-1154
12 BROAD STREET
ASHEVILLE, NORTH CAROLINA 28801
(828) 254-2201
FAX (828) 254-4562



- PROJECT NOTES
1. DISPOSAL OF SIGN SYSTEM, U CHANNEL

2. SIGN ERECTION, RELOCATED, TYPE "D" SIGN

3. SIGN ERECTION, RELOCATED, TYPE "E" SIGN

4. DISPOSAL OF SUPPORT, U CHANNEL

SIGN DETAIL SHEET

REVISIONS

1

2

3

4

5

6

7

8

9

10

11

12

13

14

15

16

17

18

19

20

21

22

23

24

25

26

27

28

29

30

31

32

33

34

35

36

37

38

39

40

41

42

43

44

45

46

47

48

49

50

51

52

53

54

55

56

57

58

59

60

61

62

63

64

65

66

67

68

69

70

71

72

73

74

75

76

77

78

79

80

81

82

83

84

85

86

87

88

89

90

91

92

93

94

95

96

97

98

99

100

TIP NO.
U-5783

SHEET NO.
SIGN-3C

DocuSigned by:
James Voso
140FDB0370E041F...

APPROVED:

DATE: 4/1/2024

SEAL

NORTH CAROLINA
PROFESSIONAL
ENGINEER
JAMES B. VOSO
SEAL 022599

DOCUMENT NOT CONSIDERED FINAL
UNLESS ALL SIGNATURES COMPLETED

Mattern & Craig

ENGINEERS • SURVEYORS

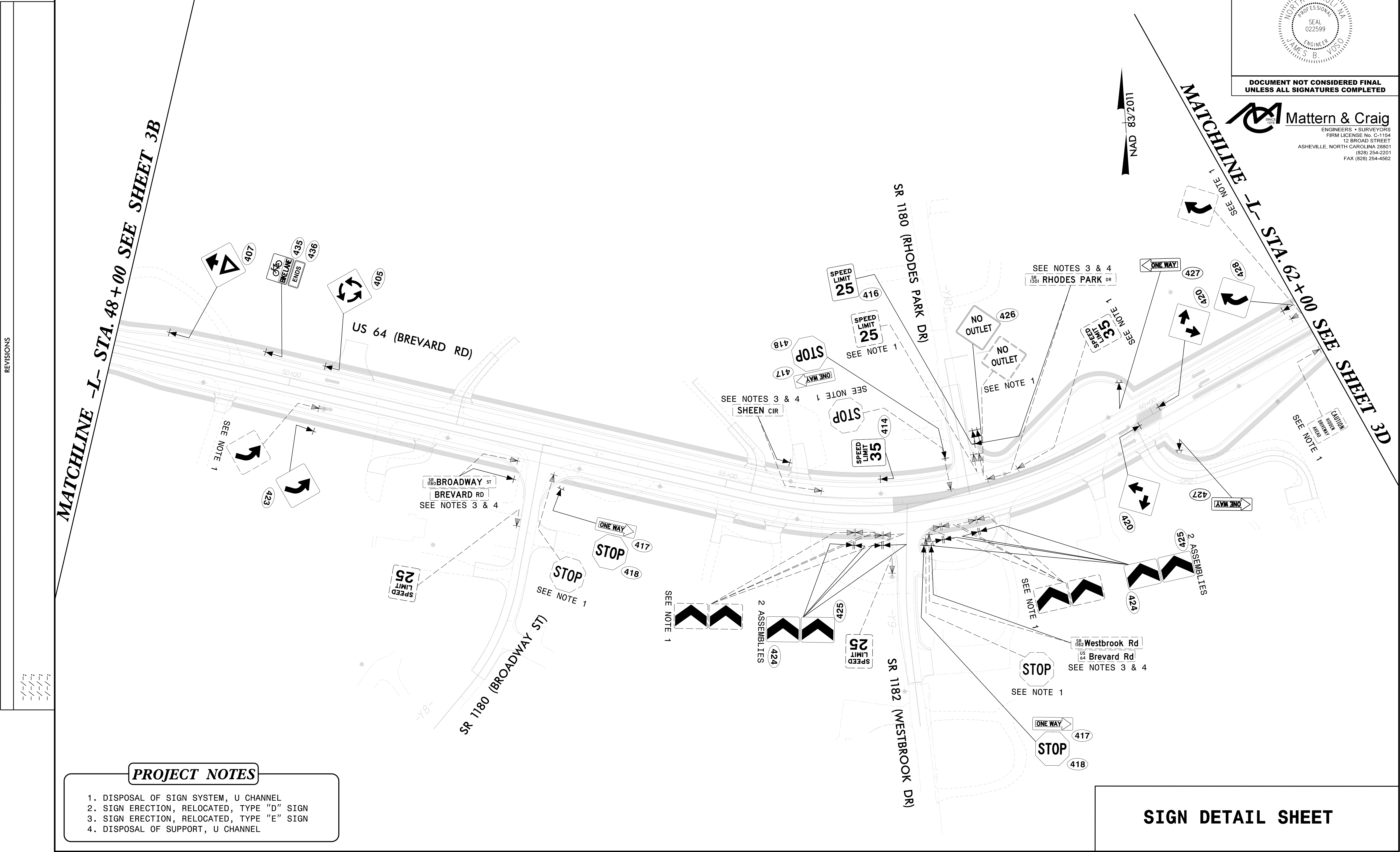
FIRM LICENSE No. C-1154

12 BROAD STREET

ASHEVILLE, NORTH CAROLINA 28801

(828) 254-2201

FAX (828) 254-4562



TIP NO.
U-5783

SHEET NO.
SIGN-3D

APPROVED: *James Voso*

DATE: 4/1/2024

SEAL

NORTH CAROLINA

PROFESSIONAL

SEAL

022599

ENGINEER

JAMES B. VOSO

DOCUMENT NOT CONSIDERED FINAL

UNLESS ALL SIGNATURES COMPLETED



Mattern & Craig
ENGINEERS • SURVEYORS
FIRM LICENSE NO. C-1154
12 BROAD STREET
ASHEVILLE, NORTH CAROLINA 28801
(828) 254-2201
FAX (828) 254-4562



MATCHLINE -L- STA. 62+00 SEE SHEET 3C

PROJECT NOTES

1. DISPOSAL OF SIGN SYSTEM, U CHANNEL
2. SIGN ERECTION, RELOCATED, TYPE "D" SIGN
3. SIGN ERECTION, RELOCATED, TYPE "E" SIGN
4. DISPOSAL OF SUPPORT, U CHANNEL

MATCHLINE -Y13- STA. 12+20 SEE SHEET 3E

HENDERSONVILLE
CITY LIMIT

LAURELWOOD CIR. WEST
SEE NOTES 3 & 4

SR 2162 (BLYTHE ST)

Woodmont Dr

STOP

SPEED LIMIT 35

SEE NOTE 1

SEE NOTES 3 & 4
SR 1180 Blythe St
US 64 Brevard Rd

US 64 (BREVARD RD)

SCHOOL

SPEED LIMIT 35

SEE NOTE 1

END PROJECT U-5783
-L- STA 73+62 +/-
TIE TO EXISTING

NOTES:

 =SIGNALIZED INTERSECTION

SIGN DETAIL SHEET

