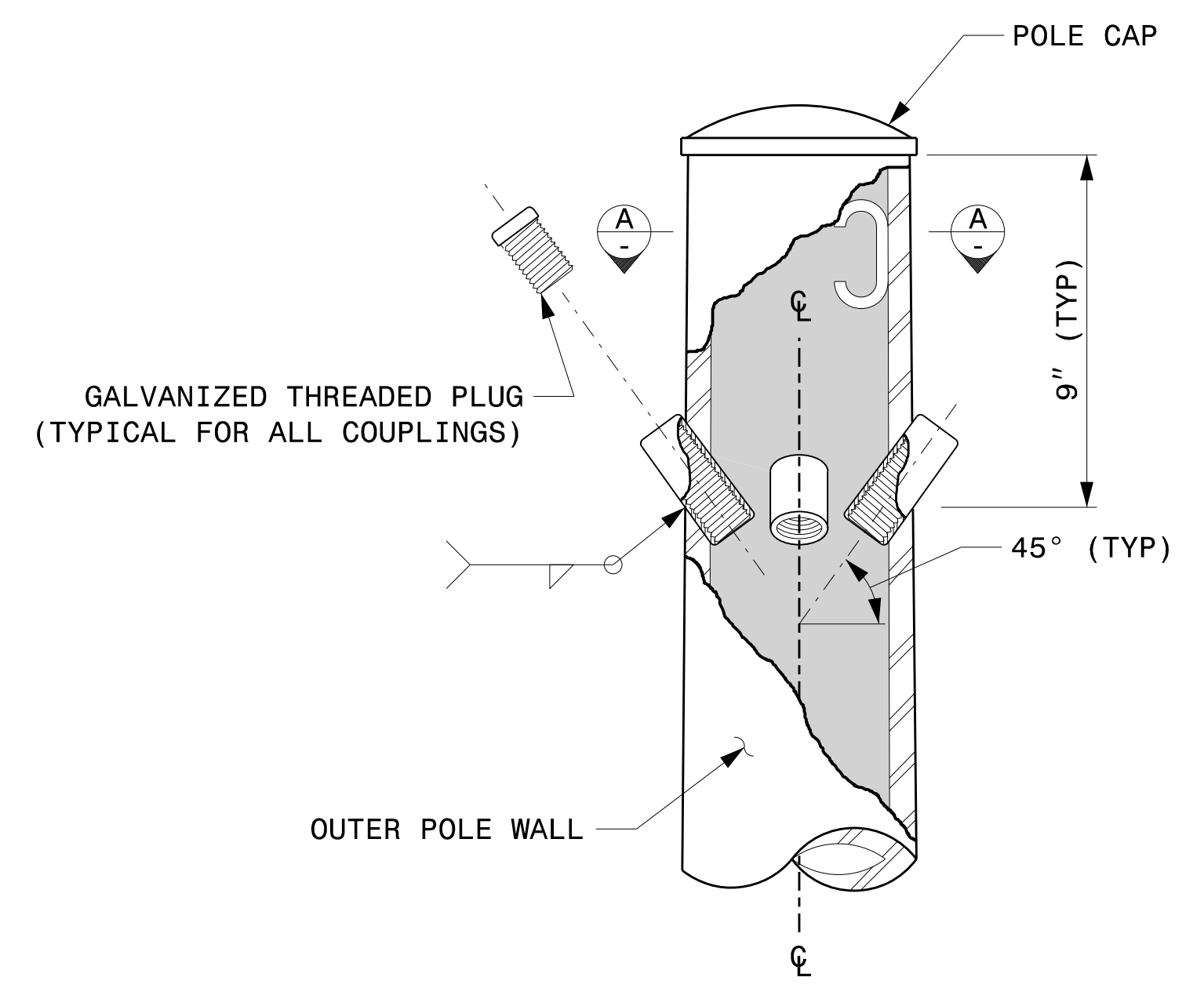
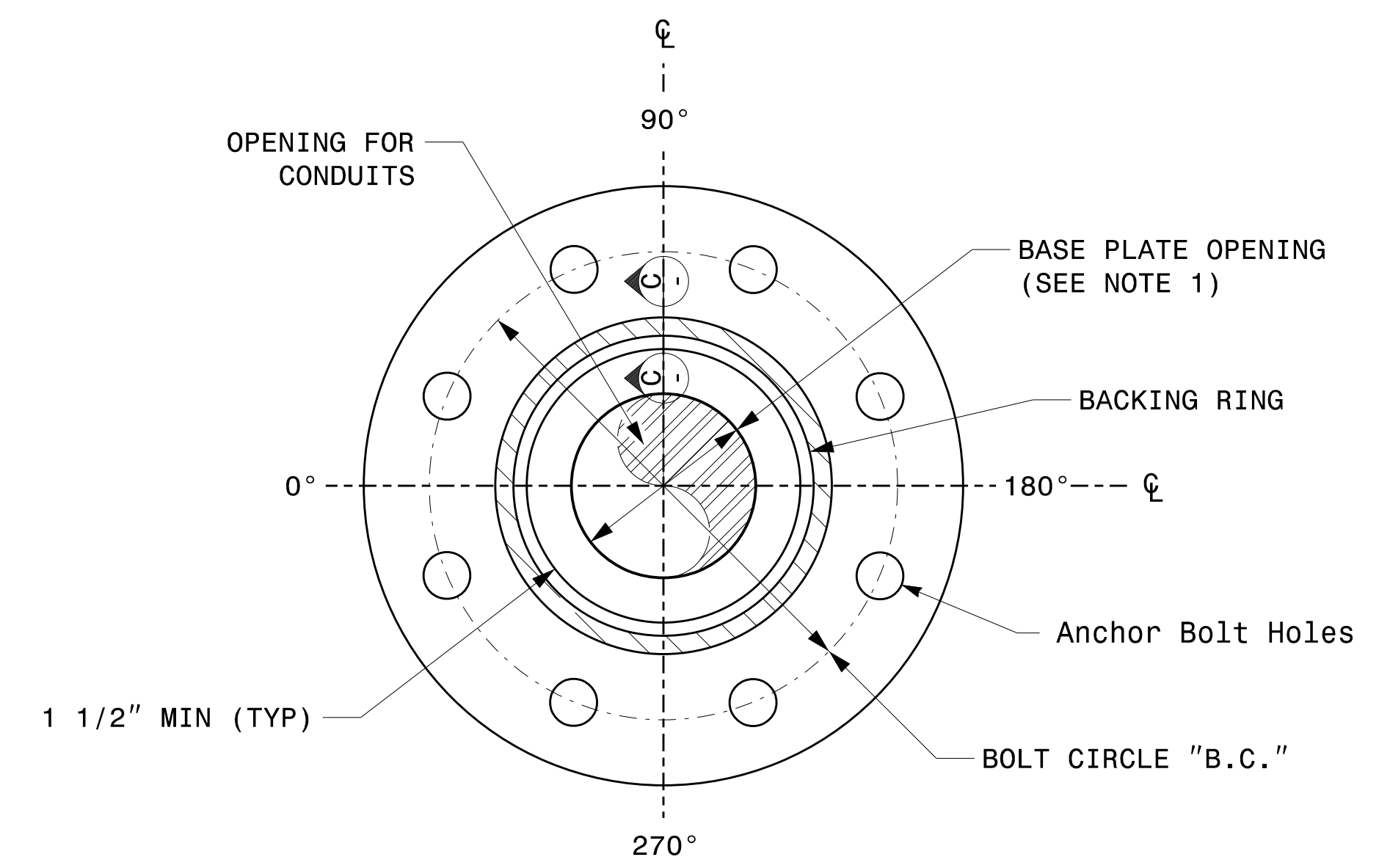


PROJECT I.D. NO.	SHEET NO.
U-5783	Sig.M3

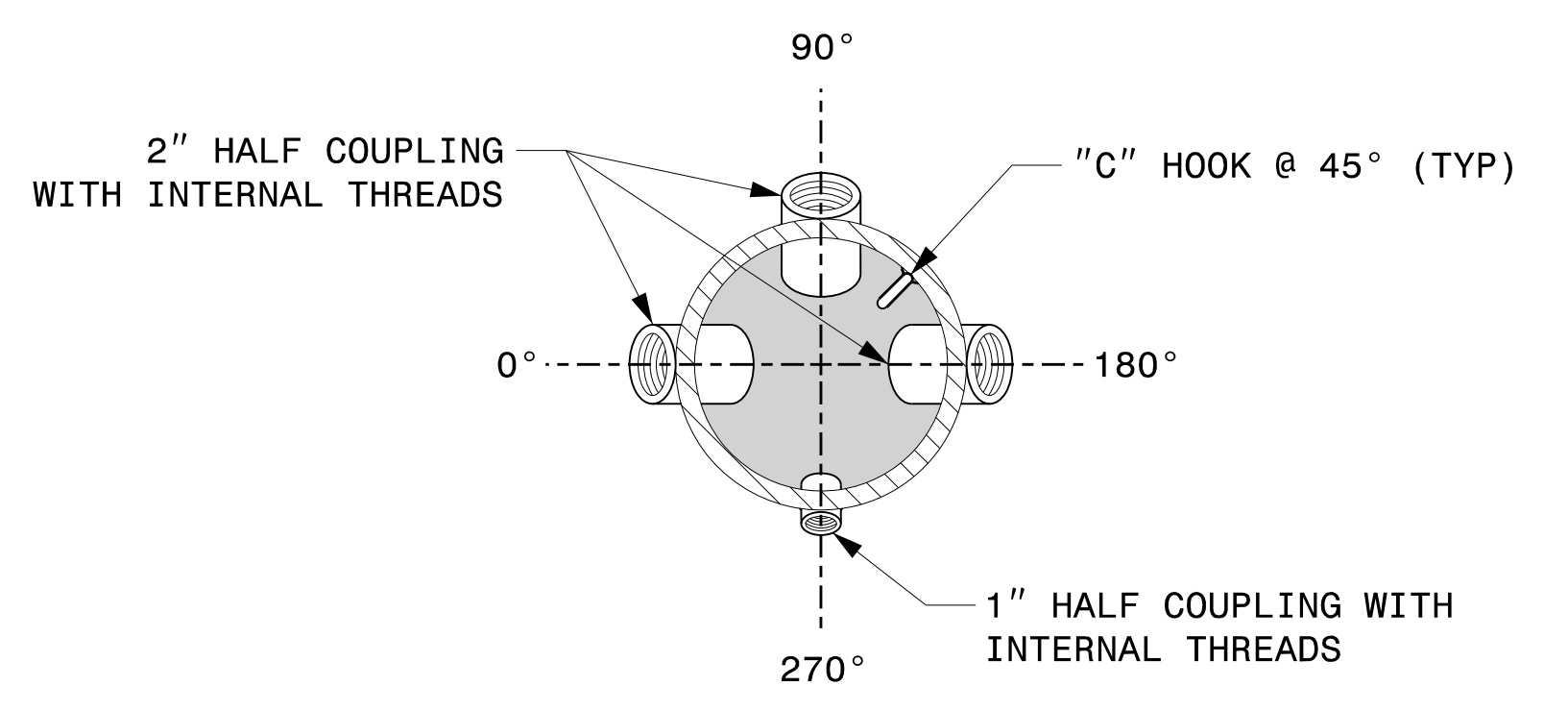
**NOTE:**  
 1. OPENING IN POLE BASE PLATE SHALL BE EQUAL TO POLE BASE INSIDE DIAMETER MINUS 3 1/2" BUT SHALL NOT BE LESS THAN 8 1/2".



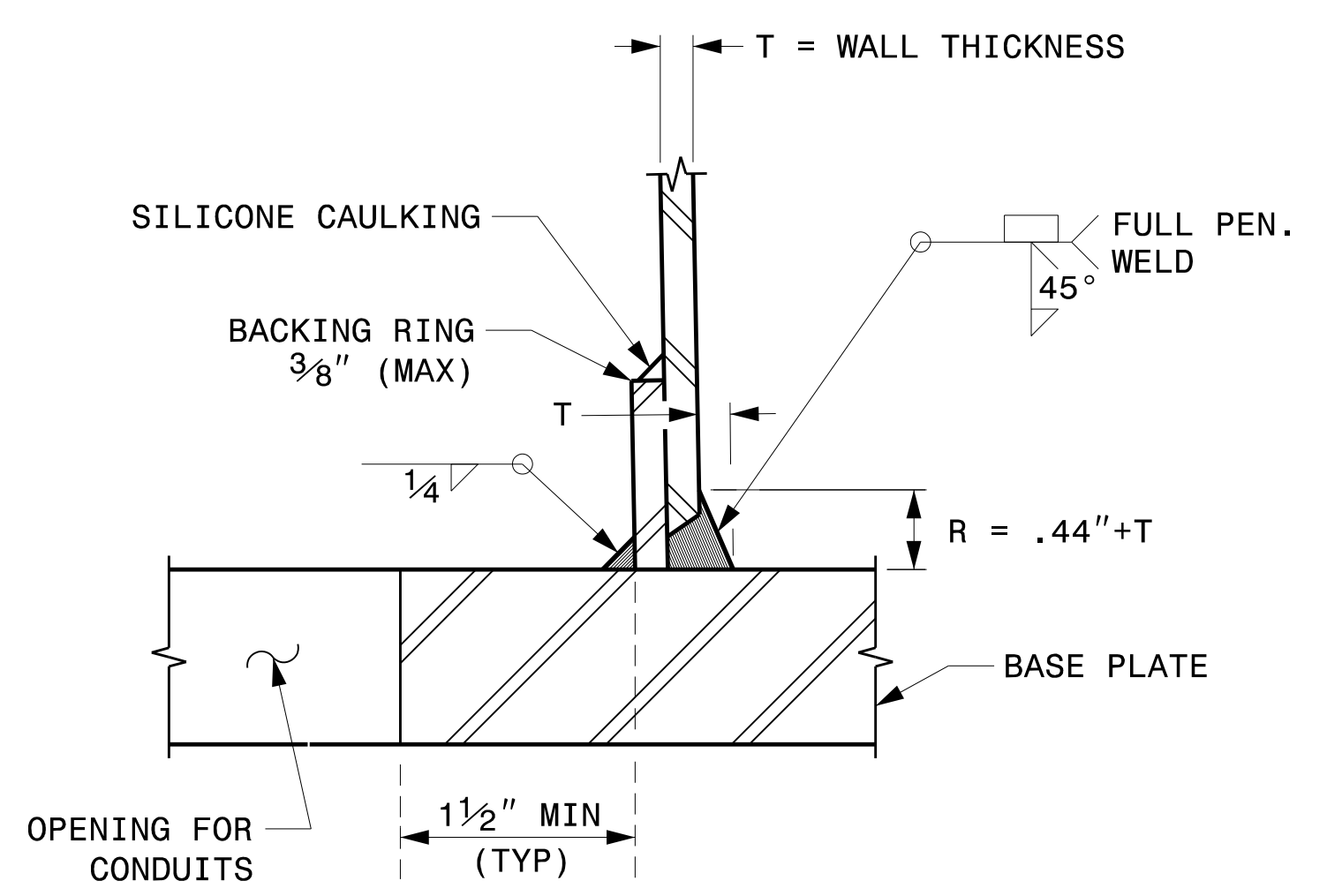
**CABLE ENTRANCES AT TOP OF POLE**



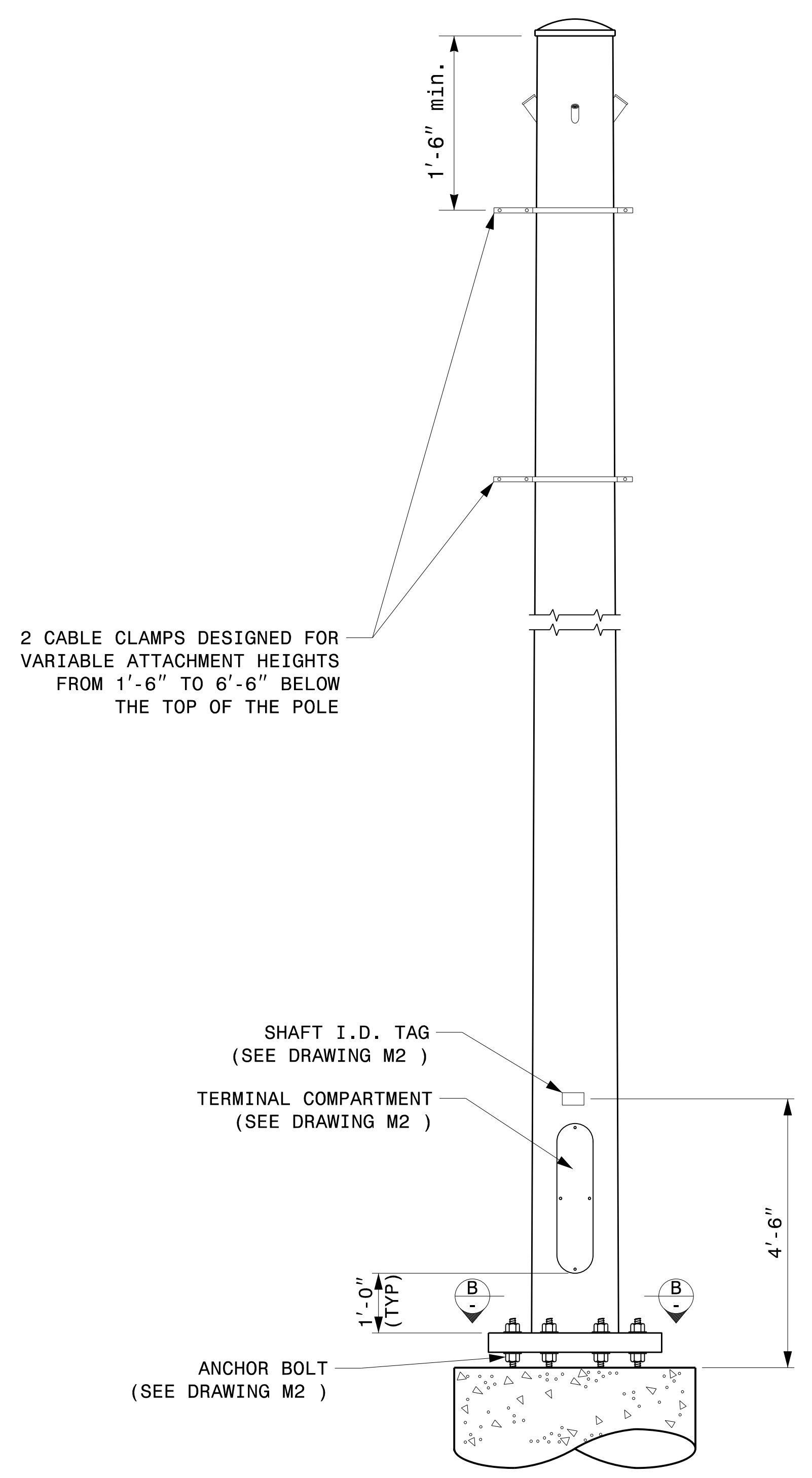
**SECTION B-B**  
 POLE BASE PLATE DETAILS  
 (8 AND 12 BOLT PATTERN)



**SECTION A-A**  
 RADIAL ORIENTATION OF FACTORY INSTALLED  
 ACCESSORIES AT TOP OF POLE



**SECTION C-C**  
 (POLE ATTACHMENT TO BASE PLATE)  
 FULL-PENETRATION  
 GROOVE WELD DETAIL



2 CABLE CLAMPS DESIGNED FOR  
 VARIABLE ATTACHMENT HEIGHTS  
 FROM 1'-6" TO 6'-6" BELOW  
 THE TOP OF THE POLE

**MONOTUBE STRAIN POLE**

**Fabrication Details – Strain Poles**

09-OCT-2023 12:31 S:\TSS\11\115\Sig.M3\115\Sig.M3.dgn Design Section\Structures\Drawings\2024\_Metal\_Pole\_Std\_Drawings\_for\_LRFD\2024\_Sig.M3\_Std\_Fabrication\_Details\Strain\_Poles.dgn Kcdur100n

	Typical Fabrication Details For Strain Poles		SEAL 
	PLAN DATE: SEPTEMBER 2023 PREPARED BY: K.C. DURIGON	DESIGNED BY: K.C. DURIGON REVIEWED BY: D.C. SARKAR	