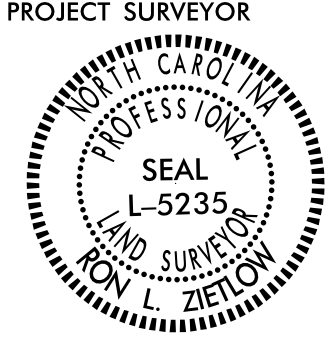


PROJECT REFERENCE NO.	SHEET NO.
U-5783	RW07
Location and Surveys	
MATTERN AND CRAIG ENGINEERS & SURVEYORS 12 BROAD STREET ASHEVILLE NORTH CAROLINA 28801 (828) 254-2201 FAX (828) 254-4562 NC LIC. NO. C-1154	
PROJECT SURVEYOR	
	
DOCUMENT NOT CONSIDERED FINAL UNLESS ALL SIGNATURES COMPLETED	

NOTES:

1. IF FURTHER INFORMATION REGARDING PROJECT CONTROL IS NEEDED PLEASE CONTACT THE LOCATION AND SURVEYS UNIT.
2. PROJECT CONTROL WAS ESTABLISHED USING GNSS, THE GLOBAL NAVIGATION SATELLITE SYSTEM.
3. RIGHT OF WAY MONUMENTATION ESTABLISHED 7/01/19 TO 3/29/24 .

I, R.L. Zietlow, certify that the right of way and permanent easement monumentation for this project shown herein was completed under my direct and responsible charge from an actual survey made under my supervision; that all horizontal closures had a minimum ratio of precision of 1:10,000 (Class A). Field work was performed from 7/01/19 to 3/29/24, and all coordinates are based on NAD83/2011; That this survey was performed to meet the requirements of 21NCAC 56.1600 as applicable.

This 29th day of March, 2024.

DocuSigned by:

 R.L. Zietlow
 Professional Land Surveyor L-5235

-DR8- CURVE DATA		-DR9- CURVE DATA	
PI Sta 10+39.62	PI Sta 10+86.64	PI Sta 11+0.69	
$\Delta = 14^{\circ} 07' 00.0''$ (LT)	$\Delta = 22^{\circ} 04' 11.6''$ (LT)	$\Delta = 55^{\circ} 05' 51.8''$ (RT)	
D = 17' 54' 17.8"	D = 143' 14' 22.0"	D = 190' 59' 09.4"	
L = 78.84'	L = 15.4'	L = 28.85'	
T = 39.62'	T = 7.80'	T = 15.65'	
R = 320.00'	R = 40.00'	R = 30.00'	



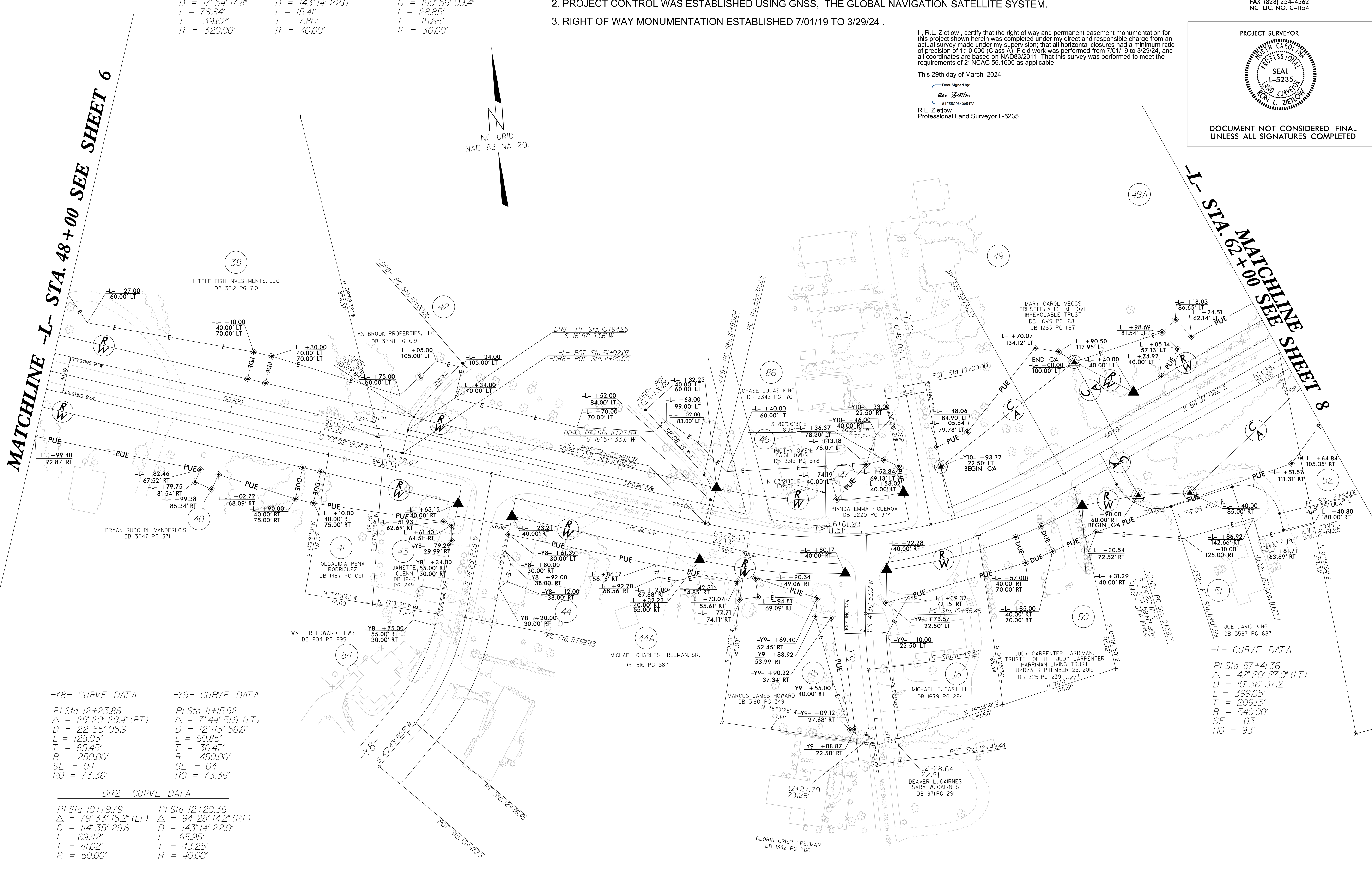
MATCHLINE -L- STA. 48+00 SEE SHEET 6

-L- STA. 62+00 MATCHLINE SHEET 8

-Y8- CURVE DATA		-Y9- CURVE DATA	
PI Sta 12+23.88	PI Sta 11+5.92		
$\Delta = 29^{\circ} 20' 29.4''$ (RT)	$\Delta = 7^{\circ} 44' 51.9''$ (LT)		
D = 22' 55' 05.9"	D = 12' 43' 56.6"		
L = 128.03'	L = 60.85'		
T = 65.45'	T = 30.47'		
R = 250.00'	R = 450.00'		
SE = 04	SE = 04		
RO = 73.36'	RO = 73.36'		

-DR2- CURVE DATA	
PI Sta 10+79.79	PI Sta 12+20.36
$\Delta = 79^{\circ} 33' 15.2''$ (LT)	$\Delta = 94^{\circ} 28' 14.2''$ (RT)
D = 114' 35' 29.6"	D = 143' 14' 22.0"
L = 69.42'	L = 65.95'
T = 41.62'	T = 43.25'
R = 50.00'	R = 40.00'

REVISIONS
 6/2/19
 L:\MAR_2024\1203\Additional Services Survey\03-Design\03-Survey\05-CAD\U5783-1.s.r.w-07.dgn
 R. Zietlow
 AT: MC-RSH-WKS-1524



-L- CURVE DATA	
PI Sta 57+41.36	
$\Delta = 42^{\circ} 20' 27.0''$ (LT)	
D = 10' 36' 37.2"	
L = 399.05'	
T = 209.13'	
R = 540.00'	
SE = 03	
RO = 93'	