


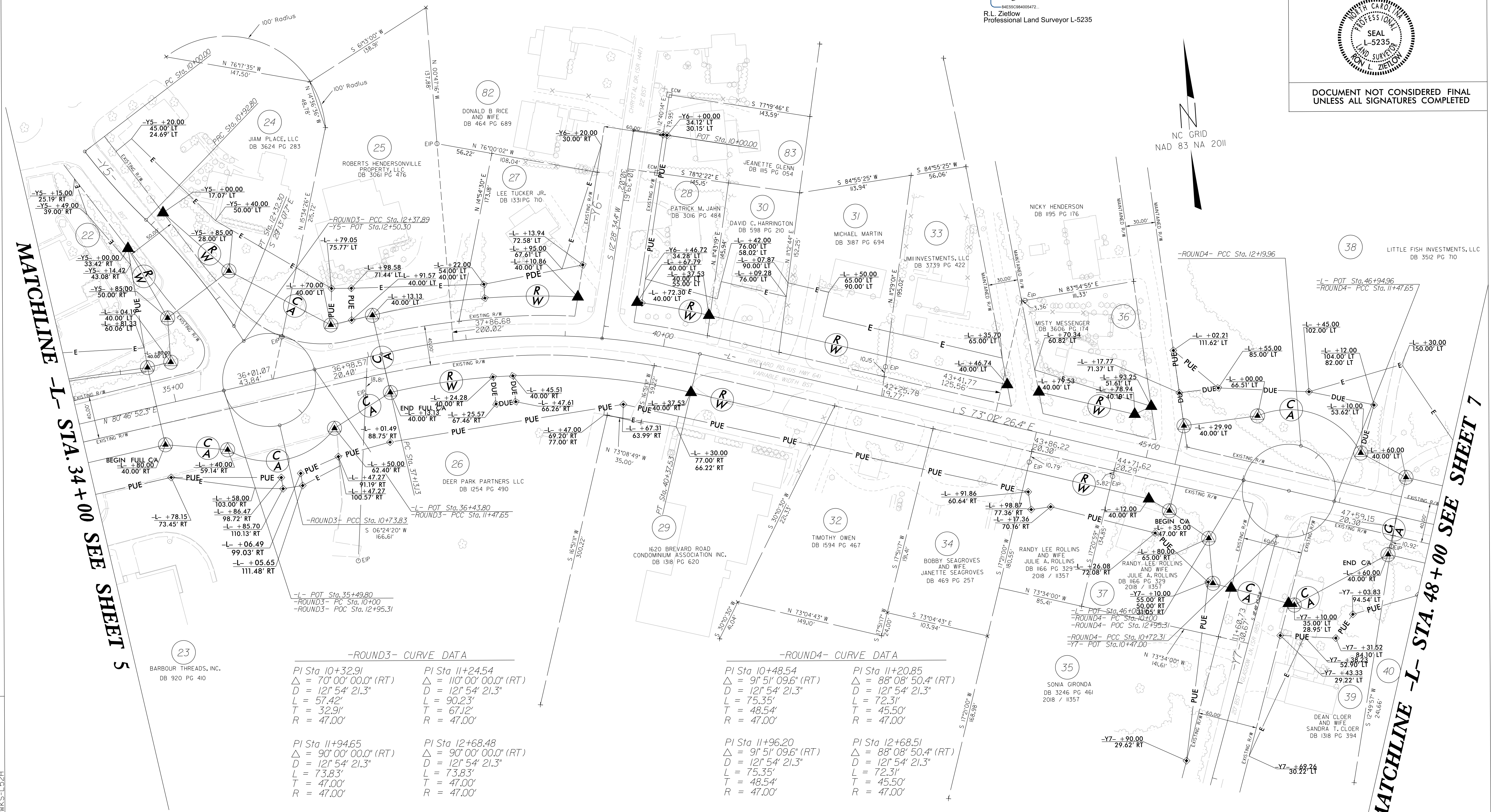
PROJECT REFERENCE NO.	SHEET NO.
U-5783	RW06
<b>Location and Surveys</b>	
MATTERN AND CRAIG ENGINEERS & SURVEYORS 12 BROAD STREET ASHEVILLE NORTH CAROLINA 28801 (828) 254-2201 FAX (828) 254-4562 NC LIC. NO. C-1154	
PROJECT SURVEYOR	
	
DOCUMENT NOT CONSIDERED FINAL UNLESS ALL SIGNATURES COMPLETED	

**NOTES:**

1. IF FURTHER INFORMATION REGARDING PROJECT CONTROL IS NEEDED PLEASE CONTACT THE LOCATION AND SURVEYS UNIT.
2. PROJECT CONTROL WAS ESTABLISHED USING GNSS, THE GLOBAL NAVIGATION SATELLITE SYSTEM.
3. RIGHT OF WAY MONUMENTATION ESTABLISHED 7/01/19 TO 3/29/24 .

I, R.L. Zietlow, certify that the right of way and permanent easement monumentation for this project shown herein was completed under my direct and responsible charge from an actual survey made under my supervision; that all horizontal closures had a minimum ratio of precision of 1:10,000 (Class A). Field work was performed from 7/01/19 to 3/29/24, and all coordinates are based on NAD83/2011; That this survey was performed to meet the requirements of 21NCAC 56.1600 as applicable.

This 29th day of April, 2024.  
 Documented by:  
  
 R.L. Zietlow  
 Professional Land Surveyor L-5235



MATCHLINE -L- STA. 34+00 SEE SHEET 5

MATCHLINE -L- STA. 48+00 SEE SHEET 7

**-ROUND3- CURVE DATA**

PI Sta 10+32.91 Δ = 70° 00' 00.0" (RT) D = 121' 54" 21.3" L = 57.42' T = 32.91' R = 47.00'	PI Sta 11+24.54 Δ = 110° 00' 00.0" (RT) D = 121' 54" 21.3" L = 90.23' T = 67.12' R = 47.00'
PI Sta 11+94.65 Δ = 90° 00' 00.0" (RT) D = 121' 54" 21.3" L = 73.83' T = 47.00' R = 47.00'	PI Sta 12+68.48 Δ = 90° 00' 00.0" (RT) D = 121' 54" 21.3" L = 73.83' T = 47.00' R = 47.00'

**-ROUND4- CURVE DATA**

PI Sta 10+48.54 Δ = 91° 51' 09.6" (RT) D = 121' 54" 21.3" L = 75.35' T = 48.54' R = 47.00'	PI Sta 11+20.85 Δ = 88° 08' 50.4" (RT) D = 121' 54" 21.3" L = 72.31' T = 45.50' R = 47.00'
PI Sta 11+96.20 Δ = 91° 51' 09.6" (RT) D = 121' 54" 21.3" L = 75.35' T = 48.54' R = 47.00'	PI Sta 12+68.51 Δ = 88° 08' 50.4" (RT) D = 121' 54" 21.3" L = 72.31' T = 45.50' R = 47.00'

**-Y5- CURVE DATA**

PI Sta 10+46.49 Δ = 8° 42' 58.8" (LT) D = 9° 23' 33.9" L = 92.80' T = 46.49' R = 610.00' SE = 03 RO = 30'	PI Sta 11+62.85 Δ = 13° 06' 10.8" (RT) D = 9° 23' 33.9" L = 139.50' T = 70.06' R = 610.00' SE = 036 RO = 62.1'
--	---

**-L- CURVE DATA**

PI Sta 38+78.21 Δ = 26° 10' 41.3" (RT) D = 8° 04' 11.4" L = 324.40' T = 165.08' R = 710.00' SE = 04 RO = 124'
--

REVISIONS

C:\Users\rlzietlow\OneDrive\Work\Projects\U-5783-24\Drawings\03-Design\03-Survey\05-CAD\U5783-1s\_r-w-06.dgn  
 05 JUN 2024 14:01  
 R.L. Zietlow  
 Professional Land Surveyor L-5235