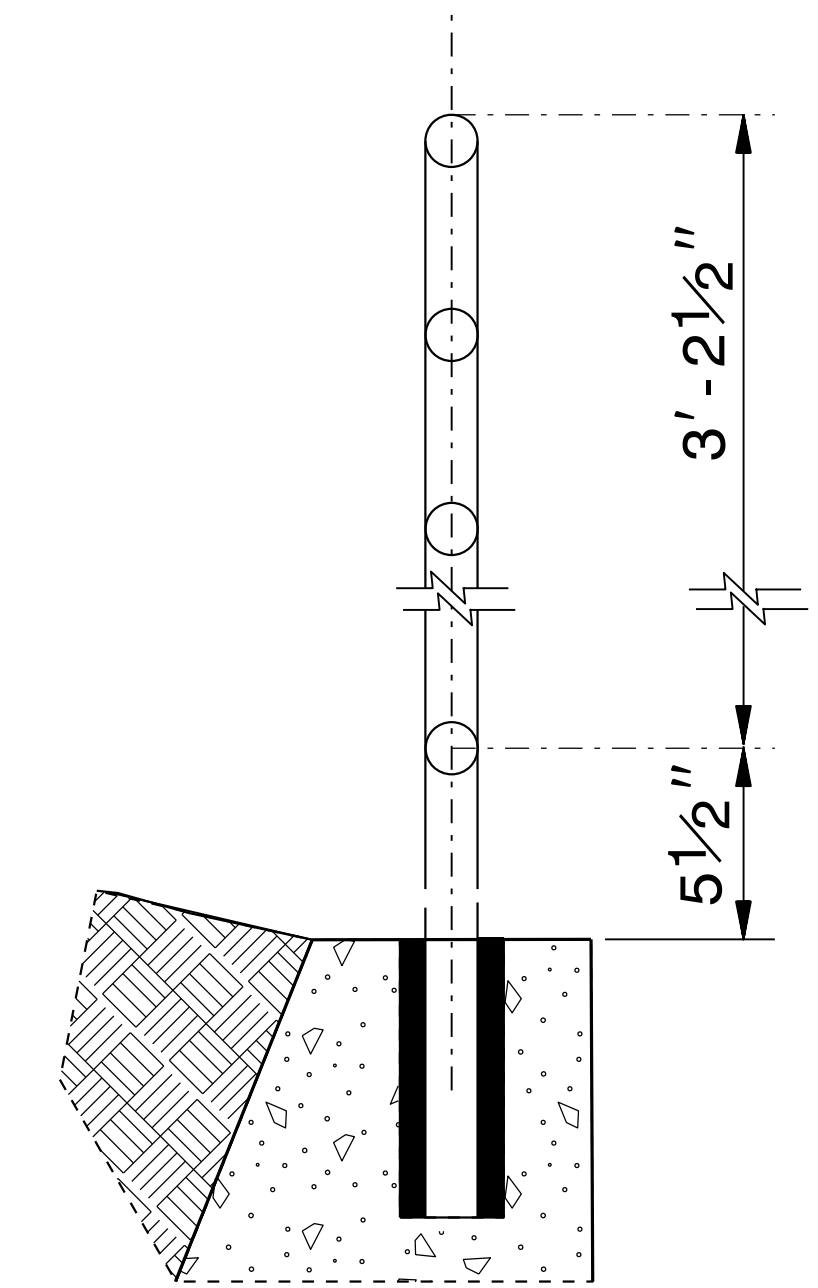
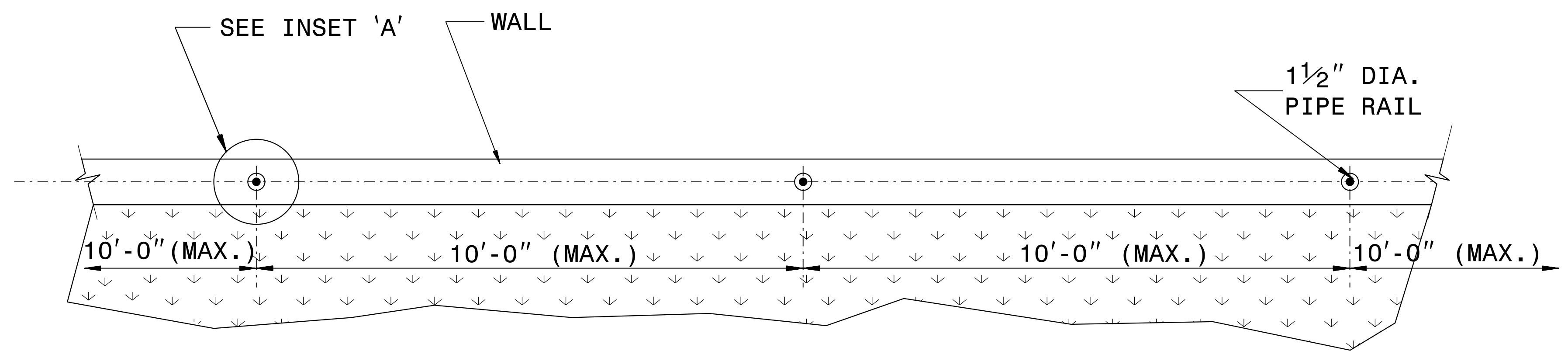


**ELEVATION OF HANDRAIL**



**INSET 'A'**



**PLAN VIEW**

**NOTES:**

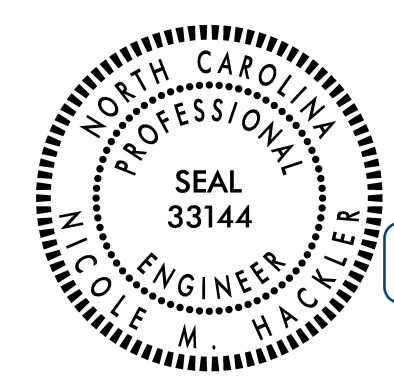
CONSTRUCT PROPOSED STEEL PIPE RAIL 1 1/2" DIAMETER SCHEDULE 40 PLAIN END GALVANIZED STEEL PIPE MEETING THE REQUIREMENTS OF ASTM A53.

PAINT, IF REQUIRED BY THE ENGINEER, IN ACCORDANCE WITH SECTION 1080 OF THE STANDARD SPECIFICATIONS.

WELD IN ACCORDANCE WITH ARTICLE 1072-18 OF THE STANDARD SPECIFICATIONS.

SUBMIT THE ATTACHMENT OF THE HANDRAIL TO THE RETAINING WALL TO THE CONTRACTS AND STANDARDS OFFICE FOR APPROVAL.

I4-MAR-2019 10:43 S:\Contracts\Special Details\Howerton\Handrail on Retaining Wall.dgn Jhowerton AT USD-292595



DocuSigned by: Nicole M. Hickler 588432034164CS

5/30/2024

DOCUMENT NOT CONSIDERED FINAL UNLESS ALL SIGNATURES COMPLETED

**CONTRACT STANDARDS AND DEVELOPMENT UNIT**  
Office 919-707-6950 FAX 919-250-4119

**DETAIL OF PIPE HANDRAIL MOUNTED ON A WALL**

ORIGINAL BY: E.E. WARD	DATE: 12-99
MODIFIED BY:	DATE:
CHECKED BY:	DATE:
FILE SPEC.: jhowerton/handrail_on_retaining_wall.dgn	