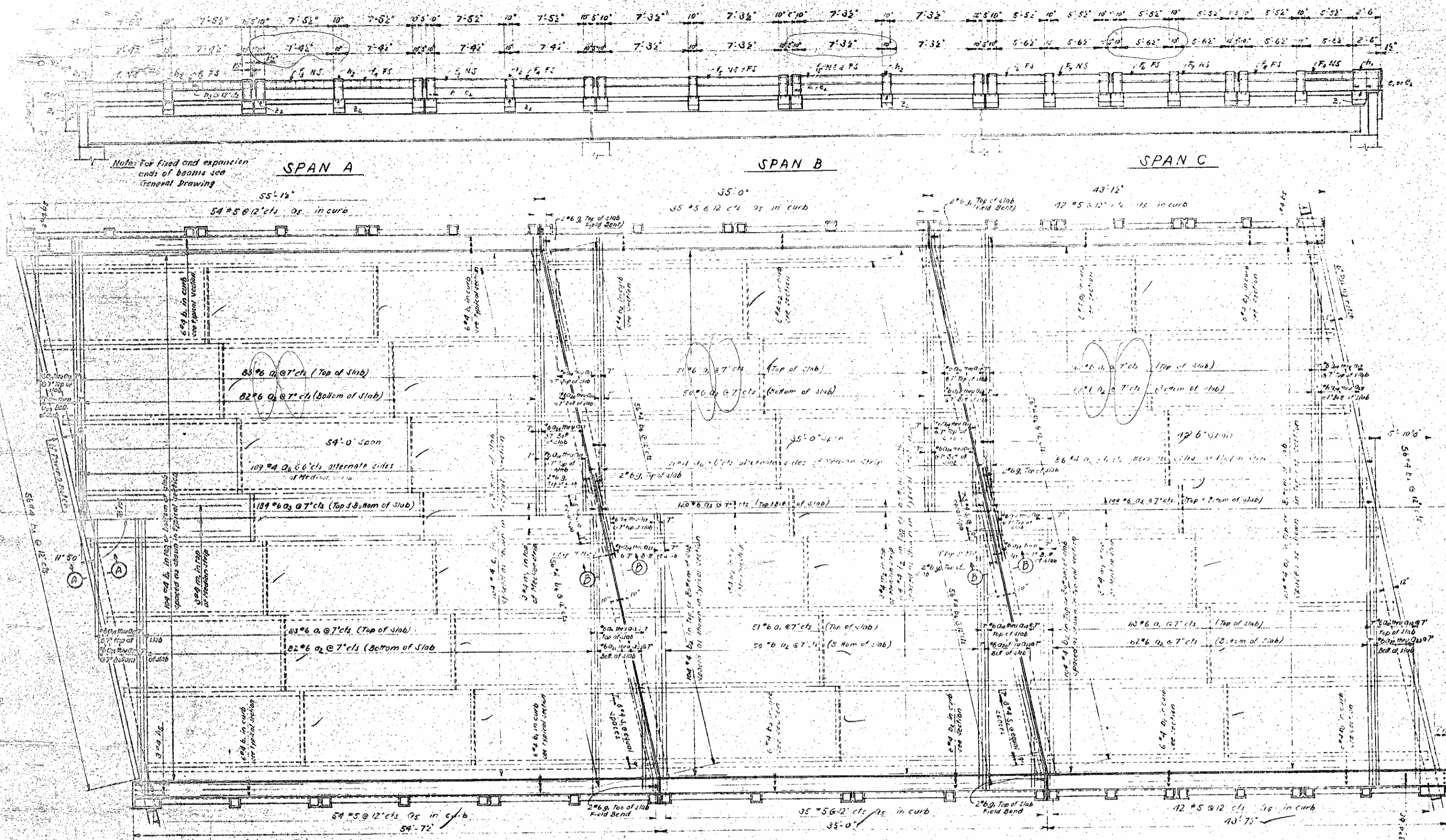




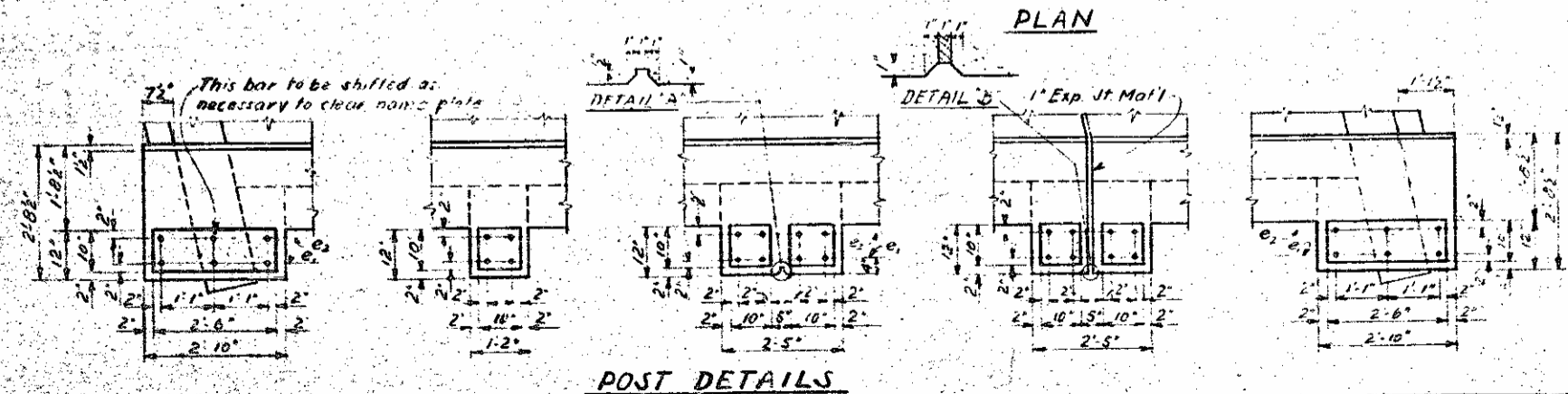
Note: For fixed and expansion ends of beams see General Drawing



PROJECT NO. 8-19-53  
 HAYWOOD COUNTY  
 STATION: 49+72.83-2  
 SHEET NO. 1 OF 2

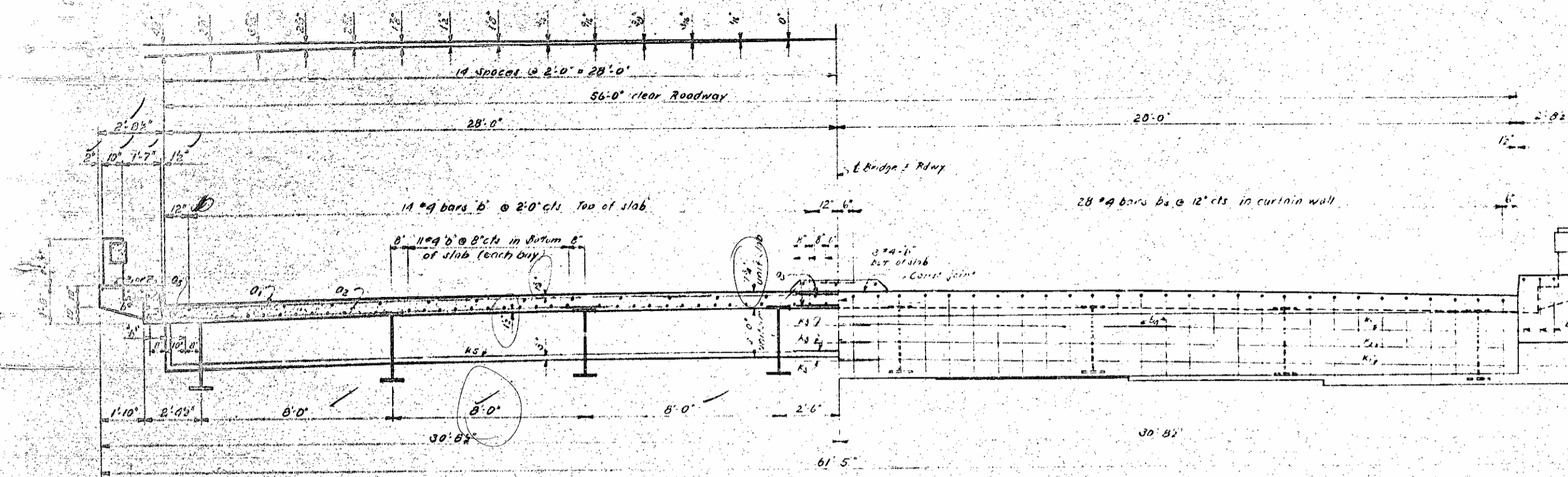
STATE OF NORTH CAROLINA  
 STATE HIGHWAY COMMISSION  
 SUPERSTRUCTURE  
 SPANS A, B & C  
 MAY 1953

DATE	BY	REVISION



DESIGNED BY: [Name]  
 DRAWN BY: [Name]  
 CHECKED BY: [Name]  
 DATE: May 1953



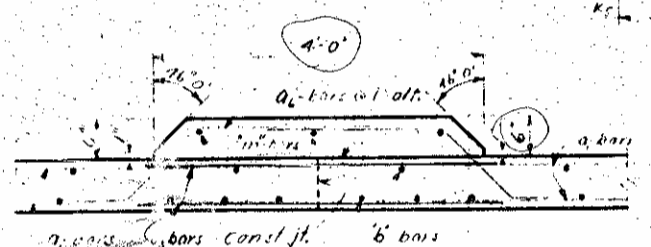


HALF INTERIOR SECTION  
(Showing diaphragm over Int. Bent)

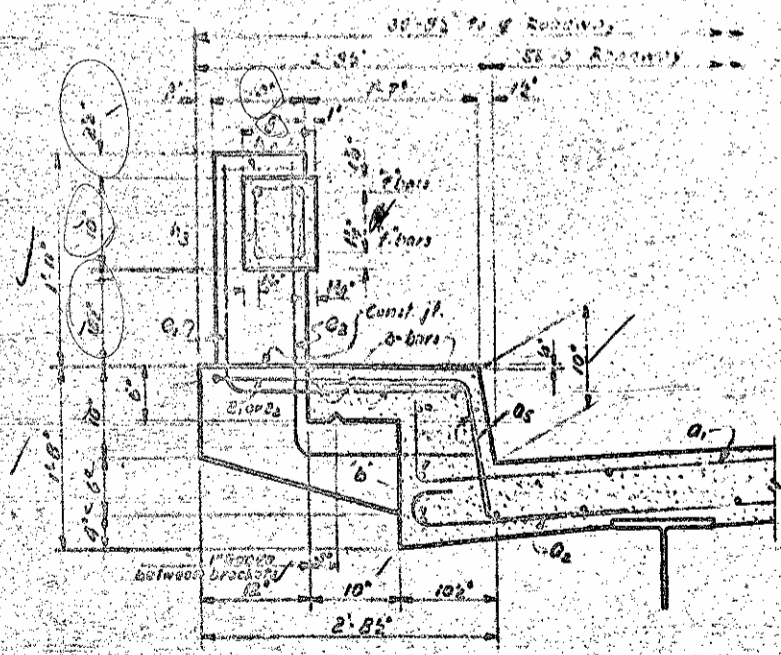
HALF END VIEW

**BEAM DEFLECTIONS**

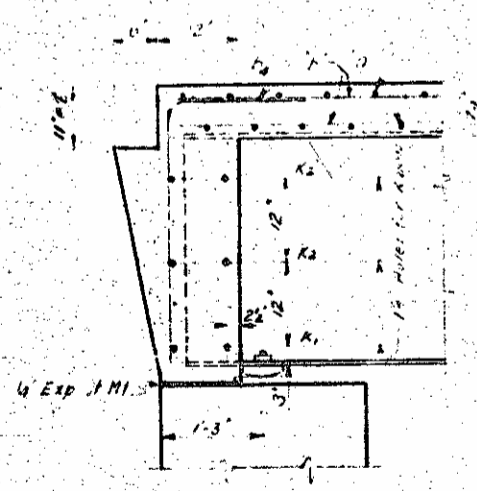
	SPAN A		SPAN B		SPAN C	
	Int	Ext	Int	Ext	Int	Ext
Deflection due to weight of Beam	0"	0"	0"	0"	0"	0"
Deflection due to superimposed Dead Load	5/8"	5/8"	5/8"	5/8"	5/8"	5/8"
Total Dead Load Deflection	4"	3 1/2"	4"	3 1/2"	4"	3 1/2"
Required Beam Camber	4"	3 1/2"	0"	0"	0"	0"



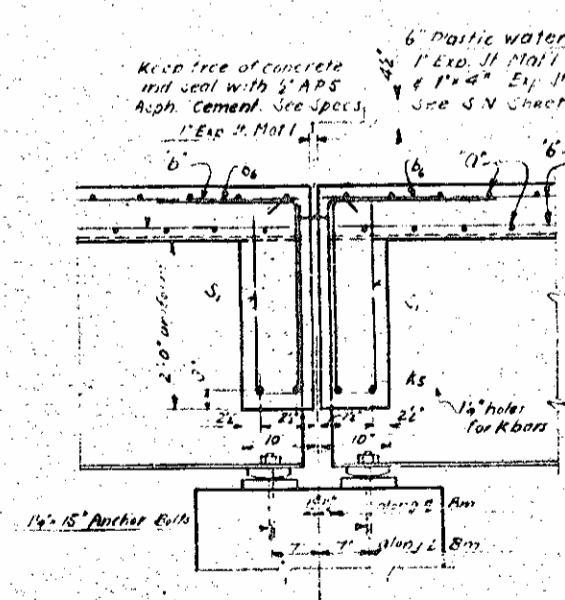
MEDIAN DETAIL



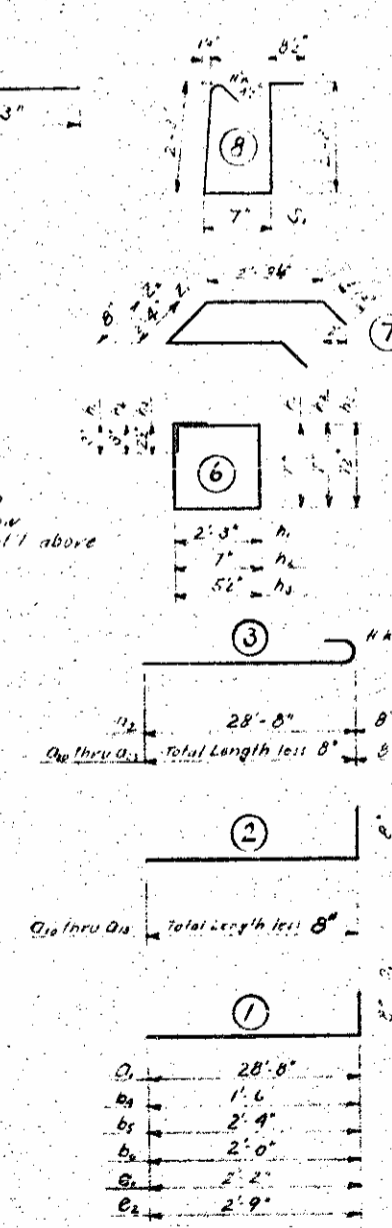
RAIL AND CURB SECTION



SECTION A-A



SECTION B-B



BAR TYPES  
(Dimensions are out to out)

**BILL OF MATERIAL FOR SPAN**

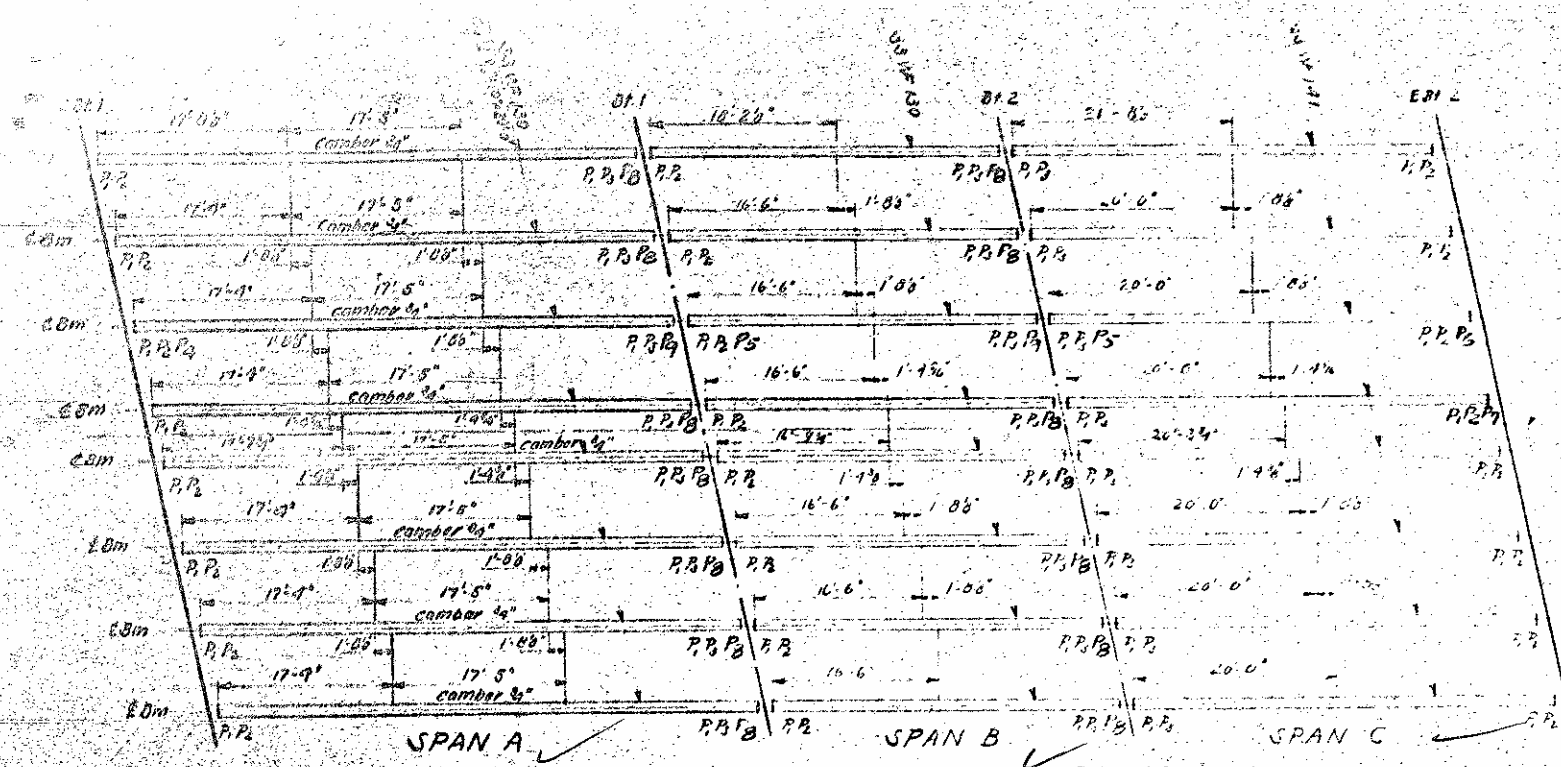
BAR	NO	SIZE	TYPE	LENGTH	WEIGHT	BAR	NO	SIZE	TYPE	LENGTH	WEIGHT
01	14	#6	1	27'-4"	17,359	01	202	#5	4	3'-9"	1,025
02	338	#6	3	27'-4"	17,095	02	202	#4	5	1'-0"	711
03	448	#6	str	7'-6"	3,028	03	112	#6	2	23'-8"	127
						04	12	#6	2	18'-2"	327
						05	12	#6	2	12'-8"	228
						06	100	#4	1	6'-0"	320
						07	100	#4	1	6'-0"	320
						08	100	#4	1	6'-0"	320
						09	100	#4	1	6'-0"	320
						10	100	#4	1	6'-0"	320
						11	100	#4	1	6'-0"	320
						12	100	#4	1	6'-0"	320
						13	100	#4	1	6'-0"	320
						14	100	#4	1	6'-0"	320
						15	100	#4	1	6'-0"	320
						16	100	#4	1	6'-0"	320
						17	100	#4	1	6'-0"	320
						18	100	#4	1	6'-0"	320
						19	100	#4	1	6'-0"	320
						20	100	#4	1	6'-0"	320
						21	100	#4	1	6'-0"	320
						22	100	#4	1	6'-0"	320
						23	100	#4	1	6'-0"	320
						24	100	#4	1	6'-0"	320
						25	100	#4	1	6'-0"	320
						26	100	#4	1	6'-0"	320
						27	100	#4	1	6'-0"	320
						28	100	#4	1	6'-0"	320
						29	100	#4	1	6'-0"	320
						30	100	#4	1	6'-0"	320
						31	100	#4	1	6'-0"	320
						32	100	#4	1	6'-0"	320
						33	100	#4	1	6'-0"	320
						34	100	#4	1	6'-0"	320
						35	100	#4	1	6'-0"	320
						36	100	#4	1	6'-0"	320
						37	100	#4	1	6'-0"	320
						38	100	#4	1	6'-0"	320
						39	100	#4	1	6'-0"	320
						40	100	#4	1	6'-0"	320
						41	100	#4	1	6'-0"	320
						42	100	#4	1	6'-0"	320
						43	100	#4	1	6'-0"	320
						44	100	#4	1	6'-0"	320
						45	100	#4	1	6'-0"	320
						46	100	#4	1	6'-0"	320
						47	100	#4	1	6'-0"	320
						48	100	#4	1	6'-0"	320
						49	100	#4	1	6'-0"	320
						50	100	#4	1	6'-0"	320
						51	100	#4	1	6'-0"	320
						52	100	#4	1	6'-0"	320
						53	100	#4	1	6'-0"	320
						54	100	#4	1	6'-0"	320
						55	100	#4	1	6'-0"	320
						56	100	#4	1	6'-0"	320
						57	100	#4	1	6'-0"	320
						58	100	#4	1	6'-0"	320
						59	100	#4	1	6'-0"	320
						60	100	#4	1	6'-0"	320
						61	100	#4	1	6'-0"	320
						62	100	#4	1	6'-0"	320
						63	100	#4	1	6'-0"	320
						64	100	#4	1	6'-0"	320
						65	100	#4	1	6'-0"	320
						66	100	#4	1	6'-0"	320
						67	100	#4	1	6'-0"	320
						68	100	#4	1	6'-0"	320
						69	100	#4	1	6'-0"	320
						70	100	#4	1	6'-0"	320
						71	100	#4	1	6'-0"	320
						72	100	#4	1	6'-0"	320
						73	100	#4	1	6'-0"	320
						74	100	#4	1	6'-0"	320
						75	100	#4	1	6'-0"	320
						76	100	#4	1	6'-0"	320
						77	100	#4	1	6'-0"	320
						78	100	#4	1	6'-0"	320
						79	100	#4	1	6'-0"	320
						80	100	#4	1	6'-0"	320
						81	100	#4	1	6'-0"	320
						82	100	#4	1	6'-0"	320
						83	100	#4	1	6'-0"	320
						84	100	#4	1	6'-0"	320
						85	100	#4	1	6'-0"	320
						86	100	#4	1	6'-0"	320
						87	100	#4	1	6'-0"	320
						88	100	#4	1	6'-0"	320
						89	100	#4	1	6'-0"	320
						90	100	#4	1	6'-0"	320
						91	100	#4	1	6'-0"	320
						92	100	#4	1	6'-0"	320
						93	100	#4	1	6'-0"	320
						94	100	#4	1	6'-0"	320
						95	100	#4	1	6'-0"	320
						96	100	#4	1	6'-0"	320
						97	100	#4	1	6'-0"	320
						98	100	#4	1	6'-0"	320
						99	100	#4	1	6'-0"	320
						100	100	#4	1	6'-0"	320

Reinforcing Steel Lbs. 16,290  
Class 'A' Concrete Cords 855  
Structural Steel Lbs. 12,900

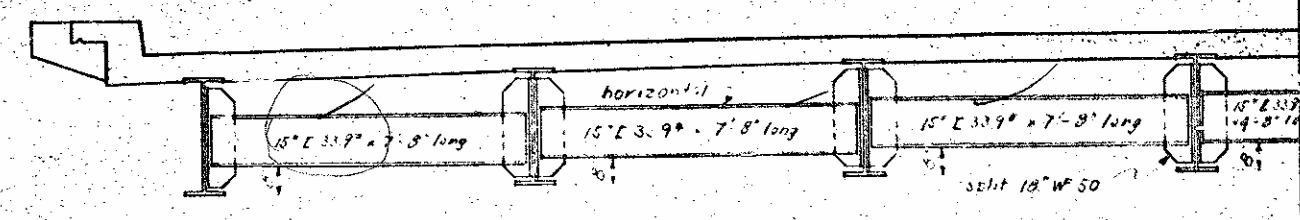
PROJECT NO. 619430  
HAYWOOD COUNTY  
STATION: 49+72.63-0  
SHEET 2 OF 2

STATE OF NORTH CAROLINA  
STATE HIGHWAY COMMISSION  
SUPERSTRUCTURE  
CROSS SECTIONS  
JUNE 1959

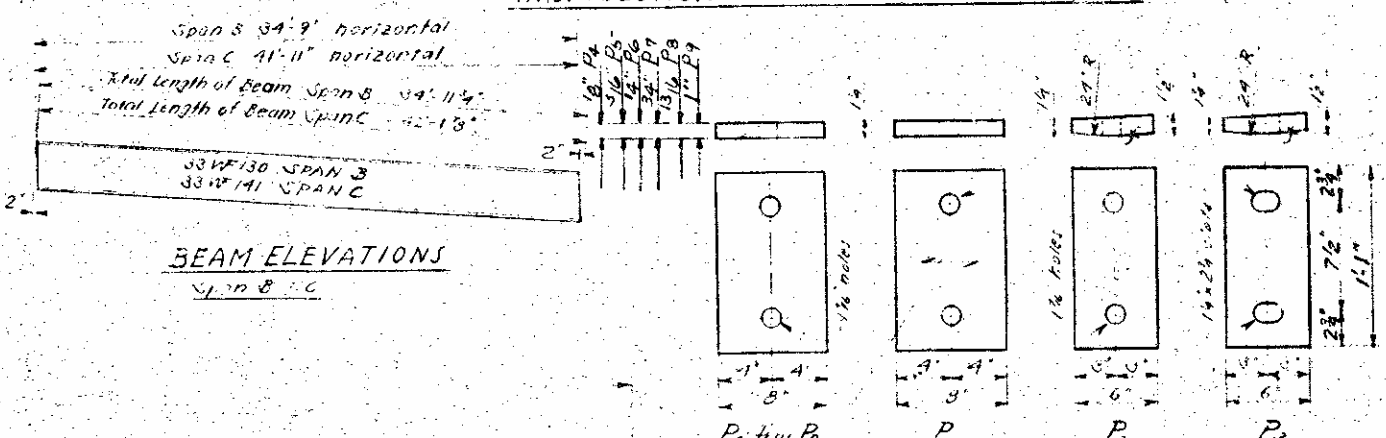
6(22)(1/2) + 9(22) + 6(10)  
360' + 198' + 60' = 618'



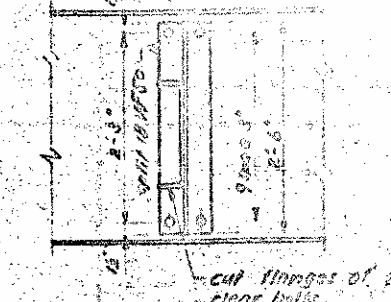
LOCATION OF DIAPHRAGMS, BEARING PLATES AND FILL PLATES



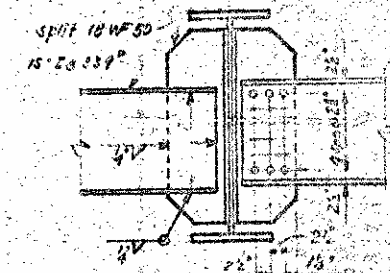
HALF SECTION SHOWING INT DIAPHRAGM



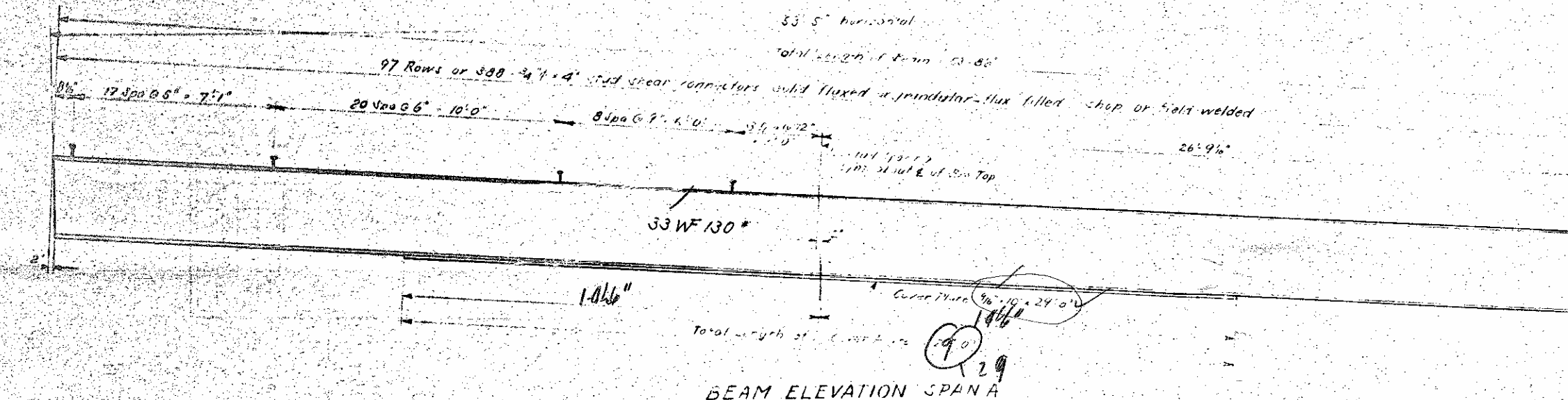
BEAM ELEVATIONS SPAN B & C



Cut flanges of I-beam clear bulbs



INT DIAPHRAGM CONNECTION DETAILS



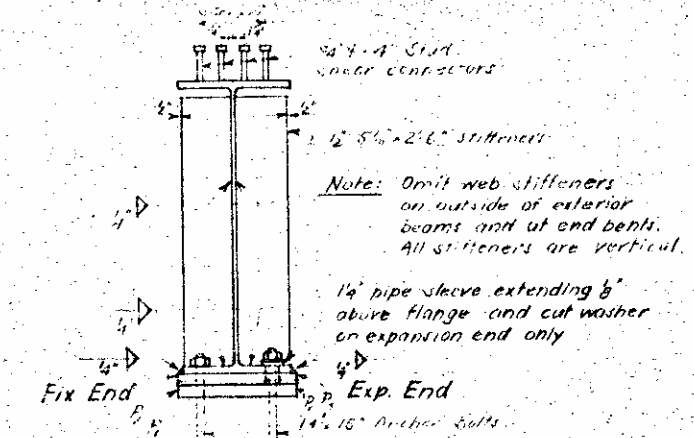
BEAM ELEVATION SPAN A

FILL PLATES

REQU'D:

13 - P1	1 - P2	1 - P7
24 - P2	2 - P5	14 - P8
24 - P3	1 - P6	2 - P9

BEARING PLATE DETAILS

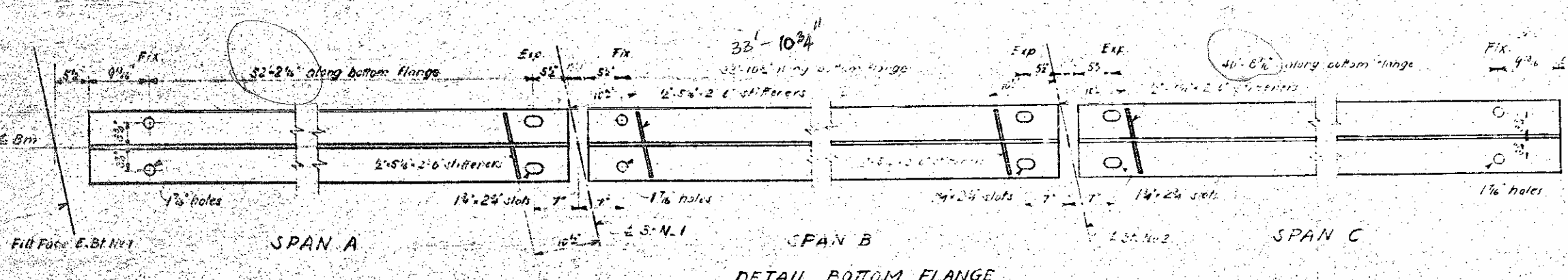


END OF BEAM DETAIL

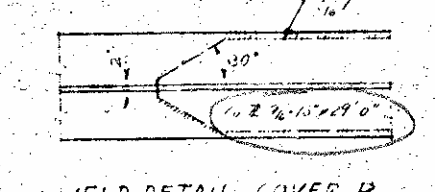
**Notes**

At the Contractor's option shop connections of split 18\"/>

At the Contractor's option shop connections of split 18\"/>



DETAIL BOTTOM FLANGE



WELD DETAIL COVER PL

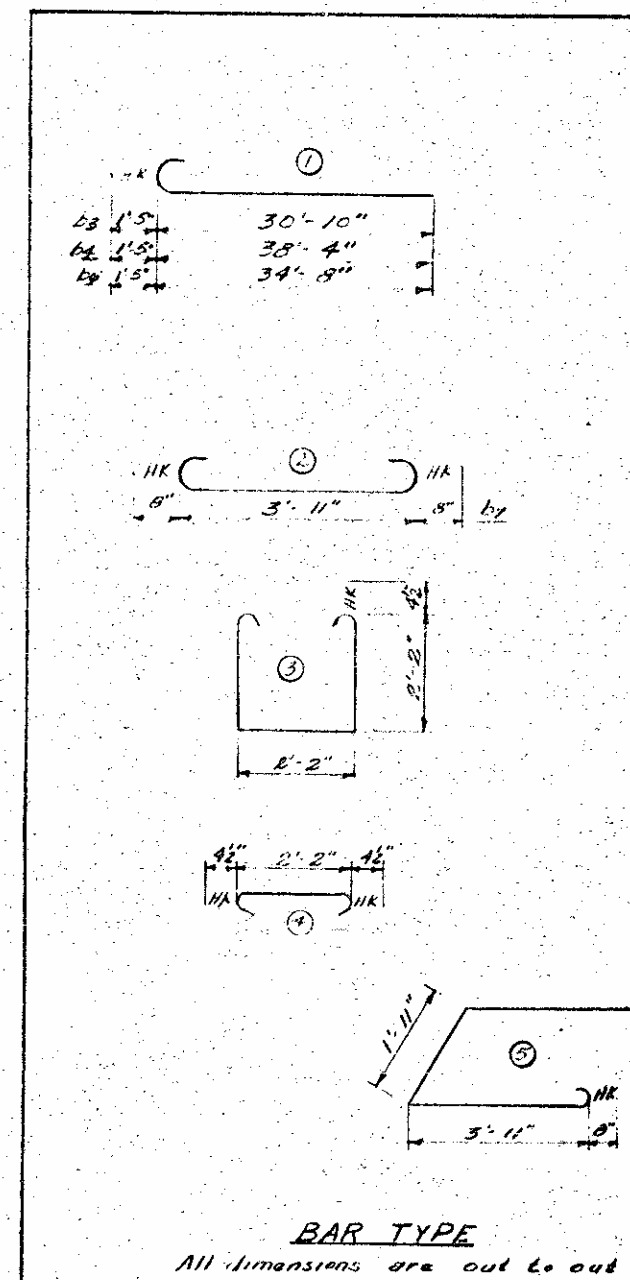
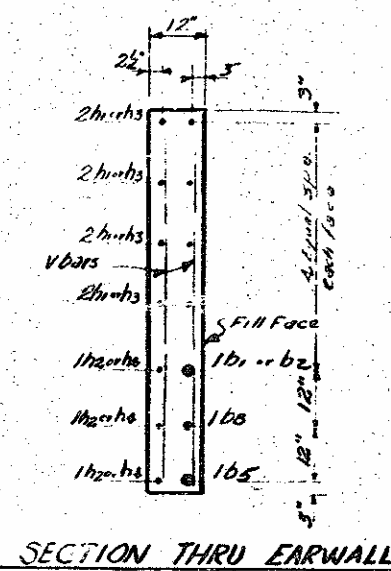
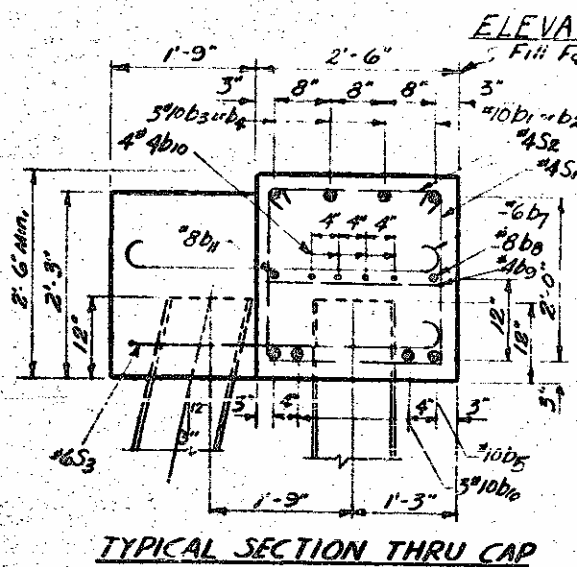
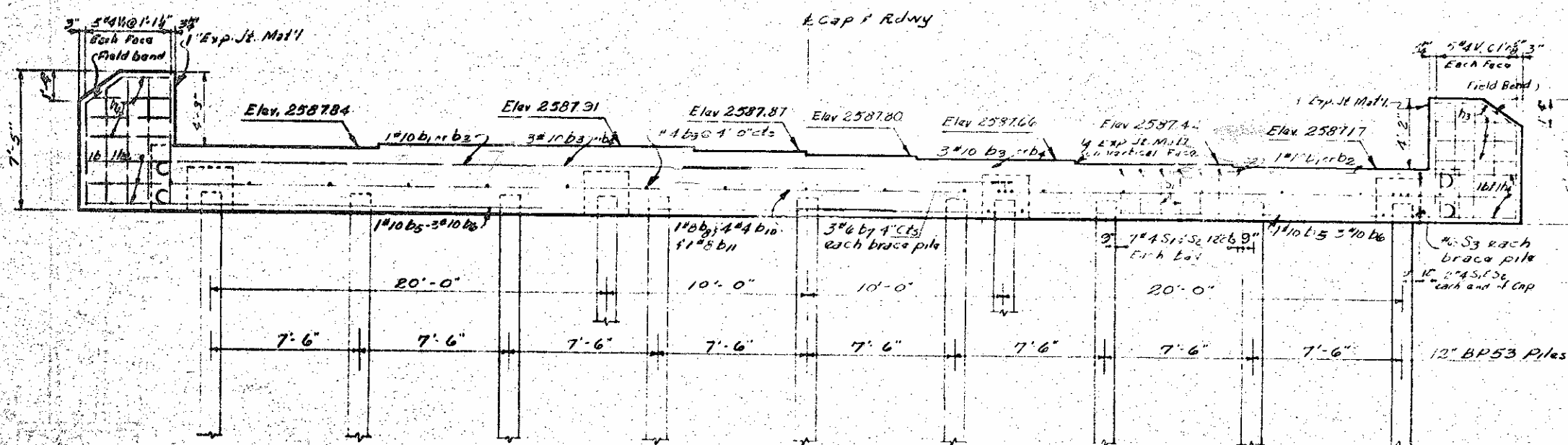
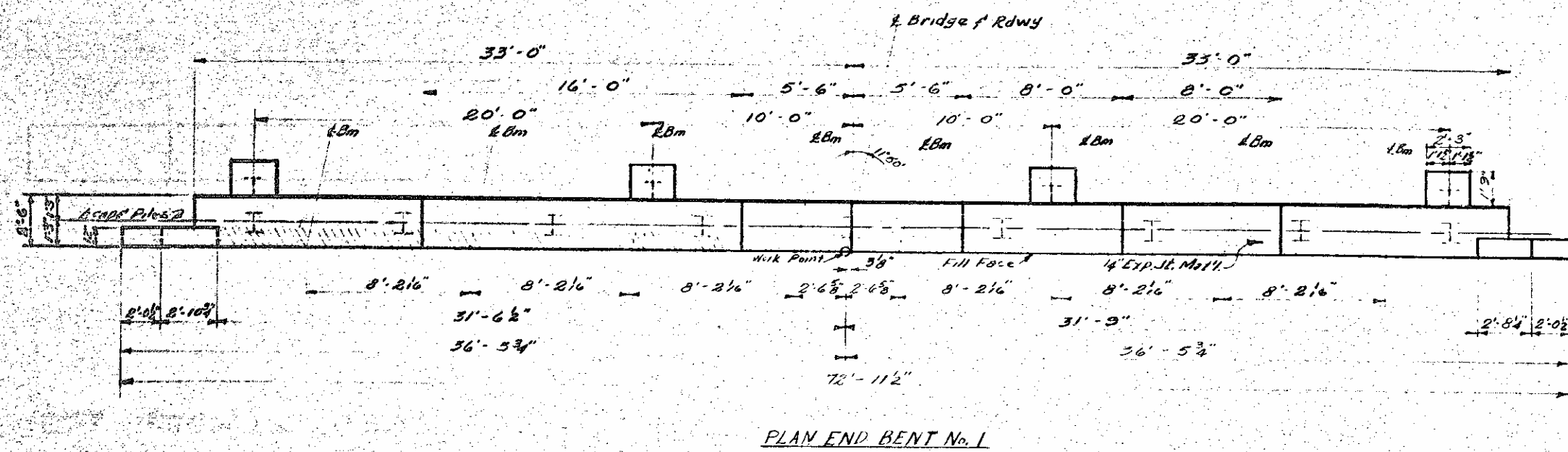
PROJECT NO. 8.19430  
 HAYWOOD COUNTY  
 STATION: 49+72.83-1-

STATE OF NORTH CAROLINA	
STATE HIGHWAY COMMISSION	
STRUCTURAL STEEL	
JUNE 1959	
DATE	6/23/59
BY	W.C.
CHECKED BY	W.C.
DATE	6/23/59

Not Revised to correct anchor bolt hole spacing in bearing plates RVD

DESIGNED BY	DATE
DRAWN BY	DATE
CHECKED BY	DATE
APPROVED BY	DATE





Note: Piles shall be driven to a minimum bearing capacity of 30 tons each. For typical steel pile splice detail, see End Bent sheet for Sta 57+75 L1.

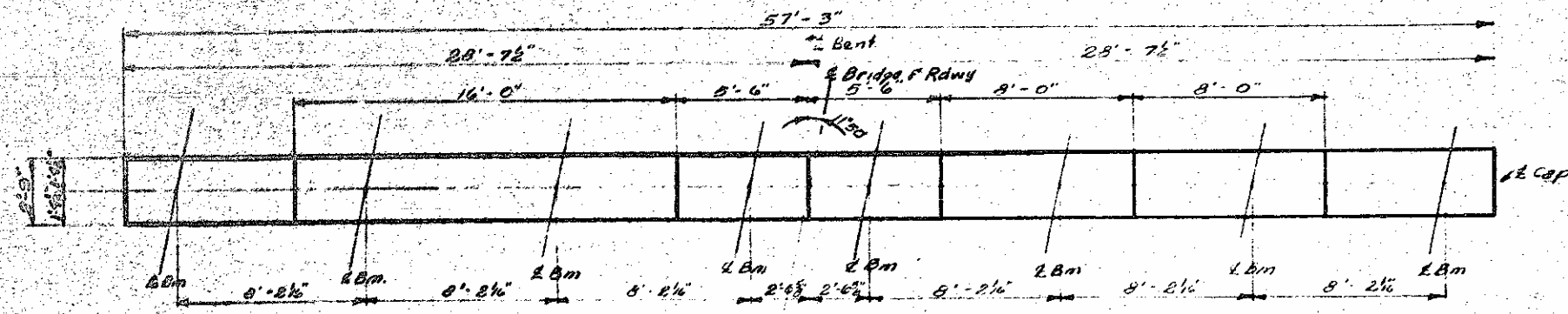
BILL OF MATERIALS				
FOR END BENT No. 1				
BAR	NO.	SIZE	TYPE	AMOUNT
b1	1	4/0	STR	20'-0"
b2	1	4/0	STR	20'-0"
b3	3	4/0	1	20'-0"
b4	3	4/0	1	20'-0"
b5	2	4/0	STR	20'-0"
b6	6	4/0	STR	20'-0"
b7	12	4/0	2	20'-0"
b8	2	4/0	STR	20'-0"
b9	17	4/0	STR	20'-0"
b10	12	4/0	STR	20'-0"
b11	8	4/0	STR	20'-0"
b12	80	4/0	3	20'-0"
b13	60	4/0	4	20'-0"
b14	4	4/0	5	20'-0"
b15	3	4/0	STR	20'-0"
b16	3	4/0	STR	20'-0"
b17	3	4/0	STR	20'-0"
b18	3	4/0	STR	20'-0"
v1	10	4/0	STR	7'-1"
v2	10	4/0	STR	6'-9"

Reinforcing Steel lbs. SAC  
Class W Conc. Cu Yrd. SAC  
12 BP53 Steel Pile  
No. 15 Lin. Ft. 200

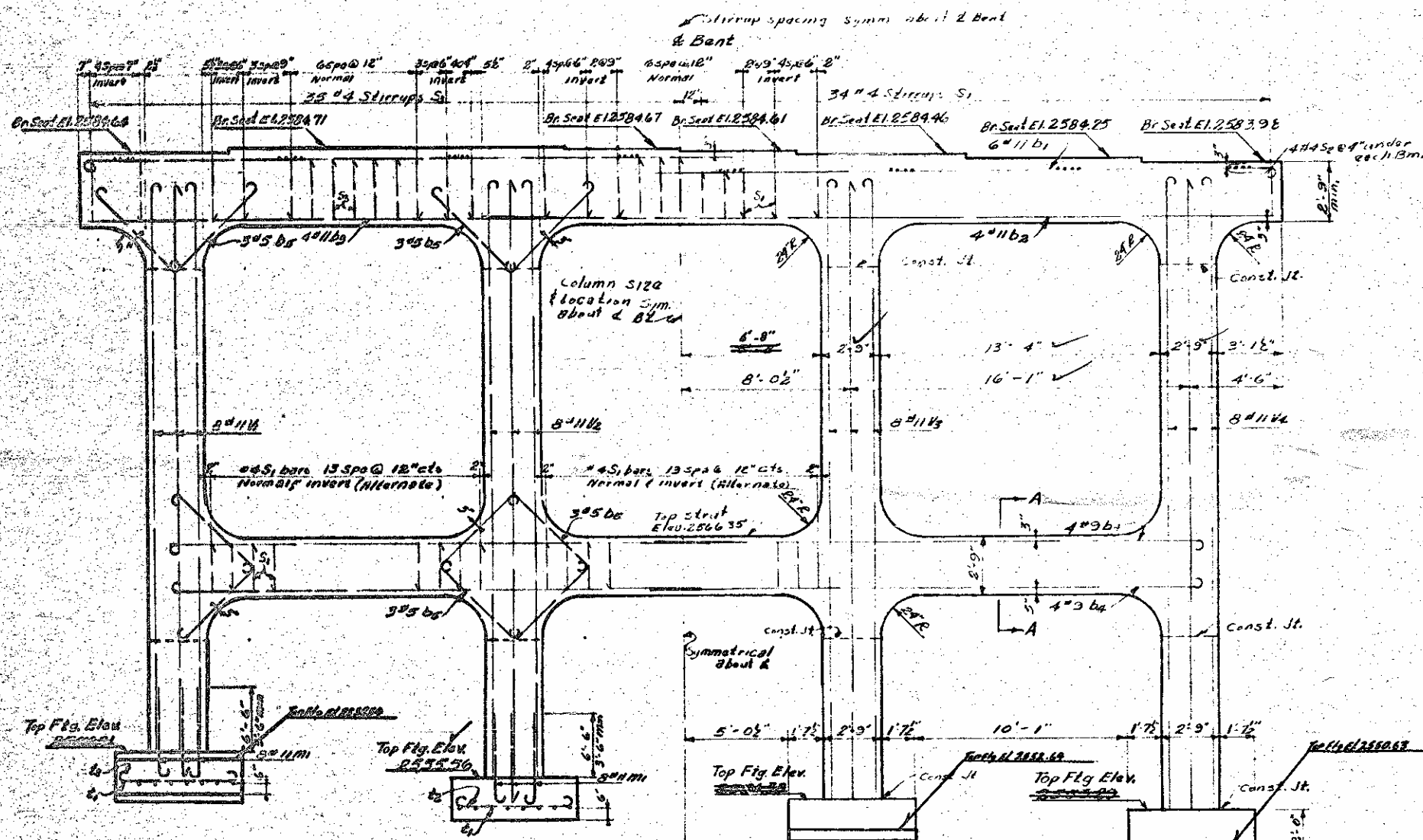
PROJECT NO. 8193D  
HAYWOOD COUNTY  
STATION: 49+72.83 - 4-

STATE OF NORTH CAROLINA  
STATE HIGHWAY COMMISSION  
SUBSTRUCTURE  
END BENT No. 1  
JUN 1953

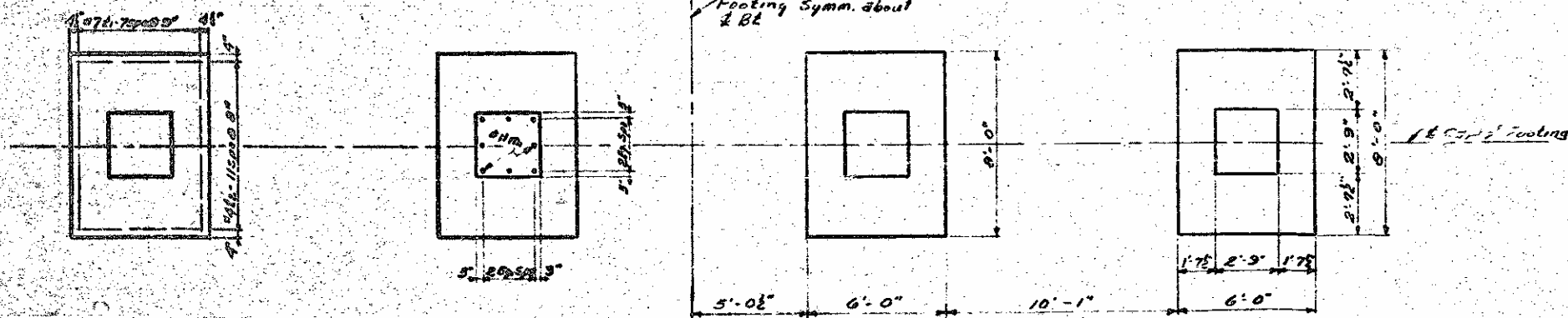
DESIGNED BY: DATE:  
DRAWN BY: DATE:  
CHECKED BY: DATE:  
APPROVED BY: DATE:



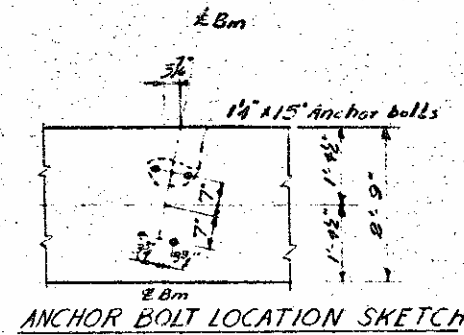
PLAN OF CAP



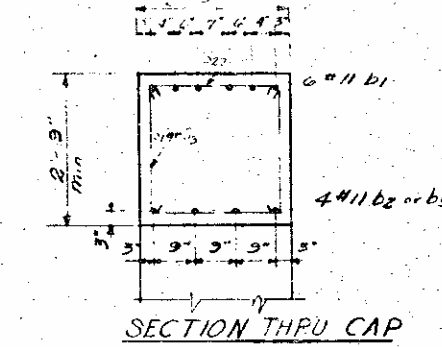
ELEVATION



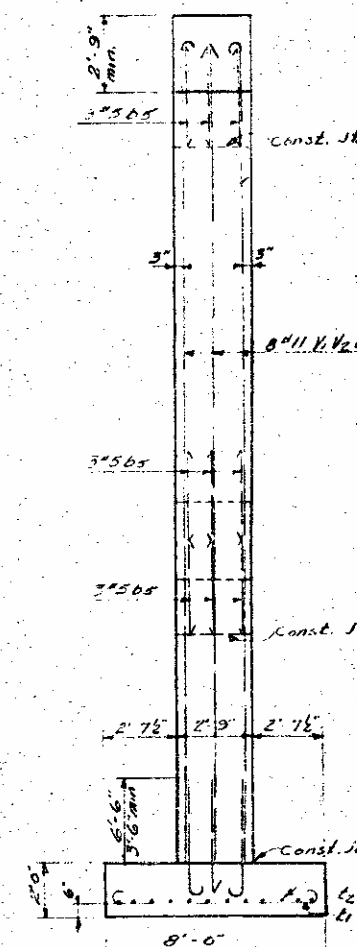
PLAN OF FOOTING



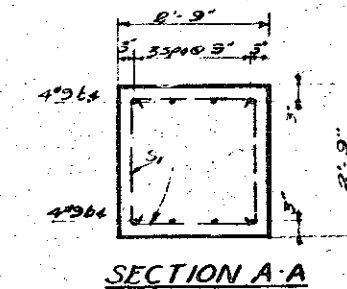
ANCHOR BOLT LOCATION SKETCH



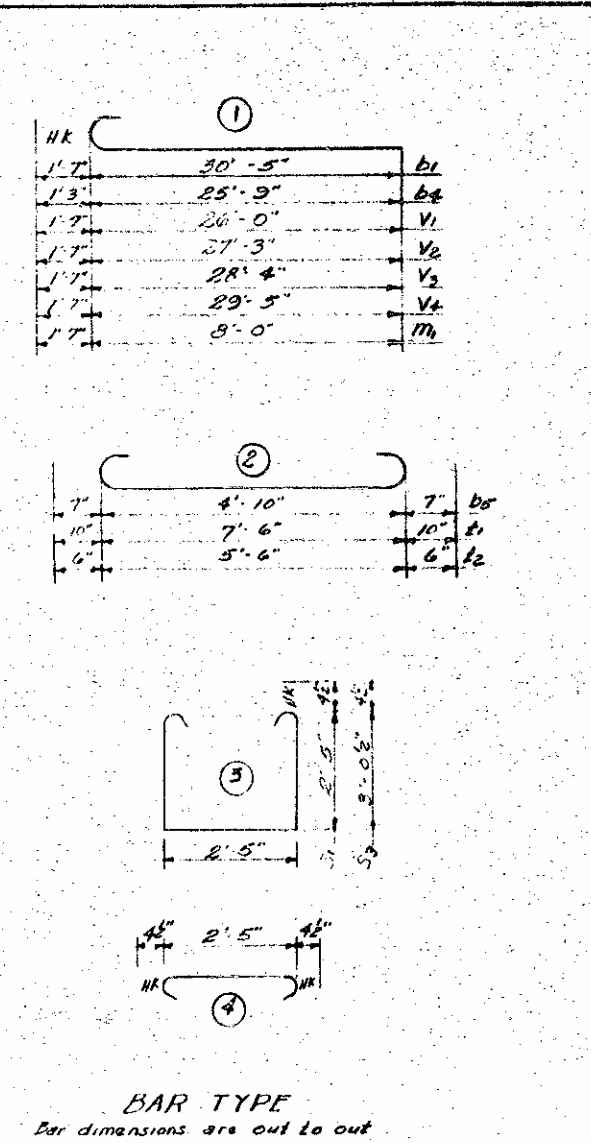
SECTION THRU CAP



END VIEW



SECTION A-A



NOTE: Minimum top of footing elev. 2'-0" below base of rail.  
Computed foundation load 3 1/2 tons per sq ft.

BILL OF MATERIALS				
FOR ONE BENT				
BAR	NO.	SIZE	TYPE	LENGTH
b1	12	#11	1	32'-0"
b2	4	#11	2	28'-0"
b3	4	#11	2	28'-0"
b4	16	#9	1	28'-0"
b5	60	#5	2	6'-0"
v1	8	#11	1	27'-7"
v2	8	#11	1	25'-0"
v3	8	#11	1	25'-0"
v4	8	#11	1	31'-0"
m	32	#11	1	9'-7"
t1	32	#7	2	9'-8"
t2	48	#4	2	6'-0"
s1	76	#8	3	8'-0"
s2	32	#8	4	3'-8"
s3	35	#9	3	2'-3"

Reinforcing Steel lbs. 15,500  
Class II Concrete Cuyds. 100  
Unclassified Structure Exc. Cuyds. 100

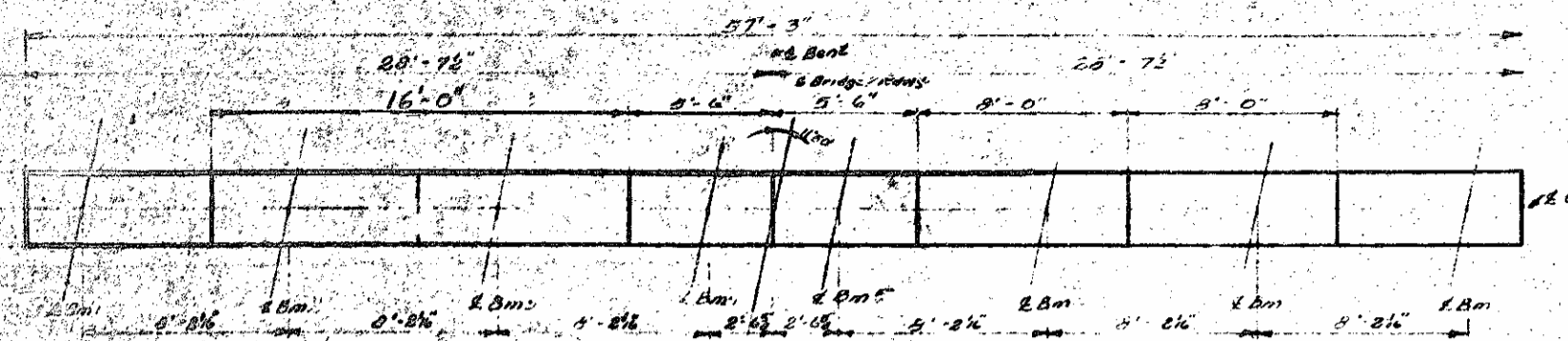
PROJECT NO. 619430  
HAYWOOD COUNTY  
STATION: 49+72.83

STATE OF NORTH CAROLINA  
STATE HIGHWAY COMMISSION  
BALANCE  
SUBSTRUCTURE  
BENT NO. 1

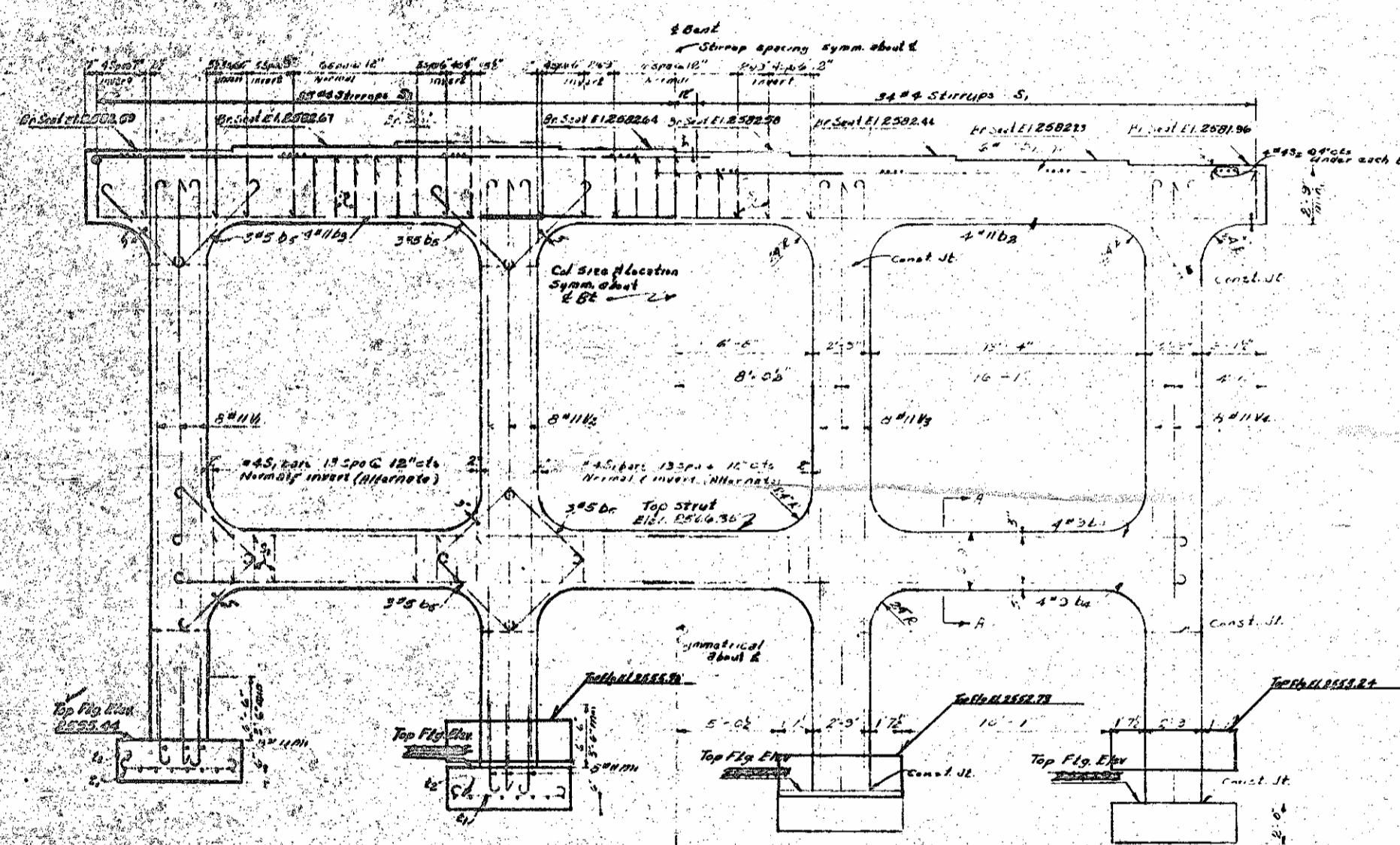
June 1959

DESIGNED BY: J. B. ...  
CHECKED BY: ...  
DATE: NOV. 1959

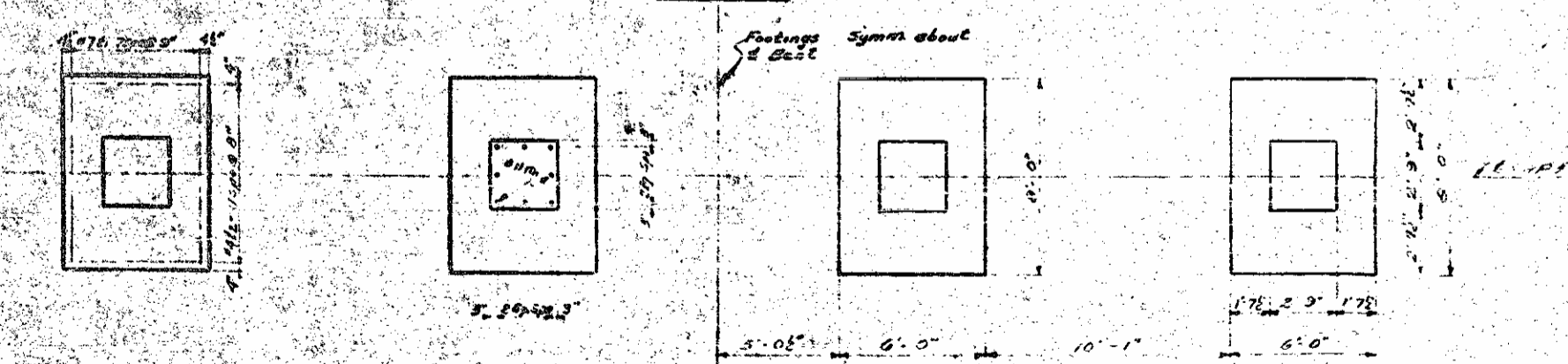




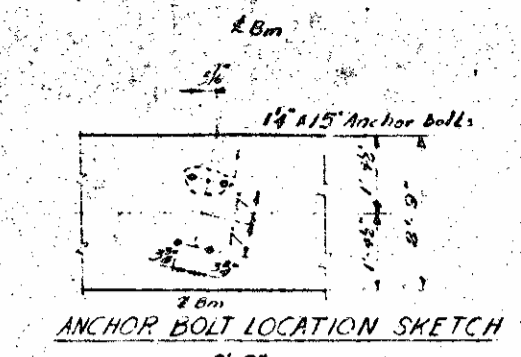
PLAN OF CAP



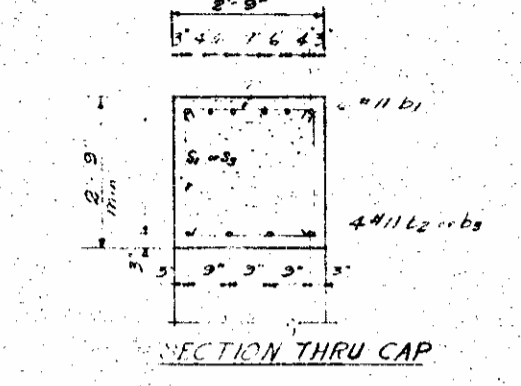
ELEVATION



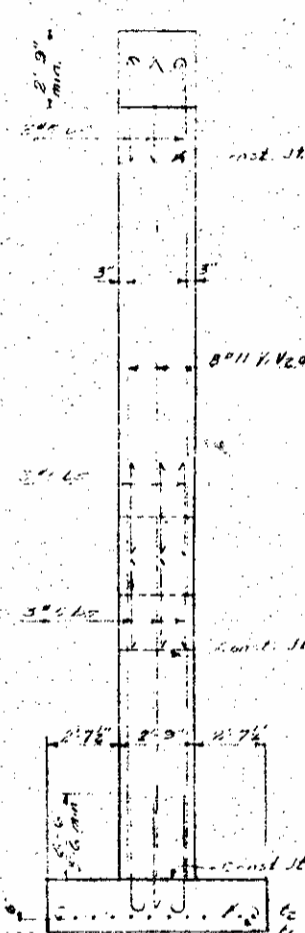
PLAN OF FOOTING



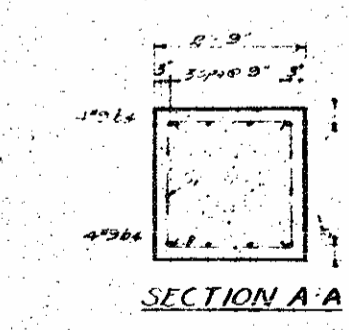
ANCHOR BOLT LOCATION SKETCH



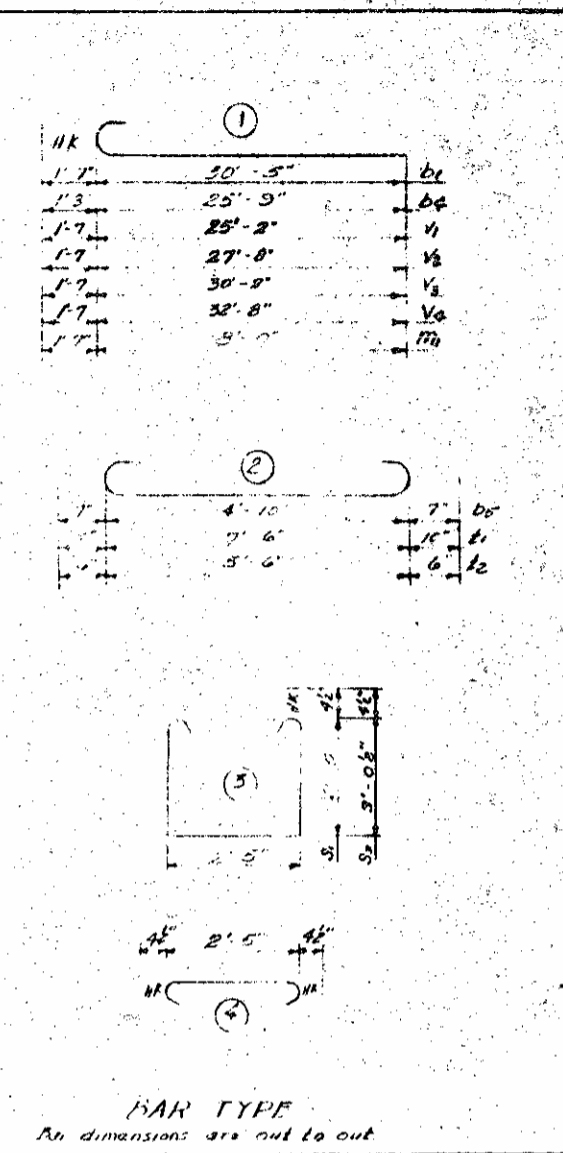
SECTION THRU CAP



END VIEW



SECTION A-A



BAR TYPE  
All dimensions are out to out

NOTE: Minimum top of footing elev. 2'-0" below base of rail.  
Computed foundation load 3 1/2 tons per sq. ft.

BILL OF MATERIALS			
BAR NO.	QTY.	SIZE	REMARKS
1	12	#11	Top bars
2	12	#11	Bottom bars
3	12	#11	Vertical bars
4	12	#11	Vertical bars
5	12	#11	Vertical bars
6	12	#11	Vertical bars
7	12	#11	Vertical bars
8	12	#11	Vertical bars
9	12	#11	Vertical bars
10	12	#11	Vertical bars
11	12	#11	Vertical bars
12	12	#11	Vertical bars
13	12	#11	Vertical bars
14	12	#11	Vertical bars
15	12	#11	Vertical bars
16	12	#11	Vertical bars
17	12	#11	Vertical bars
18	12	#11	Vertical bars
19	12	#11	Vertical bars
20	12	#11	Vertical bars
21	12	#11	Vertical bars
22	12	#11	Vertical bars
23	12	#11	Vertical bars
24	12	#11	Vertical bars
25	12	#11	Vertical bars
26	12	#11	Vertical bars
27	12	#11	Vertical bars
28	12	#11	Vertical bars
29	12	#11	Vertical bars
30	12	#11	Vertical bars
31	12	#11	Vertical bars
32	12	#11	Vertical bars
33	12	#11	Vertical bars
34	12	#11	Vertical bars
35	12	#11	Vertical bars
36	12	#11	Vertical bars
37	12	#11	Vertical bars
38	12	#11	Vertical bars
39	12	#11	Vertical bars
40	12	#11	Vertical bars
41	12	#11	Vertical bars
42	12	#11	Vertical bars
43	12	#11	Vertical bars
44	12	#11	Vertical bars
45	12	#11	Vertical bars
46	12	#11	Vertical bars
47	12	#11	Vertical bars
48	12	#11	Vertical bars
49	12	#11	Vertical bars
50	12	#11	Vertical bars
51	12	#11	Vertical bars
52	12	#11	Vertical bars
53	12	#11	Vertical bars
54	12	#11	Vertical bars
55	12	#11	Vertical bars
56	12	#11	Vertical bars
57	12	#11	Vertical bars
58	12	#11	Vertical bars
59	12	#11	Vertical bars
60	12	#11	Vertical bars
61	12	#11	Vertical bars
62	12	#11	Vertical bars
63	12	#11	Vertical bars
64	12	#11	Vertical bars
65	12	#11	Vertical bars
66	12	#11	Vertical bars
67	12	#11	Vertical bars
68	12	#11	Vertical bars
69	12	#11	Vertical bars
70	12	#11	Vertical bars
71	12	#11	Vertical bars
72	12	#11	Vertical bars
73	12	#11	Vertical bars
74	12	#11	Vertical bars
75	12	#11	Vertical bars
76	12	#11	Vertical bars
77	12	#11	Vertical bars
78	12	#11	Vertical bars
79	12	#11	Vertical bars
80	12	#11	Vertical bars
81	12	#11	Vertical bars
82	12	#11	Vertical bars
83	12	#11	Vertical bars
84	12	#11	Vertical bars
85	12	#11	Vertical bars
86	12	#11	Vertical bars
87	12	#11	Vertical bars
88	12	#11	Vertical bars
89	12	#11	Vertical bars
90	12	#11	Vertical bars
91	12	#11	Vertical bars
92	12	#11	Vertical bars
93	12	#11	Vertical bars
94	12	#11	Vertical bars
95	12	#11	Vertical bars
96	12	#11	Vertical bars
97	12	#11	Vertical bars
98	12	#11	Vertical bars
99	12	#11	Vertical bars
100	12	#11	Vertical bars

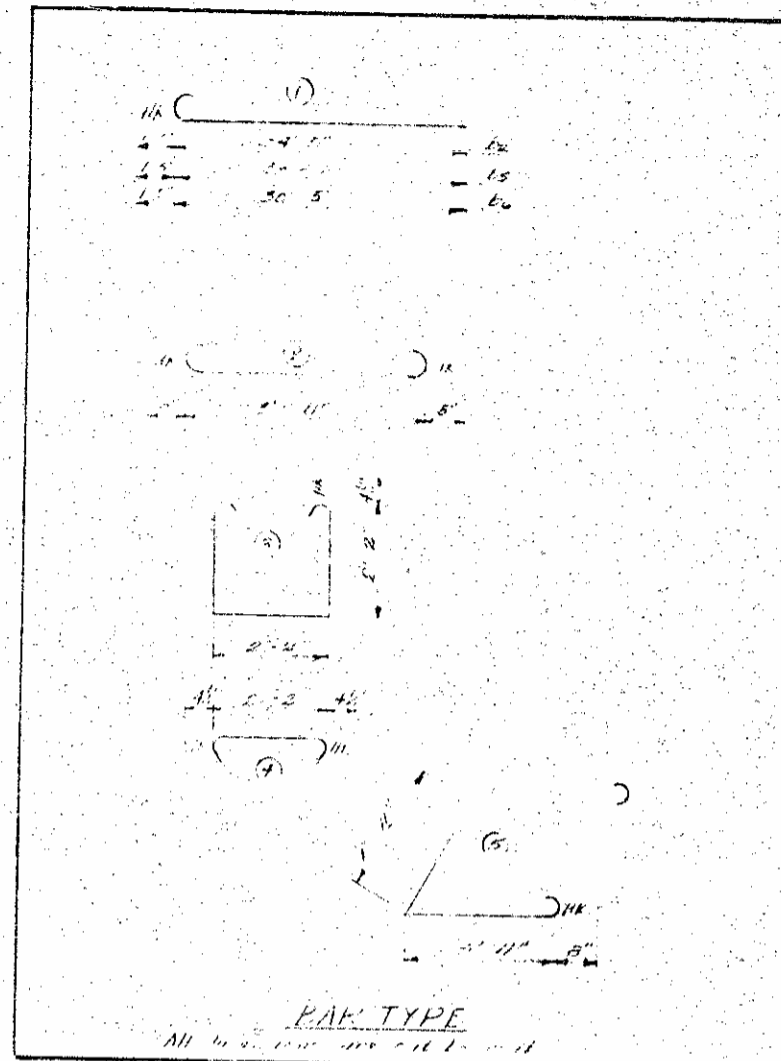
PROJECT NO. 619450  
HAYWOOD COUNTY  
STATION: 13+72.53

STATE OF NORTH CAROLINA  
STATE HIGHWAY COMMISSION  
SUBSTRUCTURE  
BENT NO. 2  
June 1959

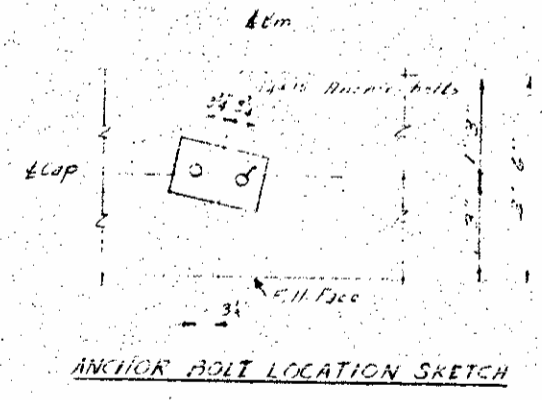
DESIGNED BY: J. B. Parker  
CHECKED BY: R. W. H. Hays  
DATE: MAY 12, 1959  
DWN: NOV. 1959

BILL OF MATERIALS				
FOR END BENT No. 2				
BAR	NO.	SIZE	TYPE	AMOUNT
B1	2	4/8	STR	1.00
B2	6	1/2	STR	1.00
B3	1	1/2	STR	42.00
B4	1	1/2	STR	25.00
B5	3	1/2	STR	10.00
B6	3	1/2	STR	10.00
B7	12	1/2	STR	5.00
B8	2	1/2	STR	37.00
B9	12	1/2	STR	12.00
B10	2	1/2	STR	37.00
B11	17	1/2	STR	2.00
S1	60	1/2	STR	2.00
S2	60	1/2	STR	1.00
S3	4	1/2	STR	1.00
V1	5	1/2	STR	4.00
V2	5	1/2	STR	1.00
V3	5	1/2	STR	1.00
V4	5	1/2	STR	1.00
V5	10	1/2	STR	6.00
V6	10	1/2	STR	6.00

Reinforcing Steel lbs.  
 Class A Concrete Cu Yds. 21.7  
 12 BP53 Steel Piles  
 No. 12 Lin. ft. 100.00



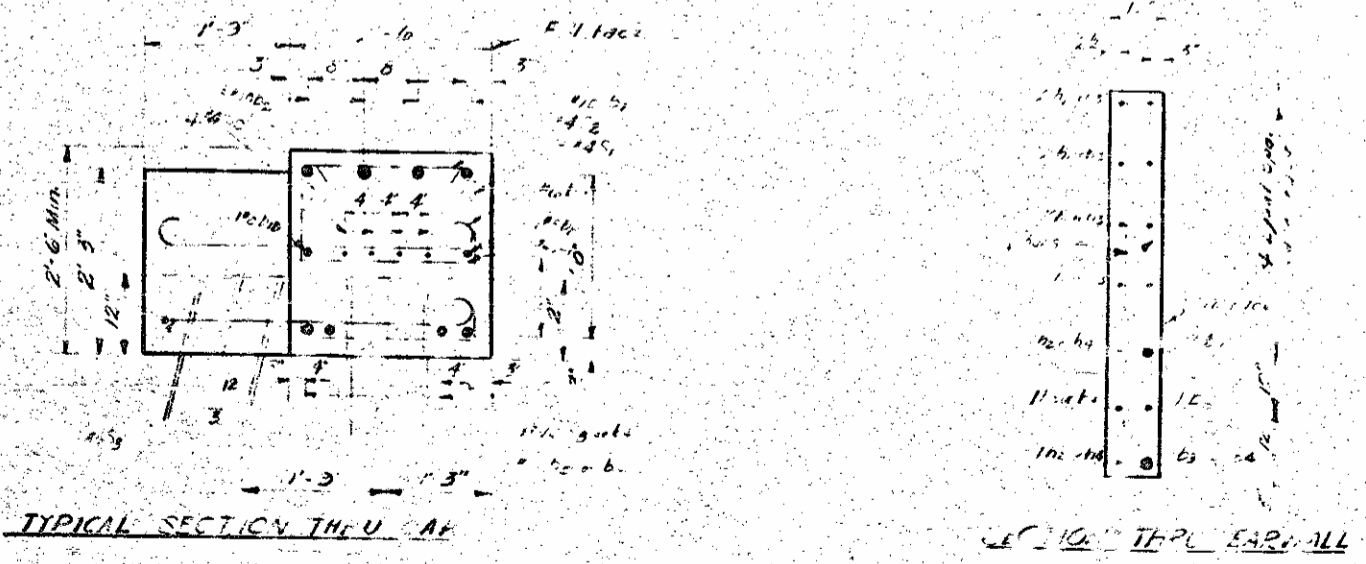
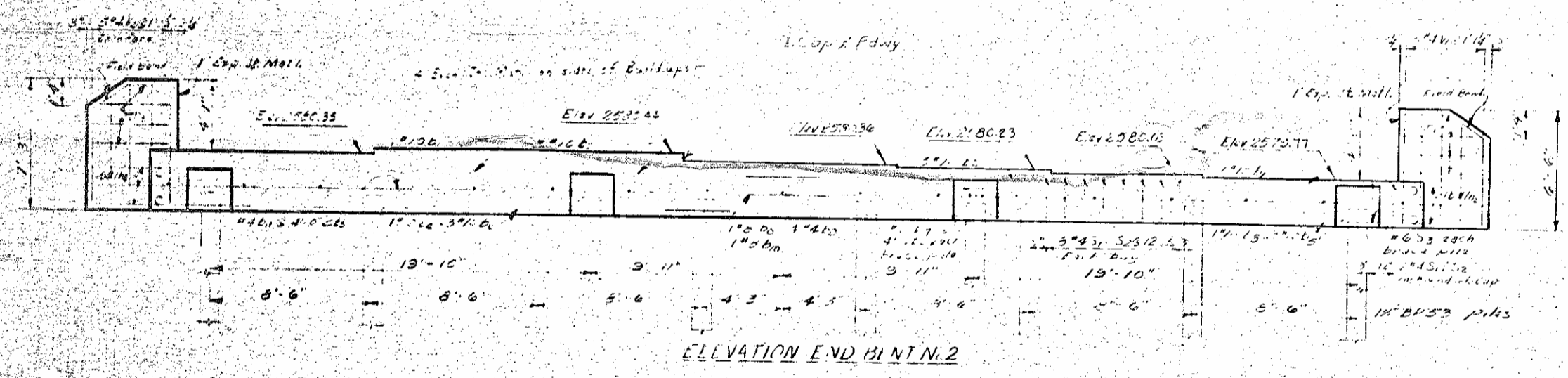
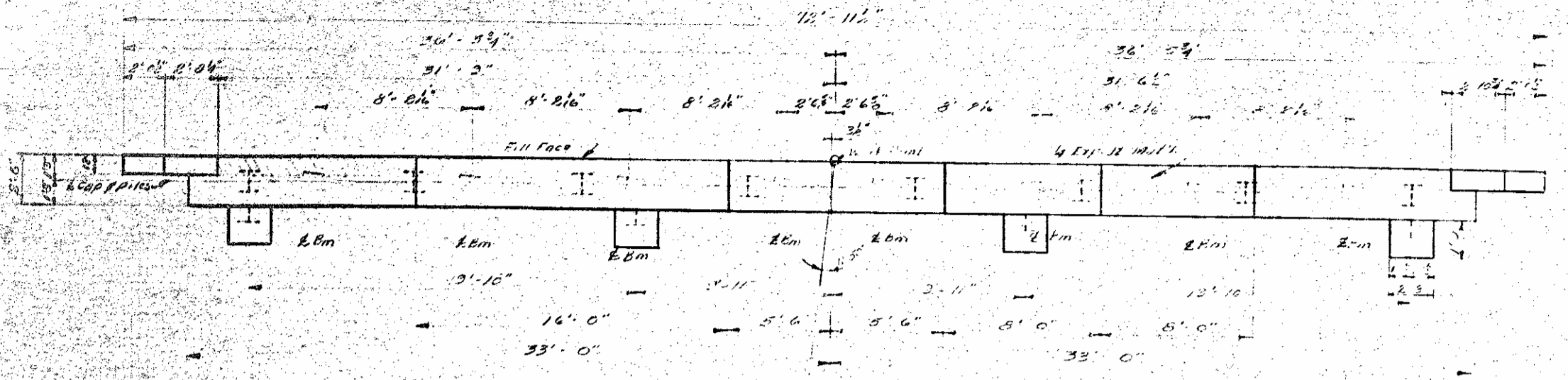
NOTE: Piles shall be driven to a minimum bearing capacity of 30 tons each.



PROJECT NO. 819430  
 HAYWOOD COUNTY  
 STATION: 49+72.83-4

STATE OF NORTH CAROLINA  
 STATE HIGHWAY COMMISSION  
 SUBSTRUCTURE  
 END BENT No. 2  
 JUNE 1959

REVISED	DATE	BY



DESIGNED BY: J. P. Ege  
 CHECKED BY: J. P. Ege  
 DATE: MAR 11 1959  
 DATE: MAR 11 1959

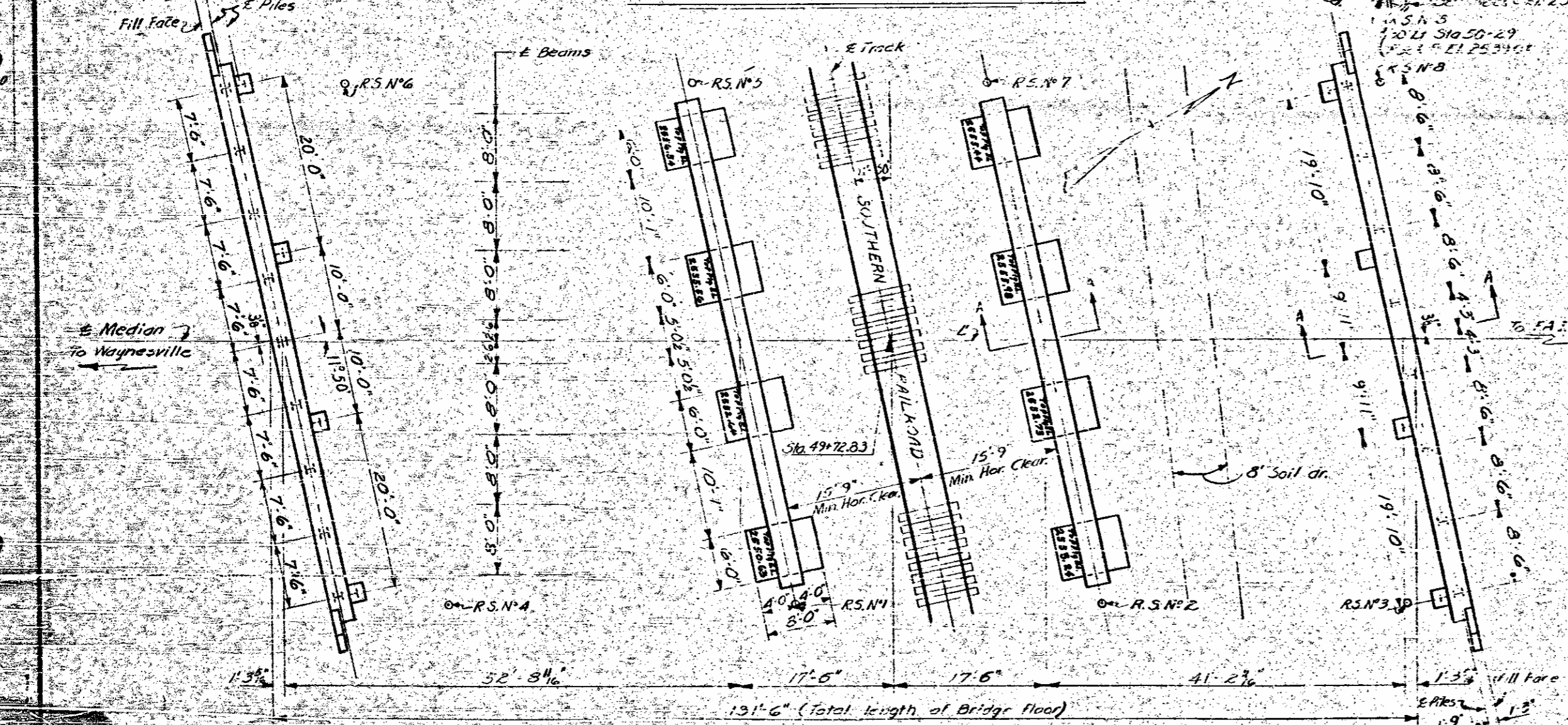
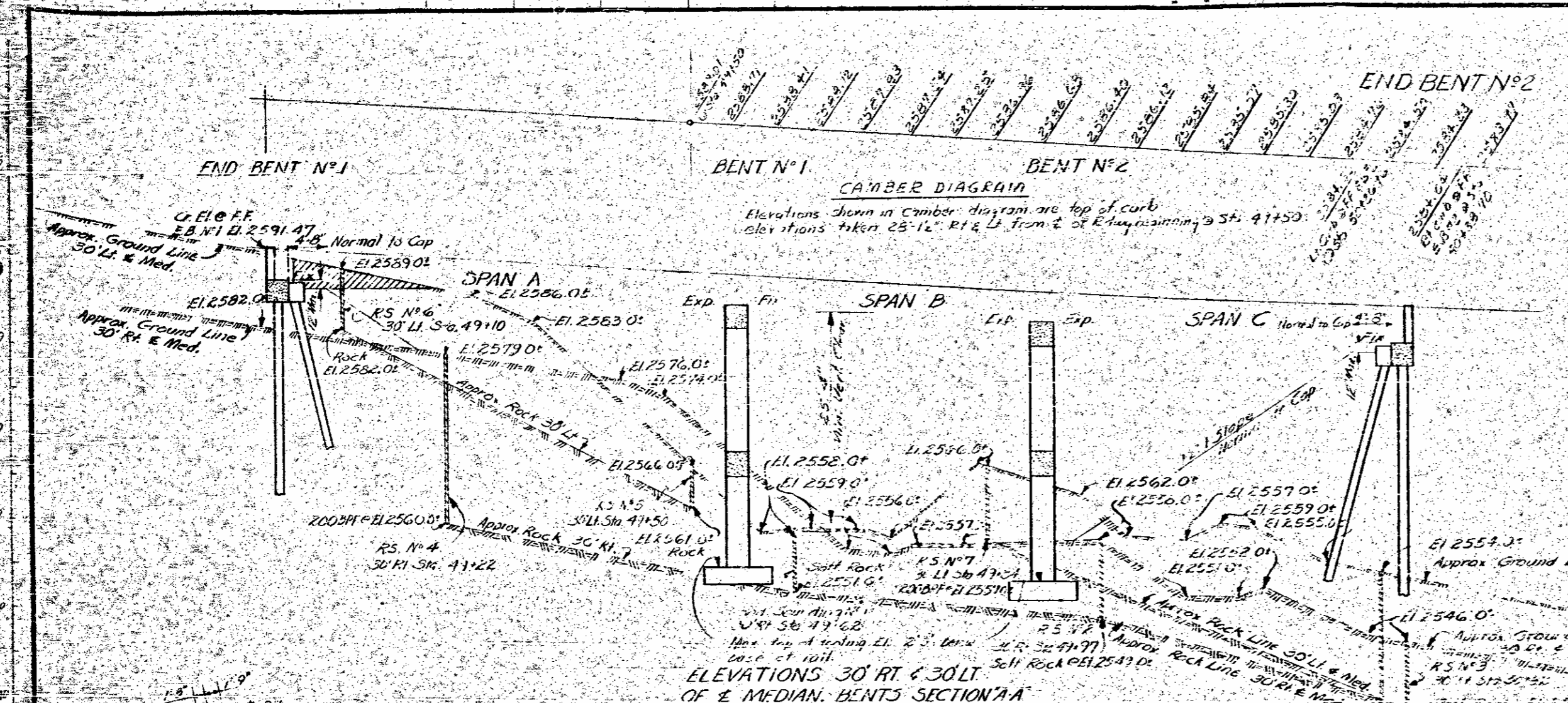


PROJ. NO.	8.19430
DATE	JULY 1959
BY	E. C. SMART
CHECKED BY	W. H. HARRIS

**GENERAL NOTES**

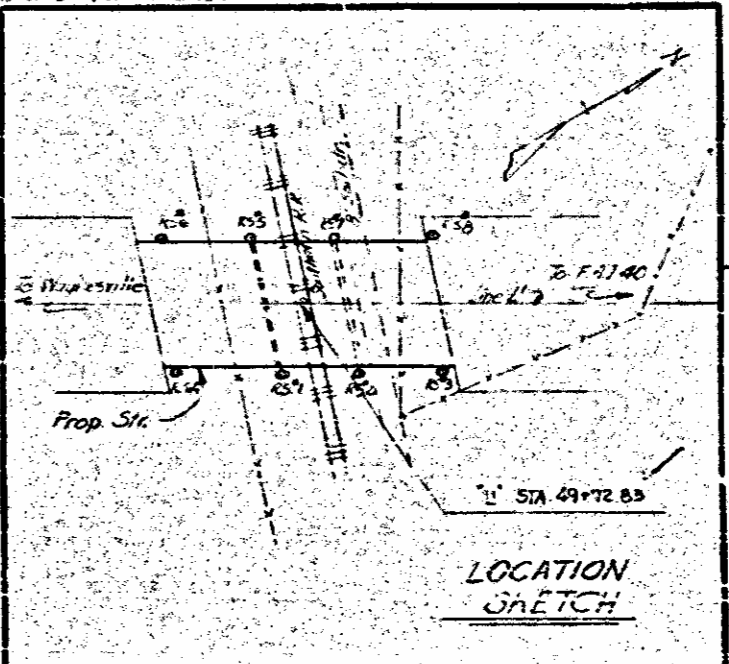
Assumed Live Load  $S_L(44)$  or appropriate loading.  
 For other design data and general notes see sheet 5-N.  
 Computed foundation load for Bents No. 1 & 2 equals 3 tons per sq ft.  
 Footings shall be carried at least 6" into rock with minimum thickness as shown on plans.  
 Piles for End Bents No. 1 & 2 shall be driven to a minimum bearing capacity of 20 tons/sq ft.  
 Piles for End Bents No. 1 & 2 shall be driven through the roadway fill.

No test piles are required. Order shall be placed for a distance of 40ft to the left of P.O. & roadway as directed by the Engineer. This work to be measured and paid for as Unclassified Excavation for Structures.  
 Railway traffic to be maintained at all times. See Special Prov.



**TOTAL BILL OF MATERIAL**

	Class A Concrete Cu Yds	Reinforcing Steel Lbs.	Structural Steel Approx. Lbs.	1/2" 21" 53 Steel Piles No. Lin Ft.	Unclassified Excavation (Cu Yds)	Unclassified Structure (Cu Yds)
Superstructure Spans A, B, C	2453	59,488	162,300			
End Bent No. 1	218	3858		13	230	281
Bent No. 2	2176	13,290			207	247
End Bent No. 2	2738	13,488		12	1000	1140
Approach Piers	52	76				
<b>TOTALS</b>	<b>7487</b>	<b>94,000</b>	<b>162,300</b>	<b>25</b>	<b>2530</b>	<b>281</b>



**PROJECT NO. 8.19430**  
**HAYWOOD COUNTY**  
**STATION: 49+72.85**

STATE OF NORTH CAROLINA  
**STATE HIGHWAY COMMISSION**  
 GENERAL DRAWING  
 OF BRIDGE OVER SOUTHERN R.R.  
 ON CONN. TO FAI. 40 BETWEEN  
 WAYNESVILLE & FAI. 40  
 JULY, 1959

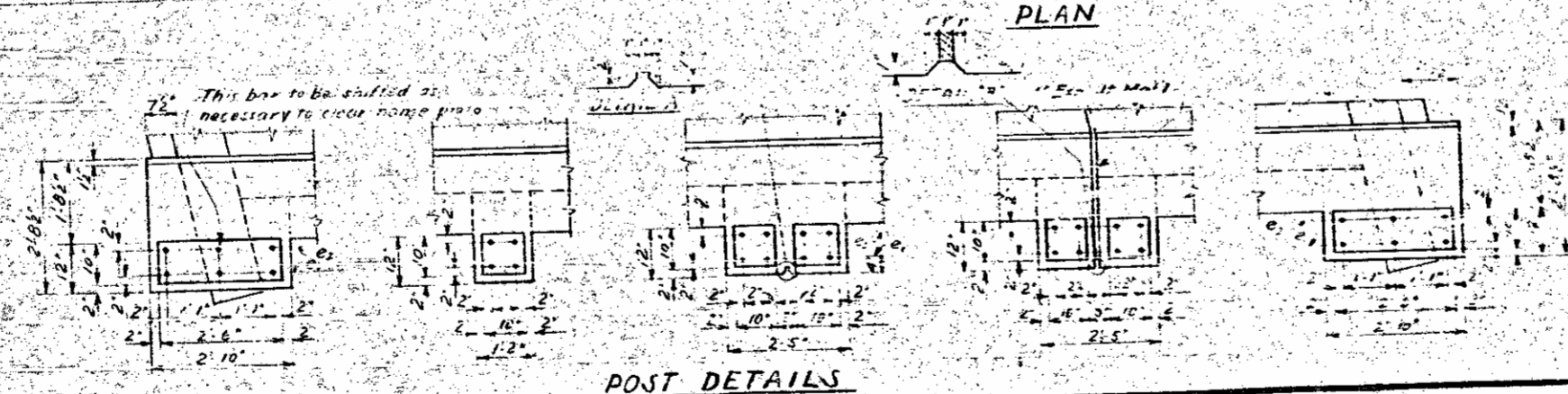
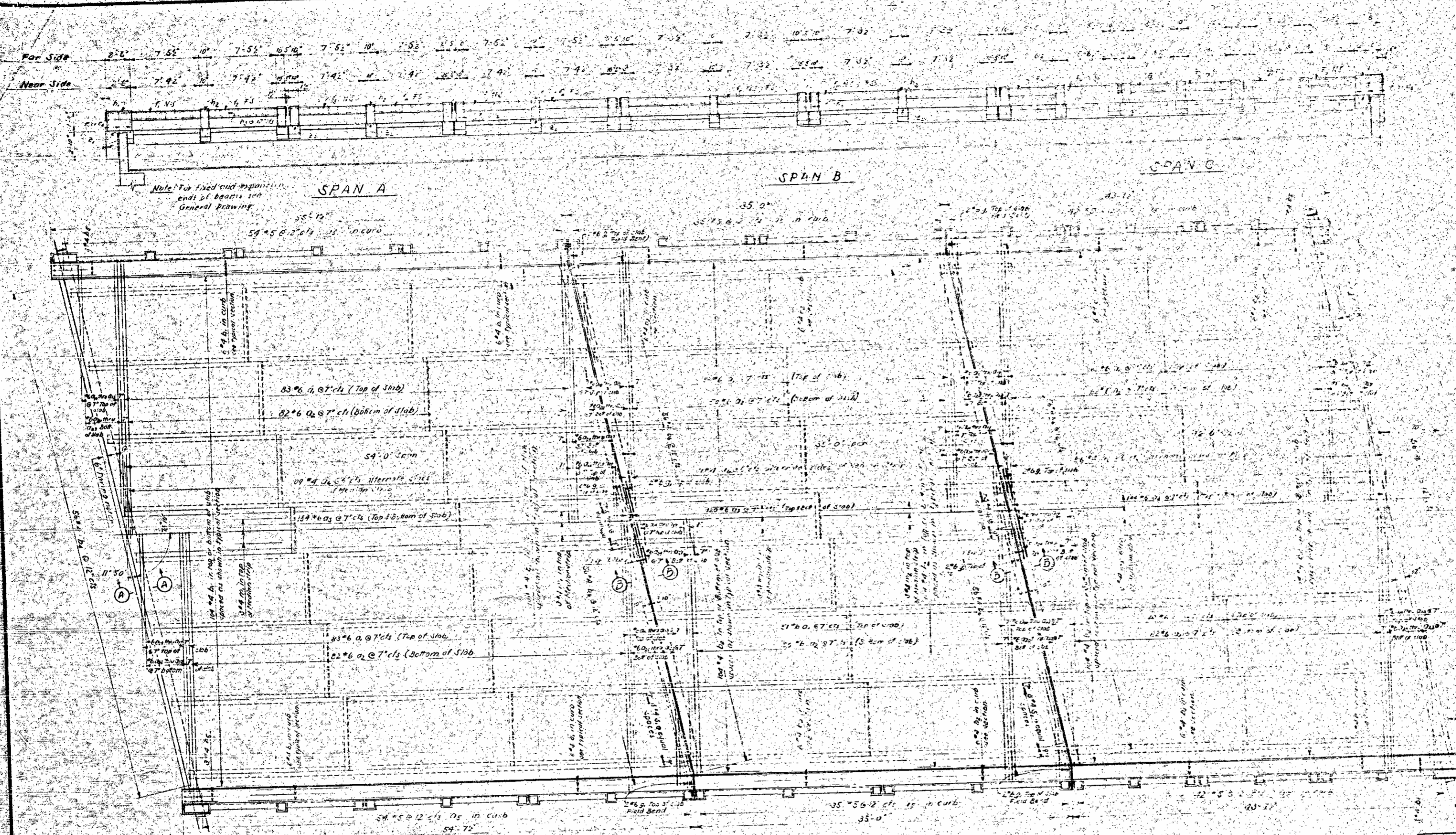
DESIGNED BY **ERIC C. SMART** DATE **JULY 1959**  
 CHECKED BY **W. H. HARRIS** DATE **MAY 1960**

57  
 533  
 167



NO. ROAD DIST. NO.	STATE	PROJECT NO.
3	N.C.	819430
- R Proj. 1-16(12)		

Note: For Design Data, see "General Notes" on Sheet 3-N



**PROJECT NO. 819430**  
**HAYWOOD COUNTY**  
**STATION: 49+72.83-E**  
**SHEET NO. 1 OF 2**

STATE OF NORTH CAROLINA  
**STATE HIGHWAY COMMISSION**  
 SUPERSTRUCTURE  
 SPANS A, B & C  
 MAY 1959

DESIGNED BY: [Signature] DATE: May 1959  
 DRAWN BY: [Signature] DATE: [Blank]  
 CHECKED BY: [Signature] DATE: Oct. 1959

SPECIAL

58  
 53  
 161



