

Location and Surveys

LOCATION AND SURVEYS, DIVISION 14
122 BONNIE LANE
SYLVA, NC 28779

PROJECT SURVEYOR



DOCUMENT NOT CONSIDERED FINAL
UNLESS ALL SIGNATURES COMPLETED

I, Brian Barwatt, certify that the right of way and permanent easement monumentation for this project shown herein was completed under my direct and responsible charge from an actual survey made under my supervision; that all horizontal closures had a minimum ratio of precision of 1:10,000 (Class A). Field work was performed during December, 2023 and all coordinates are based on NAD83/2011; That this survey was performed to meet the requirements of 21NCAC 56.1600 as applicable.

This 18th day of June, 2024.

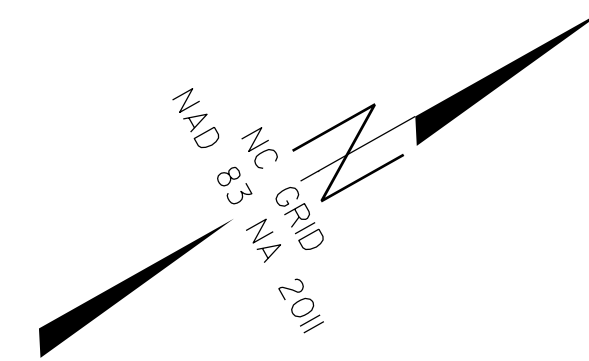
Designed by:
Brian Barwatt
Professional Land Surveyor L-4727

DONALD CARROLL HOOPER
DB 262 PG 81

BERNICE D. HAYNES
DB 201E PG 299

-Y4- CURVE DATA

PI Sta	15+39.17
Δ	= 3° 24' 07.7" (LT)
D	= 2° 30' 07.2"
L	= 135.98'
T	= 68.01'
R	= 2,290.00'
SE	= NC



-Y4- PC Sta. 14+71.16
-Y4- PT Sta. 16+07.13

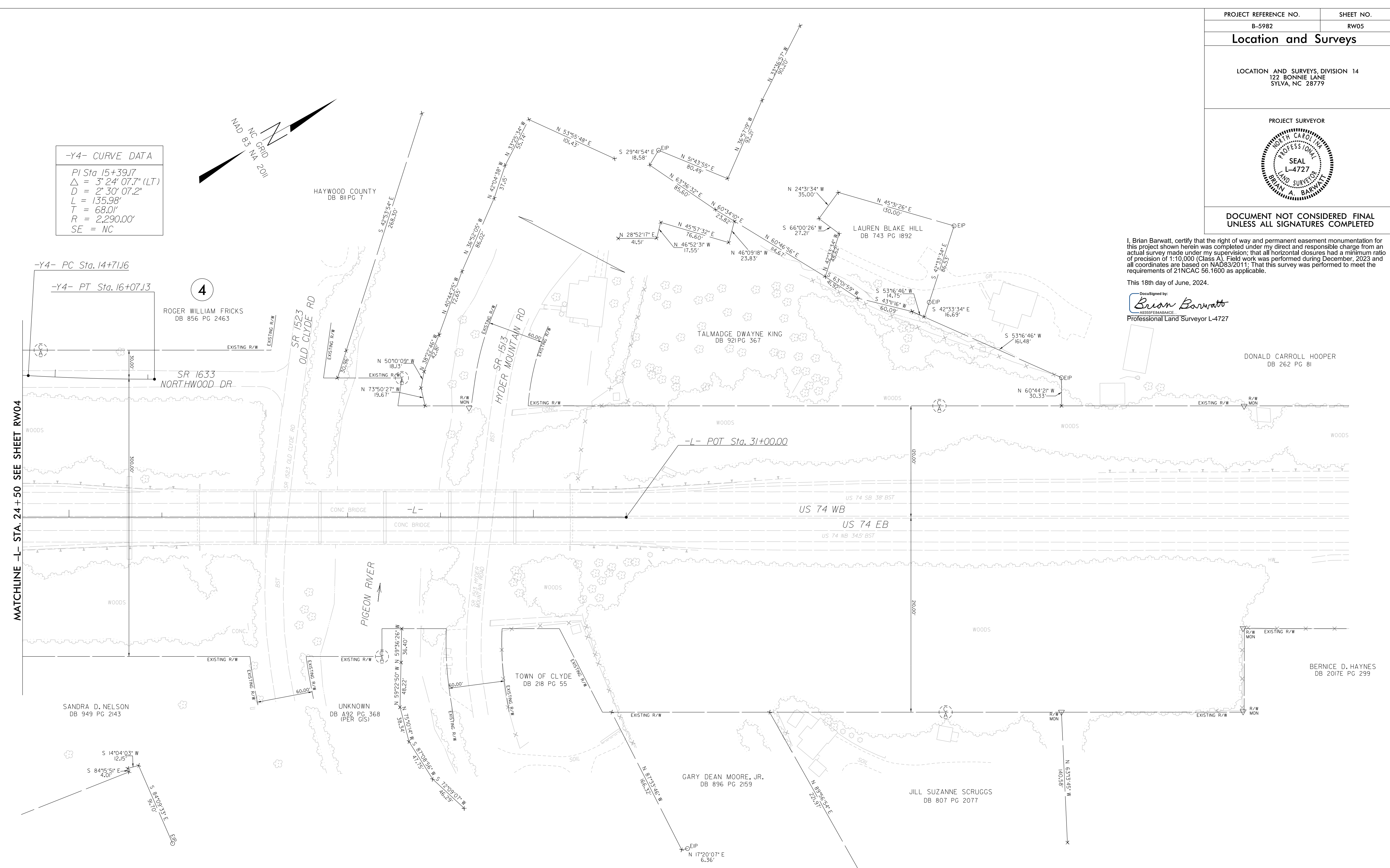
4

ROGER WILLIAM FRICKS
DB 856 PG 2463

MATCHLINE -L- STA. 24+50 SEE SHEET RW04

REVISIONS

18 JUN 2024 10:49
D:\S\1\2024\10649\15982\RW_Sheets\5982-1s-rw05.dgn
B:\barwatt



NOTES:

1. IF FURTHER INFORMATION REGARDING PROJECT CONTROL IS NEEDED PLEASE CONTACT THE LOCATION AND SURVEYS UNIT.
2. PROJECT CONTROL WAS ESTABLISHED USING GNSS, THE GLOBAL NAVIGATION SATELLITE SYSTEM.
3. RIGHT OF WAY MONUMENTATION ESTABLISHED DURING DECEMBER, 2023.